

## Trigger-sensitive snowdrifts. - moderate avalanche danger

	<p>2000 m Verwall, Silvretta, Rätikon Ost, Rätikon West, Lechquellengebirge, Lechtaler Alpen, Allgäuer Alpen, Bregenzerwaldgebirge</p>	
	<p>2000 m Voralpenbereich</p>	

### Avalanche problems



### Danger ratings



### Expositions

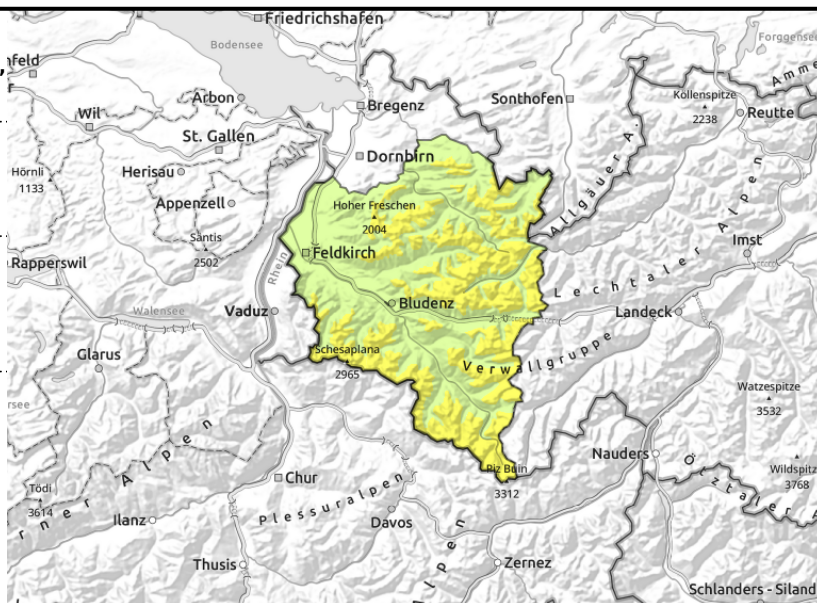


**Verwall, Silvretta, Rätikon Ost, Rätikon West, Lechquellengebirge, Lechtaler Alpen, Allgäuer Alpen, Bregenzerwaldgebirge**



in ridgeline terrain, gullies, bowls, behind abrupt discontinuities in the terrain

isolated, shady slopes at high and high-alpine altitudes



## Assess fresh snowdrift accumulations carefully, weak old snow above 2200m

Fresh and older snowdrift accumulations are still trigger-sensitive on steep shady slopes, can in isolated cases be triggered by one sole skier. Danger zones occur esp. on shady steep ridgeline slopes, in gullies and bowls and behind abrupt discontinuities in the terrain above 2200m. Frequency of danger zones increases with ascending altitude. Especially in extremely steep terrain, loose-snow avalanche can trigger naturally due to warmth and solar radiation. Weak layer in the old snowpack can be triggered by large additional loading in isolated cases. Danger zones for these lie on steep W/N/E facing slopes above 2400 m and in transitions from shallow to deep snow. At intermediate and high altitudes on smooth, steep slopes, isolated glide-snow avalanches are still possible.

### Snowpack structure

The fresh snow which fell on the weekend has consolidated out to warmth and solar radiation, bonding of fresh snow and drifts to the old snowpack is still prone to triggering in places. On shady slopes at high altitudes there is still powder, on south-facing slopes the solar radiation has made great impact. At mid-level inside the snowpack between 2200 and 2600 m there are faceted layers, most likely in transitions from shallow to deep snow, which can be triggered. These danger zones are not visible to the naked eye.

### Weather

Nocturnal hours: a bit of cloud to cloudless, high fog could form over the valleys. -10 to -3 degrees. Wednesday: quite sunny, clouds will move in later on, milder. At 2000 m: -4 to +1 degree. Light to moderate easterly winds.

### Outlook

On Thursday, both sunshine and clouds, temperatures rising. Danger of loose-snow avalanches will recede slowly. The snowdrift accumulations on shady slopes are often poorly bonded with the old snowpack.

#### Avalanche problems

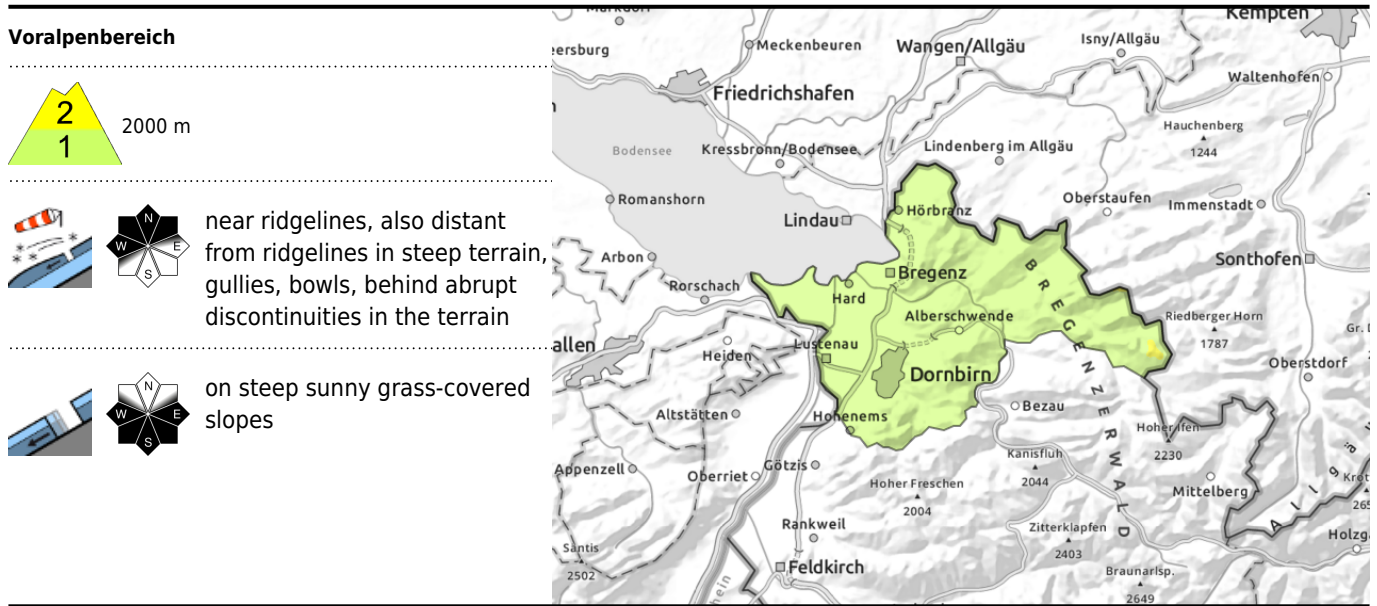


#### Danger ratings



#### Expositions





## Assess fresh snowdrift accumulations carefully

Fresh and older snowdrift accumulations are still trigger-sensitive on steep shady slopes, can in isolated cases be triggered by one sole skier. Danger zones occur esp. on shady steep ridgeline slopes, in gullies and bowls and behind abrupt discontinuities in the terrain above 2200m. Frequency of danger zones increases with ascending altitude. Especially in extremely steep terrain, loose-snow avalanche can trigger naturally due to warmth and solar radiation. Weak layer in the old snowpack can be triggered by large additional loading in isolated cases. Danger zones for these lie on steep W/N/E facing slopes above 2400 m and in transitions from shallow to deep snow. At intermediate and high altitudes on smooth, steep slopes, isolated glide-snow avalanches are still possible.

## Snowpack structure

The fresh snow which fell on the weekend has consolidated due to warmth and solar radiation, bonding of fresh snow and drifts to the old snowpack is still prone to triggering in places. On shady slopes at high altitudes there is still powder, on south-facing slopes the solar radiation has made great impact. At mid-level inside the snowpack between 2200 and 2600 m there are faceted layers, most likely in transitions from shallow to deep snow, which can be triggered. These danger zones are not visible to the naked eye.

## Weather

Nocturnal hours: a bit of cloud to cloudless, high fog could form over the valleys. -10 to -3 degrees.  
 Wednesday: quite sunny, clouds will move in later on, milder. At 2000 m: -4 to +1 degree. Light to moderate easterly winds.

## Outlook

On Thursday, both sunshine and clouds, temperatures rising. Danger of loose-snow avalanches will recede slowly. The snowdrift accumulations on shady slopes are often poorly bonded with the old snowpack.

Translated by Jeffrey McCabe, [www.creativtrans.com](http://www.creativtrans.com)

### Avalanche problems



### Danger ratings



### Expositions

