

## Mostly favourable conditions continue

	<p>2400 m Lechquellengebirge, Lechtaler Alpen, Verwall, Rätikon West, Rätikon Ost, Silvretta</p>	
	<p>Allgäuer Alpen, Bregenzerwaldgebirge</p>	
	<p>Voralpenbereich</p>	

### Avalanche problems



### Danger ratings



### Expositions



# Avalanche report for Friday, 24.02.2023

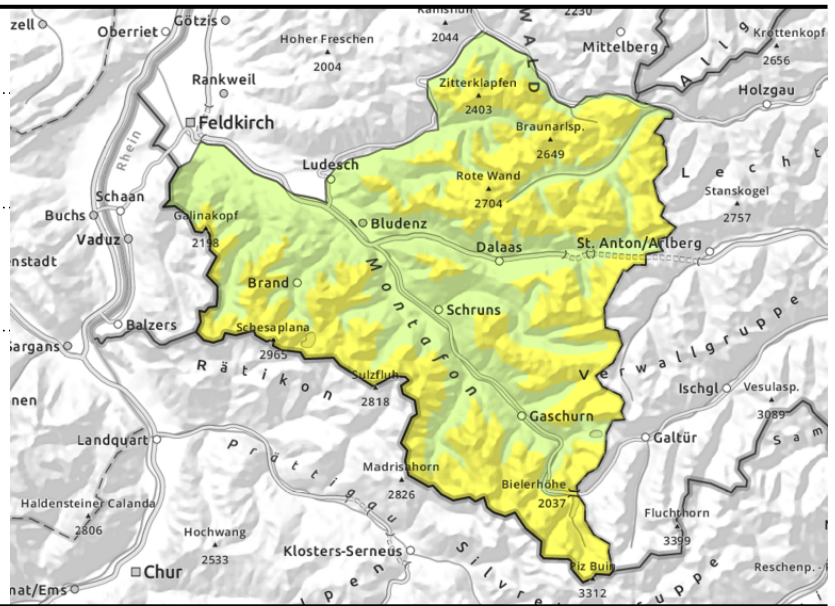
Lechquellengebirge, Lechtaler Alpen, Verwall, Rätikon West, Rätikon Ost, Silvretta



>2400m unfavourable intermediate layers in places



isolated glide-snow avalanches



## Persistent weak layer mostly on high-altitude shady slopes

Avalanche prone locations for dry-snow avalanches occur above 2400 m, mostly in seldom-tracked steep terrain. Transitions from shallow to deep snow, e.g. entries into gullies and bowls, require caution. Avalanches are possible particularly by large additional loading. A cautious route selection is recommended. Due to rain impact and a lack of outgoing nocturnal radiation, slides, wet-snow and glide-snow avalanches are possible.

### Snowpack structure

In the upper and mid-parts of the snowpack are expansively metamorphosed (faceted) layers, mostly blanketed to a sufficient degree, thus unlikely to trigger. If at all, then in transitions from shallow to deep snow. These danger zones are not visible to the naked eye. In higher exposed ones there are small, older snowdrift accumulations. Due to outgoing radiation and lower temperatures the snowpack surface at high altitudes has a melt-freeze crust.

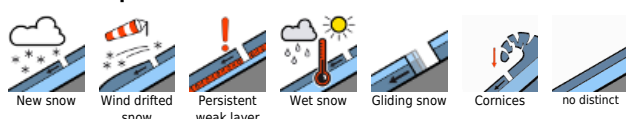
### Weather

Nocturnal hours: skies will have scattered clouds to clearness. Friday: a westerly air current will bring dry weather with clouds and sunny intervals, and intensifying winds. On Friday night, a cold front will make conditions deteriorate, minor snowfall and storm and cold will result. At 2000 m: 0 degrees. Brisk to strong W/SW winds.

### Outlook

Saturday will be cold and windy, some snowfall will carry over into the daytime, but with only modest amounts (around the Arlberg: about 20 cm) With strong W/NW winds and cold, the fresh snow will be transported. Avalanche danger levels will increase.

#### Avalanche problems

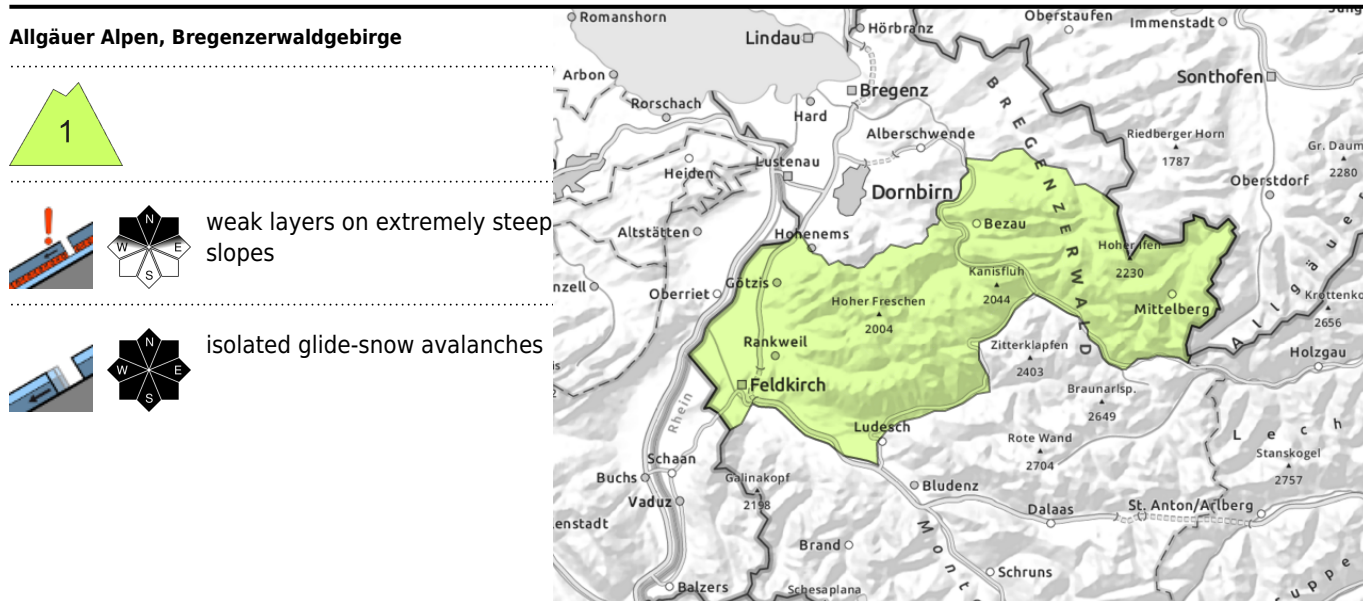


#### Danger ratings



#### Expositions





## Mostly favourable conditions

Low avalanche danger in the morning. Isolated danger zones for dry snow avalanches mostly in steep shady terrain, caution urged in transitions from shallow to deep snow, e.g. at entries into gullies and bowls. Caution against falls. Due to rain impact and a lack of outgoing nocturnal radiation, slides, wet-snow and glide-snow avalanches are possible.

## Snowpack structure

The snowpack is generally well consolidated and stable in the morning. On shady slopes there are weak layers in places. The snowpack loses its firmness during the day on steep sunny slopes and at low altitudes.

## Weather

Nocturnal hours: skies will have scattered clouds to clearness. Friday: a westerly air current will bring dry weather with clouds and sunny intervals, and intensifying winds. On Friday night, a cold front will make conditions deteriorate, minor snowfall and storm and cold will result. At 2000 m: 0 degrees. Brisk to strong W/SW winds.

## Outlook

Saturday will be cold and windy, some snowfall will carry over into the daytime, but with only modest amounts (around the Arlberg: about 20 cm) With strong W/NW winds and cold, the fresh snow will be transported. Avalanche danger levels will increase.

### Avalanche problems



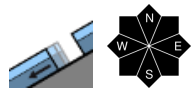
### Danger ratings



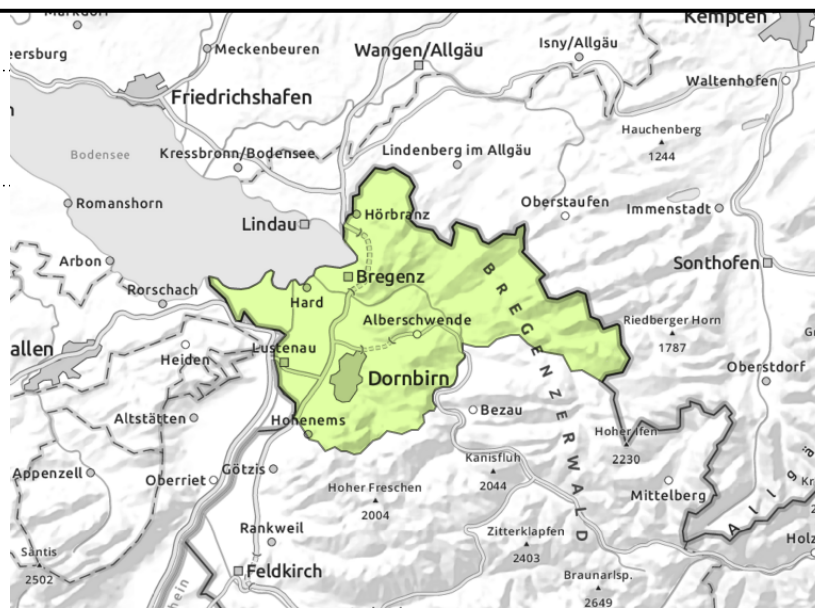
### Expositions



## Voralpenbereich



isolated small glide-snow avalanches



## Not much snow on the ground, mostly low danger

Avalanche danger is low. On smooth, steep grass-covered slopes and in sparsely wooded zones, isolated small glide-snow avalanches are possible.

### Snowpack structure

Due to outgoing radiation and lower temperatures the snowpack surface freezes, then softens during the daytime hours. The snow is insufficient for backcountry tours.

### Weather

Nocturnal hours: skies will have scattered clouds to clearness. Friday: a westerly air current will bring dry weather with clouds and sunny intervals, and intensifying winds. On Friday night, a cold front will make conditions deteriorate, minor snowfall and storm and cold will result. At 2000 m: 0 degrees. Brisk to strong W/SW winds.

### Outlook

Saturday will be cold and windy, some snowfall will carry over into the daytime, but with only modest amounts (around the Arlberg: about 20 cm) With strong W/NW winds and cold, the fresh snow will be transported. Avalanche danger levels will increase.

Translated by Jeffrey McCabe, [www.creativtrans.com](http://www.creativtrans.com)

### Avalanche problems



### Danger ratings



### Expositions

