

Mostly favourable conditions continue

	2400 m	Lechquellengebirge, Lechtaler Alpen, Verwall, Rätikon West, Rätikon Ost, Silvretta	
		Allgäuer Alpen, Bregenzerwaldgebirge	
		Voralpenbereich	

Avalanche problems



Danger ratings



Expositions



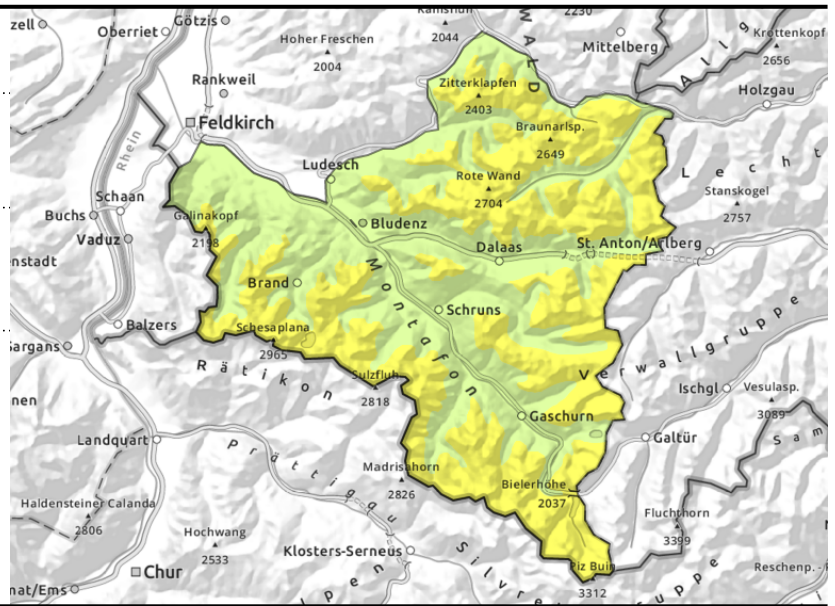
Avalanche report for **Thursday, 23.02.2023**

Lechquellengebirge, Lechtaler Alpen, Verwall, Rätikon West, Rätikon Ost, Silvretta



>2400m unfavourable intermediate layers in places

in zones with rain impact, lack of outgoing radiation: slides, wet-snow, glide-snow avalanches



Persistent weak layer mostly on high-altitude shady slopes - wet-snow avalanches at low altitudes

Avalanche prone locations for dry-snow avalanches occur above 2400 m, mostly in seldom-tracked steep terrain. Transitions from shallow to deep snow, e.g. entries into gullies and bowls, require caution. Avalanches are possible particularly by large additional loading. A cautious route selection is recommended. Due to rain impact and a lack of outgoing nocturnal radiation, slides, wet-snow and glide-snow avalanches are possible.

Snowpack structure

In the upper and mid-parts of the snowpack are expansively metamorphosed (faceted) layers, mostly blanketed to a sufficient degree, thus unlikely to trigger. If at all, then in transitions from shallow to deep snow. These danger zones are not visible to the naked eye. In higher exposed ones there are small, older snowdrift accumulations. Due to rainfall and lacking nocturnal outgoing radiation, the snowpack is forfeiting its firmness.

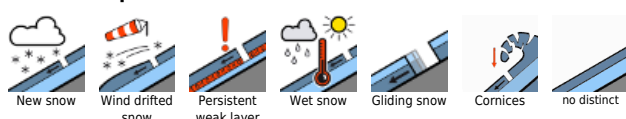
Weather

Nocturnal hours: skies will be heavily overcast, some light rainfall is possible. The snowfall level will lie at 1500m. Thursday: Peaks will often be wrapped in fog, minor snowfall above 1500 m. At 2000 m: +2 to -1 degree. Light SW winds.

Outlook

Friday will be pleasant, sunny with some clouds, intermittently strong winds. No change in avalanche danger on Friday. The risk of wet-snow avalanches will recede.

Avalanche problems



Danger ratings



Expositions



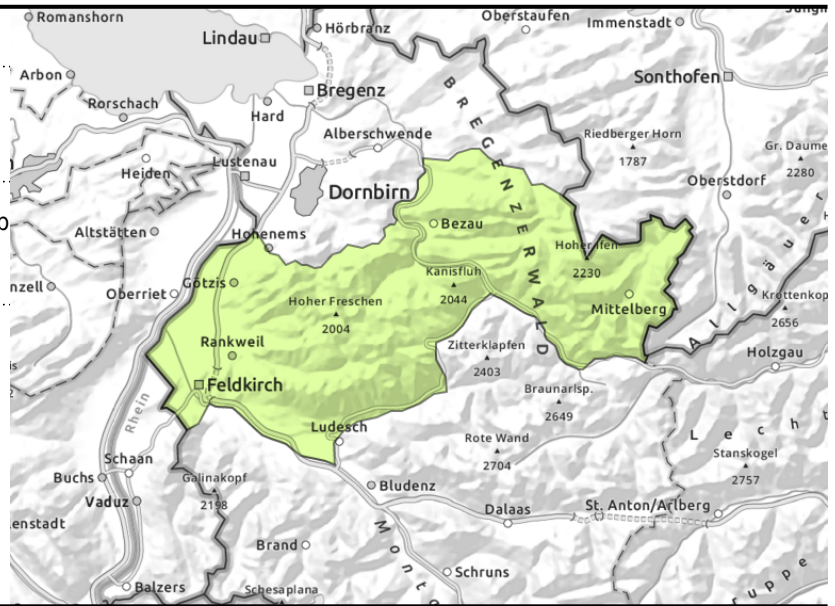
Allgäuer Alpen, Bregenzerwaldgebirge



weak layers on extremely steep slopes



in zones with rain impact, lack of outgoing radiation: slides, wet-snow, glide-snow avalanches



Mostly favourable conditions throughout the morning hours

Low avalanche danger in the morning. Isolated danger zones for dry snow avalanches mostly in steep shady terrain, caution urged in transitions from shallow to deep snow, e.g. at entries into gullies and bowls. Caution against falls. Due to rain impact and a lack of outgoing nocturnal radiation, slides, wet-snow and glide-snow avalanches are possible.

Snowpack structure

The snowpack is generally well consolidated and stable in the morning. On shady slopes there are weak layers in places. The snowpack loses its firmness during the day on steep sunny slopes and at low altitudes.

Weather

Nocturnal hours: skies will be heavily overcast, some light rainfall is possible. The snowfall level will lie at 1500m. Thursday: Peaks will often be wrapped in fog, minor snowfall above 1500 m. At 2000 m: +2 to -1 degree. Light SW winds.

Outlook

Friday will be pleasant, sunny with some clouds, intermittently strong winds. No change in avalanche danger on Friday. The risk of wet-snow avalanches will recede.

Avalanche problems



Danger ratings



Expositions

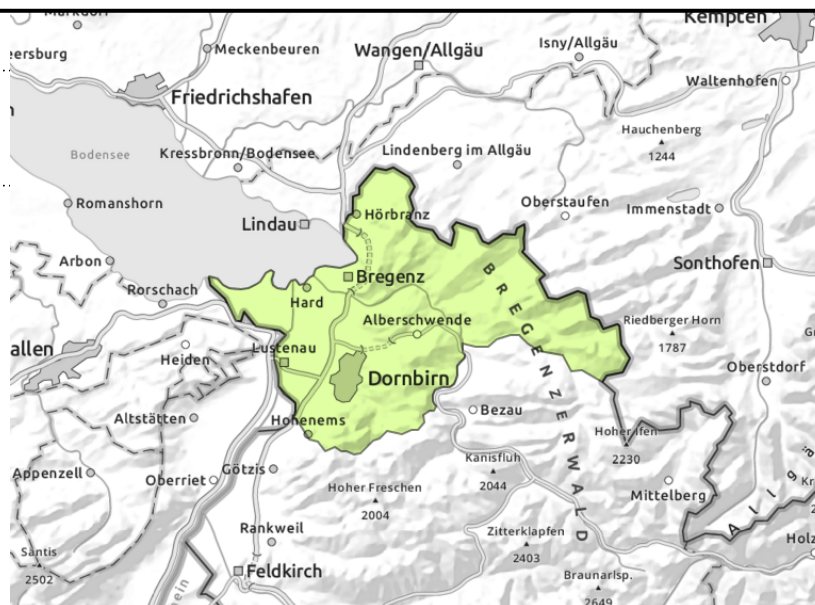


Avalanche report for **Thursday, 23.02.2023**

Voralpenbereich



small slides and isolated glide-snow avalanches



Not much snow on the ground, mostly low danger

Avalanche danger is low. During the course of the day, small slides and wet-snow avalanches can trigger. On smooth, steep grass-covered slopes and in sparsely wooded zones, isolated small glide-snow avalanches are possible.

Snowpack structure

The shallow snowpack has settled well and is stable. Solar radiation and daytime warming moisten the snowpack and lead to a loss of firmness in the snowpack. On sunny slopes, the ground is becoming bare of snow to an increasing degree, insufficient for backcountry tours.

Weather

Nocturnal hours: skies will be heavily overcast, some light rainfall is possible. The snowfall level will lie at 1500m. Thursday: Peaks will often be wrapped in fog, minor snowfall above 1500 m. At 2000 m: +2 to -1 degree. Light SW winds.

Outlook

Friday will be pleasant, sunny with some clouds, intermittently strong winds. Avalanche danger remains low.

Translated by Jeffrey McCabe, www.creativtrans.com

Avalanche problems



Danger ratings



Expositions

