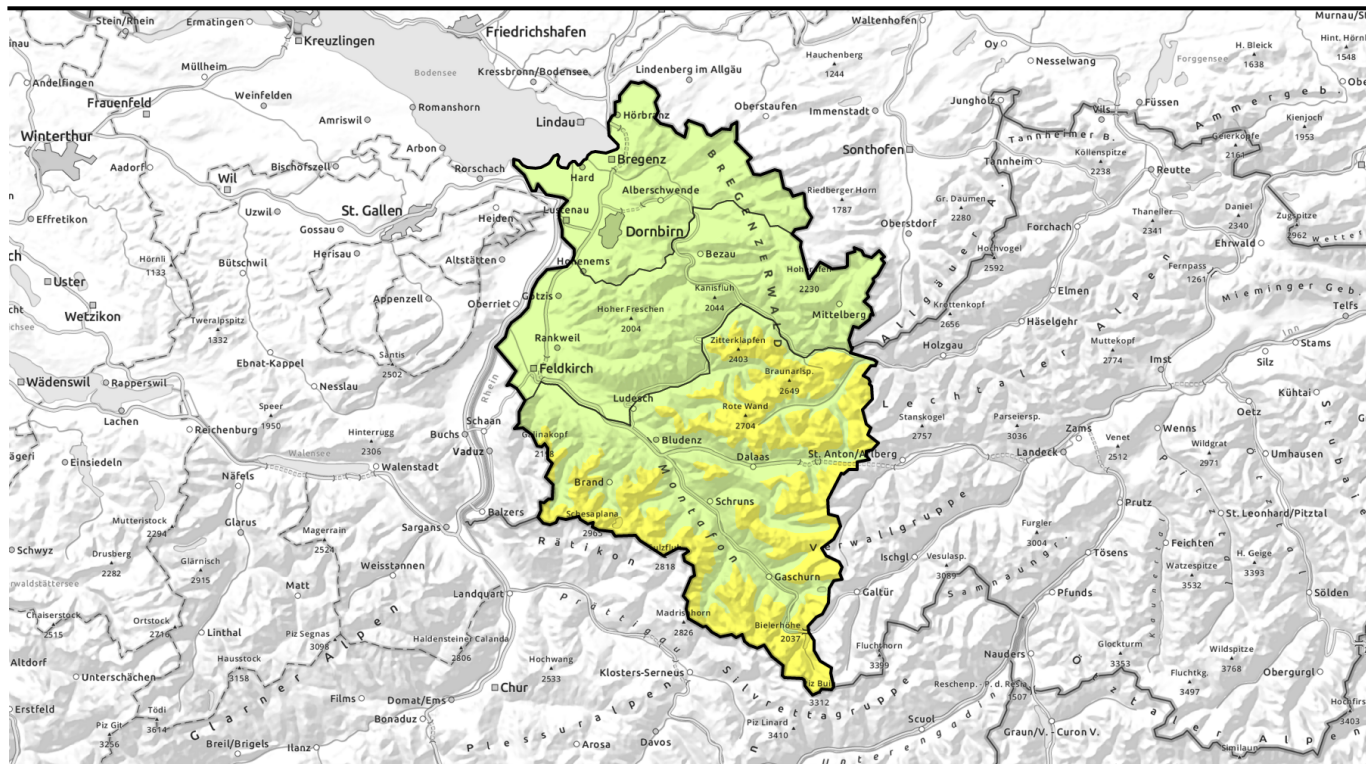


Avalanche report for Wednesday, 22.02.2023, morning



Mostly favourable conditions with daytime rise in danger of wet-snow avalanches

	2200 m Lechtquellengebirge, Lechtaler Alpen, Verwall, Rätikon West, Rätikon Ost, Silvretta		
	Allgäuer Alpen, Bregenzerwaldgebirge		
	Voralpenbereich		

Avalanche problems



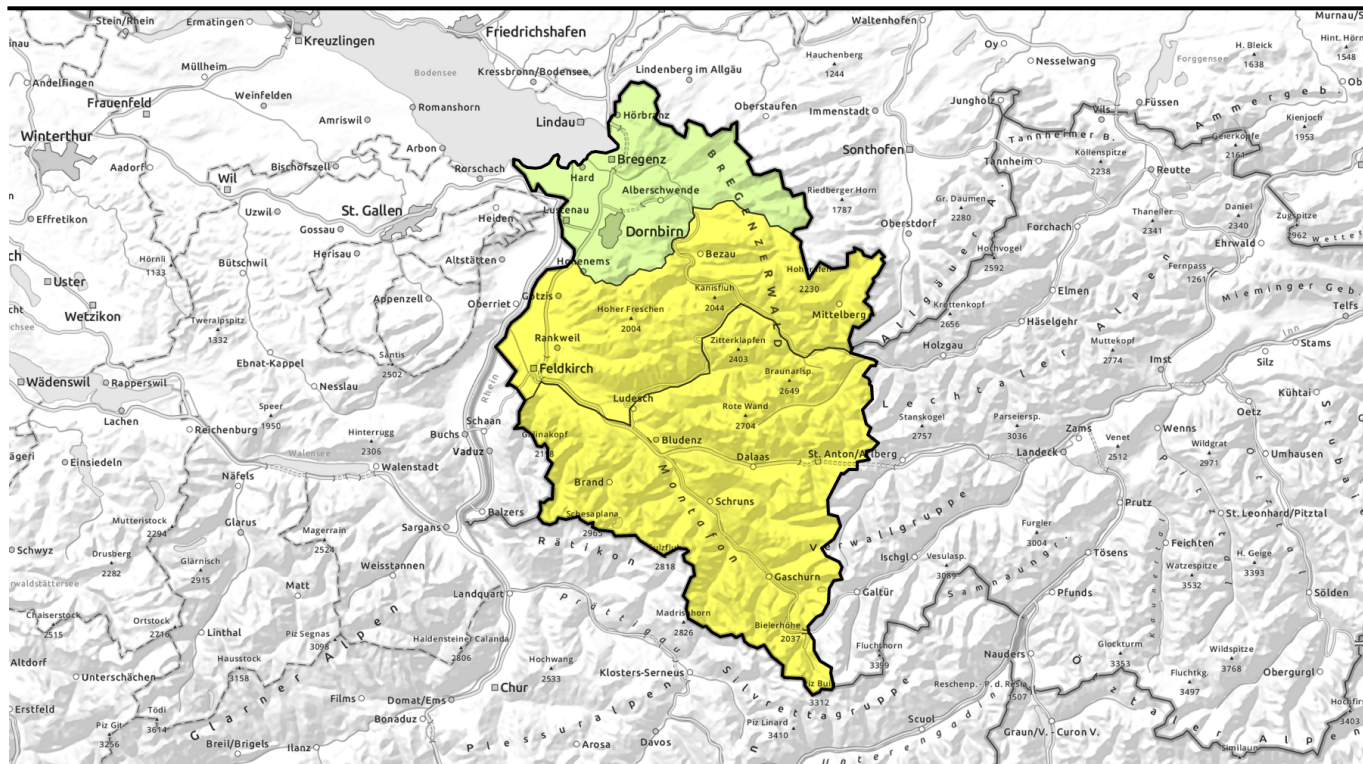
Danger ratings



Expositions



Avalanche report for Wednesday, 22.02.2023, afternoon



weiterhin überwiegend günstige Bedingungen - untertags nasse Lawinen beachten

	Lechtallengebirge, Lechtaler Alpen, Verwall, Rätikon West, Rätikon Ost, Silvretta	
	Allgäuer Alpen, Bregenzerwaldgebirge	
	Vorarlpenbereich	

Avalanche problems



Danger ratings

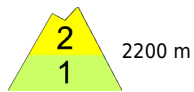


Expositions

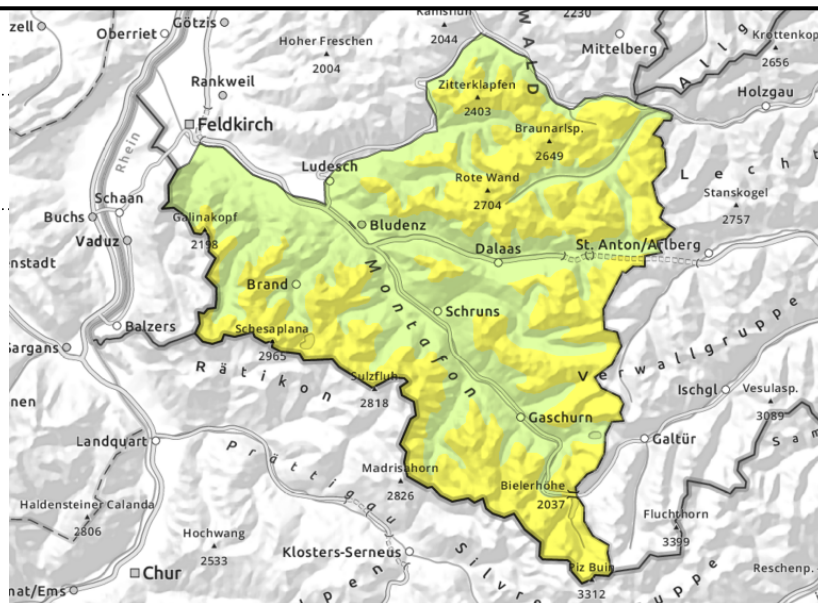


Avalanche report for Wednesday, 22.02.2023, morning

Lechquellengebirge, Lechtaler Alpen, Verwall, Rätikon West, Rätikon Ost, Silvretta



unfavourable intermediate layers in some places



Weak old snow esp. on shady slopes - wet-snow avalanches during daytime hours

Avalanche prone locations for dry-snow avalanches occur above 2200 m, mostly in seldom-tracked steep terrain. Transitions from shallow to deep snow, e.g. entries into gullies and bowls, require caution. Avalanches are possible particularly by large additional loading. A cautious route selection is recommended. Due to solar radiation and daytime warming, small to medium sized wet-snow and glide-snow avalanches are possible during the course of the day.

Snowpack structure

In the upper and mid-parts of the snowpack are expansively metamorphosed (faceted) layers, mostly blanketed to a sufficient degree, thus unlikely to trigger. If at all, then in transitions from shallow to deep snow. These danger zones are not visible to the naked eye. In higher exposed ones there are small, older snowdrift accumulations. Due to solar radiation and daytime warming the snowpack often forfeits firmness during the day.

Weather

Nocturnal hours: mostly a night of clear skies and good outgoing radiation, some high clouds as morning approaches. Wednesday: clouds above the peaks will hamper the sunshine, create diffuse light conditions, most summits will remain free. The clouds will descend as the day progresses. At 2000 m: +3 degrees. Light SW winds.

Outlook

Thursday will be heavily overcast and foggy, a few minor snow showers. The danger of dry-snow avalanches is not expected to change significantly. The danger of wet-snow avalanches will recede.

Avalanche problems



Danger ratings



Expositions



Avalanche report for Wednesday, 22.02.2023, afternoon

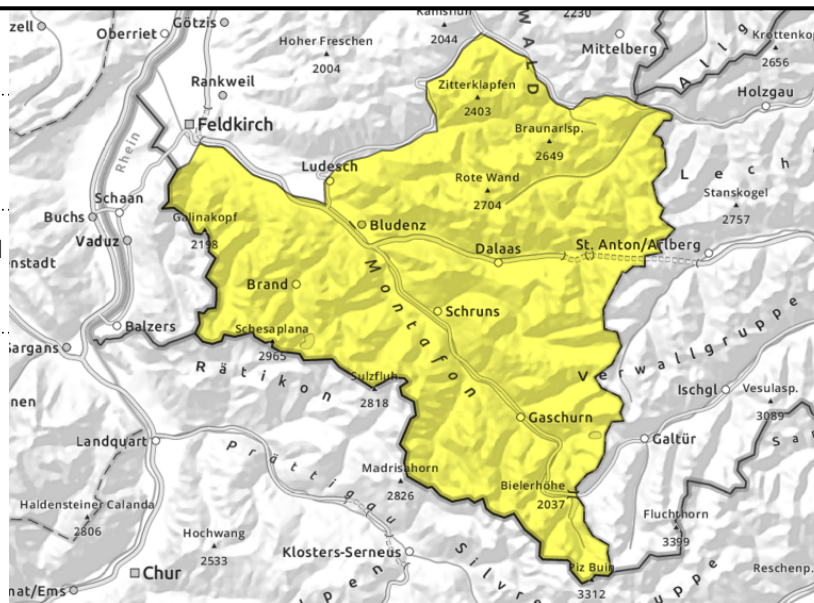
Lechquellengebirge, Lechtaler Alpen, Verwall, Rätikon West, Rätikon Ost, Silvretta



small-to-medium wet-snow and glide-snow avalanches



unfavourable intermediate layers in some places



Weak old snow esp. on shady slopes - wet-snow avalanches during daytime hours

Avalanche prone locations for dry-snow avalanches occur above 2200 m, mostly in seldom-tracked steep terrain. Transitions from shallow to deep snow, e.g. entries into gullies and bowls, require caution. Avalanches are possible particularly by large additional loading. A cautious route selection is recommended. Due to solar radiation and daytime warming, small to medium sized wet-snow and glide-snow avalanches are possible during the course of the day.

Snowpack structure

In the upper and mid-parts of the snowpack are expansively metamorphosed (faceted) layers, mostly blanketed to a sufficient degree, thus unlikely to trigger. If at all, then in transitions from shallow to deep snow. These danger zones are not visible to the naked eye. In higher exposed ones there are small, older snowdrift accumulations. Due to solar radiation and daytime warming the snowpack often forfeits firmness during the day.

Weather

Nocturnal hours: mostly a night of clear skies and good outgoing radiation, some high clouds as morning approaches. Wednesday: clouds above the peaks will hamper the sunshine, create diffuse light conditions, most summits will remain free. The clouds will descend as the day progresses. At 2000 m: +3 degrees. Light SW winds.

Outlook

Thursday will be heavily overcast and foggy, a few minor snow showers. The danger of dry-snow avalanches is not expected to change significantly. The danger of wet-snow avalanches will recede.

Avalanche problems



Danger ratings



Expositions

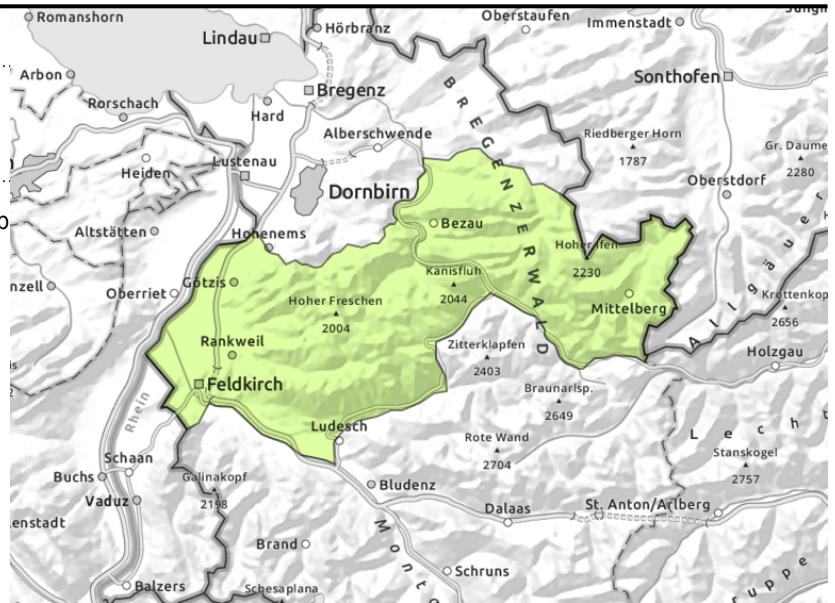


Avalanche report for Wednesday, 22.02.2023, morning

Allgäuer Alpen, Bregenzerwaldgebirge



weak layers on extremely steep slopes



Mostly favourable conditions throughout the morning hours

Low avalanche danger in the morning. Danger zones for dry snow avalanches mostly in steep shady terrain, caution urged in transitions from shallow to deep snow, e.g. at entries into gullies and bowls. Due to higher temperatures and solar radiation, small-to-medium, in isolated cases also large-sized wet-snow and glide-snow avalanches are possible on very steep sunny slopes during the course of the day.

Snowpack structure

The snowpack is generally well consolidated and stable in the morning. On shady slopes there are weak layers in places. The snowpack loses its firmness during the day on steep sunny slopes and at low altitudes.

Weather

Nocturnal hours: mostly a night of clear skies and good outgoing radiation, some high clouds as morning approaches. Wednesday: clouds above the peaks will hamper the sunshine, create diffuse light conditions, most summits will remain free. The clouds will descend as the day progresses. At 2000 m: +3 degrees. Light SW winds.

Outlook

Thursday will be heavily overcast and foggy, a few minor snow showers. The danger of dry-snow avalanches is not expected to change significantly. The danger of wet-snow avalanches will increase slightly during the day.

Avalanche problems



Danger ratings



Expositions



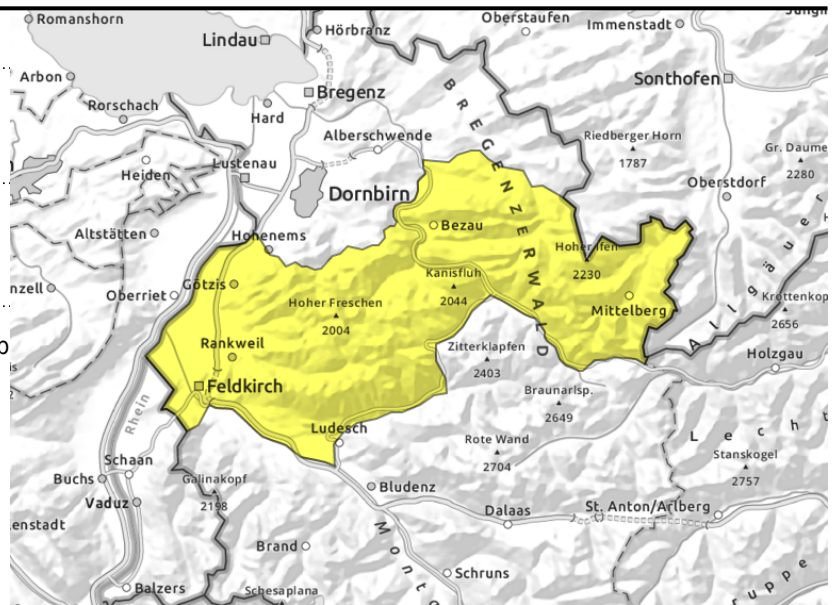
Allgäuer Alpen, Bregenzerwaldgebirge



higher daytime temperatures, solar radiation



weak layers on extremely steep slopes



Mostly favourable conditions throughout the morning hours

Low avalanche danger in the morning. Danger zones for dry snow avalanches mostly in steep shady terrain, caution urged in transtions from shallow to deep snow, e.g. at entries into gullies and bowls. Due to higher temperatures and solar radiation, small-to-medium, in isolated cases also large-sized wet-snow and glide-snow avalanches are possible on very steep sunny slopes during the course of the day.

Snowpack structure

The snowpack is generally well consolidated and stable in the morning. On shady slopes there are weak layers in places. The snowpack loses its firmness during the day on steep sunny slopes and at low altitudes.

Weather

Nocturnal hours: mostly a night of clear skies and good outgoing radiation, some high clouds as morning approaches. Wednesday: clouds above the peaks will hamper the sunshine, create diffuse light conditions, most summits will remain free. The clouds will descend as the day progresses. At 2000 m: +3 degrees. Light SW winds.

Outlook

Thursday will be heavily overcast and foggy, a few minor snow showers. The danger of dry-snow avalanches is not expected to change significantly. The danger of wet-snow avalanches will increase slightly during the day.

Avalanche problems



Danger ratings



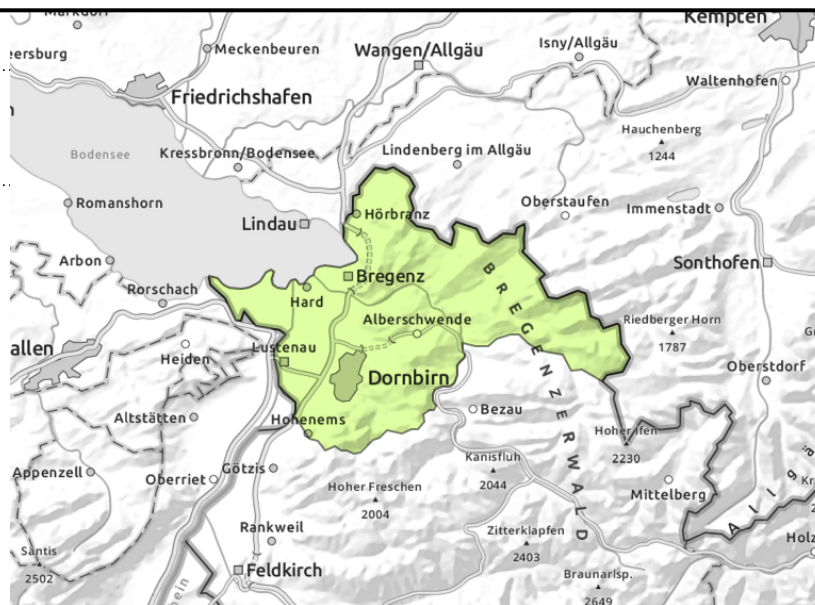
Expositions



Voralpenbereich



small slides and isolated glide-snow avalanches



Not much snow on the ground, mostly low danger

Avalanche danger is low. During the course of the day, small slides and wet-snow avalanches can trigger. On smooth, steep grass-covered slopes and in sparsely wooded zones, isolated small glide-snow avalanches are possible. Glide cracks are indicators of danger.

Snowpack structure

The shallow snowpack has settled well and is stable. Solar radiation and daytime warming moisten the snowpack and lead to a loss of firmness in the snowpack. On sunny slopes, the ground is becoming bare of snow to an increasing degree.

Weather

Nocturnal hours: mostly a night of clear skies and good outgoing radiation, some high clouds as morning approaches. Wednesday: clouds above the peaks will hamper the sunshine, create diffuse light conditions, most summits will remain free. The clouds will descend as the day progresses. At 2000 m: +3 degrees. Light SW winds.

Outlook

Thursday will be heavily overcast and foggy. Above 1500m a few minor snow showers. Avalanche danger will remain low.

Translated by Jeffrey McCabe, www.creativtrans.com

Avalanche problems



Danger ratings



Expositions

