

## Mostly favourable conditions with slight daytime rise in danger of wet-snow avalanches

	2000 m Lechtquellengebirge, Lechtaler Alpen, Verwall, Rätikon West, Rätikon Ost, Silvretta	
	Allgäuer Alpen, Bregenzerwaldgebirge	
	Voralpenbereich	

### Avalanche problems

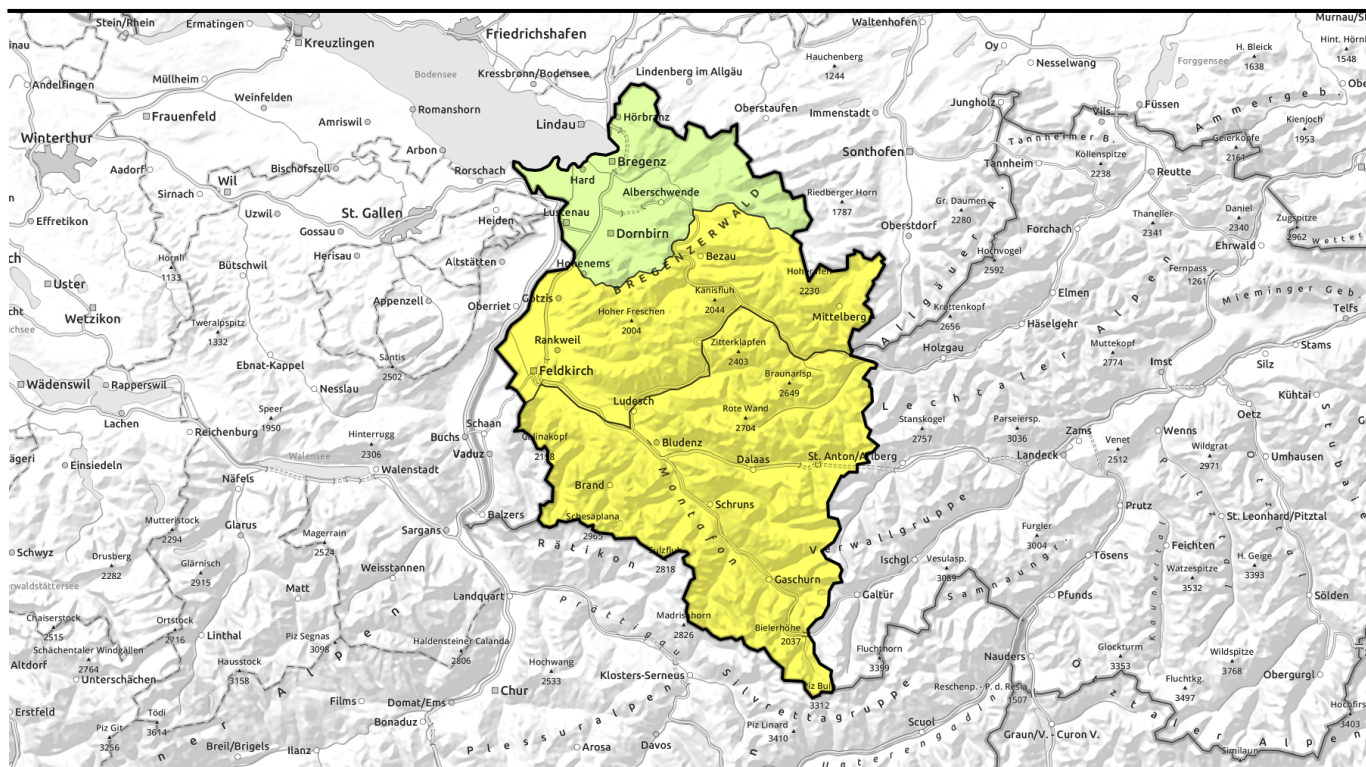


### Danger ratings



### Expositions





## weiterhin überwiegend günstige Bedingungen - tageszeitlichem Gefahrenanstieg durch nasse Lawinen beachten

	Lechtallengebirge, Lechtaler Alpen, Verwall, Rätikon West, Rätikon Ost, Silvretta	
	Allgäuer Alpen, Bregenzerwaldgebirge	
	Voralpenbereich	

### Avalanche problems



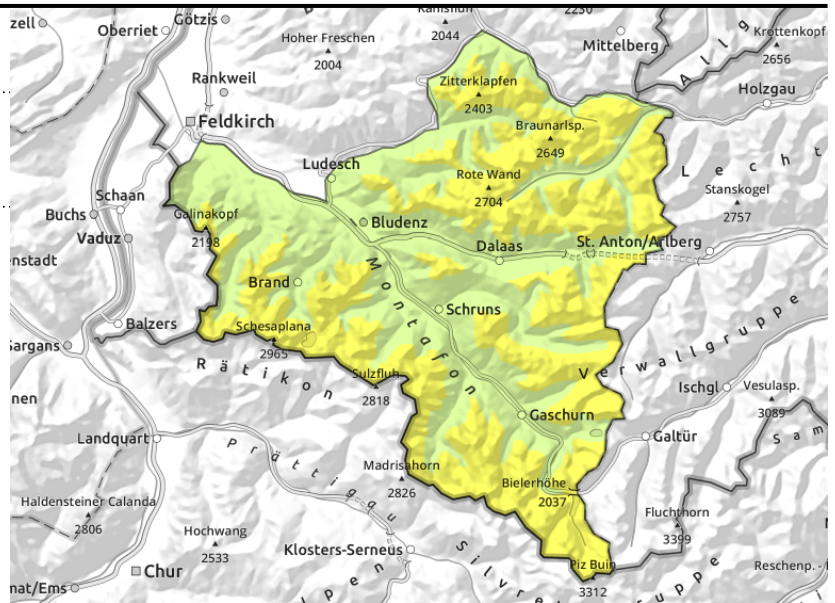
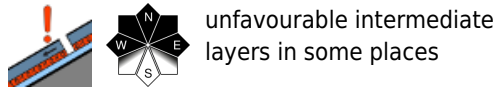
### Danger ratings



### Expositions



**Lechquellengebirge, Lechtaler Alpen, Verwall, Rätikon West, Rätikon Ost, Silvretta**



**Persistent weak layer esp. on shady slopes - wet-snow avalanches due to lacking nocturnal radiation**

Avalanche prone locations for dry-snow avalanches occur above 2000 m, mostly in seldom-tracked steep terrain. Transitions from shallow to deep snow, e.g. entries into gullies and bowls, require caution. Avalanches are possible particularly by large additional loading. Small fresh snowdrift accumulations in high-altitude exposed spots should be circumvented. A cautious route selection is recommended. Due to solar radiation and daytime warming, small to medium sized wet-snow and glide-snow avalanches are possible during the course of the day.

**Snowpack structure**

In the upper and mid-parts of the snowpack are expansively metamorphosed (faceted) layers, mostly blanketed to a sufficient degree, thus unlikely to trigger. If at all, then in transitions from shallow to deep snow. These danger zones are not visible to the naked eye. In higher exposed ones there are small, older snowdrift accumulations. Due to solar radiation and daytime warming the snowpack often forfeits firmness during the day.

**Weather**

Nocturnal hours: mostly dry, only variably cloudy skies. Monday: frequent sunshine but for a few harmless cirrus clouds. Rising temperatures: at 2000 m from -3 to +4 degrees. The brisk northerly winds will slacken off.

**Outlook**

Tuesday will be very sunny and mild. Danger of wet-snow avalanches will increase during the daytime, especially on sunny slopes.

**Avalanche problems**



**Danger ratings**



**Expositions**



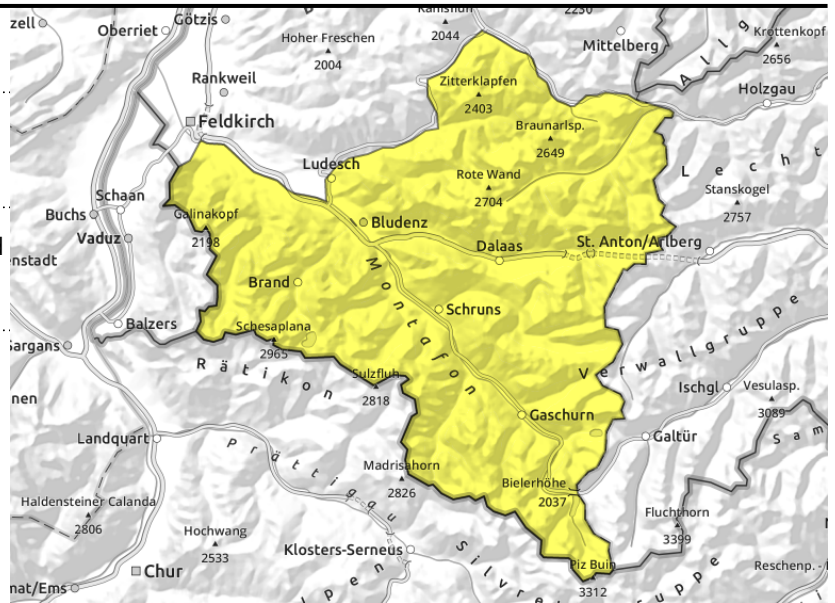
**Lechquellengebirge, Lechtaler Alpen, Verwall, Rätikon West, Rätikon Ost, Silvretta**



small-to-medium wet-snow and glide-snow avalanches



unfavourable intermediate layers in some places



**Persistent weak layer esp. on shady slopes - wet-snow avalanches due to lacking nocturnal radiation**

Avalanche prone locations for dry-snow avalanches occur above 2000 m, mostly in seldom-tracked steep terrain. Transitions from shallow to deep snow, e.g. entries into gullies and bowls, require caution. Avalanches are possible particularly by large additional loading. Small fresh snowdrift accumulations in high-altitude exposed spots should be circumvented. A cautious route selection is recommended. Due to solar radiation and daytime warming, small to medium sized wet-snow and glide-snow avalanches are possible during the course of the day.

**Snowpack structure**

In the upper and mid-parts of the snowpack are expansively metamorphosed (faceted) layers, mostly blanketed to a sufficient degree, thus unlikely to trigger. If at all, then in transitions from shallow to deep snow. These danger zones are not visible to the naked eye. In higher exposed ones there are small, older snowdrift accumulations. Due to solar radiation and daytime warming the snowpack often forfeits firmness during the day.

**Weather**

Nocturnal hours: mostly dry, only variably cloudy skies. Monday: frequent sunshine but for a few harmless cirrus clouds. Rising temperatures: at 2000 m from -3 to +4 degrees. The brisk northerly winds will slacken off.

**Outlook**

Tuesday will be very sunny and mild. Danger of wet-snow avalanches will increase during the daytime, especially on sunny slopes.

**Avalanche problems**



**Danger ratings**



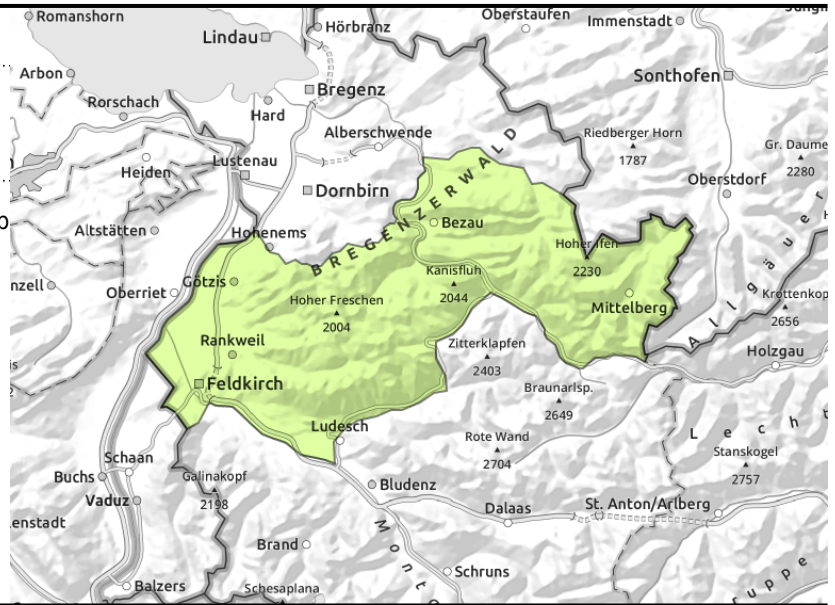
**Expositions**



**Allgäuer Alpen, Bregenzerwaldgebirge**



weak layers on extremely steep slopes



**Mostly favourable conditions throughout the morning hours**

Low avalanche danger in the morning. Danger zones for dry snow avalanches mostly in steep shady terrain, caution urged in transtions from shallow to deep snow, e.g. at entries into gullies and bowls. Due to higher temperatures and solar radiation, small-to-medium, in isolated cases also large-sized wet-snow and glide-snow avalanches are possible on very steep sunny slopes during the course of the day.

**Snowpack structure**

The snowpack is generally well consolidated and stable, despite reduced nocturnal outgoing radiation. On shady slopes there are weak layers in places. At high altitudes in exposed zones, fresh, small snowdrifts are apparent. Due to reduced nocturnal radiation and in zones where there is rain impact, the snowpack loses its firmness during the day.

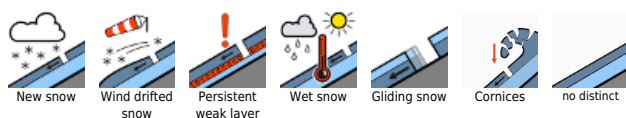
**Weather**

Nocturnal hours: mostly dry, only variably cloudy skies. Monday: frequent sunshine but for a few harmless cirrus clouds. Rising temperatures: at 2000 m from -3 to +4 degrees. The brisk northerly winds will slacken off.

**Outlook**

Tuesday will be very sunny and mild. Danger of wet-snow avalanches will increase during the daytime, especially on sunny slopes.

**Avalanche problems**



**Danger ratings**



**Expositions**



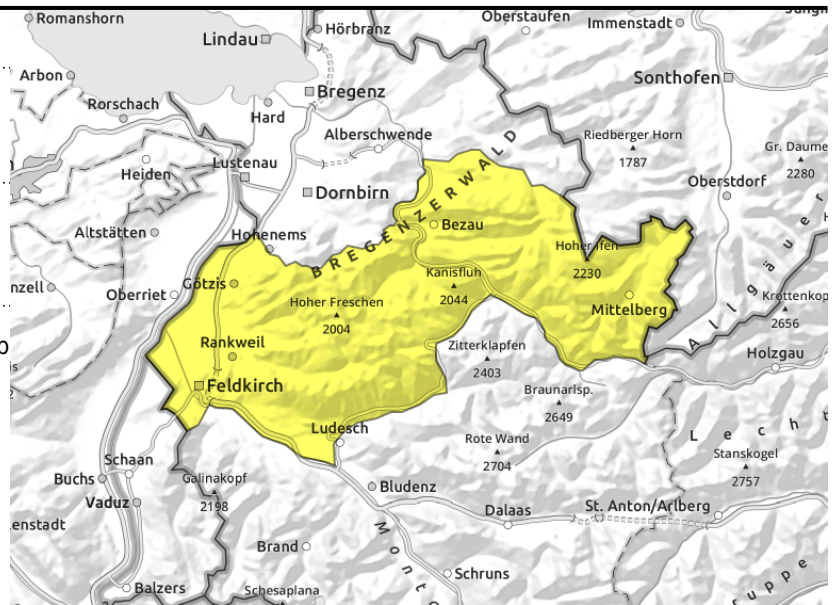
**Allgäuer Alpen, Bregenzerwaldgebirge**



higher daytime temperatures plus solar radiation



weak layers on extremely steep slopes



**Mostly favourable conditions throughout the morning hours**

Low avalanche danger in the morning. Danger zones for dry snow avalanches mostly in steep shady terrain, caution urged in transitions from shallow to deep snow, e.g. at entries into gullies and bowls. Due to higher temperatures and solar radiation, small-to-medium, in isolated cases also large-sized wet-snow and glide-snow avalanches are possible on very steep sunny slopes during the course of the day.

**Snowpack structure**

The snowpack is generally well consolidated and stable, despite reduced nocturnal outgoing radiation. On shady slopes there are weak layers in places. At high altitudes in exposed zones, fresh, small snowdrifts are apparent. Due to reduced nocturnal radiation and in zones where there is rain impact, the snowpack loses its firmness during the day.

**Weather**

Nocturnal hours: mostly dry, only variably cloudy skies. Monday: frequent sunshine but for a few harmless cirrus clouds. Rising temperatures: at 2000 m from -3 to +4 degrees. The brisk northerly winds will slacken off.

**Outlook**

Tuesday will be very sunny and mild. Danger of wet-snow avalanches will increase during the daytime, especially on sunny slopes.

**Avalanche problems**



**Danger ratings**



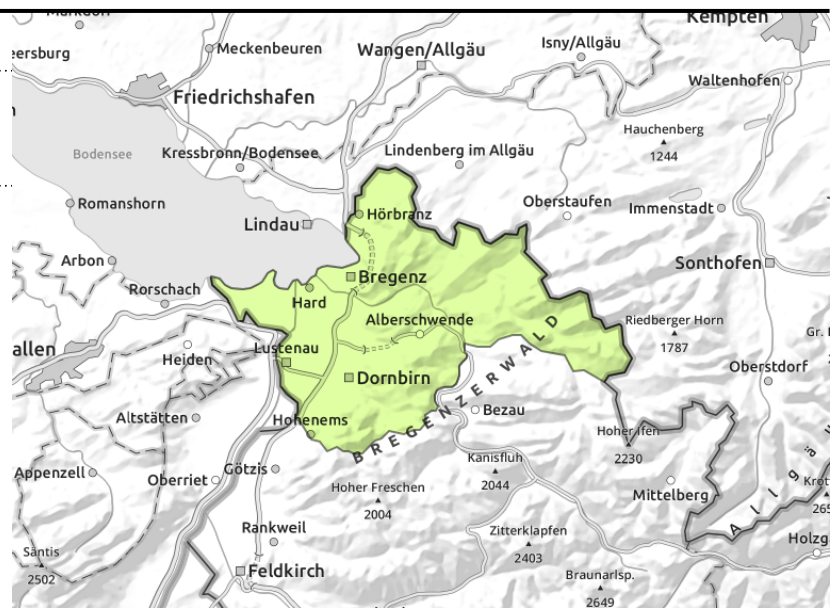
**Expositions**



## Voralpenbereich



small slides and isolated glide-snow avalanches



## Not much snow on the ground, mostly low danger

Avalanche danger is low. During the course of the day, small slides and wet-snow avalanches can trigger. On smooth, steep grass-covered slopes and in sparsely wooded zones, isolated small glide-snow avalanches are possible. Glide cracks are indicators of danger.

### Snowpack structure

The shallow snowpack has settled well and is stable. Solar radiation and daytime warming moisten the snowpack and lead to a loss of firmness in the snowpack. On sunny slopes, the ground is becoming bare of snow to an increasing degree.

### Weather

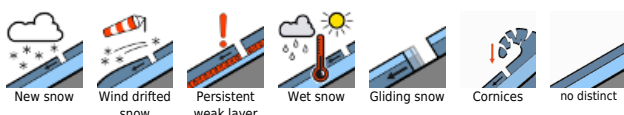
Nocturnal hours: mostly dry, only variably cloudy skies. Monday: frequent sunshine but for a few harmless cirrus clouds. Rising temperatures: at 2000 m from -3 to +4 degrees. The brisk northerly winds will slacken off.

### Outlook

Tuesday will be very sunny and mild. Danger of wet-snow avalanches will increase during the daytime, especially on sunny slopes.

Translated by Jeffrey McCabe, [www.creativtrans.com](http://www.creativtrans.com)

### Avalanche problems



### Danger ratings



### Expositions

