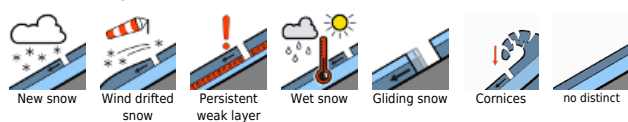


## Mostly favourable conditions with slight daytime rise in danger - Caution in shady steep terrain

	2000 m Lechquellengebirge, Lechtaler Alpen, Verwall, Rätikon West, Rätikon Ost, Silvretta	
	Allgäuer Alpen, Bregenzerwaldgebirge	
	Voralpenbereich	

### Avalanche problems

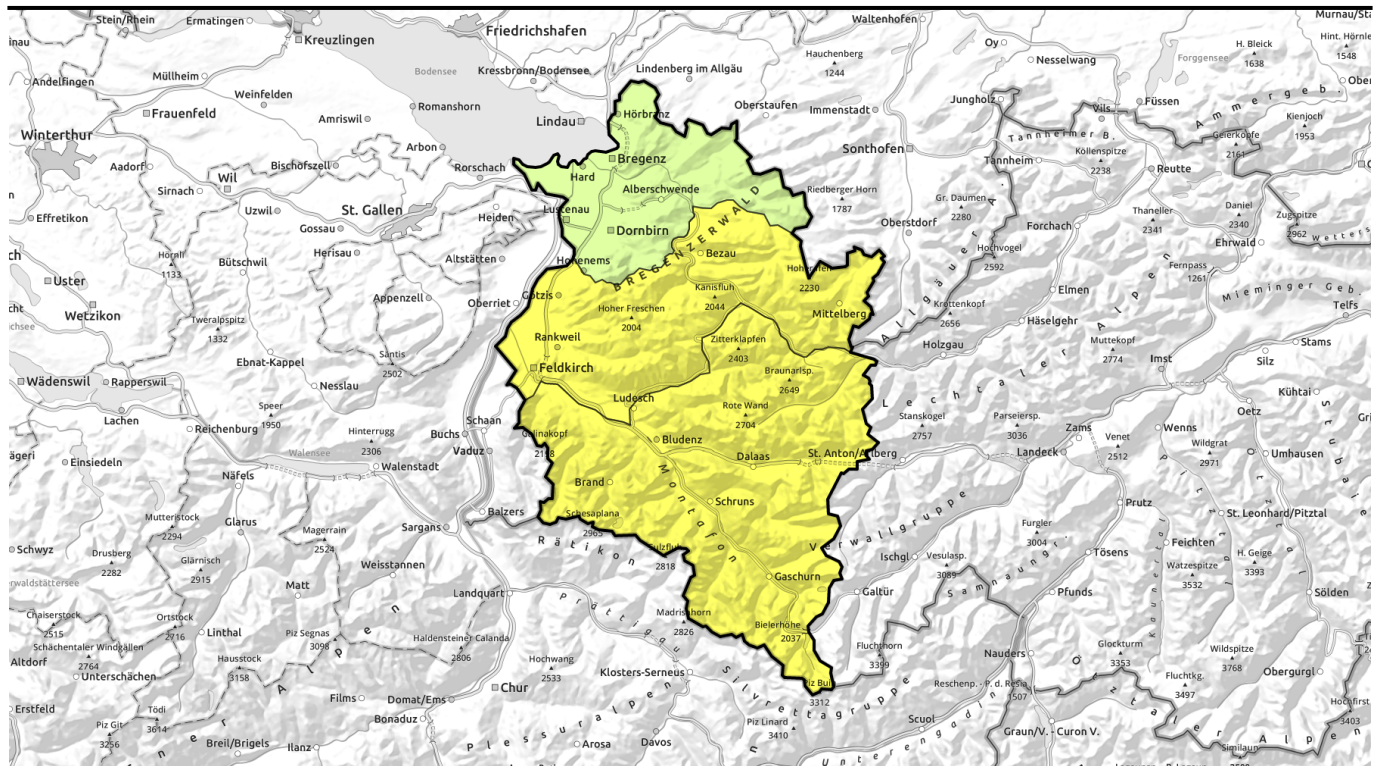


### Danger ratings



### Expositions

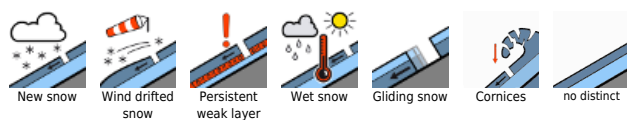




## weiterhin überwiegend günstige Bedingungen - Vorsicht im schattseitigen Steilgelände

	Lechtallengebirge, Lechtaler Alpen, Verwall, Rätikon West, Rätikon Ost, Silvretta	
	Allgäuer Alpen, Bregenzwaldgebirge	
	Vorarlpenbereich	

### Avalanche problems



### Danger ratings



### Expositions

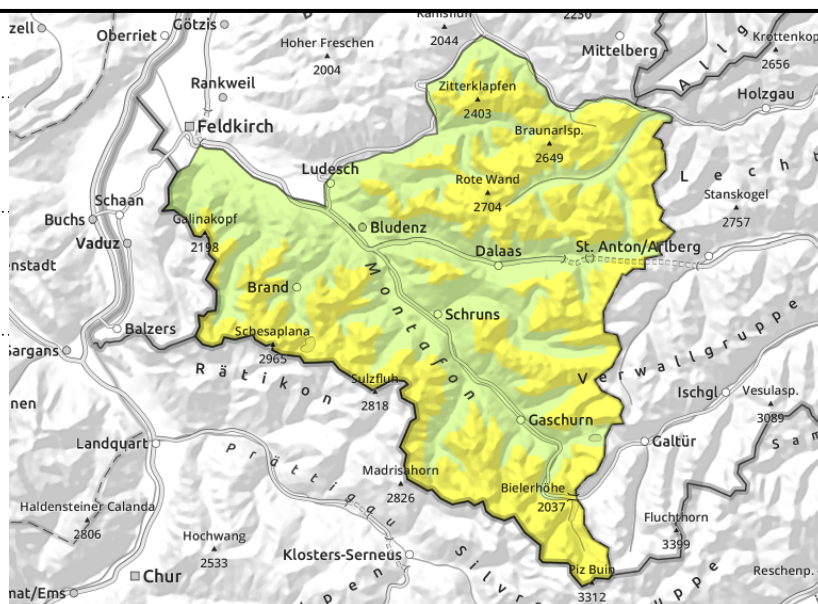


**Lechquellengebirge, Lechtaler Alpen, Verwall, Rätikon West, Rätikon Ost, Silvretta**



unfavourable intermediate layers in some places

reduced nocturnal longwave outgoing radiation



**Weak old snow esp. on shady slopes - wet-snow avalanches due to lacking nocturnal radiation**

Avalanche prone locations for dry-snow avalanches occur above 2000 m, mostly in seldom-tracked steep terrain. Transitions from shallow to deep snow, e.g. entries into gullies and bowls, require caution. Avalanches are possible particularly by large additional loading. Small fresh snowdrift accumulations in high-altitude exposed spots should be circumvented. A cautious route selection is recommended. Due to solar radiation and daytime warming, small to medium sized wet-snow and glide-snow avalanches are possible during the course of the day.

**Snowpack structure**

In the upper and mid-parts of the snowpack are expansively metamorphosed (faceted) layers, mostly blanketed to a sufficient degree, thus unlikely to trigger. If at all, then in transitions from shallow to deep snow. These danger zones are not visible to the naked eye. In higher exposed ones there are small, older snowdrift accumulations. Due to solar radiation and daytime warming the snowpack often forfeits firmness during the day.

**Weather**

Nocturnal hours: skies will be variably cloudy to heavily overcast, and mild. Sunday: clouds and fog with slight precipitation. Snowfall level will descend from 2000 m to 1500 m. In the afternoon, dry and clouds dispersing. At 2000 m: from +1 to -2 degrees. Strong W/NW winds.

**Outlook**

On Monday, lots of sunshine, little cloud. Rising temperatures. The NW winds will slacken off. At high altitudes, fresh snowdrifts require caution. Danger of wet-snow avalanches will recede as temperatures drop.

**Avalanche problems**



**Danger ratings**



**Expositions**



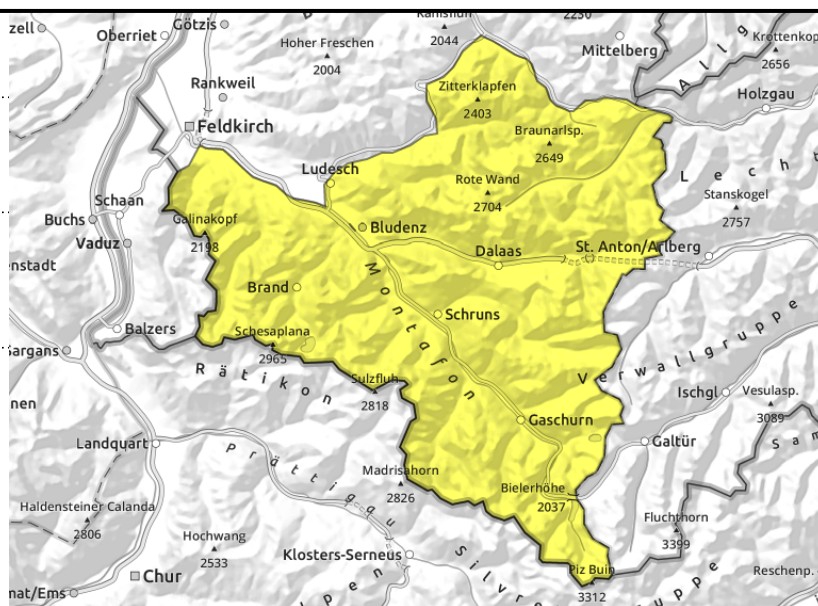
**Lechquellengebirge, Lechtaler Alpen, Verwall, Rätikon West, Rätikon Ost, Silvretta**



reduced nocturnal longwave outgoing radiation and rain impact



unfavourable intermediate layers in some places



**Weak old snow esp. on shady slopes - wet-snow avalanches due to lacking nocturnal radiation**

Avalanche prone locations for dry-snow avalanches occur above 2000 m, mostly in seldom-tracked steep terrain. Transitions from shallow to deep snow, e.g. entries into gullies and bowls, require caution. Avalanches are possible particularly by large additional loading. Small fresh snowdrift accumulations in high-altitude exposed spots should be circumvented. A cautious route selection is recommended. Due to solar radiation and daytime warming, small to medium sized wet-snow and glide-snow avalanches are possible during the course of the day.

**Snowpack structure**

In the upper and mid-parts of the snowpack are expansively metamorphosed (faceted) layers, mostly blanketed to a sufficient degree, thus unlikely to trigger. If at all, then in transitions from shallow to deep snow. These danger zones are not visible to the naked eye. In higher exposed ones there are small, older snowdrift accumulations. Due to solar radiation and daytime warming the snowpack often forfeits firmness during the day.

**Weather**

Nocturnal hours: skies will be variably cloudy to heavily overcast, and mild. Sunday: clouds and fog with slight precipitation. Snowfall level will descend from 2000 m to 1500 m. In the afternoon, dry and clouds dispersing. At 2000 m: from +1 to -2 degrees. Strong W/NW winds.

**Outlook**

On Monday, lots of sunshine, little cloud. Rising temperatures. The NW winds will slacken off. At high altitudes, fresh snowdrifts require caution. Danger of wet-snow avalanches will recede as temperatures drop.

**Avalanche problems**



**Danger ratings**



**Expositions**



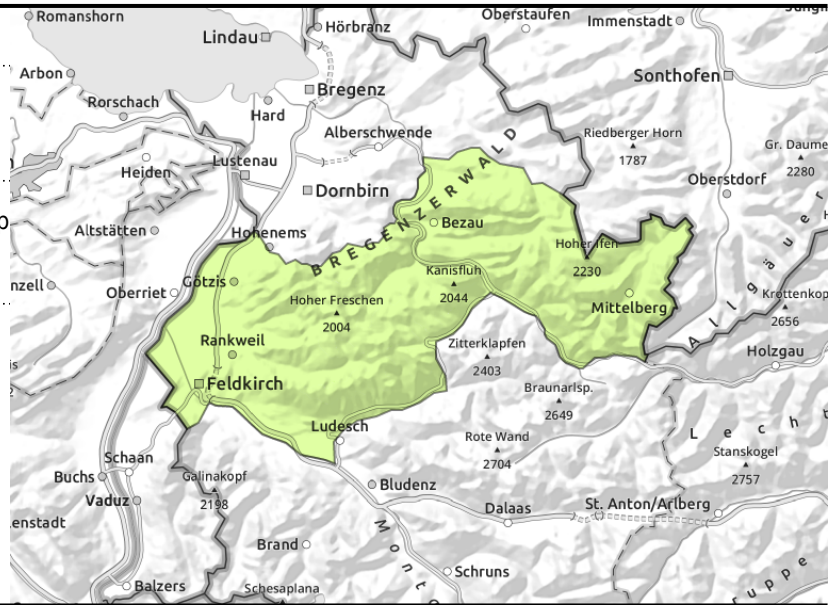
**Allgäuer Alpen, Bregenzerwaldgebirge**



weak layers on extremely steep slopes



reduced nocturnal longwave outgoing radiation and rain impact



**Mostly favourable conditions despite reduced nocturnal outgoing radiation**

Low avalanche danger in the morning. Danger zones for dry snow avalanches mostly in steep shady terrain, caution urged in transtions from shallow to deep snow, e.g. at entries into gullies and bowls. Due to higher temperatures and solar radiation, small-to-medium, in isolated cases also large-sized wet-snow and glide-snow avalanches are possible on very steep sunny slopes during the course of the day.

**Snowpack structure**

The snowpack is generally well consolidated and stable, despite reduced nocturnal outgoing radiation. On shady slopes there are weak layers in places. At high altitudes in exposed zones, fresh, small snowdrifts are apparent. Due to reduced nocturnal radiation and in zones where there is rain impact, the snowpack loses its firmness during the day.

**Weather**

Nocturnal hours: skies will be variably cloudy to heavily overcast, and mild. Sunday: clouds and fog with slight precipitation. Snowfall level will descend from 2000 m to 1500 m. In the afternoon, dry and clouds dispersing. At 2000 m: from +1 to -2 degrees. Strong W/NW winds.

**Outlook**

On Monday, lots of sunshine, little cloud. Rising temperatures. The NW winds will slacken off. At high altitudes, fresh snowdrifts require caution. Danger of wet-snow avalanches will recede as temperatures drop.

**Avalanche problems**



**Danger ratings**



**Expositions**



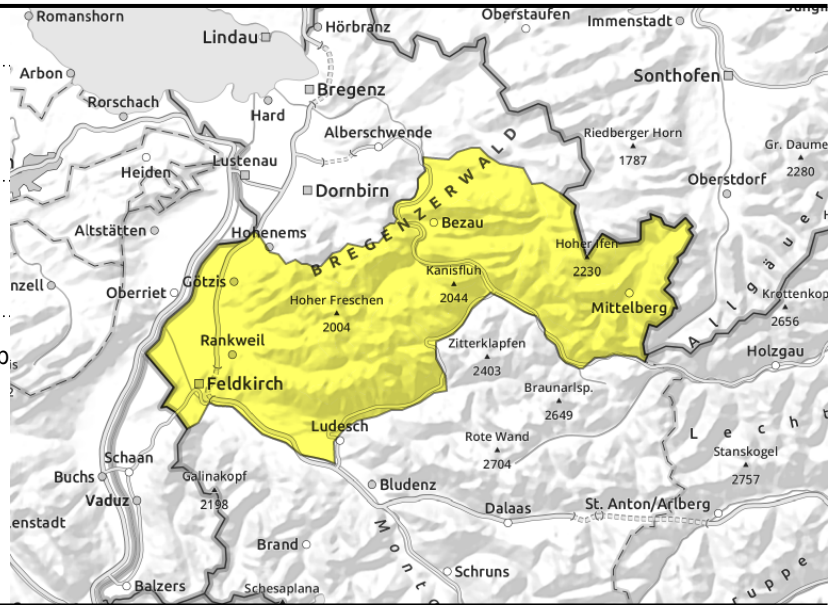
**Allgäuer Alpen, Bregenzerwaldgebirge**



reduced nocturnal longwave outgoing radiation and rain impact



weak layers on extremely steep slopes



**Mostly favourable conditions despite reduced nocturnal outgoing radiation**

Low avalanche danger in the morning. Danger zones for dry snow avalanches mostly in steep shady terrain, caution urged in transtions from shallow to deep snow, e.g. at entries into gullies and bowls. Due to higher temperatures and solar radiation, small-to-medium, in isolated cases also large-sized wet-snow and glide-snow avalanches are possible on very steep sunny slopes during the course of the day.

**Snowpack structure**

The snowpack is generally well consolidated and stable, despite reduced nocturnal outgoing radiation. On shady slopes there are weak layers in places. At high altitudes in exposed zones, fresh, small snowdrifts are apparent. Due to reduced nocturnal radiation and in zones where there is rain impact, the snowpack loses its firmness during the day.

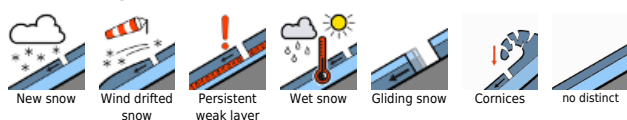
**Weather**

Nocturnal hours: skies will be variably cloudy to heavily overcast, and mild. Sunday: clouds and fog with slight precipitation. Snowfall level will descend from 2000 m to 1500 m. In the afternoon, dry and clouds dispersing. At 2000 m: from +1 to -2 degrees. Strong W/NW winds.

**Outlook**

On Monday, lots of sunshine, little cloud. Rising temperatures. The NW winds will slacken off. At high altitudes, fresh snowdrifts require caution. Danger of wet-snow avalanches will recede as temperatures drop.

**Avalanche problems**



**Danger ratings**



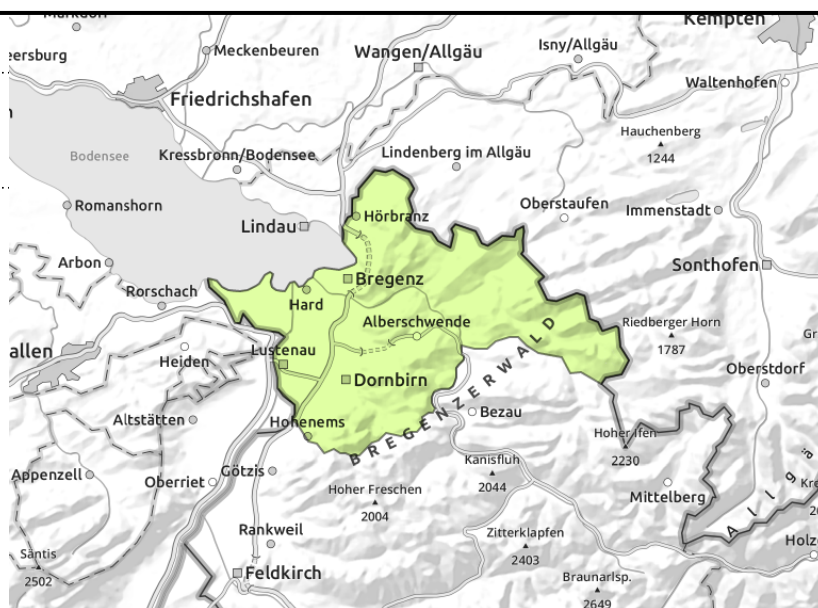
**Expositions**



## Voralpenbereich



small slides and isolated glide-snow avalanches



## Not much snow on the ground, mostly low danger

Avalanche danger is mostly low. During the course of the day, small slides and wet-snow avalanches can trigger. On smooth, steep grass-covered slopes and in sparsely wooded zones, isolated small glide-snow avalanches are possible. Glide cracks are indicators of imminent danger.

### Snowpack structure

The shallow snowpack has settled well and is stable. Solar radiation and daytime warming moisten the snowpack and lead to a loss of firmness in the snowpack. On sunny slopes, the ground is becoming bare of snow to an increasing degree.

### Weather

Nocturnal hours: skies will be variably cloudy to heavily overcast, and mild. Sunday: clouds and fog with slight precipitation. Snowfall level will descend from 2000 m to 1500 m. In the afternoon, dry and clouds dispersing. At 2000 m: from +1 to -2 degrees. Strong W/NW winds.

### Outlook

On Monday, lots of sunshine, little cloud. Rising temperatures. The NW winds will slacken off. At high altitudes, fresh snowdrifts require caution. Danger of wet-snow avalanches will recede as temperatures drop.

Translated by Jeffrey McCabe, [www.creativtrans.com](http://www.creativtrans.com)

### Avalanche problems



### Danger ratings



### Expositions

