

Predominantly favourable conditions - caution urged on shady steep slopes



2000 m Lechquellengebirge, Lechtaler Alpen, Verwall, Rätikon West, Rätikon Ost, Silvretta



Allgauer Alpen, Bregenzerwaldgebirge, Voralpenbereich



Avalanche problems



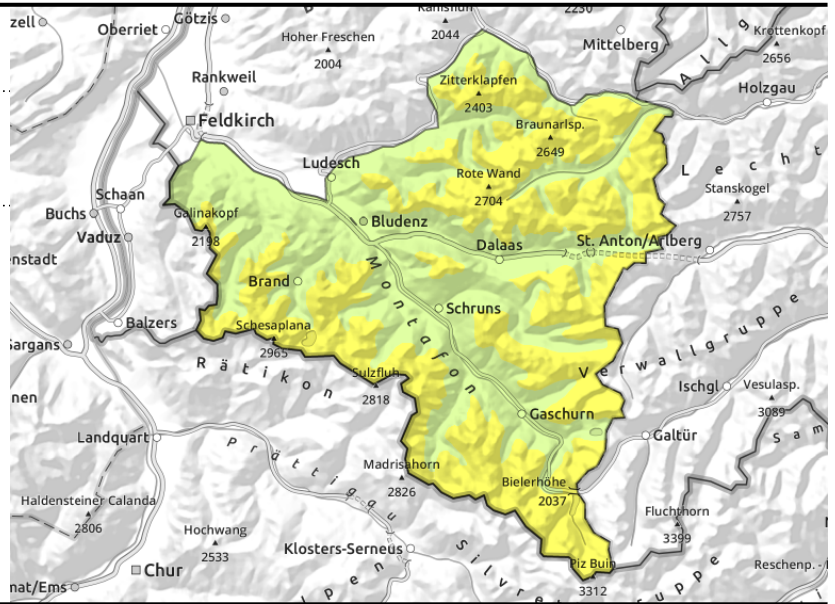
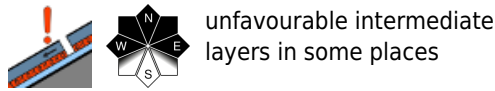
Danger ratings



Expositions



Lechquellengebirge, Lechtaler Alpen, Verwall, Rätikon West, Rätikon Ost, Silvretta



Persistent weak layer esp. on shady slopes

Avalanche prone locations for dry-snow avalanches above 2000 m on shady slopes, particularly in transitions from shallow to deep snow, e.g. at entries into gullies and bowls. Triggerings are possible especially by large additional loading. Small drifts in high-altitude exposed zones should be avoided, esp. on shady slopes. A prudent route selection is recommended.

Snowpack structure

In the upper and mid-parts of the snowpack are expansively metamorphosed (faceted) layers, mostly blanketed to a sufficient degree, thus unlikely to trigger. If at all, then in transitions from shallow to deep snow. These danger zones are not visible to the naked eye. In higher exposed ones there are small, older snowdrift accumulations. On very steep sunny slopes at low altitudes there is a crust on the surface in early morning. Otherwise the snowpack is often powdery.

Weather

Nocturnal hours: mostly cloudy skies but it will remain dry. Friday: variably cloudy to heavily overcast, only little sunshine. Slight precipitation is possible, snow above 1800 m. At 2000 m: 0 to +2 degrees. Moderate to brisk NW winds.

Outlook

Saturday will be quite sunny and very mild. Strong NW winds at high altitude, leading to fresh snowdrift accumulations being generated. Risk of wet-snow avalanches will rise again.

Avalanche problems



Danger ratings



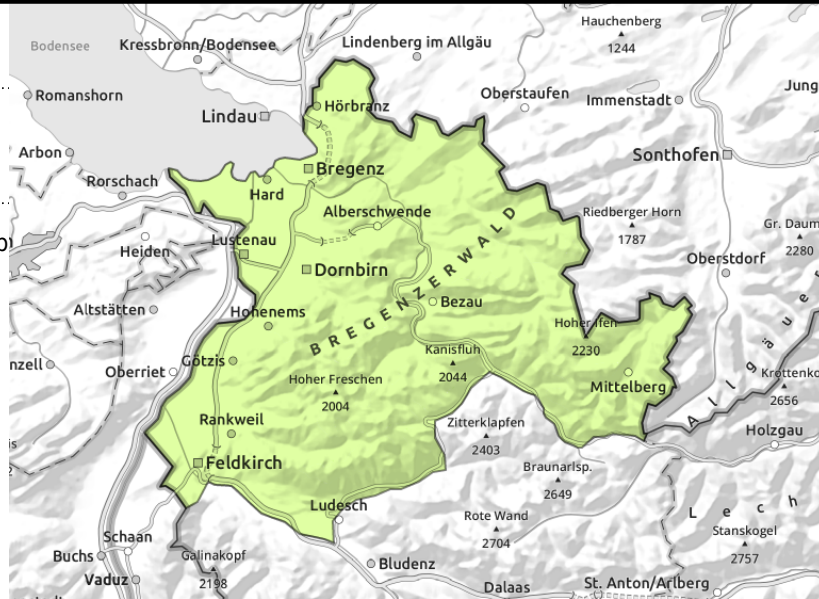
Expositions



Allgäuer Alpen, Bregenzerwaldgebirge, Voralpenbereich



weak layers on extremely steep slopes



Mostly favourable conditions

Avalanche danger is mostly low. Danger zones occur in steep shady terrain. Transitions from shallow to deep snow require caution, e.g. at entries into gullies and bowls. Due to higher temperatures and solar radiation, small-to-medium, in isolated cases also large-sized wet-snow and glide-snow avalanches are possible on very steep sunny slopes during the course of the day.

Snowpack structure

The snowpack is generally well consolidated and stable. On shady slopes there are weak layers in places. At high altitudes in exposed zones, fresh, small snowdrifts are apparent. On very steep sunny slopes and at low altitudes there is a melt-freeze crust capable of bearing loads in the morning hours. Elsewhere the snowpack surface is still powdery, esp. on shady slopes.

Weather

Nocturnal hours: mostly cloudy skies but it will remain dry. Friday: variably cloudy to heavily overcast, only little sunshine. Slight precipitation is possible, snow above 1800 m. At 2000 m: 0 to +2 degrees. Moderate to brisk NW winds.

Outlook

Saturday will be quite sunny and very mild. Strong NW winds at high altitude, leading to fresh snowdrift accumulations being generated. Risk of wet-snow avalanches will rise again.

Translated by Jeffrey McCabe, www.creativtrans.com

Avalanche problems



Danger ratings



Expositions

