

Frequently favourable conditions - slight daytime rise in avalanche danger: caution

	2000 m	Lechquellengebirge, Lechtaler Alpen, Verwall, Rätikon West, Rätikon Ost, Silvretta	
		Voralpenbereich	
	2000 m	Allgäuer Alpen, Bregenzerwaldgebirge	

Avalanche problems

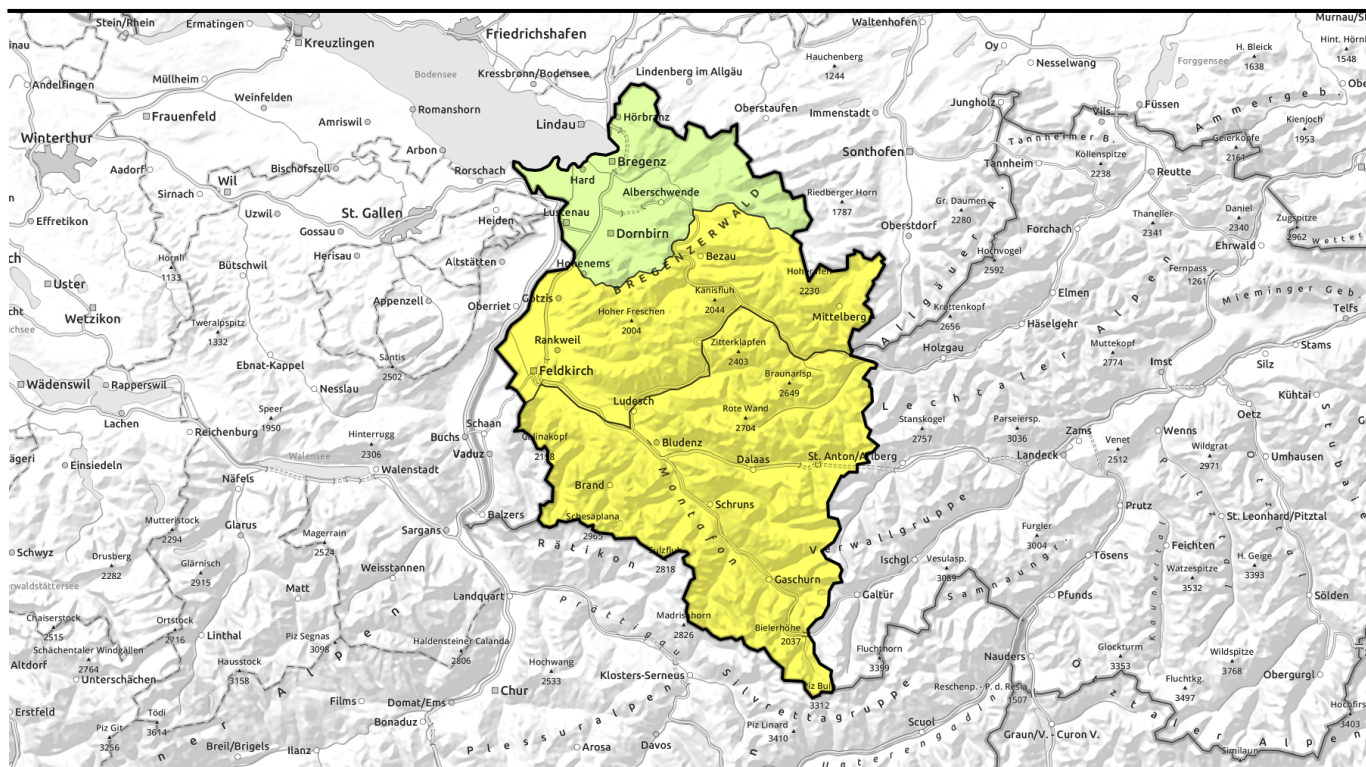


Danger ratings



Expositions





oft günstige Bedingungen - leichten tageszeitlichen Anstieg der Lawinengefahr beachten

2	Lechtallengebirge, Lechtaler Alpen, Verwall, Rätikon West, Rätikon Ost, Silvretta	
1	Voralpenbereich	
2	Allgäuer Alpen, Bregenzerwaldgebirge	

Avalanche problems



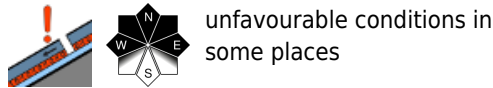
Danger ratings



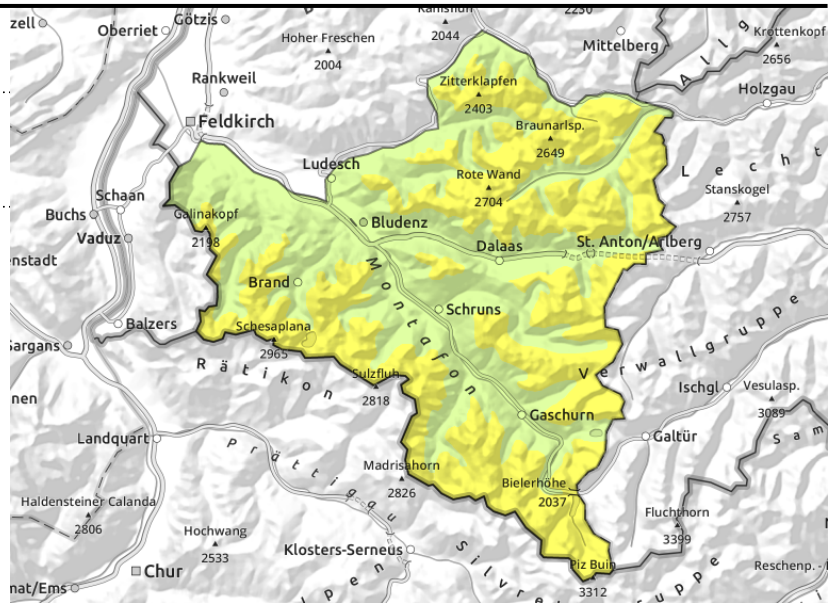
Expositions



Lechquellengebirge, Lechtaler Alpen, Verwall, Rätikon West, Rätikon Ost, Silvretta



unfavourable conditions in some places



Slight rise in avalanche danger during the daytime

Avalanche prone locations for dry-snow avalanches above 2000 m on shady slopes, particularly in transitions from shallow to deep snow, e.g. at entries into gullies and bowls. Triggerings are possible especially by large additional loading. Small drifts in high-altitude exposed zones should be avoided, esp. on shady slopes. A prudent route selection is recommended. Due to solar radiation and daytime warming, small to medium sized wet-snow and glide-snow avalanches are possible during the course of the day on very steep sunny slopes.

Snowpack structure

In the upper and mid-parts of the snowpack are expansively metamorphosed (faceted) layers, mostly blanketed to a sufficient degree, thus unlikely to trigger. If at all, then in transitions from shallow to deep snow. These danger zones are not visible to the naked eye. In higher exposed ones there are small, older snowdrift accumulations. On very steep sunny slopes at low altitudes there is a crust on the surface in early morning. Otherwise the snowpack is often powdery. During the daytime it forfeits its firmness, especially on sunny slopes.

Weather

Nocturnal hours: mostly clear skies, except for a few cirrus clouds. Thursday: in the southern massifs, heavy cloud cover which can hamper the sun. Zero-degree level at midday at about 2200 m, winds intensifying slightly. At 2000 m: +2 degrees. Brisk SW winds, shifting to westerly.

Outlook

Friday will be variably cloudy to heavily overcast, but hardly any precipitation. Danger of dry-snow avalanches will not change. Danger of wet-snow avalanches will diminish.

Avalanche problems



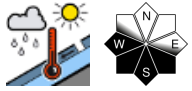
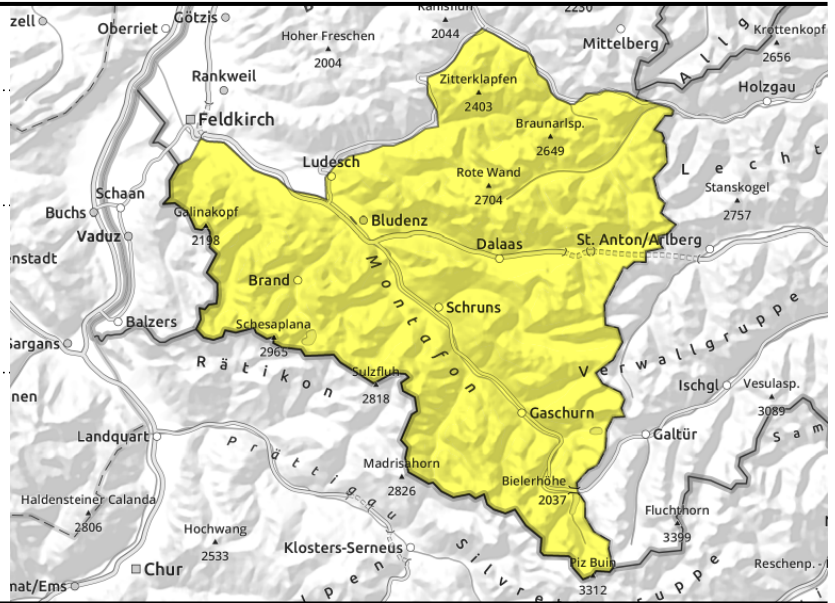
Danger ratings



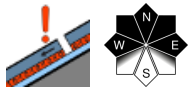
Expositions



Lechquellengebirge, Lechtaler Alpen, Verwall, Rätikon West, Rätikon Ost, Silvretta



due to higher temperatures, solar radiation, wet-snow avalanches esp. on sunny slopes



unfavourable conditions in some places

Slight rise in avalanche danger during the daytime

Avalanche prone locations for dry-snow avalanches above 2000 m on shady slopes, particularly in transitions from shallow to deep snow, e.g. at entries into gullies and bowls. Triggerings are possible especially by large additional loading. Small drifts in high-altitude exposed zones should be avoided, esp. on shady slopes. A prudent route selection is recommended. Due to solar radiation and daytime warming, small to medium sized wet-snow and glide-snow avalanches are possible during the course of the day on very steep sunny slopes.

Snowpack structure

In the upper and mid-parts of the snowpack are expansively metamorphosed (faceted) layers, mostly blanketed to a sufficient degree, thus unlikely to trigger. If at all, then in transitions from shallow to deep snow. These danger zones are not visible to the naked eye. In higher exposed ones there are small, older snowdrift accumulations. On very steep sunny slopes at low altitudes there is a crust on the surface in early morning. Otherwise the snowpack is often powdery. During the daytime it forfeits its firmness, especially on sunny slopes.

Weather

Nocturnal hours: mostly clear skies, except for a few cirrus clouds. Thursday: in the southern massifs, heavy cloud cover which can hamper the sun. Zero-degree level at midday at about 2200 m, winds intensifying slightly. At 2000 m: +2 degrees. Brisk SW winds, shifting to westerly.

Outlook

Friday will be variably cloudy to heavily overcast, but hardly any precipitation. Danger of dry-snow avalanches will not change. Danger of wet-snow avalanches will diminish.

Avalanche problems



Danger ratings



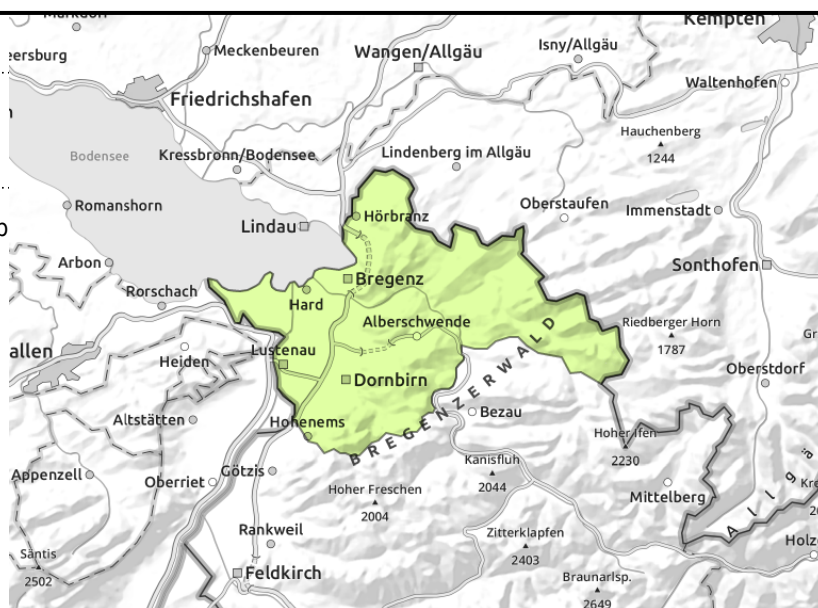
Expositions



Voralpenbereich



weak layers on extremely steep slopes



Favourable conditions, isolated wet-snow avalanches on steep sunny slopes

Avalanche danger is mostly low. Danger zones occur in steep shady terrain. Transitions from shallow to deep snow require caution, e.g. at entries into gullies and bowls. Due to higher temperatures and solar radiation, small-to-medium, in isolated cases also large-sized wet-snow and glide-snow avalanches are possible on very steep sunny slopes during the course of the day.

Snowpack structure

On shady slopes, weak intermediate layers are evident. In higher altitude exposed zones, small snowdrift accumulations are prone to triggering. On very steep sunny slopes and at lower altitudes there is a melt-freeze crust in the early morning hours. Elsewhere the snowpack is still powdery. Through daytime warming and solar radiation the snowpack forfeits its firmness on steep sunny slopes.

Weather

Nocturnal hours: mostly clear skies, except for a few cirrus clouds. Thursday: in the southern massifs, heavy cloud cover which can hamper the sun. Zero-degree level at midday at about 2200 m, winds intensifying slightly. At 2000 m: +2 degrees. Brisk SW winds, shifting to westerly.

Outlook

Friday will be variably cloudy to heavily overcast, but hardly any precipitation. Danger of dry-snow avalanches will not change. Danger of wet-snow avalanches will diminish.

Avalanche problems



Danger ratings



Expositions



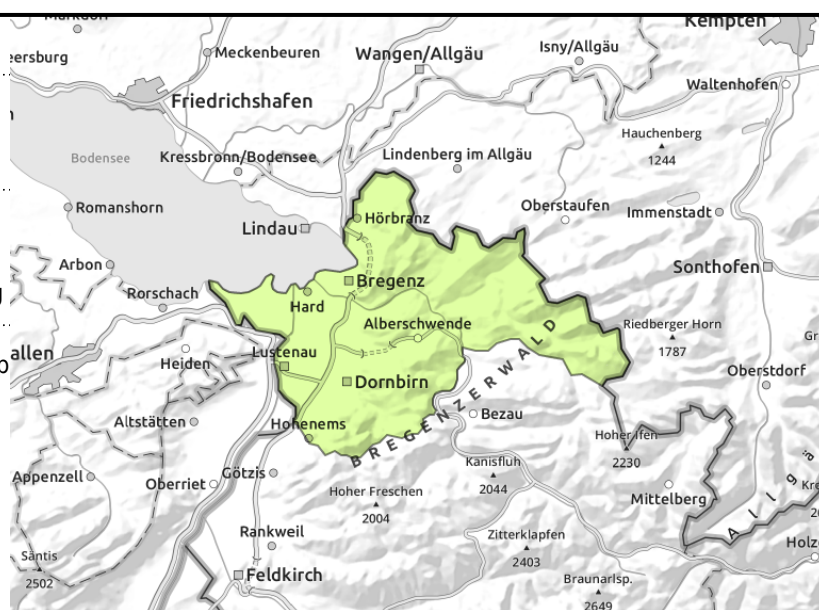
Voralpenbereich



wet-snow and glide-snow avalanches due to solar radiation and daytime warming



weak layers on extremely steep slopes



Favourable conditions, isolated wet-snow avalanches on steep sunny slopes

Avalanche danger is mostly low. Danger zones occur in steep shady terrain. Transitions from shallow to deep snow require caution, e.g. at entries into gullies and bowls. Due to higher temperatures and solar radiation, small-to-medium, in isolated cases also large-sized wet-snow and glide-snow avalanches are possible on very steep sunny slopes during the course of the day.

Snowpack structure

On shady slopes, weak intermediate layers are evident. In higher altitude exposed zones, small snowdrift accumulations are prone to triggering. On very steep sunny slopes and at lower altitudes there is a melt-freeze crust in the early morning hours. Elsewhere the snowpack is still powdery. Through daytime warming and solar radiation the snowpack forfeits its firmness on steep sunny slopes.

Weather

Nocturnal hours: mostly clear skies, except for a few cirrus clouds. Thursday: in the southern massifs, heavy cloud cover which can hamper the sun. Zero-degree level at midday at about 2200 m, winds intensifying slightly. At 2000 m: +2 degrees. Brisk SW winds, shifting to westerly.

Outlook

Friday will be variably cloudy to heavily overcast, but hardly any precipitation. Danger of dry-snow avalanches will not change. Danger of wet-snow avalanches will diminish.

Avalanche problems



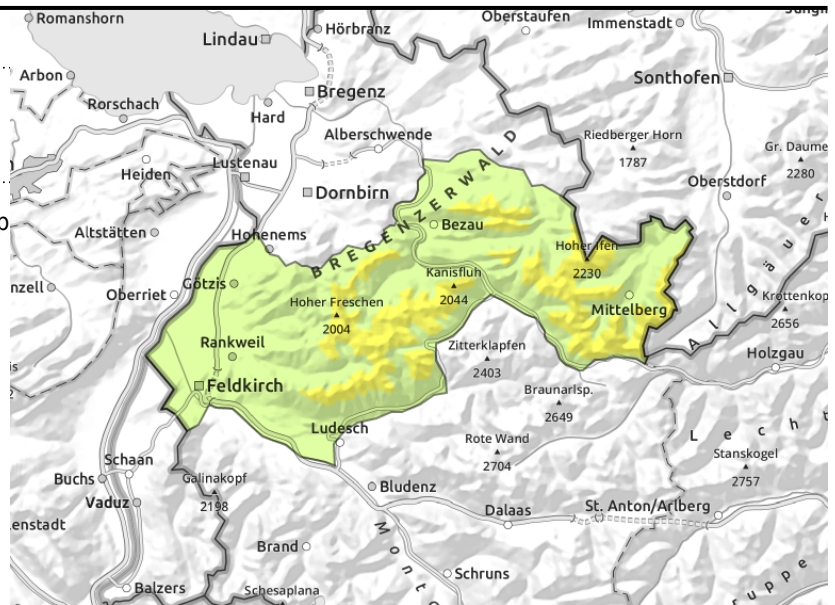
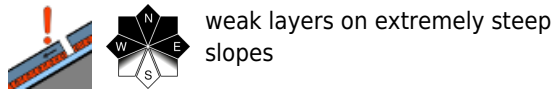
Danger ratings



Expositions



Allgäuer Alpen, Bregenzerwaldgebirge



Conditions frequently favourable, slight rise in avalanche danger during the daytime

Avalanche danger is mostly low, in the afternoon danger is moderate. Danger zones occur in steep shady terrain. Transitions from shallow to deep snow require caution, e.g. at entries into gullies and bowls. Due to higher temperatures and solar radiation, small-to-medium, in isolated cases also large-sized wet-snow and glide-snow avalanches are possible on very steep sunny slopes during the course of the day.

Snowpack structure

On shady slopes, weak intermediate layers are evident. In higher altitude exposed zones, small snowdrift accumulations are prone to triggering. On very steep sunny slopes and at lower altitudes there is a melt-freeze crust in the early morning hours. Elsewhere the snowpack is still powdery. Through daytime warming and solar radiation the snowpack forfeits its firmness on steep sunny slopes.

Weather

Nocturnal hours: mostly clear skies, except for a few cirrus clouds. Thursday: in the southern massifs, heavy cloud cover which can hamper the sun. Zero-degree level at midday at about 2200 m, winds intensifying slightly. At 2000 m: +2 degrees. Brisk SW winds, shifting to westerly.

Outlook

Friday will be variably cloudy to heavily overcast, but hardly any precipitation. Danger of dry-snow avalanches will not change. Danger of wet-snow avalanches will diminish.

Avalanche problems



Danger ratings



Expositions



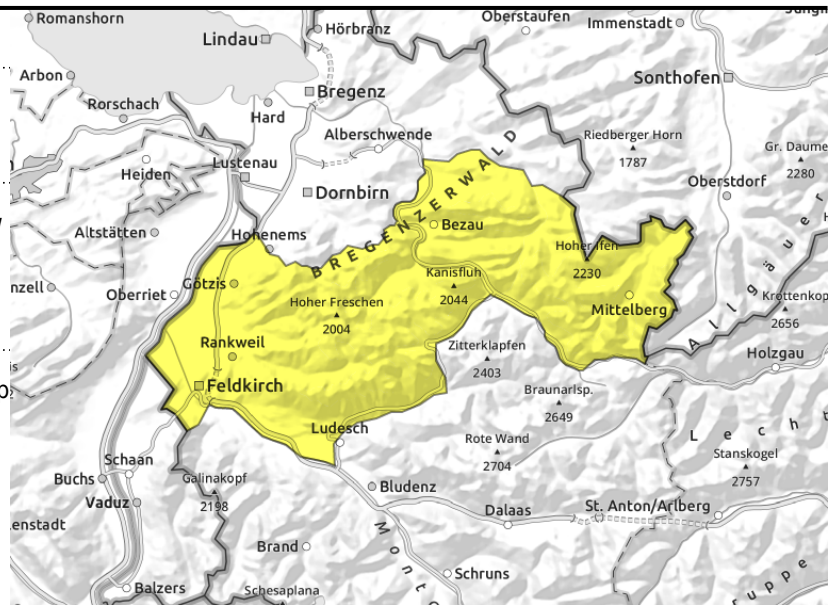
Allgäuer Alpen, Bregenzerwaldgebirge



increasingly frequent wet-snow and glide-snow avalanches on steep sunny slopes during the course of the day



weak layers on extremely steep slopes



Conditions frequently favourable, slight rise in avalanche danger during the daytime

Avalanche danger is mostly low, in the afternoon danger is moderate. Danger zones occur in steep shady terrain. Transitions from shallow to deep snow require caution, e.g. at entries into gullies and bowls. Due to higher temperatures and solar radiation, small-to-medium, in isolated cases also large-sized wet-snow and glide-snow avalanches are possible on very steep sunny slopes during the course of the day.

Snowpack structure

On shady slopes, weak intermediate layers are evident. In higher altitude exposed zones, small snowdrift accumulations are prone to triggering. On very steep sunny slopes and at lower altitudes there is a melt-freeze crust in the early morning hours. Elsewhere the snowpack is still powdery. Through daytime warming and solar radiation the snowpack forfeits its firmness on steep sunny slopes.

Weather

Nocturnal hours: mostly clear skies, except for a few cirrus clouds. Thursday: in the southern massifs, heavy cloud cover which can hamper the sun. Zero-degree level at midday at about 2200 m, winds intensifying slightly. At 2000 m: +2 degrees. Brisk SW winds, shifting to westerly.

Outlook

Friday will be variably cloudy to heavily overcast, but hardly any precipitation. Danger of dry-snow avalanches will not change. Danger of wet-snow avalanches will diminish.

Translated by Jeffrey McCabe, www.creativtrans.com

Avalanche problems



Danger ratings



Expositions

