

UPDATE: daytime rise in avalanche danger, caution urged

	2000 m Lechquellengebirge, Lechtaler Alpen, Verwall, Rätikon West, Rätikon Ost, Silvretta	
	Voralpenbereich	
	1800 m Allgäuer Alpen, Bregenzerwaldgebirge	

Avalanche problems

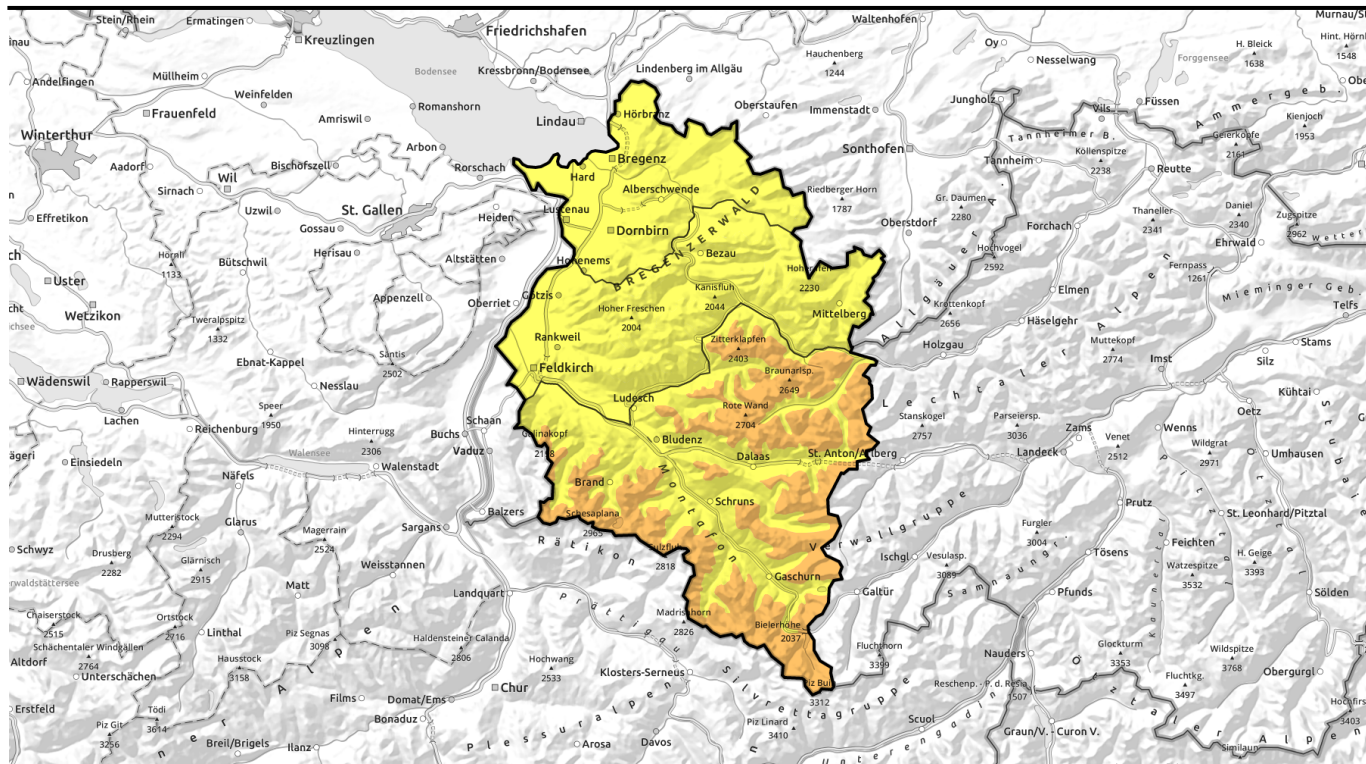


Danger ratings



Expositions

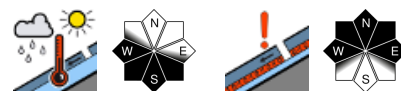




Aktualisierung: tageszeitlichen Anstieg der Lawinengefahr beachten



Lechtalengebirge, Lechtaler Alpen, Verwall, Rätikon West, Rätikon Ost, Silvretta



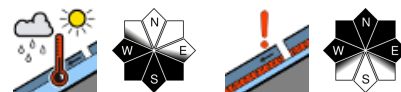
1200 m



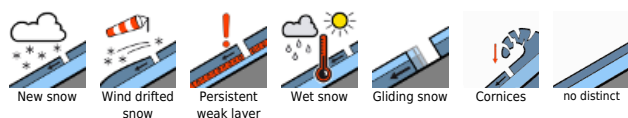
Voralpenbereich



Allgäuer Alpen, Bregenzwaldgebirge



Avalanche problems



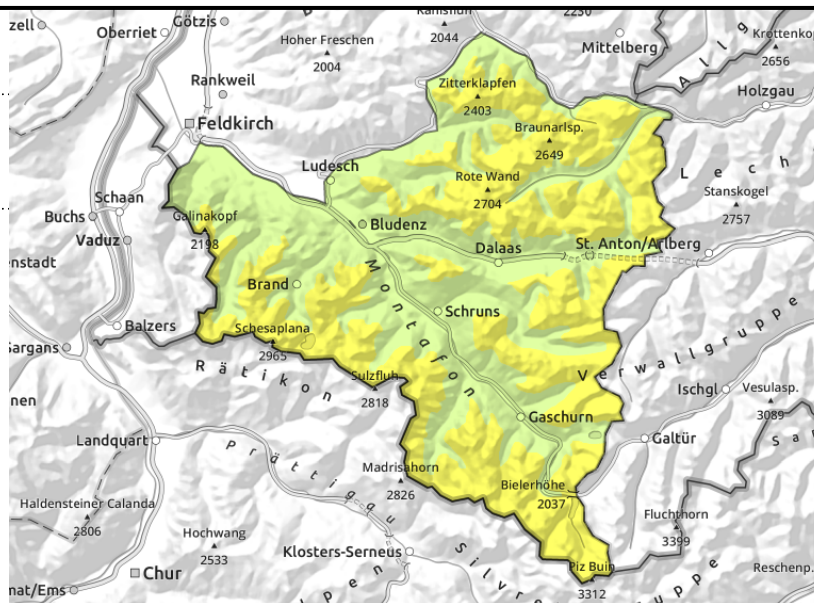
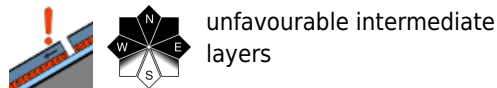
Danger ratings



Expositions



Lechquellengebirge, Lechtaler Alpen, Verwall, Rätikon West, Rätikon Ost, Silvretta



Wet-snow avalanches on steep sunny slopes during the daytime

Avalanche danger is mostly moderate, in the afternoon in some places it is considerable. Danger zones occur above 2000 m mostly in steep shady terrain. Transitions from shallow to deep snow require caution, e.g. at entries into gullies and bowls. Avalanches can be triggered by large additional loading. Fresh small snowdrift accumulations should be avoided in high-altitude exposed terrain, esp. on shady slopes. A cautious route selection is recommended. Due to higher temperatures and solar radiation, small-to-medium, in isolated cases also large-sized wet-snow and glide-snow avalanches are possible on very steep sunny slopes during the course of the day.

Snowpack structure

In the upper part of the snowpack there are expansively metamorphosed weak layers. More deeply embedded layers are usually adequately blanketed, seldom triggerable. Most triggerable are transitions from shallow to deep snow, unfortunately not visible to the naked eye. In higher altitude exposed zones, small snowdrift accumulations are prone to triggering. On very steep sunny slopes and at lower altitudes there is a melt-freeze crust in the early morning hours. Elsewhere the snowpack is still powdery. At intermediate altitudes on shady slopes more than anywhere else, surface hoar can be found. Through daytime warming and solar radiation the snowpack forfeits its firmness on steep sunny slopes. Naturally triggered small-to-medium wet-snow and glide-snow avalanches have been observed, also some large-sized releases.

Weather

Tuesday: cloudless skies, light winds, mild. Outstanding visibility. Zero-degree level at 3000 m. At 2000 m: 2 to 7 degrees. Light easterly winds, shifting to southerly.

Outlook

Persistently sunny, very mild. Danger of dry-snow avalanches will gradually decrease. Due to higher temperatures and solar radiation, wet-snow and glide-snow avalanche activity will increase during the course of each day, particularly on very steep sunny slopes.

Avalanche problems



Danger ratings



Expositions



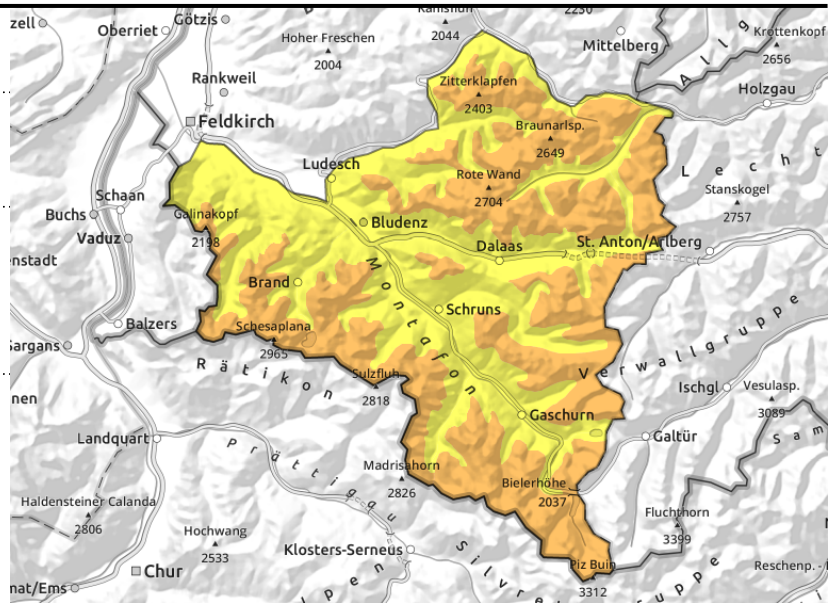
Lechquellengebirge, Lechtaler Alpen, Verwall, Rätikon West, Rätikon Ost, Silvretta



due to higher temperatures, solar radiation, wet-snow avalanches esp. on sunny slopes



unfavourable intermediate layers



Wet-snow avalanches on steep sunny slopes during the daytime

Avalanche danger is mostly moderate, in the afternoon in some places it is considerable. Danger zones occur above 2000 m mostly in steep shady terrain. Transitions from shallow to deep snow require caution, e.g. at entries into gullies and bowls. Avalanches can be triggered by large additional loading. Fresh small snowdrift accumulations should be avoided in high-altitude exposed terrain, esp. on shady slopes. A cautious route selection is recommended. Due to higher temperatures and solar radiation, small-to-medium, in isolated cases also large-sized wet-snow and glide-snow avalanches are possible on very steep sunny slopes during the course of the day.

Snowpack structure

In the upper part of the snowpack there are expansively metamorphosed weak layers. More deeply embedded layers are usually adequately blanketed, seldom triggerable. Most triggerable are transitions from shallow to deep snow, unfortunately not visible to the naked eye. In higher altitude exposed zones, small snowdrift accumulations are prone to triggering. On very steep sunny slopes and at lower altitudes there is a melt-freeze crust in the early morning hours. Elsewhere the snowpack is still powdery. At intermediate altitudes on shady slopes more than anywhere else, surface hoar can be found. Through daytime warming and solar radiation the snowpack forfeits its firmness on steep sunny slopes. Naturally triggered small-to-medium wet-snow and glide-snow avalanches have been observed, also some large-sized releases.

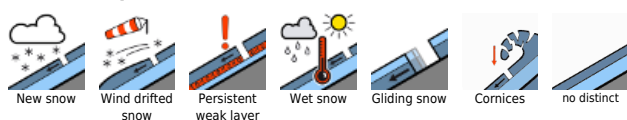
Weather

Tuesday: cloudless skies, light winds, mild. Outstanding visibility. Zero-degree level at 3000 m. At 2000 m: 2 to 7 degrees. Light easterly winds, shifting to southerly.

Outlook

Persistently sunny, very mild. Danger of dry-snow avalanches will gradually decrease. Due to higher temperatures and solar radiation, wet-snow and glide-snow avalanche activity will increase during the course of each day, particularly on very steep sunny slopes.

Avalanche problems



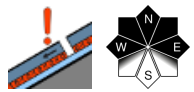
Danger ratings



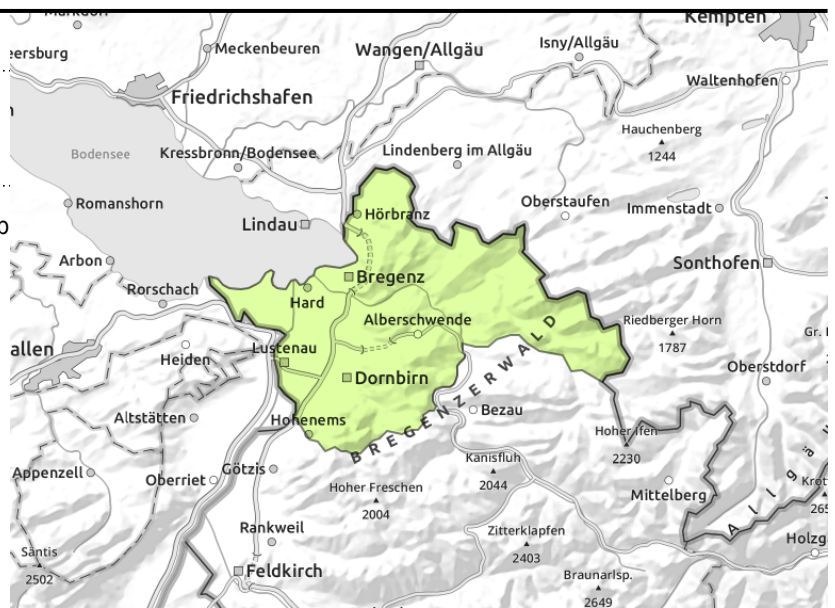
Expositions



Voralpenbereich



weak layers on extremely steep slopes



Wet-snow avalanches on steep sunny slopes during the daytime

Avalanche danger is mostly low, in the afternoon danger is moderate. Danger zones occur in steep shady terrain. Transitions from shallow to deep snow require caution, e.g. at entries into gullies and bowls. Due to higher temperatures and solar radiation, small-to-medium, in isolated cases also large-sized wet-snow and glide-snow avalanches are possible on very steep sunny slopes during the course of the day.

Snowpack structure

On shady slopes, weak intermediate layers are evident. In higher altitude exposed zones, small snowdrift accumulations are prone to triggering. On very steep sunny slopes and at lower altitudes there is a melt-freeze crust in the early morning hours. Elsewhere the snowpack is still powdery. At intermediate altitudes on shady slopes more than anywhere else, surface hoar can be found. Through daytime warming and solar radiation the snowpack forfeits its firmness on steep sunny slopes.

Weather

Tuesday: cloudless skies, light winds, mild. Outstanding visibility. Zero-degree level at 3000 m. At 2000 m: 2 to 7 degrees. Light easterly winds, shifting to southerly.

Outlook

Persistently sunny, very mild. Danger of dry-snow avalanches will gradually decrease. Due to higher temperatures and solar radiation, wet-snow and glide-snow avalanche activity will increase during the course of each day, particularly on very steep sunny slopes.

Avalanche problems



Danger ratings



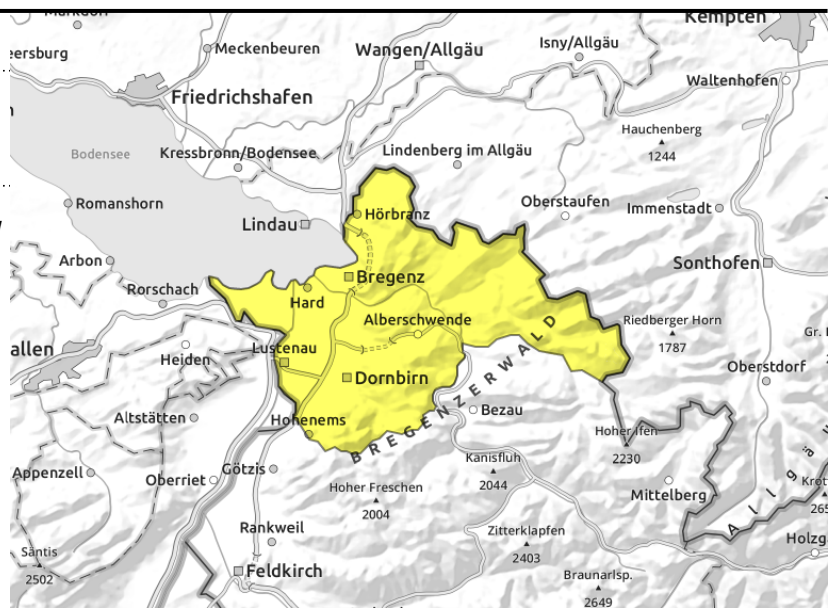
Expositions



Voralpenbereich



increasingly frequent wet-snow and glide-snow avalanches



Wet-snow avalanches on steep sunny slopes during the daytime

Avalanche danger is mostly low, in the afternoon danger is moderate. Danger zones occur in steep shady terrain. Transitions from shallow to deep snow require caution, e.g. at entries into gullies and bowls. Due to higher temperatures and solar radiation, small-to-medium, in isolated cases also large-sized wet-snow and glide-snow avalanches are possible on very steep sunny slopes during the course of the day.

Snowpack structure

On shady slopes, weak intermediate layers are evident. In higher altitude exposed zones, small snowdrift accumulations are prone to triggering. On very steep sunny slopes and at lower altitudes there is a melt-freeze crust in the early morning hours. Elsewhere the snowpack is still powdery. At intermediate altitudes on shady slopes more than anywhere else, surface hoar can be found. Through daytime warming and solar radiation the snowpack forfeits its firmness on steep sunny slopes.

Weather

Tuesday: cloudless skies, light winds, mild. Outstanding visibility. Zero-degree level at 3000 m. At 2000 m: 2 to 7 degrees. Light easterly winds, shifting to southerly.

Outlook

Persistently sunny, very mild. Danger of dry-snow avalanches will gradually decrease. Due to higher temperatures and solar radiation, wet-snow and glide-snow avalanche activity will increase during the course of each day, particularly on very steep sunny slopes.

Avalanche problems



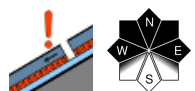
Danger ratings



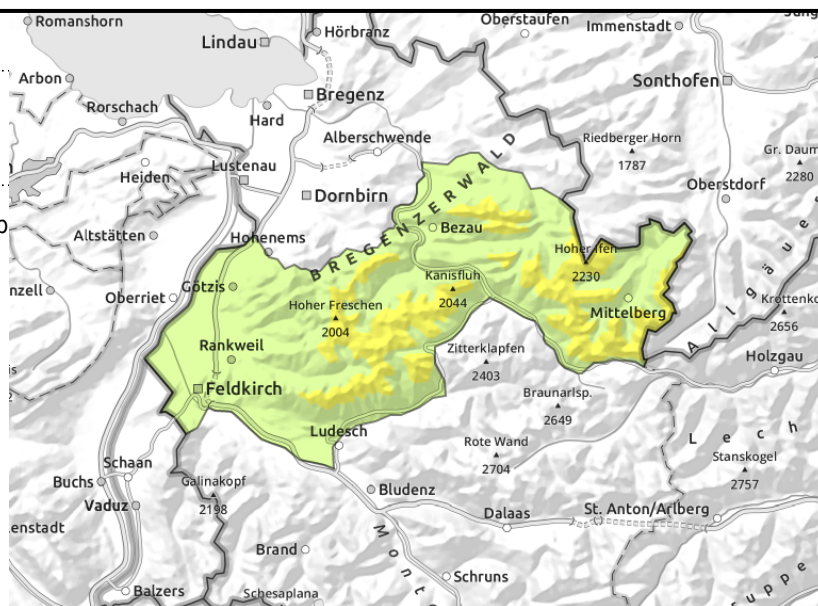
Expositions



Allgäuer Alpen, Bregenzerwaldgebirge



weak layers on extremely steep slopes



Wet-snow avalanches on steep sunny slopes during the daytime

Avalanche danger is mostly low, in the afternoon danger is moderate. Danger zones occur in steep shady terrain. Transitions from shallow to deep snow require caution, e.g. at entries into gullies and bowls. Due to higher temperatures and solar radiation, small-to-medium, in isolated cases also large-sized wet-snow and glide-snow avalanches are possible on very steep sunny slopes during the course of the day.

Snowpack structure

On shady slopes, weak intermediate layers are evident. In higher altitude exposed zones, small snowdrift accumulations are prone to triggering. On very steep sunny slopes and at lower altitudes there is a melt-freeze crust in the early morning hours. Elsewhere the snowpack is still powdery. At intermediate altitudes on shady slopes more than anywhere else, surface hoar can be found. Through daytime warming and solar radiation the snowpack forfeits its firmness on steep sunny slopes.

Weather

Tuesday: cloudless skies, light winds, mild. Outstanding visibility. Zero-degree level at 3000 m. At 2000 m: 2 to 7 degrees. Light easterly winds, shifting to southerly.

Outlook

Persistently sunny, very mild. Danger of dry-snow avalanches will gradually decrease. Due to higher temperatures and solar radiation, wet-snow and glide-snow avalanche activity will increase during the course of each day, particularly on very steep sunny slopes.

Avalanche problems



Danger ratings



Expositions



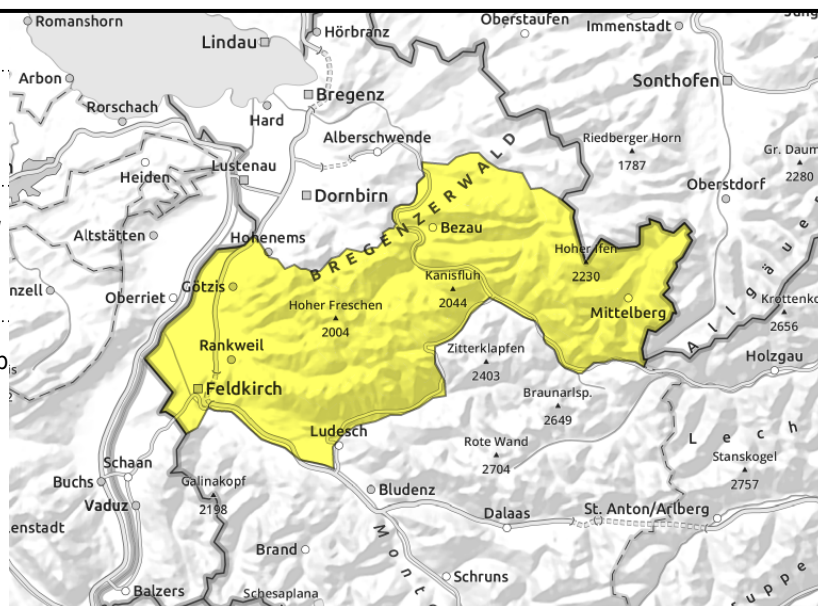
Allgäuer Alpen, Bregenzerwaldgebirge



increasingly frequent wet-snow and glide-snow avalanches on steep sunny slopes



weak layers on extremely steep slopes



Wet-snow avalanches on steep sunny slopes during the daytime

Avalanche danger is mostly low, in the afternoon danger is moderate. Danger zones occur in steep shady terrain. Transitions from shallow to deep snow require caution, e.g. at entries into gullies and bowls. Due to higher temperatures and solar radiation, small-to-medium, in isolated cases also large-sized wet-snow and glide-snow avalanches are possible on very steep sunny slopes during the course of the day.

Snowpack structure

On shady slopes, weak intermediate layers are evident. In higher altitude exposed zones, small snowdrift accumulations are prone to triggering. On very steep sunny slopes and at lower altitudes there is a melt-freeze crust in the early morning hours. Elsewhere the snowpack is still powdery. At intermediate altitudes on shady slopes more than anywhere else, surface hoar can be found. Through daytime warming and solar radiation the snowpack forfeits its firmness on steep sunny slopes.

Weather

Tuesday: cloudless skies, light winds, mild. Outstanding visibility. Zero-degree level at 3000 m. At 2000 m: 2 to 7 degrees. Light easterly winds, shifting to southerly.

Outlook

Persistently sunny, very mild. Danger of dry-snow avalanches will gradually decrease. Due to higher temperatures and solar radiation, wet-snow and glide-snow avalanche activity will increase during the course of each day, particularly on very steep sunny slopes.

Translated by Jeffrey McCabe, www.creativtrans.com

Avalanche problems



Danger ratings



Expositions

