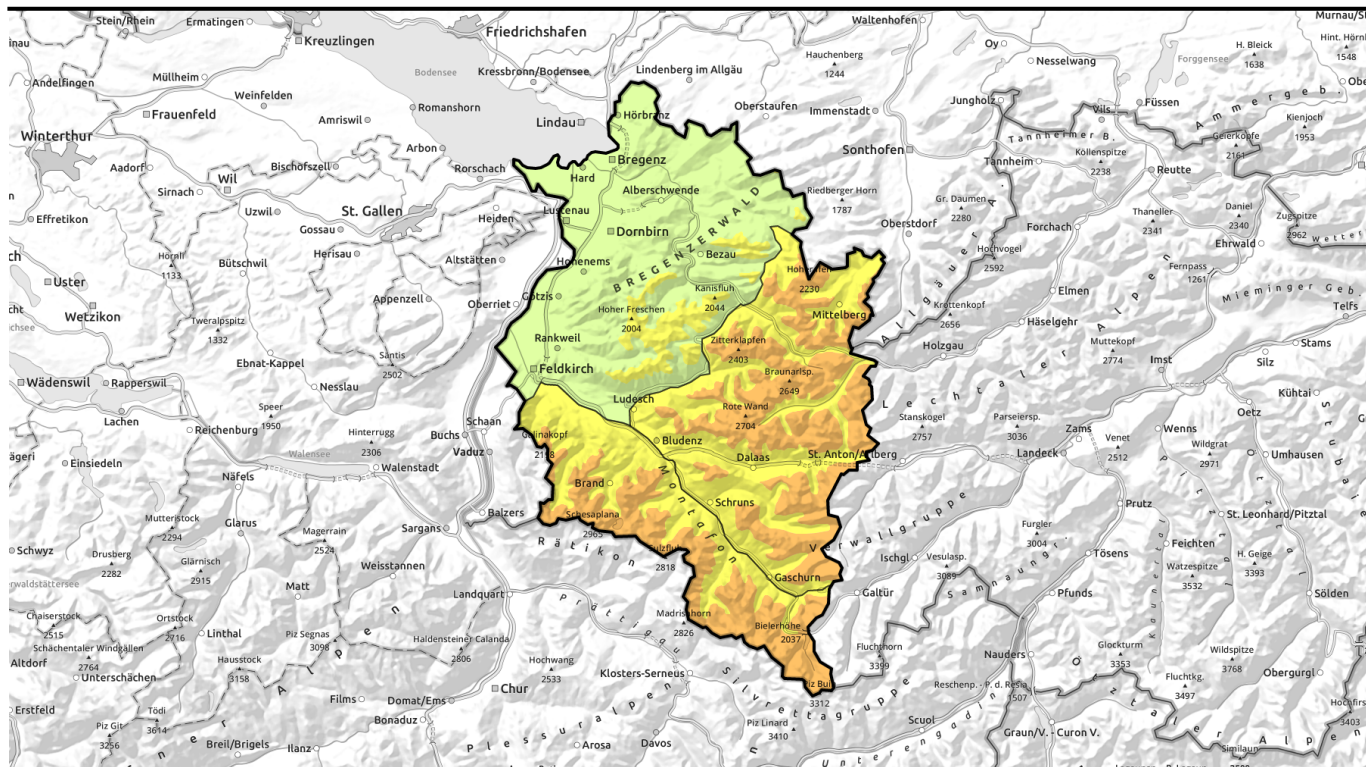


Avalanche report for Monday, 06.02.2023



Attention winter sports enthusiasts: regionally considerable danger at high altitudes

	1800 m	Verwall, Lechquellengebirge, Lechtaler Alpen, Allgäuer Alpen	
	1600 m	Voralpenbereich, Bregenzerwaldgebirge	
	1800 m	Rätikon West, Rätikon Ost, Silvretta	

Avalanche problems



Danger ratings



Expositions



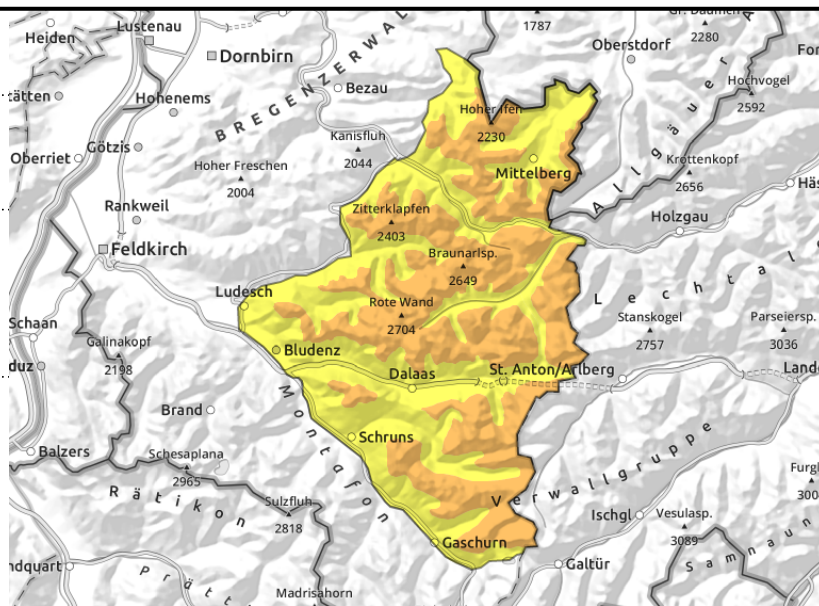
Verwall, Lechquellengebirge, Lechtaler Alpen, Allgäuer Alpen



wind-loaded steep slopes, gullies and bowls, behind abrupt discontinuities in the terrain



unfavourable intermediate layers



Snowpack still prone to triggering at high altitudes

Considerable avalanche danger prevails. Avalanche prone locations occur in wind-loaded steep terrain, behind abrupt discontinuities in the terrain, and in gullies and bowls, Small to medium, in isolated cases also large-sized slab avalanches can be triggered even by minimum additional loading, i.e. the weight of one sole skier. Whumpf noises and glide-cracks in the snowpack are signals of imminent danger. Activities in backcountry terrain demand restraint. On steep, seldom-tracked shady slopes at high altitudes, more deeply embedded layers inside the snowpack can be triggered by large additional loading.

Snowpack structure

Fresh snow and drifts were able to settle at low and intermediate altitudes, and consolidate. With ascending altitude this process requires longer. Fresh snow and snowdrifts often lie deposited atop unfavourable old snowpack surfaces consisting of surface hoar, melt-freeze encrusted or softened layers. Bonding of fresh snow and drifts to these layers and also inside the snowpack itself is frequently poor. At high altitudes on steep shady slopes there are still older unfavourable intermediate layers inside the snowpack which are not visible to the naked eye.

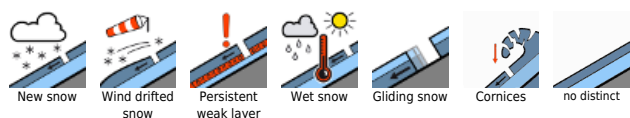
Weather

Nocturnal hours: light snowfall down to low lying areas from heavy cloud cover, in the latter part of the night the snowfall will taper off, clouds will disperse. In the Rhine Valley and on Lake Constance the fog will recede. Monday: sunny and adequate visibility. In the afternoon, clouds will move in from the northeast, a few snow showers will result. Temperatures will drop. At 2000 m: -10 degrees. Moderate N/NE winds.

Outlook

Tuesday will be very sunny. At 2000 m: -7 degrees. Moderate E/NE winds. Avalanche danger will diminish.

Avalanche problems



Danger ratings



Expositions



Avalanche report for Monday, 06.02.2023

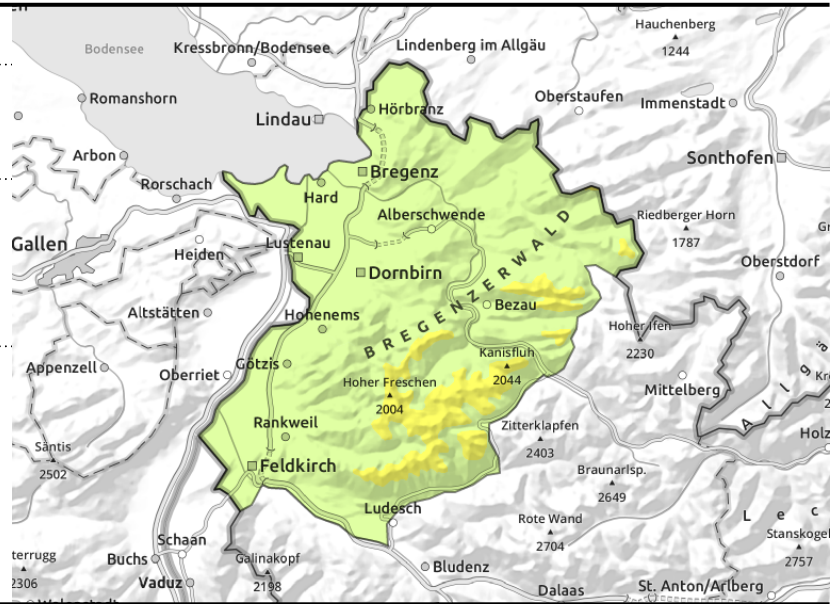
Voralpenbereich, Bregenzerwaldgebirge



wind-loaded steep slopes, gullies and bowls, behind abrupt discontinuities in the terrain



increasingly on steep, smooth grass-covered slopes



Fresh snowdrifts are prone to triggering at high altitudes

Fresh snow and freshly generated snowdrift accumulations are prone to triggering. Exposed ridges and crests are often windblown and bare of snow. Esp. intermediate altitudes evidence surface hoar. One person can trigger small-to-medium avalanches in gullies and bowls and behind abrupt discontinuities in the terrain. In extremely steep and rocky terrain, small to medium sized loose-snow avalanches are possible.

Snowpack structure

The latest batch of fresh snow was able to settle and consolidate at low altitudes. It often blankets trigger-sensitive snowdrift accumulations. Bonding of fresh snow and drifts to the old snowpack and with itself is often poor. Small to medium naturally triggered releases and danger signals confirm how prone to triggering the snowpack is.

Weather

Nocturnal hours: light snowfall down to low lying areas from heavy cloud cover, in the latter part of the night the snowfall will taper off, clouds will disperse. In the Rhine Valley and on Lake Constance the fog will recede. Monday: sunny and adequate visibility. In the afternoon, clouds will move in from the northeast, a few snow showers will result. Temperatures will drop. At 2000 m: -10 degrees. Moderate N/NE winds.

Outlook

Tuesday will be very sunny. At 2000 m: -7 degrees. Moderate E/NE winds. Avalanche danger will diminish.

Avalanche problems



Danger ratings



Expositions



Rätikon West, Rätikon Ost, Silvretta



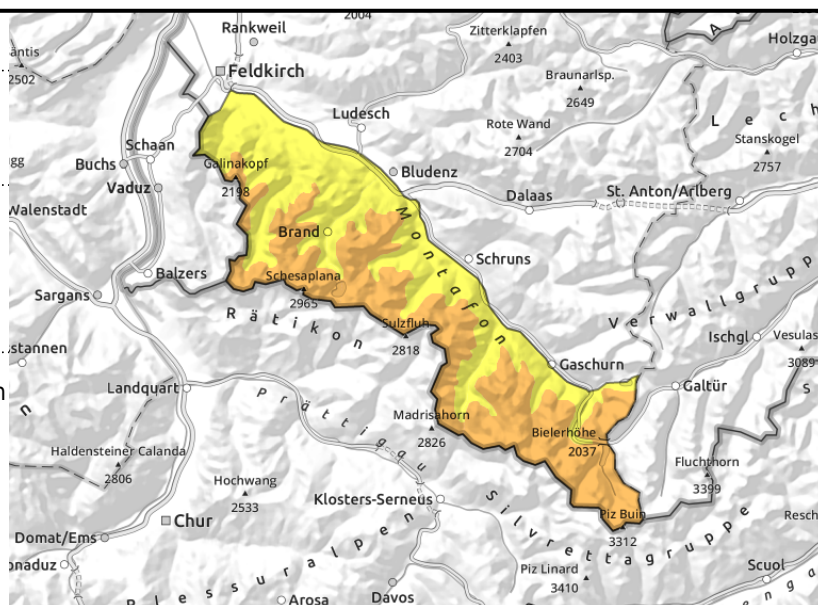
1800 m



>1800m wind-loaded steep slopes, gullies, bowls, behind abrupt discontinuities in the terrain



very steep shady slopes at high altitudes



Still unfavourable conditions at high altitudes

At high altitudes, considerable avalanche danger still prevails. Avalanche prone locations occur in wind-loaded steep terrain, also distant from ridgelines and particularly behind abrupt discontinuities in the terrain, in gullies and bowls. Size and spread of the danger zones increase with ascending altitude. Whumpf noises and glide cracks in the snowpack surface are signals of danger. Also remote triggerings and naturally triggered avalanches are possible. If avalanches fracture down to these layers they can grow to large size.

Snowpack structure

The latest batch of fresh snow was able to settle and consolidate at low altitudes. It often blankets trigger-sensitive snowdrift accumulations. Bonding of fresh snow and drifts to the old snowpack and with itself is often poor. At high altitudes especially on steep shady slopes there are still older unfavourable layers in the snowpack. These places are not visible to the naked eye.

Weather

Nocturnal hours: light snowfall down to low lying areas from heavy cloud cover, in the latter part of the night the snowfall will taper off, clouds will disperse. In the Rhine Valley and on Lake Constance the fog will recede. Monday: sunny and adequate visibility. In the afternoon, clouds will move in from the northeast, a few snow showers will result. Temperatures will drop. At 2000 m: -10 degrees. Moderate N/NE winds.

Outlook

Tuesday will be very sunny. At 2000 m: -7 degrees. Moderate E/NE winds. Avalanche danger will diminish.

Translated by Jeffrey McCabe, www.creativtrans.com

Avalanche problems



Danger ratings



Expositions

