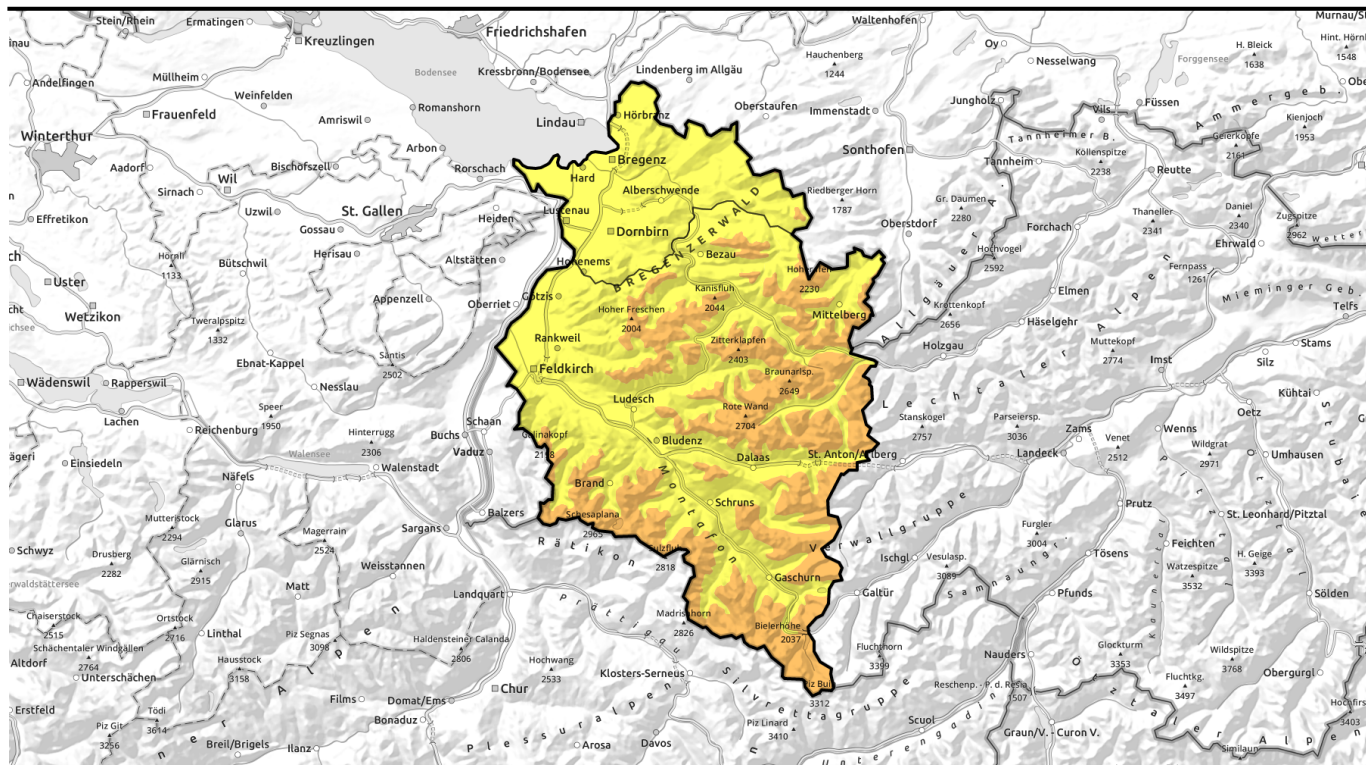


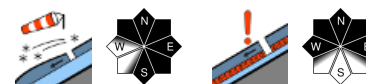
Avalanche report for Friday, 03.02.2023



UPDATE: unfavourable conditions due to fresh snowfall and wind



forestline Rätikon West, Rätikon Ost, Silvretta, Verwall, Lechquellengebirge, Lechtaler Alpen, Allgäuer Alpen, Bregenzerwaldgebirge



forestline Voralpenbereich



Avalanche problems



Danger ratings



Expositions



Rätikon West, Rätikon Ost, Silvretta, Verwall, Lechquellengebirge, Lechtaler Alpen, Allgäuer Alpen, Bregenzerwaldgebirge



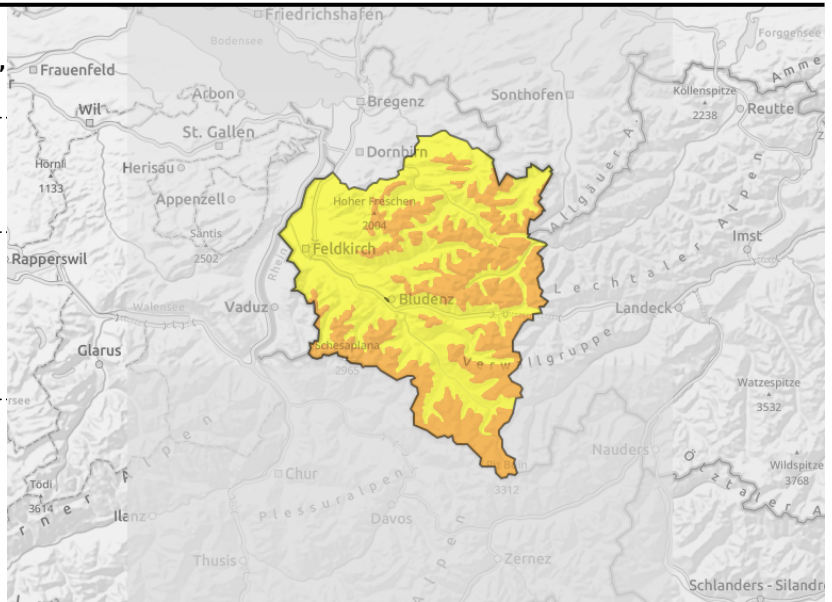
forestline



wind-loaded steep slopes, gullies and bowls, behind abrupt discontinuities in the terrain



esp. on shady high-altitude slopes: often unfavourable intermediate layers



Attention winter sports enthusiasts: fresh snow and fresh snowdrifts are trigger-sensitive

Fresh snowdrift accumulations are highly prone to triggering, and increase in size and spread with ascending altitude. One person can triggered small-to-medium slab avalanches in gullies and bowls, behind abrupt discontinuities in the terrain. Whumpf noises and glide cracks are signals of danger. Also, on steep, seldom-tracked shady slopes at high altitudes, deeper layers can be triggered by large additional loading. Naturally triggered avalanches are possible in rocky or wind-loaded steep terrain: loose-snow and slab releases, particularly with solar radiation.

Snowpack structure

Amid strong-to-stormy NW winds the fresh snow will be transported far-reachingly and more trigger-sensitive snowdrift accumulations will be generated, deposited atop an unfavourable snowpack surface, often with surface hoar, melt-freeze crusts or soft layers. Bonding of fresh snow and drifts to the layers beneath them is moderate to poor. At high altitudes esp. on steep shady slopes, older unfavourable layers are evident. These spots are not visible to the naked eye.

Weather

Friday: conditions will be pleasant. High-altitude clouds will make some sunshine possible in the morning. In the afternoon, clouds will thicken, the light become diffuse. It will remain partly cloudy in the Bregenzerwald mountains and Prealps. In ridgeline zones and pass areas, stormy-strength winds. At 2000 m: -7 to -3 degrees. Strong to stormy NW winds.

Outlook

On Friday night, rainfall/snowfall will set in. The fresh snow will be transported far-reachingly at high altitudes. The snowpack remains prone to triggering, avalanche danger levels may rise further.

Avalanche problems



Danger ratings

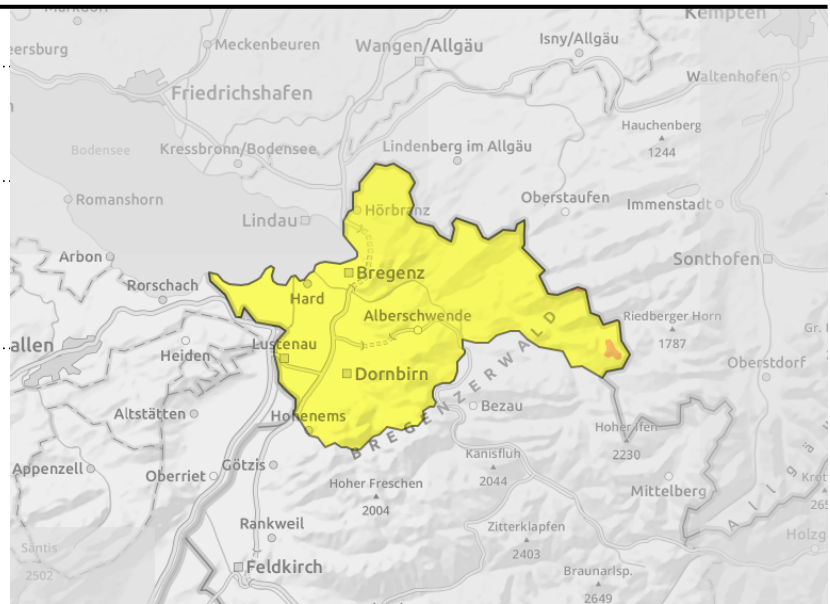
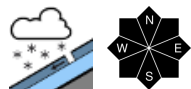
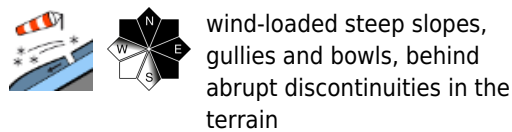


Expositions



Avalanche report for Friday, 03.02.2023

Voralpenbereich



Fresh snowdrifts are prone to triggering

Fresh snow and freshly generated snowdrift accumulations are prone to triggering. Exposed ridges and crests are often windblown and bare of snow. Esp. intermediate altitudes evidence surface hoar. One person can trigger small-to-medium avalanches in gullies and bowls and behind abrupt discontinuities in the terrain. In extremely steep and rocky terrain, small to medium sized loose-snow avalanches are possible.

Snowpack structure

Amid further snowfall and strong W/NW winds, trigger-sensitive snowdrift accumulations are still being generated. Exposed crests and ridges are often windblown and bare of snow. Esp. at intermediate altitudes there is often surface hoar. On south-facing slopes at high altitudes, often a melt-freeze crust and on north-facing slopes in leeward terrain, often soft layers or surface hoar. Bonding of the fresh snow to the old snowpack is often poor.

Weather

Friday: conditions will be pleasant. High-altitude clouds will make some sunshine possible in the morning. In the afternoon, clouds will thicken, the light become diffuse. It will remain partly cloudy in the Bregenzerwald mountains and Prealps. In ridgeline zones and pass areas, stormy-strength winds. At 2000 m: -7 to -3 degrees. Strong to stormy NW winds.

Outlook

On Friday night, rainfall/snowfall will set in. The fresh snow will be transported far-reachingly at high altitudes. The snowpack remains prone to triggering, avalanche danger levels may rise further.

Translated by Jeffrey McCabe, www.creativtrans.com

Avalanche problems



Danger ratings



Expositions

