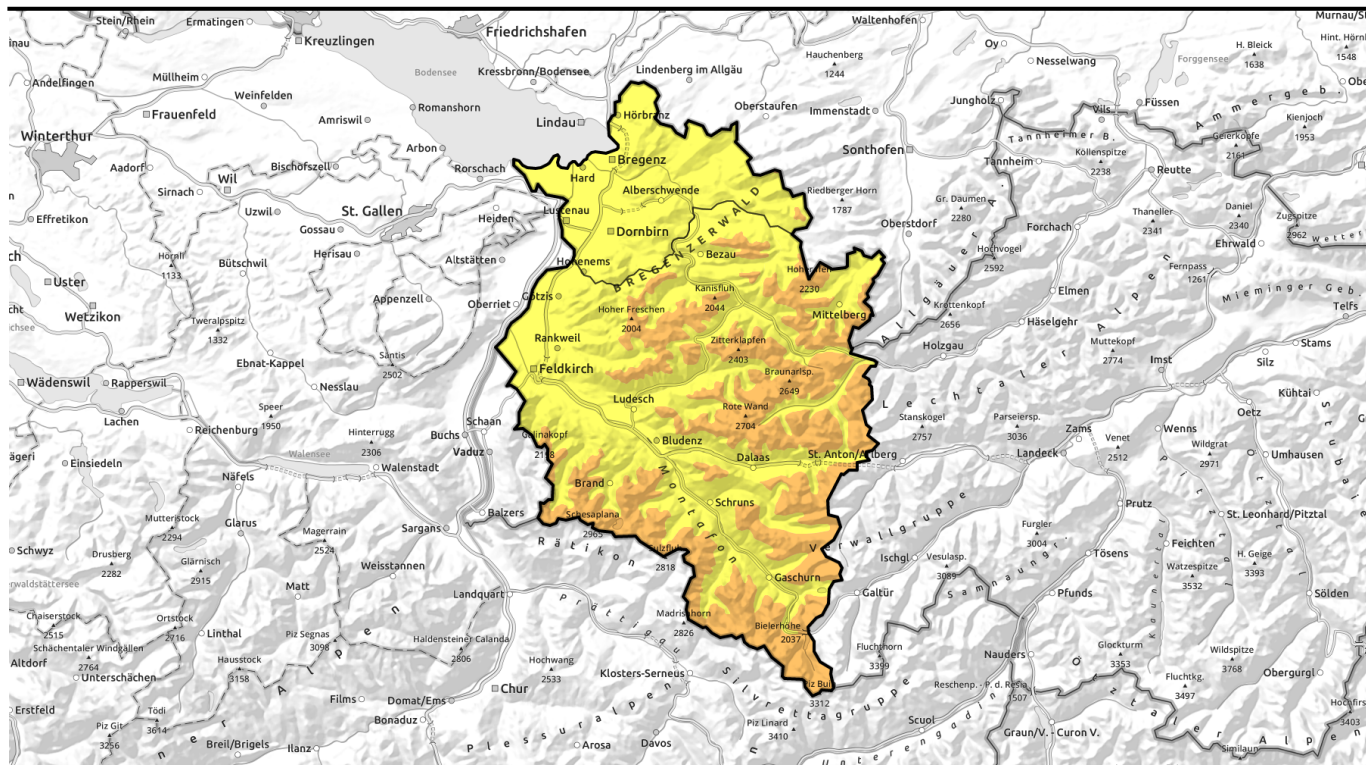


Avalanche report for Friday, 03.02.2023

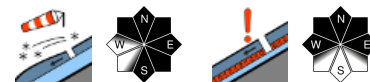


As a result of fresh snow and winds: unfavourable conditions + increase in avalanche danger



1600 m

Rätikon West, Rätikon Ost, Silvretta, Verwall, Lechquellengebirge, Lechtaler Alpen, Allgäuer Alpen, Bregenzerwaldgebirge



forestline

Voralpenbereich



Avalanche problems



Danger ratings



Expositions



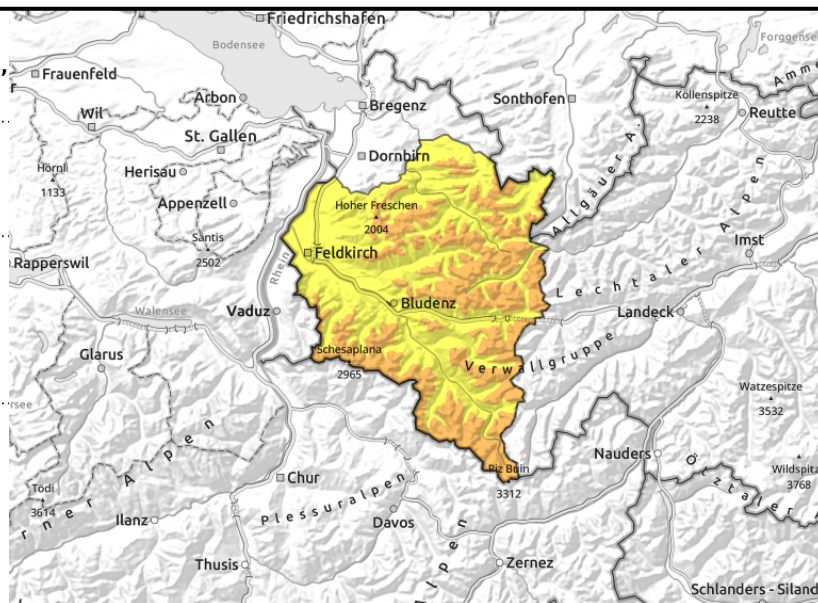
Avalanche report for Friday, 03.02.2023

Rätikon West, Rätikon Ost, Silvretta, Verwall, Lechquellengebirge, Lechtaler Alpen, Allgäuer Alpen, Bregenzerwaldgebirge



wind-loaded steep slopes, gullies and bowls, behind abrupt discontinuities in the terrain

esp. on shady high-altitude slopes: often unfavourable intermediate layers



Attention winter sports enthusiasts: fresh snow and fresh snowdrifts are trigger-sensitive

Fresh snowdrift accumulations are frequently prone to triggering, and increase in size and spread with ascending altitude. One person can triggered small-to-medium slab avalanches in gullies and bowls, behind abrupt discontinuities in the terrain. Whumpf noises and glide cracks are signals of danger. Also, on steep, seldom-tracked shady slopes at high altitudes, deeper layers can be triggered by large additional loading. Naturally triggered avalanches are possible in rocky or wind-loaded steep terrain: loose-snow and slab releases, particularly with solar radiation.

Snowpack structure

Amid strong-to-stormy NW winds the fresh snow will be transported far-reachingly and more trigger-sensitive snowdrift accumulations will be generated, deposited atop an unfavourable snowpack surface, often with surface hoar, melt-freeze crusts or soft layers. Bonding of fresh snow and drifts to the layers beneath them is moderate to poor. At high altitudes esp. on steep shady slopes, older unfavourable layers are evident. These spots are not visible to the naked eye.

Weather

Nocturnal hours: in the early part of the night, snowfall down to 800 m. After midnight the precipitation will ease. Friday: it will begin with fog, but usually remain dry. Visibility will improve as the day unfolds, a few bright intervals are possible. Winds will be stormy in the peaks. At 2000 m: -7 to -3 degrees. Strong to stormy NW winds.

Outlook

On Friday night, rainfall/snowfall will set in. The fresh snow will be transported far-reachingly at high altitudes. The snowpack remains prone to triggering, avalanche danger levels may rise further.

Avalanche problems

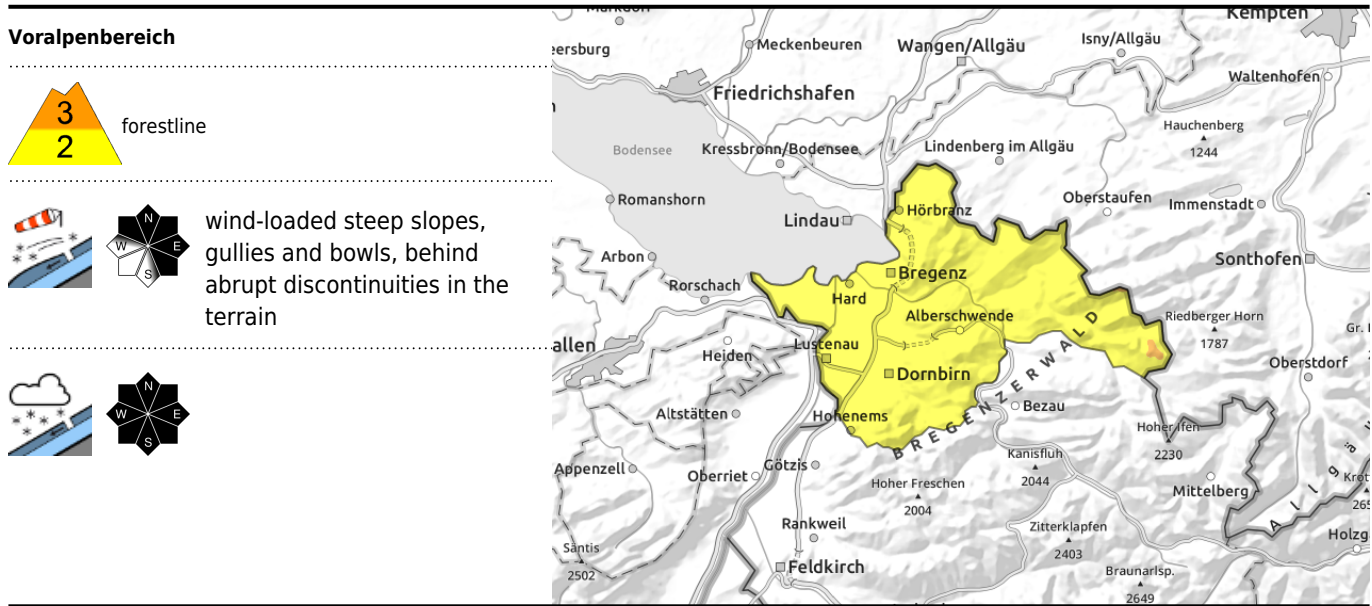


Danger ratings



Expositions





Fresh snowdrifts are prone to triggering

Fresh snow and freshly generated snowdrift accumulations are prone to triggering. Exposed ridges and crests are often windblown and bare of snow. Esp. intermediate altitudes evidence surface hoar. One person can trigger small-to-medium avalanches in gullies and bowls and behind abrupt discontinuities in the terrain. In extremely steep and rocky terrain, small to medium sized loose-snow avalanches are possible.

Snowpack structure

Amid further snowfall and strong W/NW winds, trigger-sensitive snowdrift accumulations are still being generated. Exposed crests and ridges are often windblown and bare of snow. Esp. at intermediate altitudes there is often surface hoar. On south-facing slopes at high altitudes, often a melt-freeze crust and on north-facing slopes in leeward terrain, often soft layers or surface hoar. Bonding of the fresh snow to the old snowpack is often poor.

Weather

Nocturnal hours: in the early part of the night, snowfall down to 800 m. After midnight the precipitation will ease. Friday: it will begin with fog, but usually remain dry. Visibility will improve as the day unfolds, a few bright intervals are possible. Winds will be stormy in the peaks. At 2000 m: -7 to -3 degrees. Strong to stormy NW winds.

Outlook

On Friday night, rainfall/snowfall will set in. The fresh snow will be transported far-reachingly at high altitudes. The snowpack remains prone to triggering, avalanche danger levels may rise further.

Translated by Jeffrey McCabe, www.creativtrans.com

Avalanche problems



Danger ratings



Expositions

