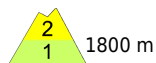
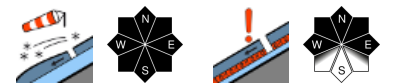


As a result of fresh snow and winds: increase in avalanche danger



1800 m

Rätikon West, Rätikon Ost, Silvretta, Verwall, Lechquellengebirge, Lechtaler Alpen, Allgäuer Alpen, Bregenzerwaldgebirge



Voralpenbereich



Avalanche problems



Danger ratings



Expositions

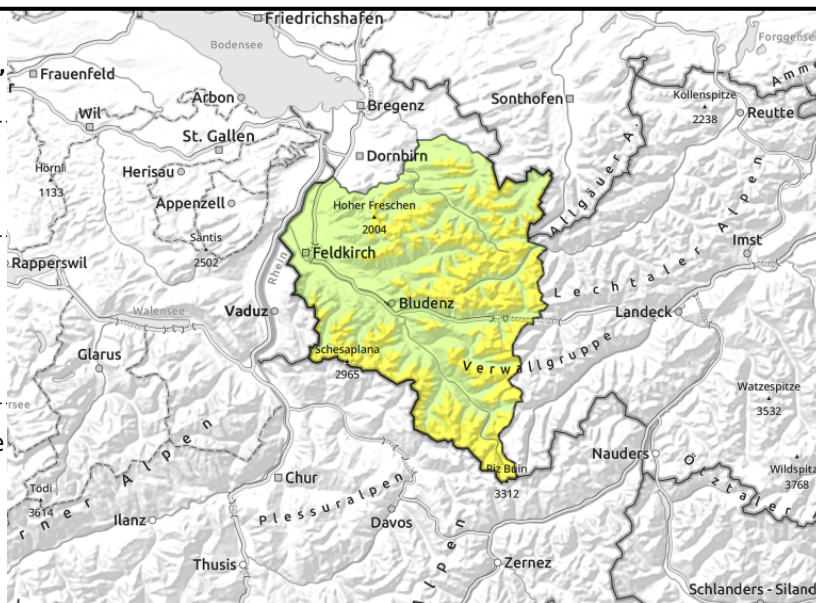


Rätikon West, Rätikon Ost, Silvretta, Verwall, Lechquellengebirge, Lechtaler Alpen, Allgäuer Alpen, Bregenzerwaldgebirge



wind-loaded steep slopes, gullies and bowls, behind abrupt discontinuities in the terrain

superficial layers; in high alpine regions on steep shady slopes; often unfavourable intermediate layers



Main danger: snowdrift accumulations prone to triggering; weak old snow at high altitudes.

Fresh snowdrift accumulations are frequently prone to triggering, mostly small. Danger zones occur near to and distant from ridgelines in steep terrain in all aspects and in wind-loaded gullies and bowls, behind abrupt discontinuities in the terrain. One person can trigger an avalanche, usually small-sized. In addition, superficial layers in gullies and bowls, behind abrupt discontinuities in the terrain, and in transitions from shallow to deep snow can be triggered by large additional loading. Danger zones increase with ascending altitude in size and in frequency. If an avalanche fractures down to more deeply embedded layers in the old snowpack it can grow to medium size. Also, on steep, seldom-tracked shady slopes at high altitudes, deeper layers can be triggered by large additional loading.

Snowpack structure

Fresh snowfall, strong W/NW winds, new trigger-sensitive snowdrift accumulations in all aspects. Winds have made ridges and crests bare of snow. In many places surface hoar had formed before the precipitation, now blanketed by the fresh snow. On south-facing slopes at high altitudes the fresh snow and drifts often lie atop a melt-freeze crust which is not capable of bearing loads; on north-facing slopes in wind-protected terrain atop soft layers and surface hoar. All in all, the trigger sensitivity of the snowpack has been raised. In ridgeline zone and pass areas, behind abrupt discontinuities in the terrain and in exposed zones, older snowdrift accumulations also occur. They are often inadequately bonded with the old snowpack surface or have weak intermediate layers. At high altitudes, esp. on steep shady slopes, there are often weak layers evident inside the snowpack. These spots are not visible to the naked eye.

Weather

Nocturnal hours: gray overcast skies, intermittent light snowfall (snowfall level: 800 m). Wednesday: heavily overcast, hardly any sunshine, limited visibility above 1500 m. Light snowfall esp. in Bregenzerwald mountains, Arlberg region, Verwall. At 2000 m: -5 degrees. Strong westerly winds.

Avalanche problems



Danger ratings



Expositions



Avalanche report for **Wednesday, 01.02.2023**

Outlook

With increasing snowfall and strong NW winds, avalanche danger will increase significantly over widespread areas.

Avalanche problems



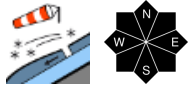
Danger ratings



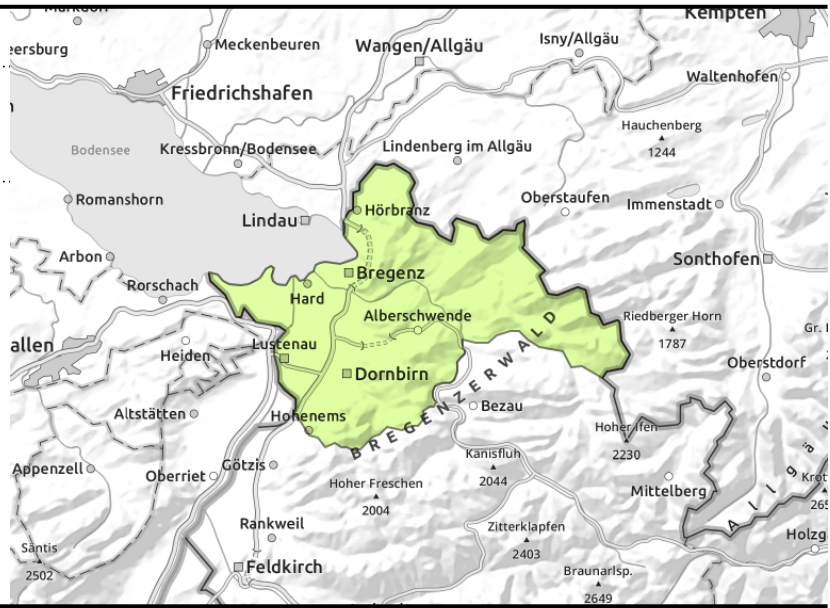
Expositions



Voralpenbereich



wind-loaded steep slopes, gullies and bowls



small snowdrift accumulations prone to triggering

Avalanche danger is generally low. W/NW winds are generating snowdrift accumulations in all aspects, frequently prone to triggering, mostly small. On steep slopes both near to and distant from ridgeline in wind-loaded gullies and bowls, one person can trigger a slab avalanche. They are generally small sized. The danger of taking a fall outweighs that of being buried in snow masses.

Snowpack structure

As a result of fresh snow and strong-to-stormy W/NW winds, snowdrift accumulations are being generated in all aspects. Winds have made ridges and crests bare of snow. In many places surface hoar had formed before the precipitation, now blanketed by the fresh snow. On south-facing slopes at high altitudes the fresh snow and drifts often lie atop a melt-freeze crust which is not capable of bearing loads; on north-facing slopes in wind-protected terrain atop soft layers and surface hoar. Bonding of fresh snow to the snowpack is inadequate.

Weather

Nocturnal hours: gray overcast skies, intermittent light snowfall (snowfall level: 800 m). Wednesday: heavily overcast, hardly any sunshine, limited visibility above 1500 m. Light snowfall esp. in Bregenzerwald mountains, Arlberg region, Verwall. Strong W/NW winds increase subjective feeling of cold. At 2000 m: -5 degrees. W/NW winds.

Outlook

With increasing snowfall and strong NW winds, avalanche danger will increase significantly over widespread areas.

Translated by Jeffrey McCabe, www.creativtrans.com

Avalanche problems



Danger ratings



Expositions

