


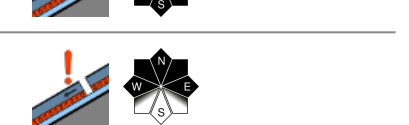


Avalanche danger moderate, often regionally low

	<p>1800 m Rätikon West, Rätikon Ost, Silvretta, Verwall, Lechquellengebirge, Lechtaler Alpen</p>	
	<p>1800 m Voralpenbereich, Bregenzerwaldgebirge, Allgäuer Alpen</p>	

Avalanche problems



Danger ratings

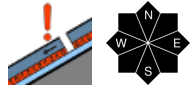


Expositions

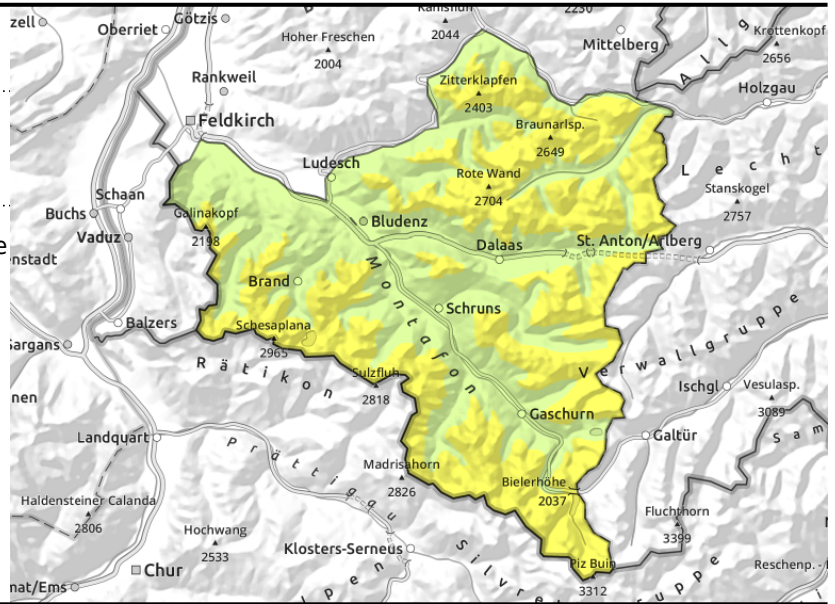


Avalanche report for Thursday, 26.01.2023

Rätikon West, Rätikon Ost, Silvretta, Verwall, Lechquellengebirge, Lechtaler Alpen



superficial layers; in high alpine regions on steep shady slopes; often unfavourable intermediate layers



Main danger: persistent weak layer

Superficial layers in wind-impacted steep terrain, in wind-loaded gullies and bowls and behind abrupt discontinuities in the terrain are often still prone to triggering. Danger zones increase in size and spread with ascending altitude. Small-to-medium sized slab avalanches can trigger even from one sole skier. In addition, on steep, less-tracked shady slopes in high alpine regions or in transitions from shallow to deep snow, deeply embedded layers inside the snowpack are triggerable by large additional loading. As a result of solar radiation and daytime warming, more slides and small-sized loose-snow avalanches are possible. On steep grass-covered slopes, isolated small glide-snow avalanches are also possible. Below 1800 m, isolated small avalanches can release in extremely steep terrain.

Snowpack structure

Slightly higher temperatures and less wind will help the snowpack to settle and consolidate. In ridgeline and pass areas, behind abrupt discontinuities in the terrain and in wind-impacted terrain, older snowdrifts occur, often poorly bonded with the old snowpack surface or riddled with weak intermediate layers. In leeward terrain and at low altitudes the fresh snow is still loose, despite partial settling. At high altitudes, especially on shady slopes, there are weak layers inside the snowpack. These danger zones are not visible to the naked eye. At low altitudes the snowpack is well consolidated by and large.

Weather

Nocturnal hours: low-lying foglike clouds are moving into Bregenzerwald and Rhine Valley from the north, possibly reaching the Walgau. In the Montafon and Klostertal, scattered clouds or blue skies. Thursday: low-lying clouds, poor visibility. Better in the Silvretta, Rätikon and Verwall. Temperatures will drop a noticeable notch. At 2000 m: -9 to -6 degrees. Moderate NE winds.

Outlook

Friday will have gray skies and be wintery cold, with light snowfall possible, but minor amounts at best. Avalanche danger is not expected to change significantly.

Avalanche problems



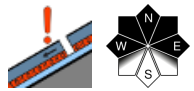
Danger ratings



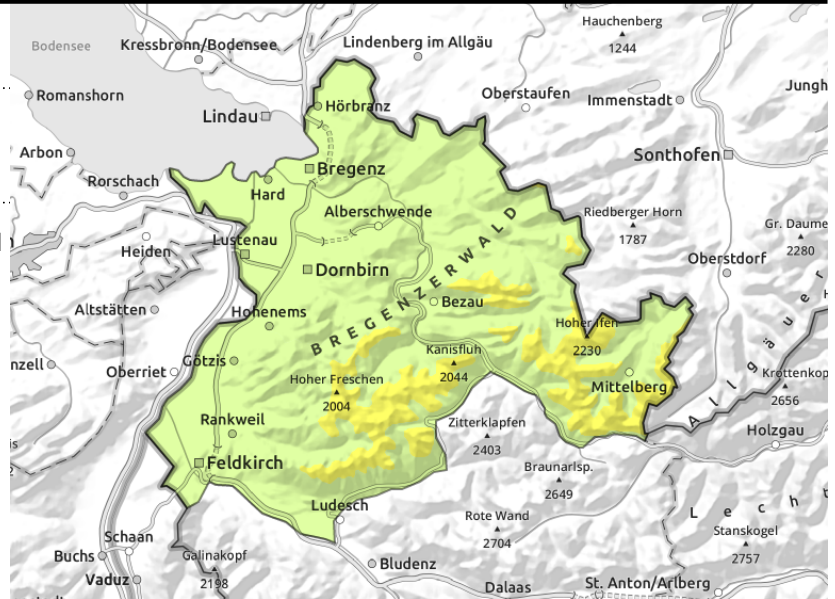
Expositions



Voralpenbereich, Bregenzerwaldgebirge, Allgäuer Alpen



older snowdrifts and superficial layers in ridgeline terrain, gullies and bowls and behind abrupt discontinuities in the terrain



Main danger : older snowdrift accumulations at high altitudes

Superficial layers in wind-impacted steep terrain, in wind-loaded gullies and bowls and behind abrupt discontinuities in the terrain are often still prone to triggering. Danger zones increase in size and spread with ascending altitude. Small-to-medium sized slab avalanches can trigger even from one sole skier. In addition, on steep, less-tracked shady slopes in high alpine regions or in transitions from shallow to deep snow, deeply embedded layers inside the snowpack are triggerable by large additional loading. On steep grass-covered slopes, isolated small glide-snow avalanches are also possible. Below 1800 m, isolated small avalanches can release in extremely steep terrain.

Snowpack structure

Slightly higher temperatures and less wind will help the snowpack to settle and consolidate. In ridgeline and pass areas, behind abrupt discontinuities in the terrain and in wind-impacted terrain, older snowdrifts occur, often poorly bonded with the old snowpack surface or riddled with weak intermediate layers. In leeward terrain and at low altitudes the fresh snow is still loose, despite partial settling. At high altitudes, especially on shady slopes, there are weak layers inside the snowpack. These danger zones are not visible to the naked eye. At low altitudes the snowpack is well consolidated by and large.

Weather

Nocturnal hours: low-lying foglike clouds are moving into Bregenzerwald and Rhine Valley from the north, possibly reaching the Walgau. In the Montafon and Klostertal, scattered clouds or blue skies. Thursday: low-lying clouds, poor visibility. Better in the Silvretta, Rätikon and Verwall. Temperatures will drop a noticeable notch. At 2000 m: -9 to -6 degrees. Moderate NE winds.

Outlook

Friday will have gray skies and be wintery cold, with light snowfall possible, but minor amounts at best. Avalanche danger is not expected to change significantly.

Translated by Jeffrey McCabe, www.creativtrans.com

Avalanche problems



Danger ratings



Expositions

