

Considerable avalanche danger over widespread areas

	2200 m	Rätikon West, Rätikon Ost, Silvretta	
	forestline	Voralpenbereich, Bregenzerwaldgebirge	
	2000 m	Allgäuer Alpen, Lechquellengebirge, Lechtaler Alpen, Verwall	

Avalanche problems



Danger ratings



Expositions

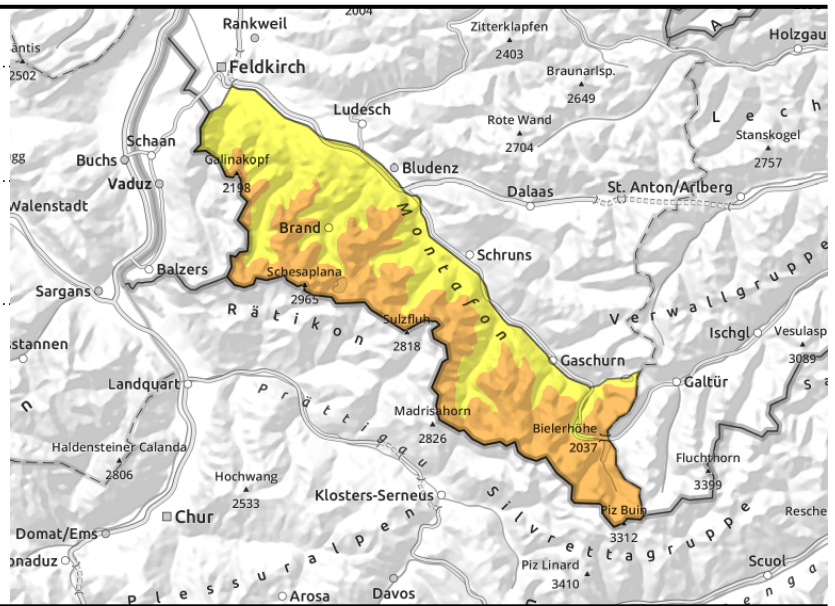


Rätikon West, Rätikon Ost, Silvretta



steep wind-impacted terrain, wind-loaded gullies and bowls

>2400m on steep shady slopes, often unfavourable snowpack layers



Main danger: fresh snowdrifts and persistent weak layer

Fresh and older snowdrifts are prone to triggering particularly in steep wind-loaded gullies and bowls and behind abrupt discontinuities in the terrain. Avalanche prone locations increase in number and size with ascending altitude. In addition, proneness to triggering will increase somewhat during the daytime due to rising temperatures and solar radiation. Small to medium slab avalanches can be triggered by one sole winter sports enthusiast on steep, little-tracked slopes. Above 2400 m on steep shady slopes there are unfavourable layers in the old snowpack. Activities in backcountry demand experience in avalanche danger assessment on-site. In steep rocky terrain the fresh snow can trigger small to medium loose-snow and slab avalanches.

Snowpack structure

In ridgeline and pass areas, behind abrupt discontinuities in the terrain and in wind-loaded terrain, fresh and older snowdrift accumulations have been generated, often deposited atop loose and soft layer of fresh snow, atop older snowdrifts or atop melt-freeze encrusted layers. Bonding to the old snowpack and inside the layers themselves deteriorates with ascending altitude, the likelihood of triggering increases. In leeward terrain and at low altitudes the fresh snow is still mostly loose, despite a certain amount of settling. At high altitudes, esp. on steep shady slopes there are still weak layers evident inside the old snowpack. These weak layers are not visible to the naked eye.

Weather

Nocturnal hours: above the high fogbanks, esp. in Bregenzerwald and Prealps, scattered clouds, easterly winds will ease, Tuesday: only thin high-altitude clouds, mostly sunshine, but still cold, amid easing easterly winds. At 2000 m: -6 to -1 degree. Moderate to brisk easterly winds.

Outlook

Wednesday will be very sunny, apart from the fog-ridden zones. Temperatures at 2000 m will be -5 to -1 degree. Winds will slacken off noticeably. Avalanche danger will incrementally diminish.

Avalanche problems



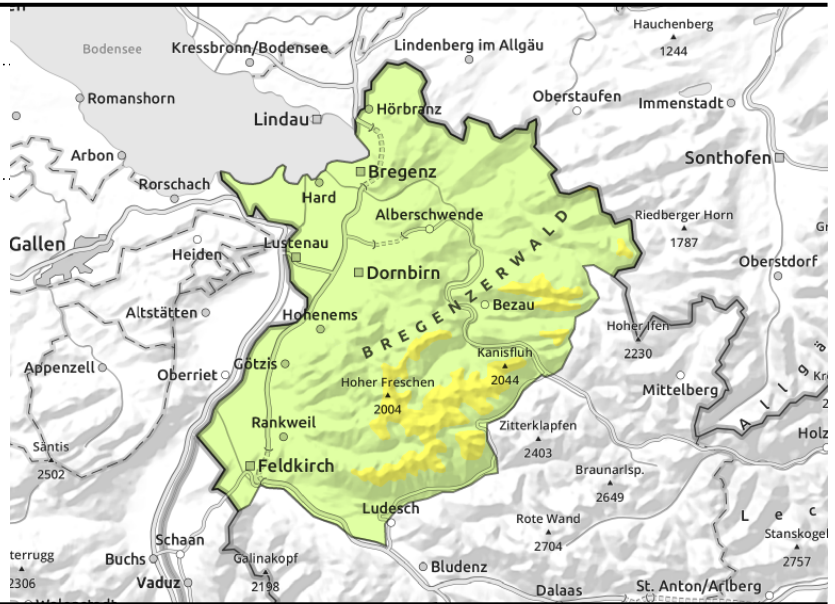
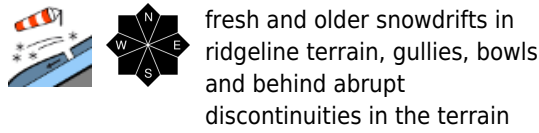
Danger ratings



Expositions



Voralpenbereich, Bregenzerwaldgebirge



Main danger : fresh and older snowdrift accumulations

Above the treeline, fresh and older snowdrift accumulations in ridgeline terrain, wind-loaded gullies and bowls and behind abrupt discontinuities in the terrain are prone to triggering. Small, isolated also medium-sized slab triggerings are possible in such areas. Danger zones tend to increase with ascending altitude in both size and in frequency. In addition, likelihood of triggering increases slightly during the daytime due to higher temperatures and solar radiation. Activities in outlying terrain demand much experience in assessing avalanche dangers on-site as well as a prudent route selection. Also small triggerings can bury persons in snow masses or force them to take a fall. In steep rocky terrain, small loose-snow avalanches are possible.

Snowpack structure

Amid intermittently moderate to strong-velocity winds, loose fresh snow will be transported in high altitude ridgeline and summit zones, generating fresh snowdrift accumulations which are prone to triggering. In leeward terrain and below the treeline, the latest batch of fresh fallen snow is still very loose, despite some settling.

Weather

Nocturnal hours: above the high fogbanks, esp. in Bregenzerwald and Prealps, scattered clouds, easterly winds will ease, Tuesday: only thin high-altitude clouds, mostly sunshine, but still cold, amid easing easterly winds. At 2000 m: -6 to -1 degree. Moderate to brisk easterly winds.

Outlook

Wednesday will be very sunny, apart from the fog-ridden zones. Temperatures at 2000 m will be -5 to -1 degree. Winds will slacken off noticeably. Avalanche danger will incrementally diminish.

Avalanche problems



Danger ratings



Expositions



Avalanche report for Tuesday, 24.01.2023

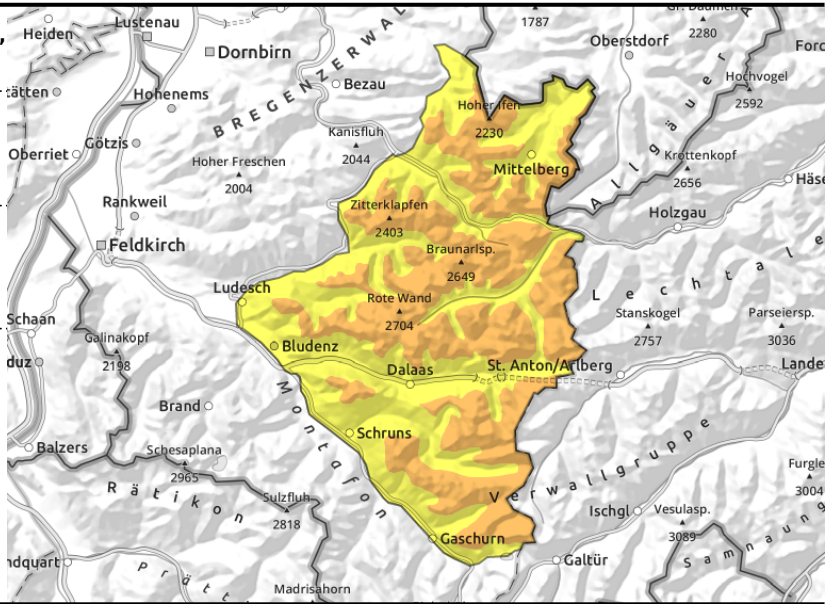


Allgäuer Alpen, Lechquellengebirge, Lechtaler Alpen, Verwall



wind-impacted steep terrain, wind-loaded gullies and bowls

on shady steep high alpine slopes: unfavourable layers



Main danger: fresh snowdrifts and persistent weak layer

Fresh and older snowdrifts are prone to triggering particularly in steep wind-loaded gullies and bowls and behind abrupt discontinuities in the terrain. Avalanche prone locations increase in number and size with ascending altitude. In addition, proneness to triggering will increase somewhat during the daytime due to rising temperatures and solar radiation. Small to medium slab avalanches can be triggered by one sole winter sports enthusiast on steep, little-tracked slopes. Above 2400 m on steep shady slopes there are unfavourable layers in the old snowpack. Activities in backcountry demand experience in avalanche danger assessment on-site. In steep rocky terrain the fresh snow can trigger small to medium loose-snow and slab avalanches.

Snowpack structure

In ridgeline and pass areas, behind abrupt discontinuities in the terrain and in wind-loaded terrain, fresh and older snowdrift accumulations have been generated, often deposited atop loose and soft layer of fresh snow, atop older snowdrifts or atop melt-freeze encrusted layers. Bonding to the old snowpack and inside the layers themselves deteriorates with ascending altitude, the likelihood of triggering increases. In leeward terrain and at low altitudes the fresh snow is still mostly loose, despite a certain amount of settling. At high altitudes, esp. on steep shady slopes there are still weak layers evident inside the old snowpack. These weak layers are not visible to the naked eye.

Weather

Nocturnal hours: above the high fogbanks, esp. in Bregenzerwald and Prealps, scattered clouds, easterly winds will ease, Tuesday: only thin high-altitude clouds, mostly sunshine, but still cold, amid easing easterly winds. At 2000 m: -6 to -1 degree. Moderate to brisk easterly winds.

Outlook

Wednesday will be very sunny, apart from the fog-ridden zones. Temperatures at 2000 m will be -5 to -1 degree. Winds will slacken off noticeably. Avalanche danger will incrementally diminish.

Translated by Jeffrey McCabe, www.creativtrans.com

Avalanche problems



Danger ratings



Expositions

