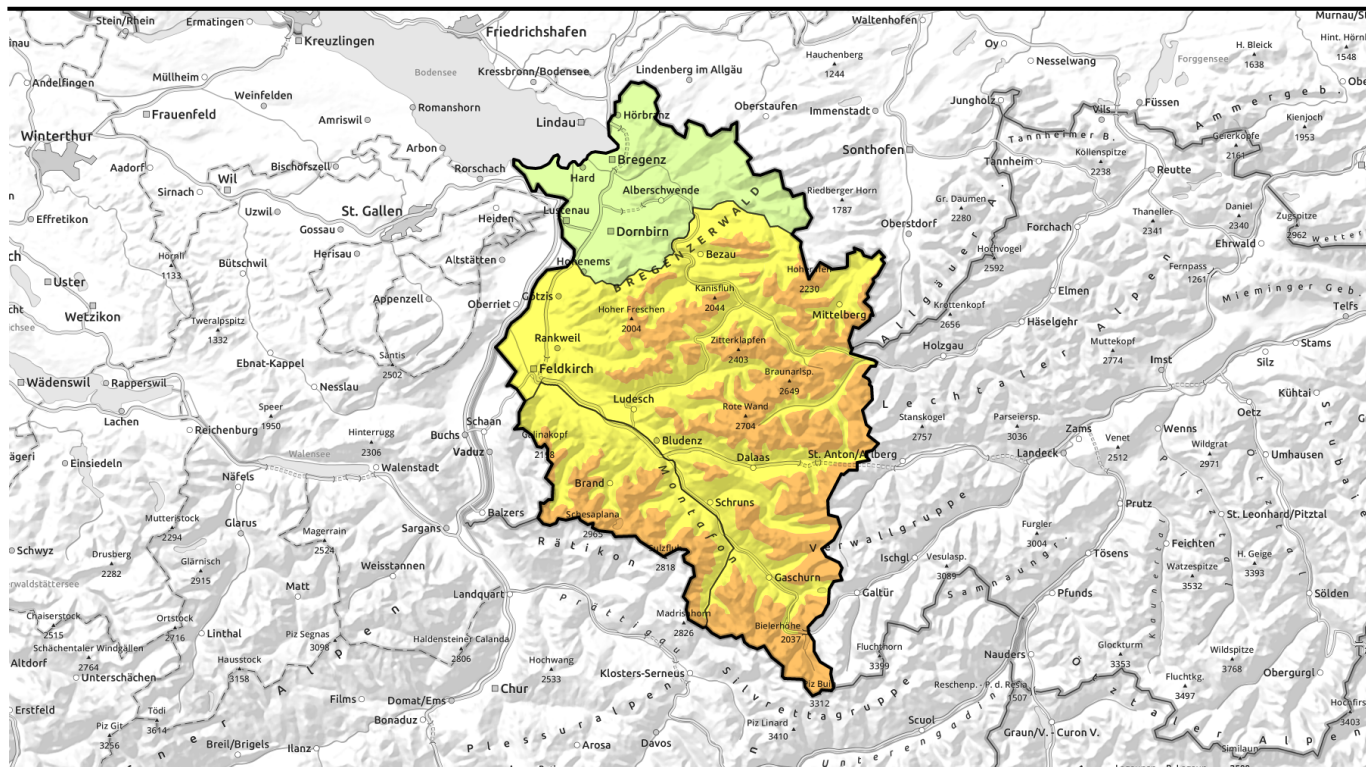


Avalanche report for Sunday, 22.01.2023



UPDATE 7:45 am: Considerable avalanche danger over widespread areas due to fresh snowfall and wind impact

	2200 m	Rätikon West, Rätikon Ost											
		Voralpenbereich											
	2000 m	Bregenzerwaldgebirge, Allgäuer Alpen, Lechquellengebirge, Lechtaler Alpen, Verwall, Silvretta											

Avalanche problems



Danger ratings



Expositions



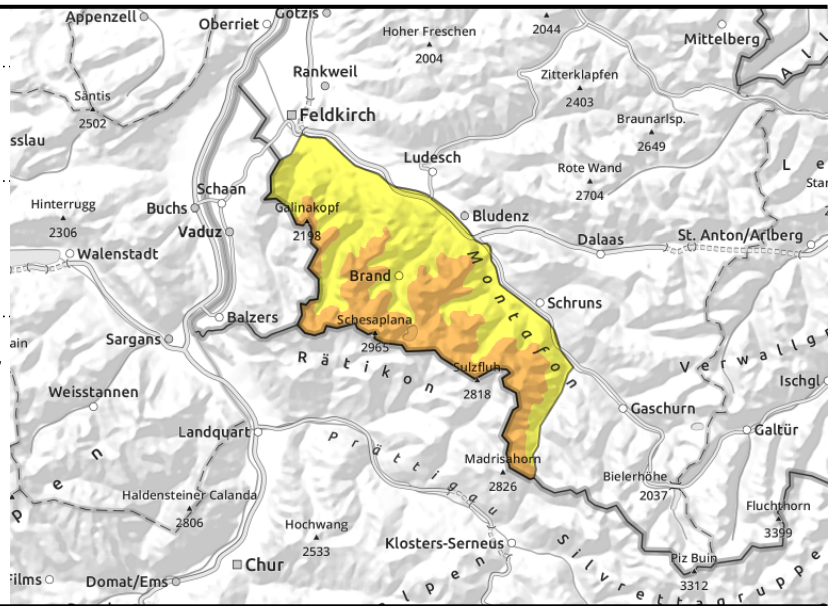
Rätikon West, Rätikon Ost



in some places a critical amount of fresh snow, often very loose



wind-impacted in steep terrain, wind-loaded gullies and bowls



Main danger: New and fresh snowdrifts and persistent weak layer

New and fresher snowdrifts are prone to triggering particularly in ridgeline zones, but also distant from ridgelines, wind-loaded gullies and bowls and behind abrupt discontinuities in the terrain. Avalanche prone locations increase in number with ascending altitude. Small to medium slab avalanches can be triggered by one sole winter sports enthusiast. If they fracture to deeper layers they can grow to large size. Above 2400 m on steep shady slopes there are unfavourable layers in the old snowpack. Activities in backcountry demand experience in avalanche danger assessment on-site. In steep rocky terrain the fresh snow can trigger small to medium loose-snow avalanches.

Snowpack structure

The loose fresh snow was transported by strong winds, drifts now lie deposited on N/E facing slopes, blanket older snowdrift accumulations of recent days in ridgeline and pass areas in particular. Exposed zones and knolls are often windblown, gullies and bowls are filled to the brim with drifts. Fresh snow and snowdrifts often lie deposited atop loose and soft layers, on older drifted masses or atop melt-freeze encrusted old snowpack surfaces and are often riddled with graupel. Bonding to the old snowpack deteriorates with ascending altitude. At high altitudes on steep shady slopes in particular, there are still weak layers deeply embedded inside the snowpack which are not visible to the naked eye.

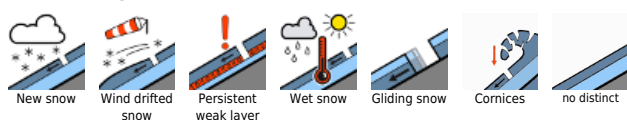
Weather

Nocturnal hours: gray skies, light snowfall, up to 10 cm of fresh snow is possible, amid low temperatures. Sunday: Snow showers will taper off, winds will ease, but visibility will remain reduced. Only the highest peaks of Silvretta and Rätikon will peek out of the cloud cover. Temperature at 2000 m: -12 degrees. Moderate to strong NE winds at high altitude.

Outlook

Monday morning will have scattered clouds in most regions. As of midday, more clouds will move in from the east. As evening approaches light snowfall will set in. Brisk, cold NE winds will be blowing. The settling and consolidation will continue only slowly due to the low temperatures. Thus, avalanche

Avalanche problems



Danger ratings



Expositions



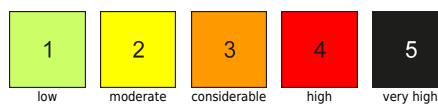
Avalanche report for **Sunday, 22.01.2023**

danger will decrease only incrementally.

Avalanche problems



Danger ratings



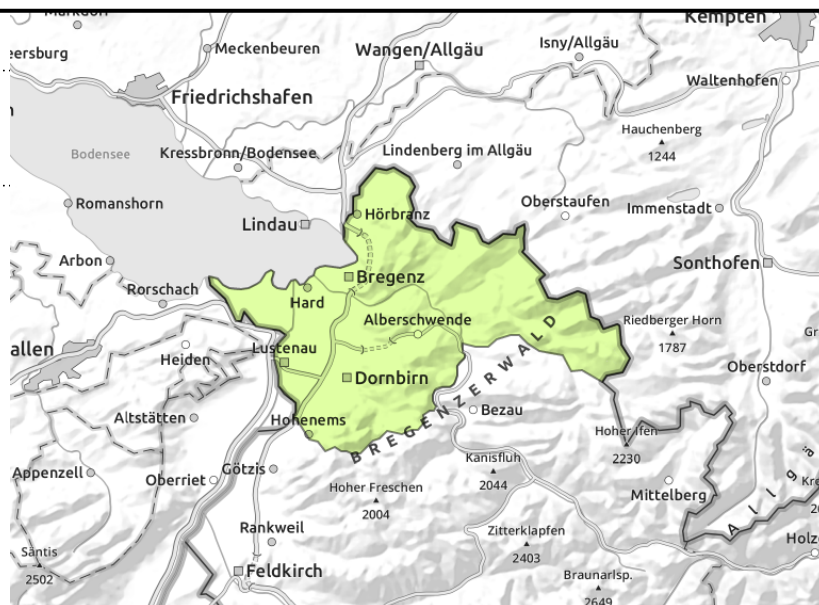
Expositions



Voralpenbereich



fresh snowdrift accumulations in ridgeline zones, gullies and bowls, behind abrupt discontinuities in the terrain



Fresh snowdrift accumulations will be generated due to snowfall and wind

With ascending altitude the fresh snowdrift accumulations become more prone to triggering in ridgeline zones, gullies and bowls, behind abrupt discontinuities in the terrain. At low altitudes the snow often fell on bare ground. There is still very little snow on the ground. Due to low temperatures, it will be preserved.

Snowpack structure

As a result of intermittently moderate-strength winds, the loose fresh fallen snow will be transported, particularly in ridgeline and summit zones, generating fresh snowdrift accumulations. These are prone to triggering. At low altitudes the snow frequently fell on bare ground. All in all, there is still little snow on the ground. Due to the low temperatures, it is being preserved.

Weather

Nocturnal hours: gray skies, light snowfall, up to 10 cm of fresh snow is possible, amid low temperatures. Sunday: Snow showers will taper off, winds will ease, but visibility will remain reduced. Only the highest peaks of Silvretta and Rätikon will peek out of the cloud cover. Temperature at 2000 m: -12 degrees. Moderate to strong NE winds at high altitude.

Outlook

Monday morning will have scattered clouds in most regions. As of midday, more clouds will move in from the east. As evening approaches light snowfall will set in. Brisk, cold NE winds will be blowing. Avalanche danger is not expected to change significantly.

Avalanche problems



Danger ratings



Expositions



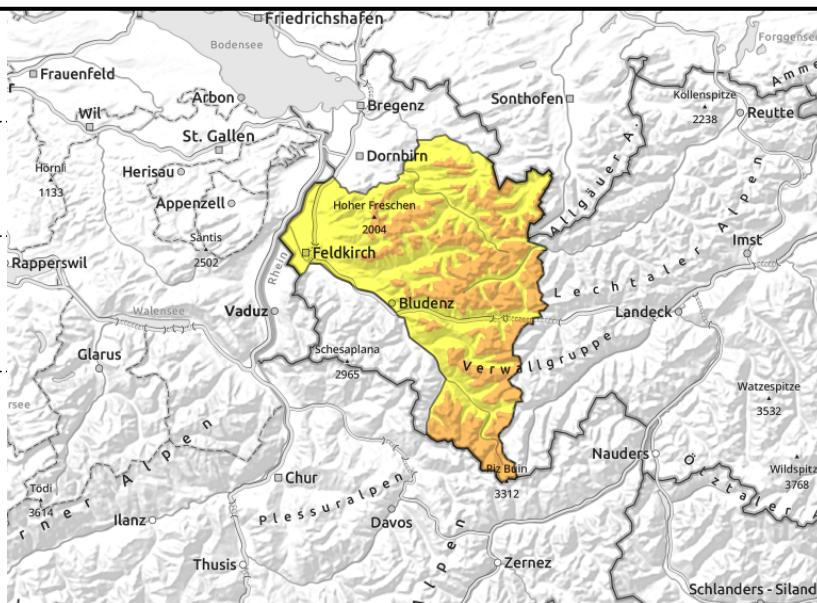
Bregenzerwaldgebirge, Allgäuer Alpen, Lechquellengebirge, Lechtaler Alpen, Verwall, Silvretta



in some places a critical amount of fresh snow, often very loose



wind-impacted in steep terrain, wind-loaded gullies and bowls



Main danger: New and fresh snowdrifts

New and fresher snowdrifts are prone to triggering particularly in ridgeline zones, but also distant from ridgelines, wind-loaded gullies and bowls and behind abrupt discontinuities in the terrain. Avalanche prone locations increase in number with ascending altitude. Small to medium slab avalanches can be triggered by one sole winter sports enthusiast. If they fracture to deeper layers they can grow to large size. Above 2400 m on steep shady slopes there are unfavourable layers in the old snowpack. Activities in backcountry demand experience in avalanche danger assessment on-site. In steep rocky terrain the fresh snow can trigger small to medium loose-snow avalanches.

Snowpack structure

The loose fresh snow was transported by strong winds, drifts now lie deposited on N/E facing slopes, blanket older snowdrift accumulations of recent days in ridgeline and pass areas in particular. Exposed zones and knolls are often windblown, gullies and bowls are filled to the brim with drifts. Fresh snow and snowdrifts often lie deposited atop loose and soft layers, on older drifted masses or atop melt-freeze encrusted old snowpack surfaces and are often riddled with graupel. Bonding to the old snowpack deteriorates with ascending altitude. At high altitudes on steep shady slopes in particular, there are still weak layers deeply embedded inside the snowpack which are not visible to the naked eye.

Weather

Nocturnal hours: gray skies, light snowfall, up to 10 cm of fresh snow is possible, amid low temperatures. Sunday: Snow showers will taper off, winds will ease, but visibility will remain reduced. Only the highest peaks of Silvretta and Rätikon will peek out of the cloud cover. Temperature at 2000 m: -12 degrees. Moderate to strong NE winds at high altitude.

Outlook

Monday morning will have scattered clouds in most regions. As of midday, more clouds will move in from the east. As evening approaches light snowfall will set in. Brisk, cold NE winds will be blowing. The settling and consolidation will continue only slowly due to the low temperatures. Thus, avalanche

Avalanche problems



Danger ratings



Expositions



Avalanche report for **Sunday, 22.01.2023**

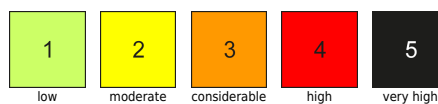
danger will decrease only incrementally.

Translated by Jeffrey McCabe, www.creativtrans.com

Avalanche problems



Danger ratings



Expositions

