

Regional increase in avalanche danger at high altitudes due to fresh snow and wind impact

<p>2200 m</p>	<p>Rätikon West, Silvretta, Rätikon Ost</p>	
	<p>Voralpenbereich</p>	
<p>1600 m</p>	<p>Bregenzerwaldgebirge, Allgäuer Alpen, Lechquellengebirge, Lechtaler Alpen, Verwall</p>	

Avalanche problems



Danger ratings



Expositions



Rätikon West, Silvretta, Rätikon Ost



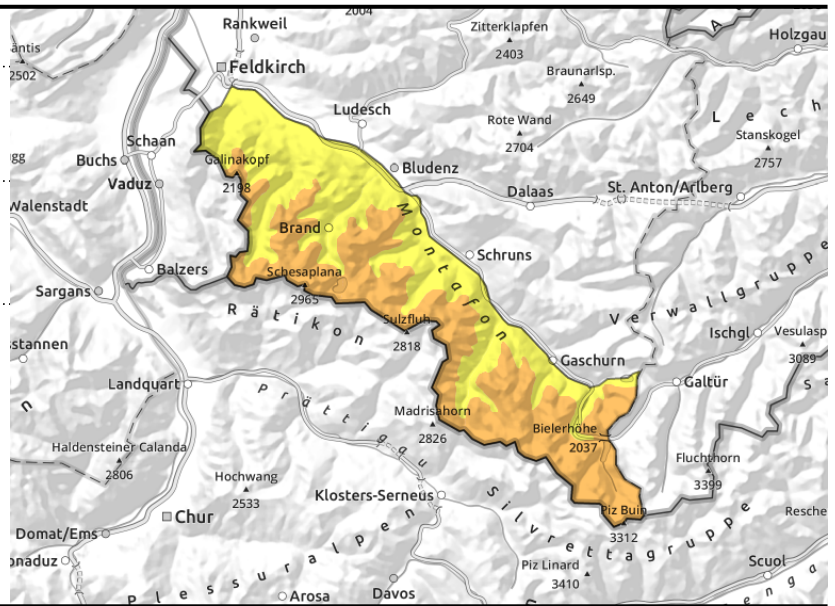
2200 m



fresh and blanketed snowdrift accumulations



>2400 m blanketed weak layers are difficult to recognize



Main danger: snowdrift accumulations and weak layers in the old snow

Fresh (and already blanketed) snowdrifts are prone to triggering particularly in ridgeline zones, but also distant from ridgelines, wind-loaded gullies and bowls and behind abrupt discontinuities in the terrain. Small to medium slab avalanches can be triggered by one sole winter sports enthusiast. If they fracture to deeper layers they can grow to large size. Above 2400 m on steep shady slopes there are unfavourable layers in the old snowpack. Activities in backcountry demand experience in avalanche danger assessment on-site. In steep rocky terrain the fresh snow can trigger small to medium loose-snow avalanches.

Snowpack structure

The loose fresh snow was transported by strong winds, snowdrifts now blanket older snowdrift accumulations of recent days in ridgeline and pass areas in particular. Exposed zones and knolls are often windblown, gullies and bowls are filled to the brim with drifts. Fresh snow and snowdrifts often lie deposited atop loose and soft layers, on older drifted masses or atop melt-freeze encrusted old snowpack surfaces and are often riddled with graupel. Bonding to the old snowpack deteriorates with ascending altitude. At high altitudes on steep shady slopes in particular, there are still weak layers deeply embedded inside the snowpack which are not visible to the naked eye.

Weather

Nocturnal hours: gray skies persist, light snowfall. Saturday: cold, NW winds will create inhospitable conditions, the peaks often shrouded in fog, light snowfall possible. Visibility often diffuse. Rätikon and Silvretta will have somewhat better conditions, bright intervals are not to be ruled out. At 2000 m: -14 degrees. Brisk NE winds.

Outlook

On Sunday, gray and cold. Only the high summits in Rätikon and Silvretta will penetrate through the cloud cover. Winds will slacken off somewhat. Settling and consolidation will continue only slowly due to the low temperatures. Thus, avalanche danger will decrease only incrementally.

Avalanche problems



Danger ratings



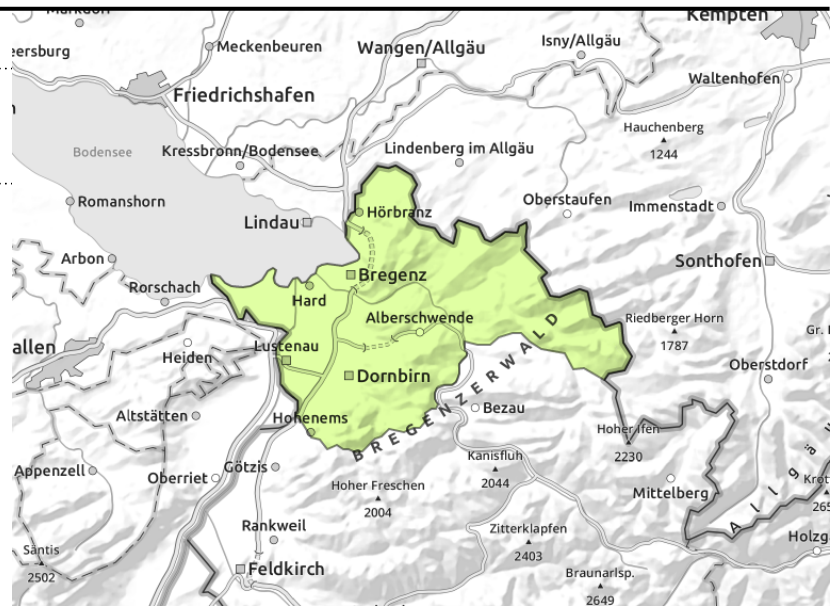
Expositions



Voralpenbereich



fresh snowdrift accumulations in high altitude ridgeline and summit zones, behind abrupt discontinuities in the terrain



Fresh snowdrift accumulations have been generated due to snowfall and wind

Fresh snowdrift accumulations will be generated with ascending altitude, transported from ridgeline and summit zones into gullies, bowls, behind abrupt discontinuities in the terrain. These are prone to triggering. Small slab avalanches are possible. Even small slab avalanches can bury persons in snow masses or force them to take a fall in exposed terrain.

Snowpack structure

Intermittently moderate-strength winds will transport the loose fresh snow with ascending altitudes in ridgeline and summit zones into gullies, bowls, behind abrupt discontinuities in the terrain. At low altitudes the snow fell on bare ground. There is still little snow on the ground. Due to low temperatures, it is being preserved.

Weather

Nocturnal hours: gray skies persist, light snowfall. Saturday: cold, NW winds will create inhospitable conditions, the peaks often shrouded in fog, light snowfall possible. Visibility often diffuse. Rätikon and Silvretta will have somewhat better conditions, bright intervals are not to be ruled out. At 2000 m: -14 degrees. Brisk NE winds.

Outlook

On Sunday, gray and cold. Only the high summits in Rätikon and Silvretta will penetrate through the cloud cover. Winds will slacken off somewhat. Depending on amounts of fresh snow and wind, avalanche danger levels could increase again.

Avalanche problems



Danger ratings



Expositions



Bregenzerwaldgebirge, Allgäuer Alpen, Lechquellengebirge, Lechtaler Alpen, Verwall



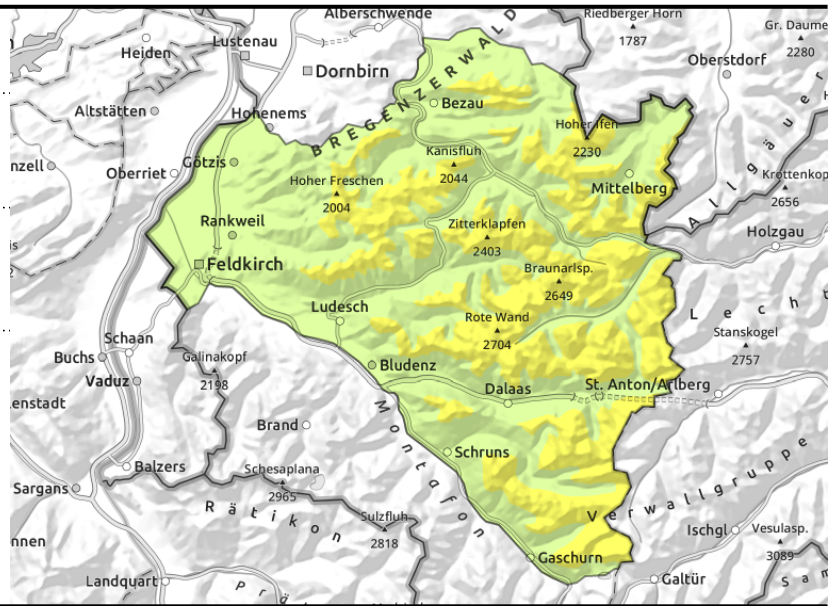
1600 m



fresh and older snowdrifts



>2400 m blanketed weak layers are difficult to recognize



Main danger: fresh snowdrift accumulations and weak old snow

Fresh (and already blanketed) snowdrifts are prone to triggering particularly in ridgeline zones, but also distant from ridgelines, wind-loaded gullies and bowls and behind abrupt discontinuities in the terrain. Small to medium slab avalanches can be triggered by one sole winter sports enthusiast. If they fracture to deeper layers they can grow to large size. Above 2400 m on steep shady slopes there are unfavourable layers in the old snowpack. Activities in backcountry demand experience in avalanche danger assessment on-site. In steep rocky terrain the fresh snow can trigger small to medium loose-snow avalanches.

Snowpack structure

The loose fresh snow was transported by strong winds, snowdrifts now blanket older snowdrift accumulations of recent days in ridgeline and pass areas in particular. Exposed zones and knolls are often windblown, gullies and bowls are filled to the brim with drifts. Fresh snow and snowdrifts often lie deposited atop loose and soft layers, on older drifted masses or atop melt-freeze encrusted old snowpack surfaces and are often riddled with graupel. Bonding to the old snowpack deteriorates with ascending altitude. At high altitudes on steep shady slopes in particular, there are still weak layers deeply embedded inside the snowpack which are not visible to the naked eye.

Weather

Nocturnal hours: gray skies persist, light snowfall. Saturday: cold, NW winds will create inhospitable conditions, the peaks often shrouded in fog, light snowfall possible. Visibility often diffuse. Rätikon and Silvretta will have somewhat better conditions, bright intervals are not to be ruled out. At 2000 m: -14 degrees. Brisk NE winds.

Outlook

On Sunday, gray and cold. Only the high summits in Rätikon and Silvretta will penetrate through the cloud cover. Winds will slacken off somewhat. Depending on amounts of fresh snow and wind, avalanche danger levels could increase again.

Translated by Jeffrey McCabe, www.creativtrans.com

Avalanche problems



Danger ratings



Expositions

