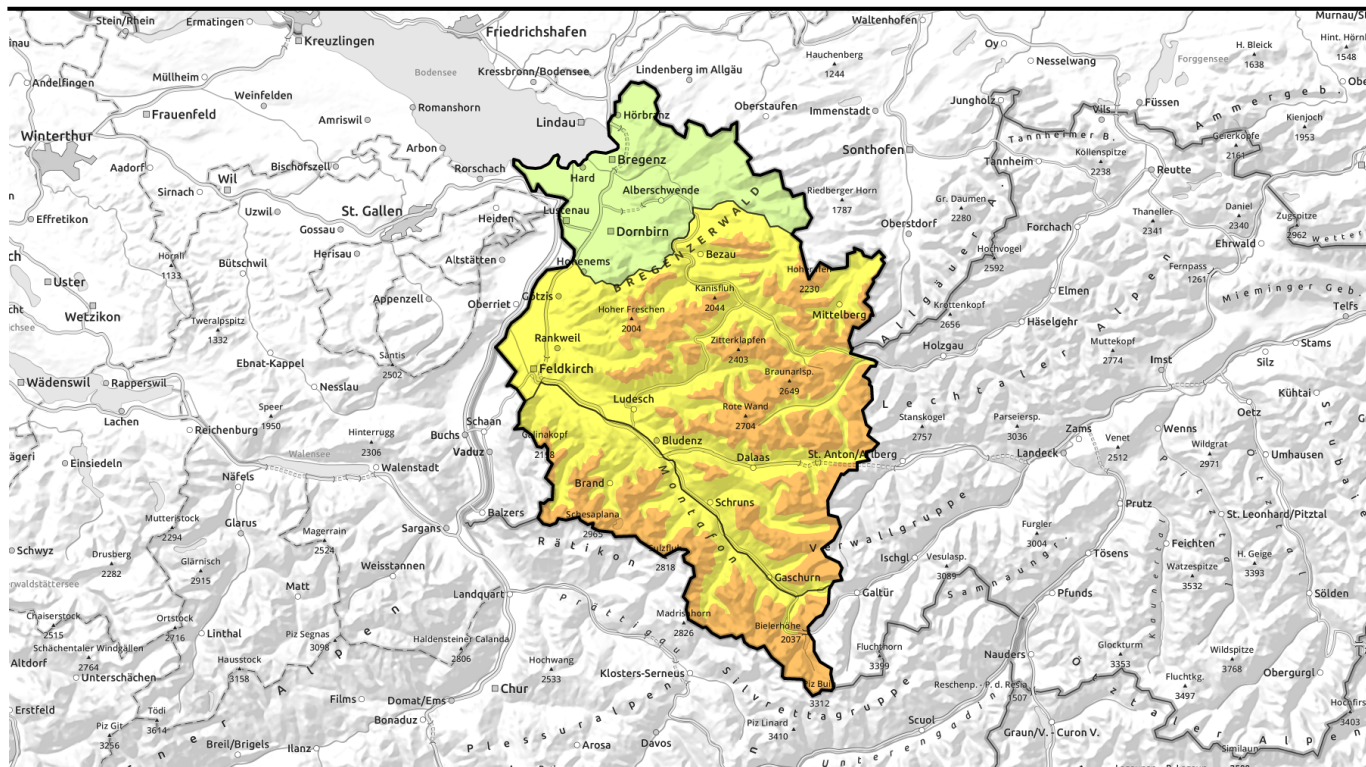


# Avalanche report for Monday, 16.01.2023



## Considerable avalanche danger at high altitudes due to fresh snow and winds

	2200 m	Rätikon West, Rätikon Ost, Silvretta				
		Voralpenbereich				
	2000 m	Bregenzerwaldgebirge, Allgäuer Alpen, Lechquellengebirge, Lechtaler Alpen, Verwall				

### Avalanche problems



### Danger ratings



### Expositions



**Rätikon West, Rätikon Ost, Silvretta**



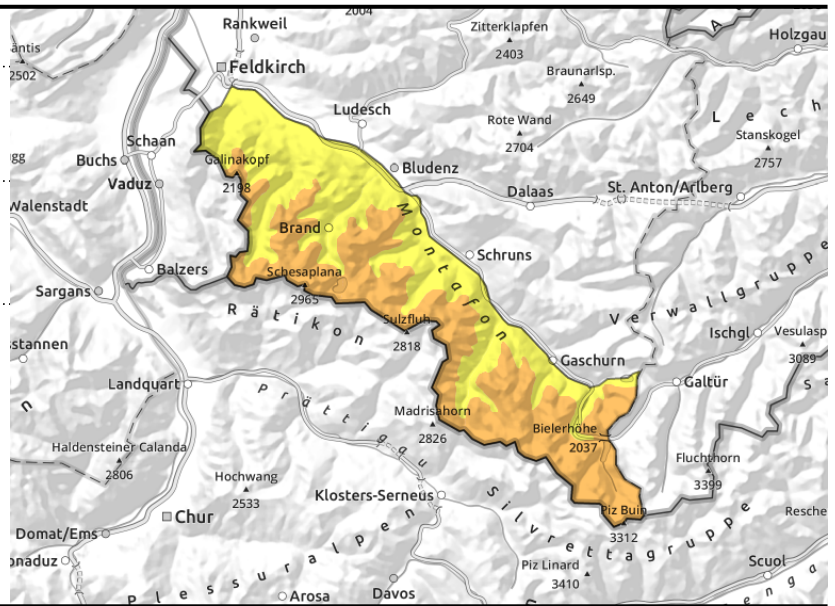
2200 m



fresh snowdrift accumulations, also distant from ridgelines



>2400 m blanketed weak layers are difficult to recognize



**Main danger: fresh snow and snowdrift accumulations and weak layers in the old snow**

Fresh snowdrifts are prone to triggering particularly in ridgeline zones, but also distant from ridgelines, wind-loaded gullies and bowls and behind abrupt discontinuities in the terrain. They tend to increase with ascending altitude. Medium slab avalanches can be triggered by one sole winter sports enthusiast. If they fracture to deeper layers they can grow to large size. Above 2400 m on steep shady slopes there are unfavourable layers in the old snowpack. Activities in backcountry demand experience in avalanche danger assessment on-site. In steep rocky terrain above 2400 m the fresh snow can trigger small to medium loose-snow avalanches naturally.

**Snowpack structure**

By this evening in the Silvretta, 10-15 cm of fresh snow has fallen, in the Rätikon 10 cm. Westerly winds at strong-to-storm strength transported the new snow and loose old snow. The fresh snow and fresh drifts from recent days have been able to settle somewhat in the mild temperatures, and consolidate. Fresh snow and drifts lie atop loosely-packed and soft layers, on older snowdrift masses or atop melt-freeze encrusted surfaces and are often riddled with graupel. Bonding to the old snowpack deteriorates with ascending altitude. At high altitudes on steep shady slopes in particular, there are still weak layers deeply embedded inside the snowpack which are not visible to the naked eye.

**Weather**

Nocturnal hours: Skies will be slightly cloudy, westerly winds will slacken off. Monday: southerly foehn winds will alternate with cloudbanks as they pass through, accompanied by intervals of sunshine. Towards evening, clouds will become denser, a few snow showers are possible. Southerly foehn winds from the southwest will be brisk to strong.

**Outlook**

Cloudbanks passing through will alternate with sunny intervals on Tuesday. Some foehn wind influence. Towards evening, clouds will move in, light snowfall set in. Avalanche danger levels are not

**Avalanche problems**



**Danger ratings**



**Expositions**



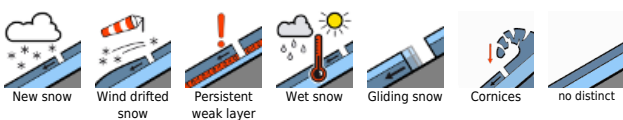
published at 15.01.2023, 18:00 h by Bernhard Anwander

# Avalanche report for **Monday, 16.01.2023**

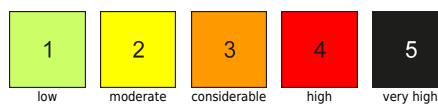
expected to change initially.



## Avalanche problems



## Danger ratings



## Expositions

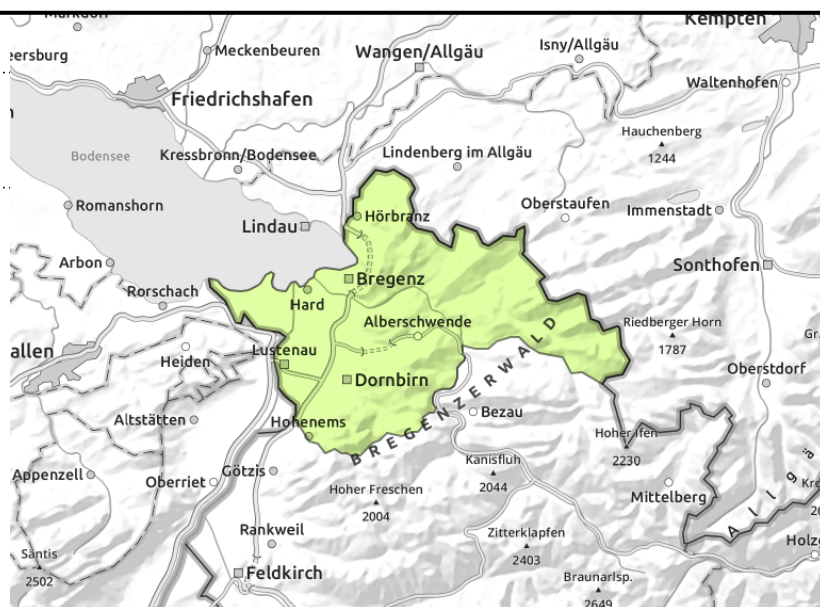


# Avalanche report for Monday, 16.01.2023

## Voralpenbereich



small snowdrift accumulations in high altitude ridgeline and summit zones



## Small snowdrift accumulations have been generated due to fresh snow and wind

The small amount of fresh snow still effects only low avalanche danger. As a result of fresh snow and strong westerly winds, small snowdrift accumulations are prone to triggering at high altitudes. Risks of falling need to be taken into consideration.

### Snowpack structure

By this evening a few cm of snowfall fell. Westerly winds at strong-to-storm strength transported the new snow and loose old snow. The fresh snow and fresh drifts from recent days have been able to settle somewhat in the mild temperatures, and consolidate. At low altitudes there is very little snow on the ground.

### Weather

Nocturnal hours: Skies will be slightly cloudy, westerly winds will slacken off. Monday: southerly foehn winds will alternated with cloudbanks as they pass through, accompanied by intervals of sunshine. Towards evening, clouds will become denser, a few snow showers are possible. Southerly foehn winds from the southwest will be brisk to strong.

### Outlook

Cloudbanks passing through will alternate with sunny intervals on Tuesday. Some foehn wind influence. Towards evening, clouds will move in, light snowfall set in. Avalanche danger levels are not expected to change initially.

### Avalanche problems



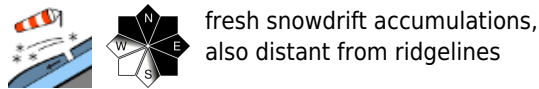
### Danger ratings



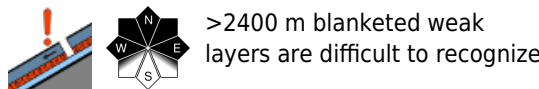
### Expositions



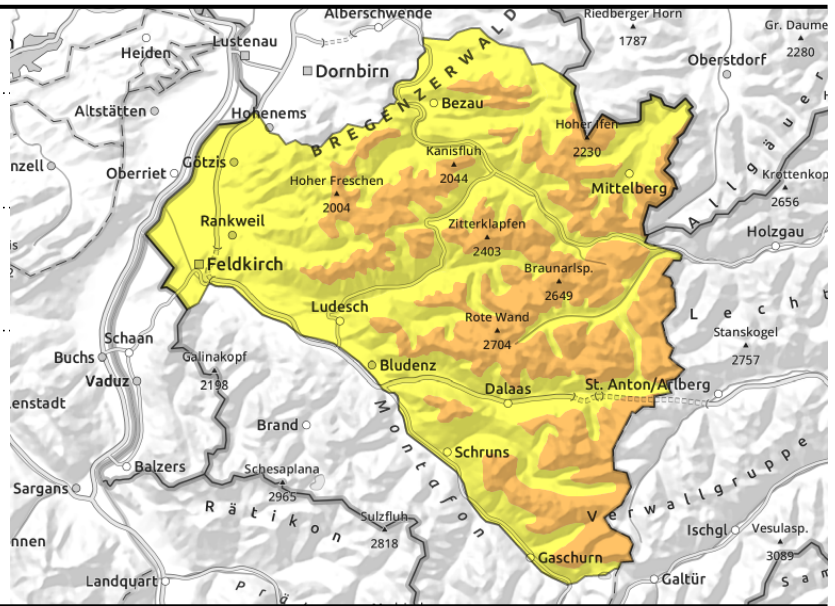
**Bregenzerwaldgebirge, Allgäuer Alpen, Lechquellengebirge, Lechtaler Alpen, Verwall**



fresh snowdrift accumulations, also distant from ridgelines



>2400 m blanketed weak layers are difficult to recognize



**Main danger: fresh snow and snowdrift accumulations and weak layers in the old snow**

Fresh snowdrifts are prone to triggering particularly in ridgeline zones, but also distant from ridgelines, wind-loaded gullies and bowls and behind abrupt discontinuities in the terrain. They tend to increase with ascending altitude. Medium slab avalanches can be triggered by one sole winter sports enthusiast. If they fracture to deeper layers they can grow to large size. Above 2400 m on steep shady slopes there are unfavourable layers in the old snowpack. Activities in backcountry demand experience in avalanche danger assessment on-site. In steep rocky terrain above 2400 m the fresh snow can trigger small to medium loose-snow avalanches naturally.

**Snowpack structure**

By this evening, 10-15 cm of fresh snow has fallen, in Bregenzerwald up to 10 cm. Westerly winds at strong-to-storm strength transported the new snow and loose old snow. The fresh snow and fresh drifts from recent days have been able to settle somewhat in the mild temperatures, and consolidate. Fresh snow and drifts lie atop loosely-packed and soft layers, on older snowdrift masses or atop melt-freeze encrusted surfaces and are often riddled with graupel. Bonding to the old snowpack deteriorates with ascending altitude. At high altitudes on steep shady slopes in particular, there are still weak layers deeply embedded inside the snowpack which are not visible to the naked eye.

**Weather**

Nocturnal hours: Skies will be slightly cloudy, westerly winds will slacken off. Monday: southerly foehn winds will alternate with cloudbanks as they pass through, accompanied by intervals of sunshine. Towards evening, clouds will become denser, a few snow showers are possible. Southerly foehn winds from the southwest will be brisk to strong.

**Outlook**

Cloudbanks passing through will alternate with sunny intervals on Tuesday. Some foehn wind influence. Towards evening, clouds will move in, light snowfall set in. Avalanche danger levels are not expected to change initially.

**Avalanche problems**



**Danger ratings**



**Expositions**



# Avalanche report for Monday, 16.01.2023

Translated by Jeffrey McCabe, [www.creativtrans.com](http://www.creativtrans.com)

## Avalanche problems



## Danger ratings



## Expositions

