

Amid fresh fallen snow and wind, considerable avalanche danger at high altitudes

	2200 m	Rätikon West, Rätikon Ost, Silvretta		
		Voralpenbereich		
	2000 m	Bregenzerwaldgebirge, Allgäuer Alpen, Lechquellengebirge, Lechtaler Alpen, Verwall		

Avalanche problems



Danger ratings



Expositions

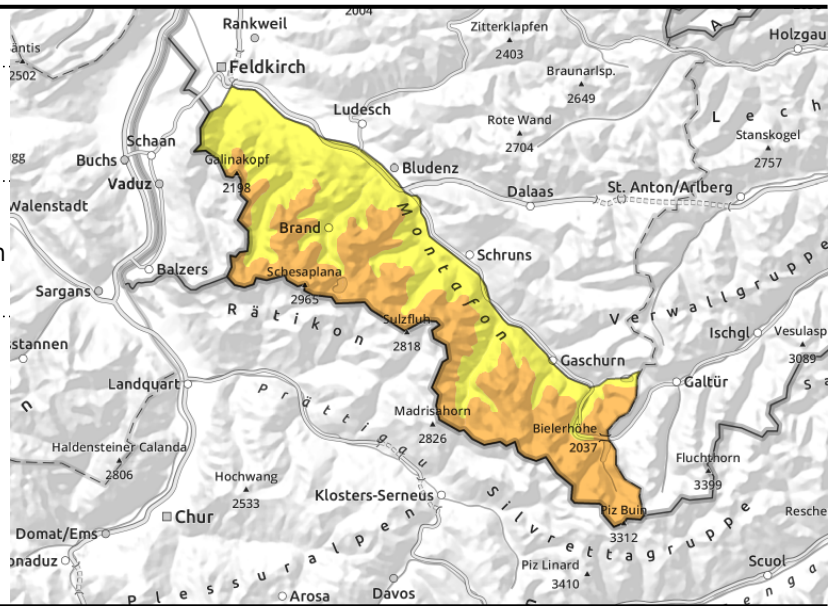


Rätikon West, Rätikon Ost, Silvretta



wind-loaded gullies, bowls, behind abrupt discontinuities in the terrain

>2400 m blanketed weak layers are difficult to recognize



Main danger: fresh snow and snowdrift accumulations and weak layers in the old snow

Fresh snow and snowdrifts are prone to triggering particularly in ridgeline zones, wind-loaded gullies and bowls and behind abrupt discontinuities in the terrain. They tend to increase with ascending altitude. Small to medium slab avalanches can be triggered by one sole winter sports enthusiast. Glide cracks and whumpf noises are indicators of imminent danger. If they fracture to deeper layers they can grow to large size. Above 2400 m on steep shady slopes there are unfavourable layers in the old snowpack. Activities in backcountry demand experience in avalanche danger assessment on-site. In steep rocky terrain above 2400 m the fresh snow can trigger small to medium loose-snow avalanches naturally. In isolated cases on steep grassy slopes and hillsides, small glide-snow slides are possible.

Snowpack structure

The latest bout of fresh snowfall was transported far-reachingly at high altitudes. The next cold front (with precipitation and strong-to-stormy westerly winds) will arrive in the morning. During the daytime another 10 cm of fresh snow is expected. Fresh snow and drifts lie deposited atop loose and soft layers or melt-freeze encrusted old snowpack surfaces. Bonding deteriorates with ascending altitude. At high altitudes on shady slopes in particular, there are still weak layers evident deeply embedded inside the snowpack fundament. These danger zones are not visible to the naked eye.

Weather

Nocturnal hours: Except in the Rätikon and Silvretta (where foehn impact will provide dry conditions) rainfall is possible in the latter part of the night up to 2200 m. Sunday: Rainfall to 2200 m during the night, possibly foehn-impact in Rätikon and Silvretta. Even though dry conditions may reign, snowfall is possible at any time through the cold front (snowfall level descending swiftly to below 1000 m). At 2000 m: from +2 to -6 degrees. Strong-to-stormy westerly winds, slackening off in the afternoon and shifting to northwesterly.

Avalanche problems



Danger ratings



Expositions



Avalanche report for **Sunday, 15.01.2023**

Outlook

As a result of southerly foehn winds,, alternating cloudbanks on Monday and intermittent sunshine. Towards evening, cloud cover will intensify, a few snow showers are possible. High-altitude winds will be brisk to strong from the southwest. Avalanche danger levels are not expected to change to begin with.

Avalanche problems



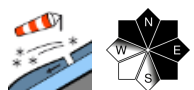
Danger ratings



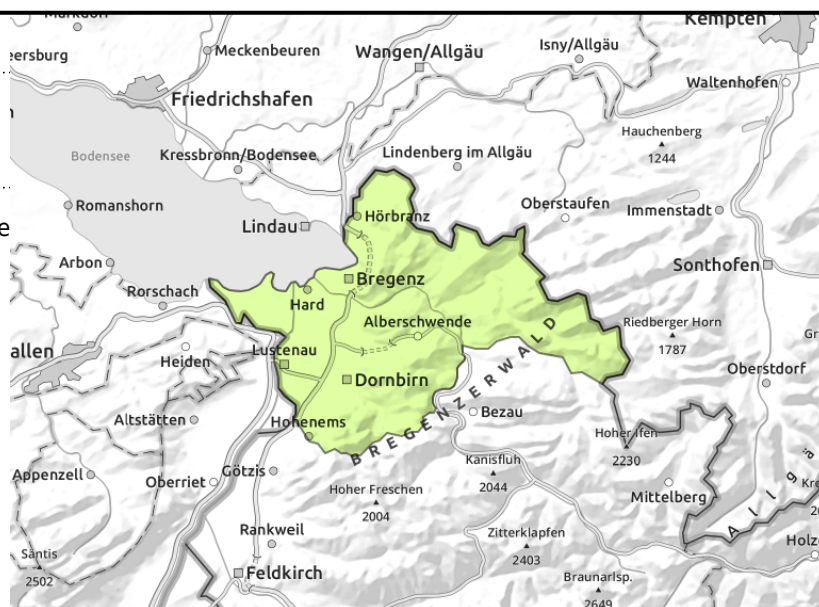
Expositions



Voralpenbereich



small snowdrifts in high-altitude ridgeline and summit zones



Small snowdrift accumulations due to fresh fallen snow and winds

The small amount of fresh snow still brings only low avalanche danger. As a result of fresh snow and strong westerly winds, small snowdrift accumulations will be generated over the course of the day.

Snowpack structure

Intermittent rainfall during the night up to 2200 m. The next cold front (with precipitation and strong-to-stormy westerly winds) will arrive in the morning. During the daytime another 15 cm of fresh snow is expected. The snowfall level will quickly descend to low lying areas. In higher ridgeline and summit areas the latest bout of fresh snow will be transported, small snowdrift accumulations will be generated over the course of the day. There is little snow on the ground at low altitudes.

Weather

Nocturnal hours: Except in the Rätikon and Silvretta (where foehn impact will provide dry conditions) rainfall is possible in the latter part of the night up to 2200 m. Sunday: Rainfall to 2200 m during the night, possibly foehn-impact in Rätikon and Silvretta. Even though dry conditions may reign, snowfall is possible at any time through the cold front (snowfall level descending swiftly to below 1000 m). At 2000 m: from +2 to -6 degrees. Strong-to-stormy westerly winds, slackening off in the afternoon and shifting to northwesterly.

Outlook

As a result of southerly foehn winds,, alternating cloudbanks on Monday and intermittent sunshine. Towards evening, cloud cover will intensify, a few snow showers are possible. High-altitude winds will be brisk to strong from the southwest. Avalanche danger levels are not expected to change to begin with.

Avalanche problems



Danger ratings



Expositions



Bregenzerwaldgebirge, Allgäuer Alpen, Lechquellengebirge, Lechtaler Alpen, Verwall



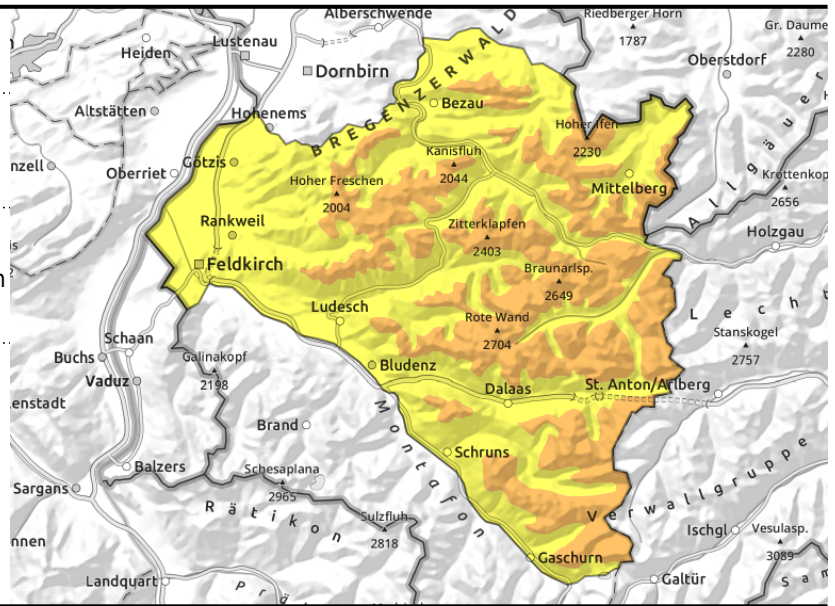
2000 m



wind-loaded gullies, bowls, behind abrupt discontinuities in the terrain



>2400 m blanketed weak layers are difficult to recognize



Main danger: fresh snow and snowdrift accumulations and weak layers in the old snow

Snowpack structure

Fresh snow and snowdrifts are prone to triggering particularly in ridgeline zones, wind-loaded gullies and bowls and behind abrupt discontinuities in the terrain. They tend to increase with ascending altitude. Small to medium slab avalanches can be triggered by one sole winter sports enthusiast. Glide cracks and whumpf noises are indicators of imminent danger. If they fracture to deeper layers they can grow to large size. Above 2400 m on steep shady slopes there are unfavourable layers in the old snowpack. Activities in backcountry demand experience in avalanche danger assessment on-site. In steep rocky terrain above 2400 m the fresh snow can trigger small to medium loose-snow avalanches naturally. In isolated cases on steep grassy slopes and hillsides, small glide-snow slides are possible.

Weather

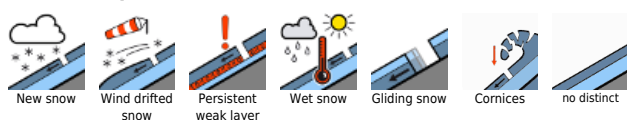
Nocturnal hours: Except in the Rätikon and Silvretta (where foehn impact will provide dry conditions) rainfall is possible in the latter part of the night up to 2200 m. Sunday: Rainfall to 2200 m during the night, possibly foehn-impact in Rätikon and Silvretta. Even though dry conditions may reign, snowfall is possible at any time through the cold front (snowfall level descending swiftly to below 1000 m). At 2000 m: from +2 to -6 degrees. Strong-to-stormy westerly winds, slackening off in the afternoon and shifting to northwesterly.

Outlook

As a result of southerly foehn winds,, alternating cloudbanks on Monday and intermittent sunshine. Towards evening, cloud cover will intensify, a few snow showers are possible. High-altitude winds will be brisk to strong from the southwest. Avalanche danger levels are not expected to change to begin with.

Translated by Jeffrey McCabe, www.creativtrans.com

Avalanche problems



Danger ratings



Expositions

