

## UPDATE: Considerable avalanche danger at high altitudes due to fresh snow and wind

	2200 m	Rätikon West, Rätikon Ost, Silvretta, Verwall											
		Voralpenbereich											
	2000 m	Bregenzerwaldgebirge, Allgäuer Alpen, Lechquellengebirge, Lechtaler Alpen											

### Avalanche problems



### Danger ratings



### Expositions



**Rätikon West, Rätikon Ost, Silvretta, Verwall**



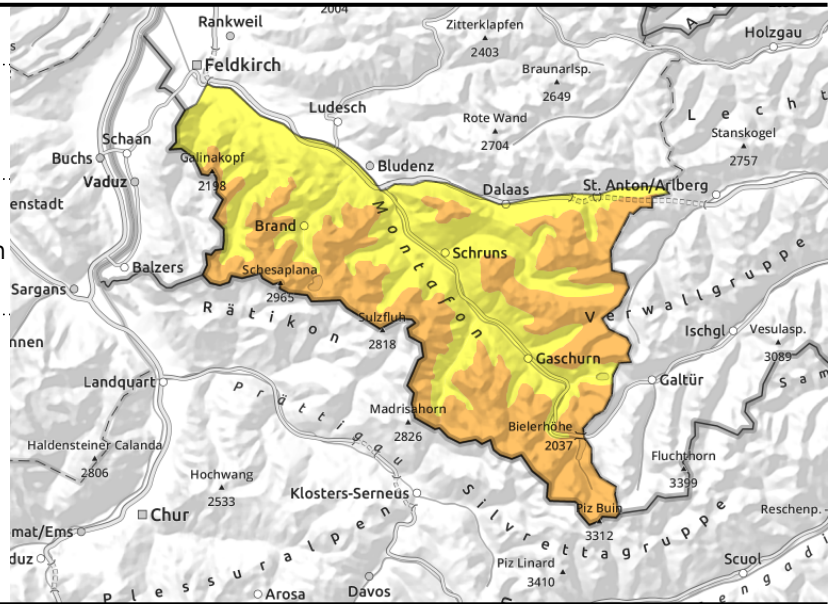
2200 m



wind-loaded gullies, bowls, behind abrupt discontinuities in the terrain



>2400 m blanketed weak old snowpack layers difficult to recognize



**Main danger: fresh snow and snowdrift accumulations and weak layers in the old snow**

Fresh snow and snowdrifts are prone to triggering particularly in ridgeline zones, wind-loaded gullies and bowls and behind abrupt discontinuities in the terrain. They tend to increase with ascending altitude. Small to medium slab avalanches can be triggered by one sole winter sports enthusiast. Glide cracks and whumpf noises are indicators of imminent danger. If they fracture to deeper layers they can grow to large size. Above 2400 m on steep shady slopes there are unfavourable layers in the old snowpack. Activities in backcountry demand experience in avalanche danger assessment on-site. In steep rocky terrain above 2400 m the fresh snow can trigger small to medium loose-snow avalanches naturally. In isolated cases on steep grassy slopes and hillsides, small glide-snow slides are possible.

**Snowpack structure**

By early morning today there was 10 cm of fresh snow registered. This batch plus the snowfall from the last few days was transported, particularly at high altitudes. The fresh snow and snowdrifts have already settled and further consolidated. They lie deposited atop loose and soft layers or melt-freeze encrusted old snowpack surfaces. Bonding deteriorates with ascending altitude. At high altitudes on shady slopes in particular, there are still weak layers evident deeply embedded inside the snowpack fundament. These danger zones are not visible to the naked eye.

**Weather**

Saturday: an extremely compact bank of clouds is graying the sky, the summits are mostly free. It is expected to remain dry until this evening, not until the following night is rainfall expected to reach over 2000 m. Brisk westerly winds, stronger in the afternoon; in the foehn-impacted lanes southerly foehn wind will prevail.

**Outlook**

The nighttime precipitation will recede on Sunday, it will remain dry until past midday. Then cloud cover will move in and snowfall can be expected in all regions. The snowfall level will descend from

**Avalanche problems**



**Danger ratings**



**Expositions**



## Avalanche report for **Saturday, 14.01.2023**

over 2000 m to below 1000 m. As a result of fresh snow and wind, avalanche danger levels are expected to increase on Sunday.

### Avalanche problems



[www.vorarlberg.at/lawine](http://www.vorarlberg.at/lawine)

### Danger ratings

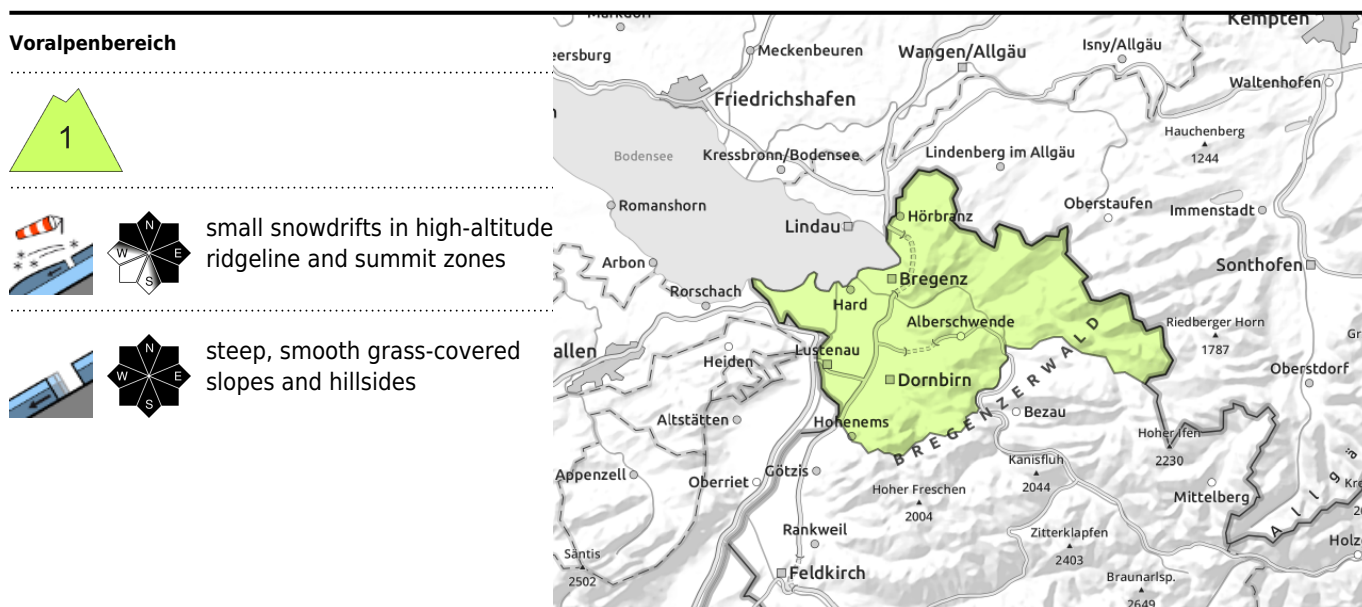


[lawinenwarndienst@lwz-vorarlberg.at](mailto:lawinenwarndienst@lwz-vorarlberg.at)

### Expositions



© Landeswarnzentrale Vorarlberg +43(0)5574 201-4560



## Despite some fresh snow, only low avalanche danger

The small amount of fresh snow still brings only low avalanche danger. Small glide-snow avalanches and slides are possible on steep, smooth grass-covered slopes above all else.

### Snowpack structure

During the night the snowfall level will descend from 1100 to 800 m and up to 10 cm of fresh snow is anticipated. This batch plus the fresh snow from recent days was, and is still being transported. Small snowdrift accumulations will be generated.

### Weather

In the nocturnal hours: gusty westerly winds, intermittent snowfall in the northern mountain regions, the snowfall level descending gradually to nearly 800 m. In the latter part of the night dry conditions will reign. Saturday: compact clouds will make for gray skies but the peaks will remain clear. It is expected to remain dry until evening, not until the following night is rainfall expected to reach over 2000 m. Brisk westerly winds, stronger in the afternoon.

### Outlook

The nighttime precipitation will recede on Sunday, it will remain dry until past midday. Then cloud cover will move in and snowfall can be expected in all regions. The snowfall level will descend from over 2000 m to below 1000 m. As a result of fresh snow and wind, avalanche danger levels are expected to increase on Sunday.

#### Avalanche problems



#### Danger ratings



#### Expositions



**Bregenzerwaldgebirge, Allgäuer Alpen, Lechquellengebirge, Lechtaler Alpen**



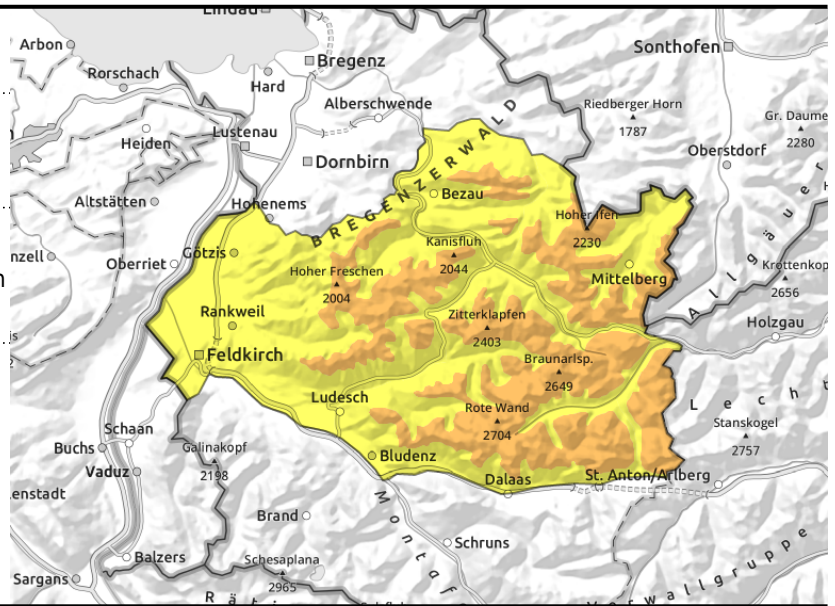
2000 m



ridgeline zones, gullies, bowls, behind abrupt discontinuities in the terrain



>2400 m blanketed weak old snowpack layers difficult to recognize



**Main danger: fresh snow and snowdrift accumulations and weak layers in the old snow**

Fresh snow and snowdrifts are prone to triggering particularly in ridgeline zones, wind-loaded gullies and bowls and behind abrupt discontinuities in the terrain. They tend to increase with ascending altitude. Small to medium slab avalanches can be triggered by one sole winter sports enthusiast. From steep rocky terrain, small-to-medium loose-snow avalanches can trigger naturally. In isolated cases, small glide-snow releases are possible on steep grass-covered slopes and hillsides.

**Snowpack structure**

By early morning today there was 15 cm of fresh snow registered widespread. This batch plus the snowfall from the last few days was transported, particularly at high altitudes. The fresh snow and snowdrifts have already settled and further consolidated. They lie deposited atop loose and soft layers or melt-freeze encrusted old snowpack surfaces. Bonding deteriorates with ascending altitude. At high altitudes on shady slopes in particular, there are still weak layers evident deeply embedded inside the snowpack fundament. These danger zones are not visible to the naked eye.

**Weather**

Saturday: an extremely compact bank of clouds is graying the sky, the summits are mostly free. It is expected to remain dry until this evening, not until the following night is rainfall expected to reach over 2000 m. Brisk westerly winds, stronger in the afternoon; in the foehn-impacted lanes southerly foehn wind will prevail.

**Outlook**

The nighttime precipitation will recede on Sunday, it will remain dry until past midday. Then cloud cover will move in and snowfall can be expected in all regions. The snowfall level will descend from over 2000 m to below 1000 m. As a result of fresh snow and wind, avalanche danger levels are expected to increase on Sunday.

Translated by Jeffrey McCabe, [www.creativtrans.com](http://www.creativtrans.com)

**Avalanche problems**



**Danger ratings**



**Expositions**

