

Frequently considerable avalanche danger at high altitudes

	2200 m	Rätikon West, Rätikon Ost, Silvretta, Verwall, Lechquellengebirge, Lechtaler Alpen	
		Voralpenbereich	
	2000 m	Bregenzerwaldgebirge, Allgäuer Alpen	

Avalanche problems



Danger ratings



Expositions



Avalanche report for Thursday, 12.01.2023

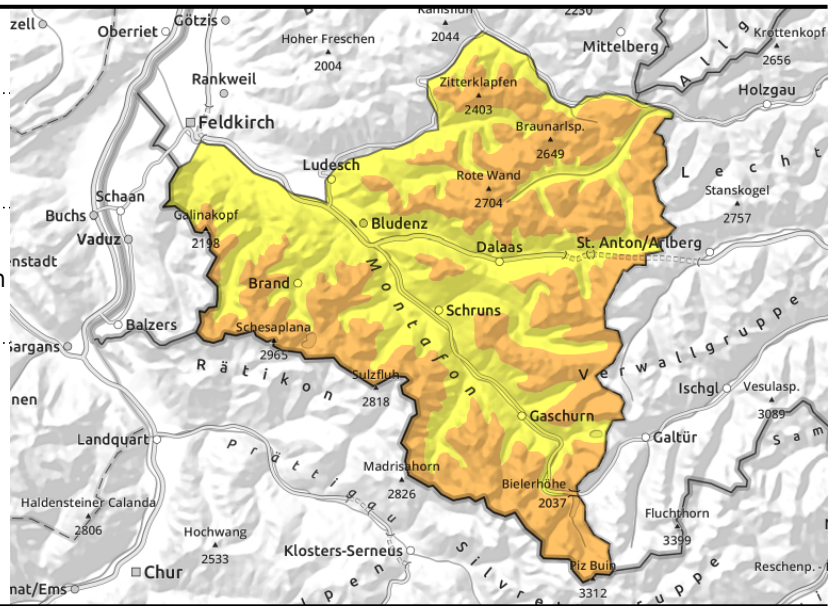
Rätikon West, Rätikon Ost, Silvretta, Verwall, Lechquellengebirge, Lechtaler Alpen



wind-loaded gullies, bowls, behind abrupt discontinuities in the terrain



>2400 m blanketed weak layers are difficult to recognize



Main danger: fresh snowdrift accumulations and weak layers in the old snow

Fresh snow and snowdrifts are prone to triggering particularly in ridgeline zones, wind-loaded gullies and bowls and behind abrupt discontinuities in the terrain. They tend to increase with ascending altitude. Small to medium slab avalanches can be triggered by one sole winter sports enthusiast. If they fracture to deeper layers they can grow to large size. Also, above 2400 m on steep shady slopes there are unfavourable layers in the old snowpack. In very steep terrain and heavily wind-loaded zones, small slab avalanches and increasingly frequent slides can trigger naturally.

Snowpack structure

The latest batch of fresh fallen snow (10 cm) will be (and was) transported far-reachingly at high altitudes. Fresh snow and drifts are prone to triggering. They lie deposited atop loose and soft layers or melt-freeze encrusted old snowpack surfaces. Bonding deteriorates with ascending altitude. At high altitudes on shady slopes in particular, there are still weak layers evident deeply embedded inside the snowpack fundament. These danger zones are not visible to the naked eye.

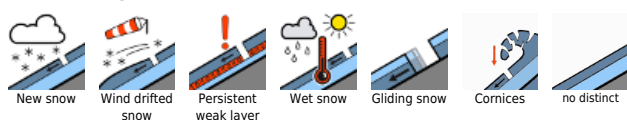
Weather

Nocturnal hours: initially gray skies, light to moderate precipitation (snowfall above 1000 m). In the latter part of the night, precipitation will ease, skies will clear. Brisk westerly winds will be blowing.
Thursday: dry weather, adequate visibility. Only around midday is a bit of snowfall possible. Still quite windy. At 2000 m: -5 to -2 degrees. Strong to stormy westerly winds.

Outlook

As a result of strong-to-stormy westerly winds, cloud cover will dominate. Rainfall/snowfall will focus on the northern mountain regions. Strong winds will persist. Avalanche danger levels are not expected to change significantly.

Avalanche problems

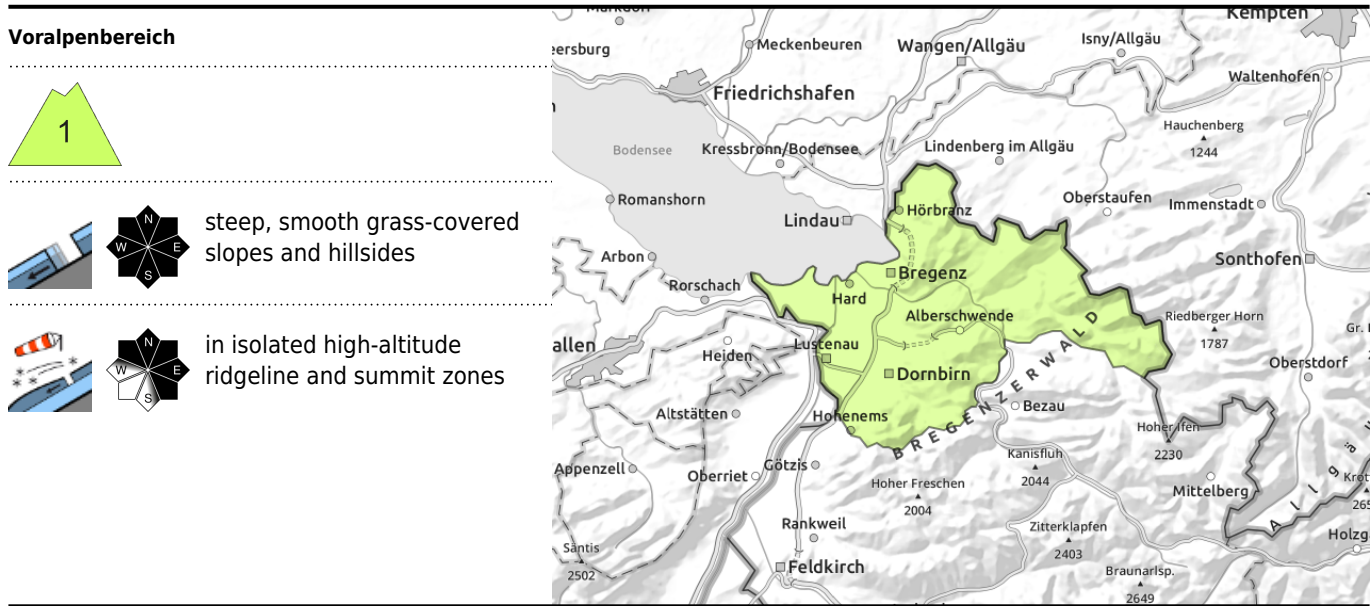


Danger ratings



Expositions





Despite some fresh snow, only low avalanche danger

The small amount of fresh snow still brings only low avalanche danger. Small glide-snow avalanches and slides are possible on steep, smooth grass-covered slopes above all else.

Snowpack structure

During the night above 1100 m, up to 10 cm of fresh snow is expected, falling mostly on bare ground or snowpack fragments. In higher ridgeline and summit zones the latest fresh snowfall was transported. Thus, small, fresh snowdrift accumulations were generated.

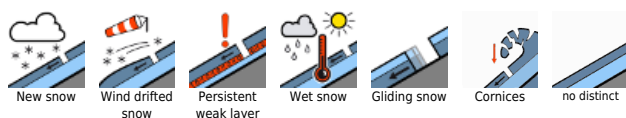
Weather

Nocturnal hours: initially gray skies, light to moderate precipitation (snowfall above 1000 m). In the latter part of the night, precipitation will ease, skies will clear. Brisk westerly winds will be blowing.
Thursday: dry weather, adequate visibility. Only around midday is a bit of snowfall possible. Still quite windy. At 2000 m: -5 to -2 degrees. Strong to stormy westerly winds.

Outlook

As a result of strong-to-stormy westerly winds, cloud cover will dominate. Rainfall/snowfall will focus on the northern mountain regions. Strong winds will persist. Avalanche danger levels could rise somewhat.

Avalanche problems



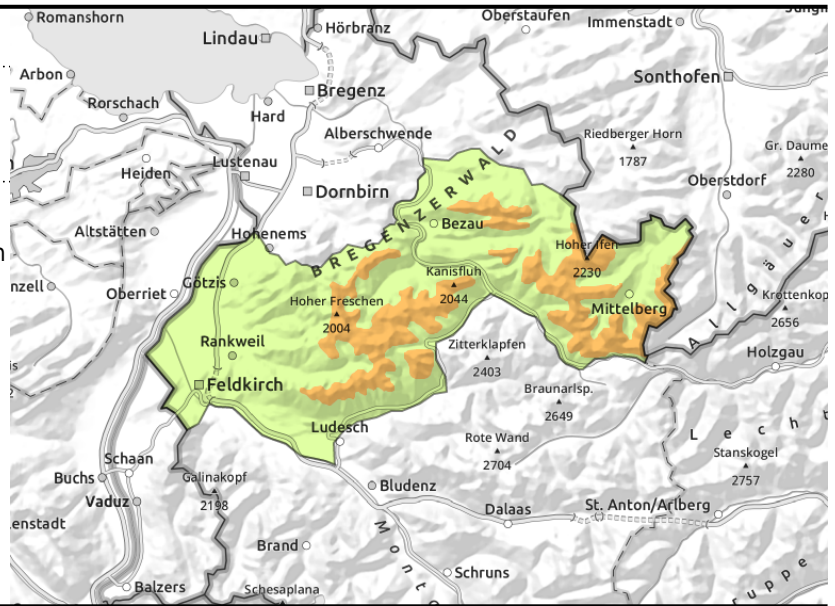
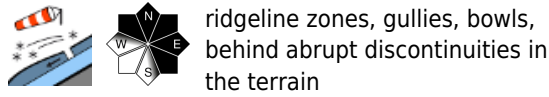
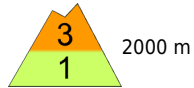
Danger ratings



Expositions



Bregenzerwaldgebirge, Allgäuer Alpen



Heed snowdrifts at high altitudes

Fresh snow and snowdrifts are prone to triggering particularly in ridgeline zones, wind-loaded gullies and bowls and behind abrupt discontinuities in the terrain. They tend to increase with ascending altitude. Small to medium slab avalanches can be triggered by one sole winter sports enthusiast. As a result of daytime warming and in areas where there has been rain impact, slides and small loose-snow avalanches and - on steep grass-covered slopes - small glide-snow avalanches are possible.

Snowpack structure

Up to 10 cm of fresh snow was and will be transported far-reachingly. Fresh snow and drifts from recent days have settled well and consolidated. They lie deposited atop soft and loose layers or on melt-freeze encrusted old snowpack surfaces. Bonding is only moderate to poor and the proneness to triggering is increasing. Below 1800 m, the snow fell on bare, often warm, ground.

Weather

Nocturnal hours: initially gray skies, light to moderate precipitation (snowfall above 1000 m). In the latter part of the night, precipitation will ease, skies will clear. Brisk westerly winds will be blowing.
Thursday: dry weather, adequate visibility. Only around midday is a bit of snowfall possible. Still quite windy. At 2000 m: -5 to -2 degrees. Strong to stormy westerly winds.

Outlook

As a result of strong-to-stormy westerly winds, cloud cover will dominate. Rainfall/snowfall will focus on the northern mountain regions. Strong winds will persist. Avalanche danger levels could increase somewhat.

Translated by Jeffrey McCabe, www.creativtrans.com

Avalanche problems



Danger ratings



Expositions

