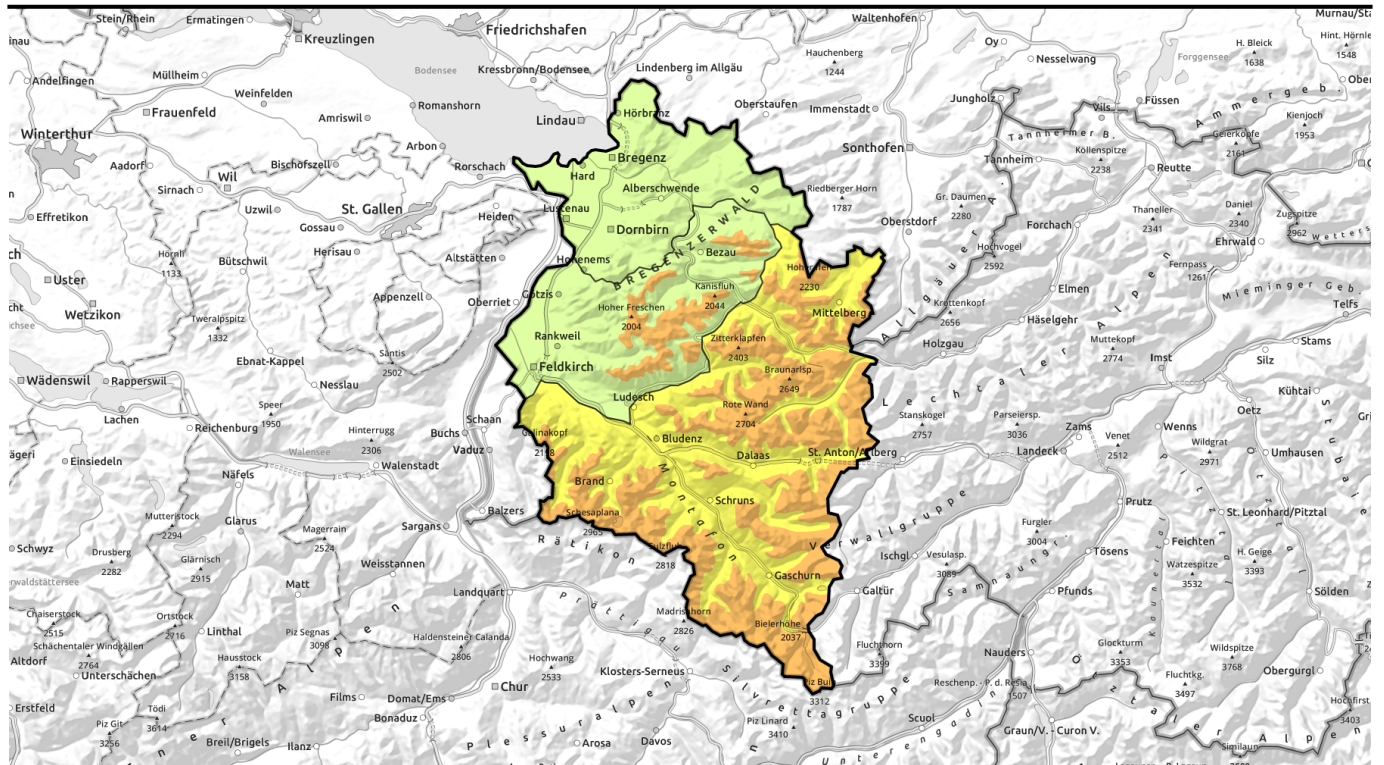


Avalanche report for **Tuesday, 10.01.2023**



UPDATE: widespread increase in avalanche danger due to fresh snow and wind

	1800 m	Rätikon West, Rätikon Ost, Silvretta, Verwall, Lechquellengebirge, Lechtaler Alpen, Allgäuer Alpen	 	
		Voralpenbereich		
	1800 m	Bregenzerwaldgebirge	 	

Avalanche problems



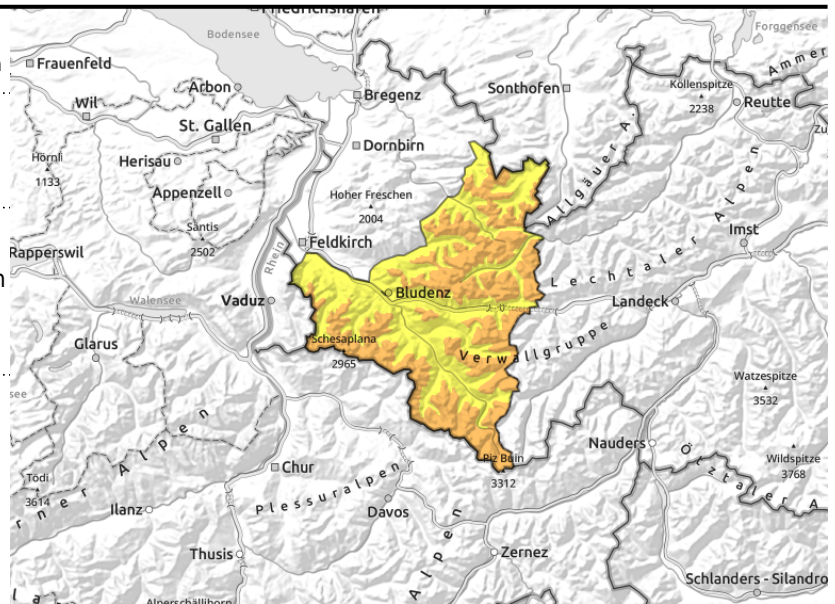
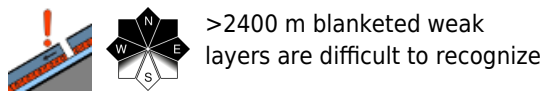
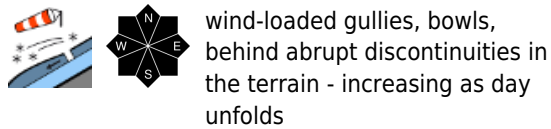
Danger ratings



Expositions



Rätikon West, Rätikon Ost, Silvretta, Verwall, Lechquellengebirge, Lechtaler Alpen, Allgäuer Alpen



Main danger: fresh snowdrift accumulations and weak layers in the old snow

Fresh snow and snowdrifts are prone to triggering particularly in ridgeline zones, wind-loaded gullies and bowls and behind abrupt discontinuities in the terrain. They tend to increase with ascending altitude. Small to medium slab avalanches can be triggered by one sole winter sports enthusiast. If they fracture to deeper layers they can grow to large size. Also, above 2400 m on steep shady slopes there are unfavourable layers in the old snowpack. In very steep terrain and heavily wind-loaded zones, small slab avalanches and increasingly frequent slides can trigger naturally.

Snowpack structure

By early morning today there was 20-40 cm of fresh snow registered which at high altitudes was intensively transported. Fresh snow and drifts are prone to triggering. They lie deposited atop loose and soft layers or melt-freeze encrusted old snowpack surfaces. Bonding deteriorates with ascending altitude. At high altitudes on shady slopes in particular, there are still weak layers evident deeply embedded inside the snowpack fundament. These danger zones are not visible to the naked eye. Below 1800 m the snow is often falling on bare ground.

Weather

Tuesday: Compact clouds during the morning, snow showers and correspondingly poor visibility. In the afternoon the snow showers will taper off, the clouds disperse, temperatures start to rise. Strong winds will make it seem still cold. At 2000 m: -7 degrees at midday. Very gusty W/NW winds.

Outlook

On Wednesday, clouds will disperse, it will become intermittently sunny. Amid strong westerly winds, temperatures will rise. The zero-degree level will be temporarily at about 2000 m. Towards evening, snowfall will set in from the northwest. Also: strong to stormy westerly winds. Avalanche danger levels could rise further.

Avalanche problems



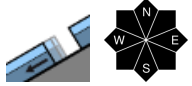
Danger ratings



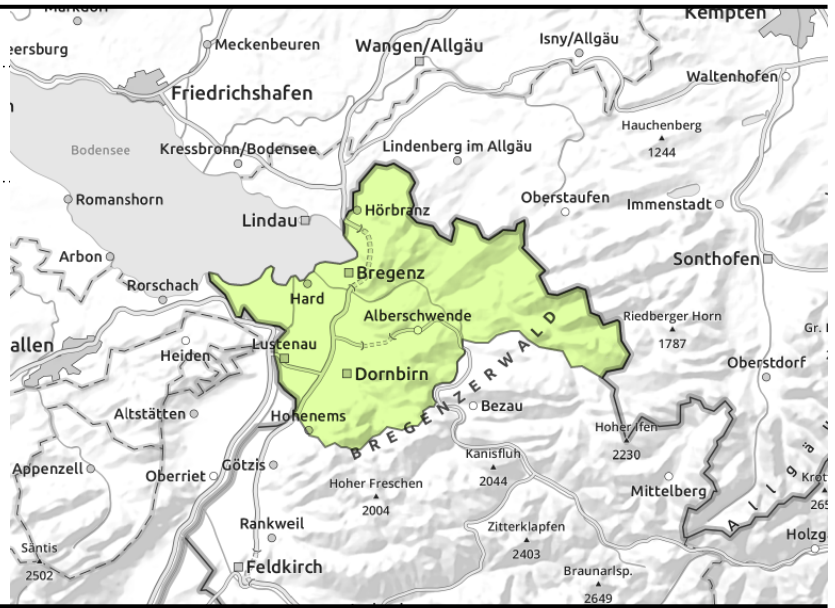
Expositions



Voralpenbereich



steep, smooth grass-covered slopes and hillsides



Despite some fresh snow, only low avalanche danger

The small amount of fresh snow still brings only low avalanche danger. Small glide-snow avalanches and slides are possible on steep, smooth grass-covered slopes above all else.

Snowpack structure

Up to 20 cm of fresh snow was registered by early morning today, falling mostly on bare ground or residual snow fragments. The minor snowpack has receded further in the last few days.

Weather

Tuesday: Compact clouds during the morning, snow showers and correspondingly poor visibility. In the afternoon the snow showers will taper off, the clouds disperse, temperatures start to rise. Strong winds will make it seem still cold. At 2000 m: -7 degrees at midday. Very gusty W/NW winds.

Outlook

On Wednesday, clouds will disperse, it will become intermittently sunny. Amid strong westerly winds, temperatures will rise. The zero-degree level will be temporarily at about 2000 m. Towards evening, snowfall will set in from the northwest. Also: strong to stormy westerly winds. Avalanche danger levels could rise further.

Avalanche problems



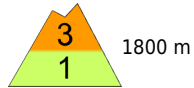
Danger ratings



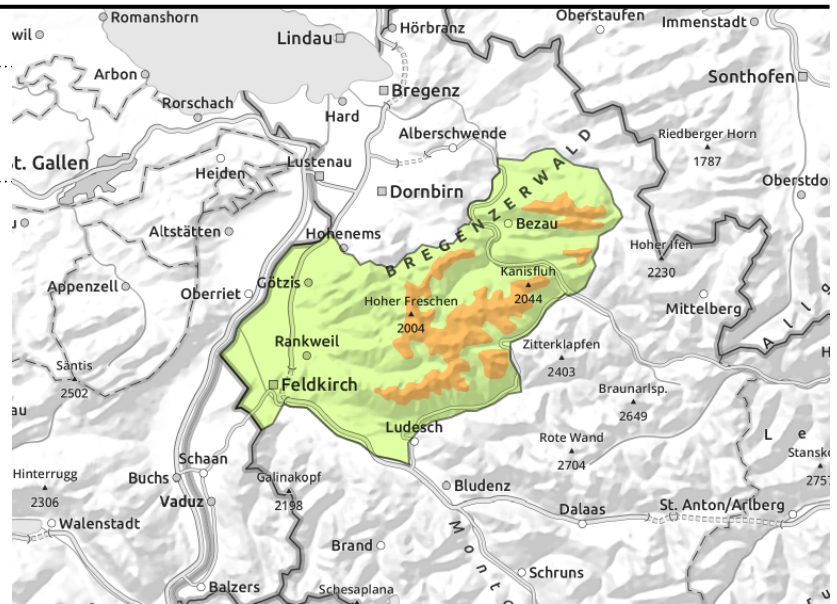
Expositions



Bregenzerwaldgebirge



in ridgeline terrain, gullies, bowls and behind abrupt discontinuities in the terrain



Heed snowdrift accumulations increasingly in high altitude terrain

Fresh snow and snowdrifts are prone to triggering particularly in ridgeline zones, wind-loaded gullies and bowls and behind abrupt discontinuities in the terrain. They tend to increase with ascending altitude. Small to medium slab avalanches can be triggered by one sole winter sports enthusiast. In very steep terrain and heavily wind-loaded zones, small slab avalanches and increasingly frequent slides can trigger naturally.

Snowpack structure

By early morning today there was 20-40 cm of fresh snow registered which at high altitudes was intensively transported. Fresh snow and drifts are prone to triggering. They lie deposited atop loose and soft layers or melt-freeze encrusted old snowpack surfaces. Bonding deteriorates with ascending altitude. Below 1800 m the snow is often falling on bare ground.

Weather

Tuesday: Compact clouds during the morning, snow showers and correspondingly poor visibility. In the afternoon the snow showers will taper off, the clouds disperse, temperatures start to rise. Strong winds will make it seem still cold. At 2000 m: -7 degrees at midday. Very gusty W/NW winds.

Outlook

On Wednesday, clouds will disperse, it will become intermittently sunny. Amid strong westerly winds, temperatures will rise. The zero-degree level will be temporarily at about 2000 m. Towards evening, snowfall will set in from the northwest. Also: strong to stormy westerly winds. Avalanche danger levels could rise further.

Translated by Jeffrey McCabe, www.creativtrans.com

Avalanche problems



Danger ratings



Expositions

