

Increase in avalanche danger due to fresh snow and winds at high altitudes

<p>2000 m</p>	<p>Rätikon West, Rätikon Ost, Silvretta, Verwall, Lechquellengebirge, Lechtaler Alpen, Allgäuer Alpen</p>	
	<p>Voralpenbereich</p>	
<p>1800 m</p>	<p>Bregenzeralpgebirge</p>	

<p>Avalanche problems</p>	<p>Danger ratings</p>	<p>Expositions</p>

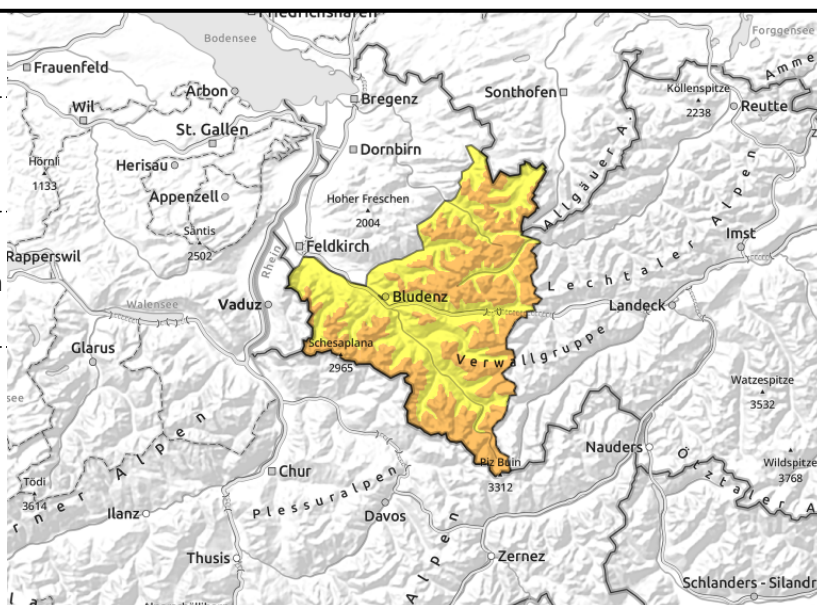
Rätikon West, Rätikon Ost, Silvretta, Verwall, Lechquellengebirge, Lechtaler Alpen, Allgäuer Alpen



wind-loaded gullies, bowls, behind abrupt discontinuities in the terrain



>2400 m blanketed weak layers are difficult to recognize



Main danger: fresh snowdrift accumulations and weak layers in the old snow

Moderate avalanche danger prevails at high altitudes. Fresh and older drifts are sometimes prone to triggering on shady slopes on wind-protected ridgeline slopes, and behind abrupt discontinuities in the terrain. The tend to increase with ascending altitude. Also, above 2400 m on steep shady slopes there are unfavourable layers in the old snowpack. As a result of daytime warming and solar radiation, small-to-medium wet-snow and glide-snow avalanches are possible, particularly on sunny slopes.

Snowpack structure

By Tuesday evening, 20-40 cm of fresh snow is anticipated over widespread areas. This will be transported over far-reaching areas at high altitudes. Fresh snow and freshly generated snowdrift accumulations are prone to triggering. They lie deposited atop loose and soft layers or melt-freeze encrusted old snowpack surfaces. Bonding deteriorates with ascending altitude. At high altitudes on shady slopes in particular, there are still weak layers evident deeply embedded inside the snowpack fundament. These danger zones are not visible to the naked eye. Below 1800 m the snow is often falling on bare ground.

Weather

Nocturnal hours: skies will remain gray, snowfall in the mountains (10-30 cm possible by early morning). At high altitudes the fresh snow will be intensively transported. Tuesday: a few light snow showers will pass through, the clouds will disperse slightly in the cold air. In the afternoon, skies will again become gray, visibility deteriorate. At 2000 m: -7 degrees at midday. Moderate to brisk N/NW winds at high altitude.

Outlook

On Wednesday, clouds will disperse, it will become intermittently sunny. Amid strong westerly winds, temperatures will rise. The zero-degree level will be temporarily at about 2100 m. Towards evening, snowfall will set in from the northwest. Also: strong to stormy westerly winds. Avalanche danger levels could rise further.

Avalanche problems



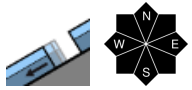
Danger ratings



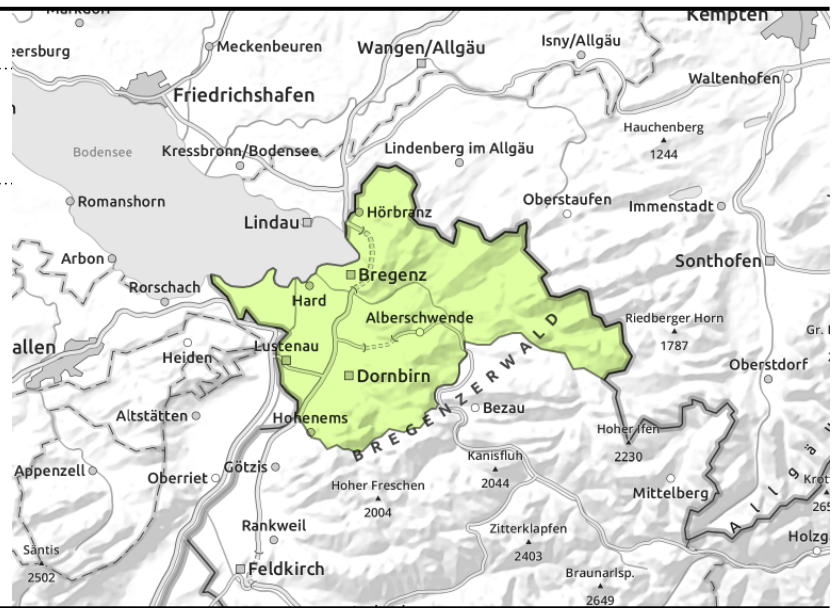
Expositions



Voralpenbereich



steep, smooth grass-covered slopes and hillsides



Despite some fresh snow, only low avalanche danger

The small amount of fresh snow still brings only low avalanche danger. Small glide-snow avalanches and slides are possible on steep, smooth grass-covered slopes above all else.

Snowpack structure

Up to 30 cm of fresh snow is anticipated, falling mostly on bare ground or residual snow fragments. The minor snowpack has receded further in the last few days.

Weather

Nocturnal hours: skies will remain gray, snowfall in the mountains (10-30 cm possible by early morning). At high altitudes the fresh snow will be intensively transported. Tuesday: a few light snow showers will pass through, the clouds will disperse slightly in the cold air. In the afternoon, skies will again become gray, visibility deteriorate. At 2000 m: -7 degrees at midday. Moderate to brisk N/NW winds at high altitude.

Outlook

On Wednesday, clouds will disperse, it will become intermittently sunny. Amid strong westerly winds, temperatures will rise. The zero-degree level will be temporarily at about 2100 m. Towards evening, snowfall will set in from the northwest. Also: strong to stormy westerly winds. Avalanche danger levels could rise further.

Avalanche problems

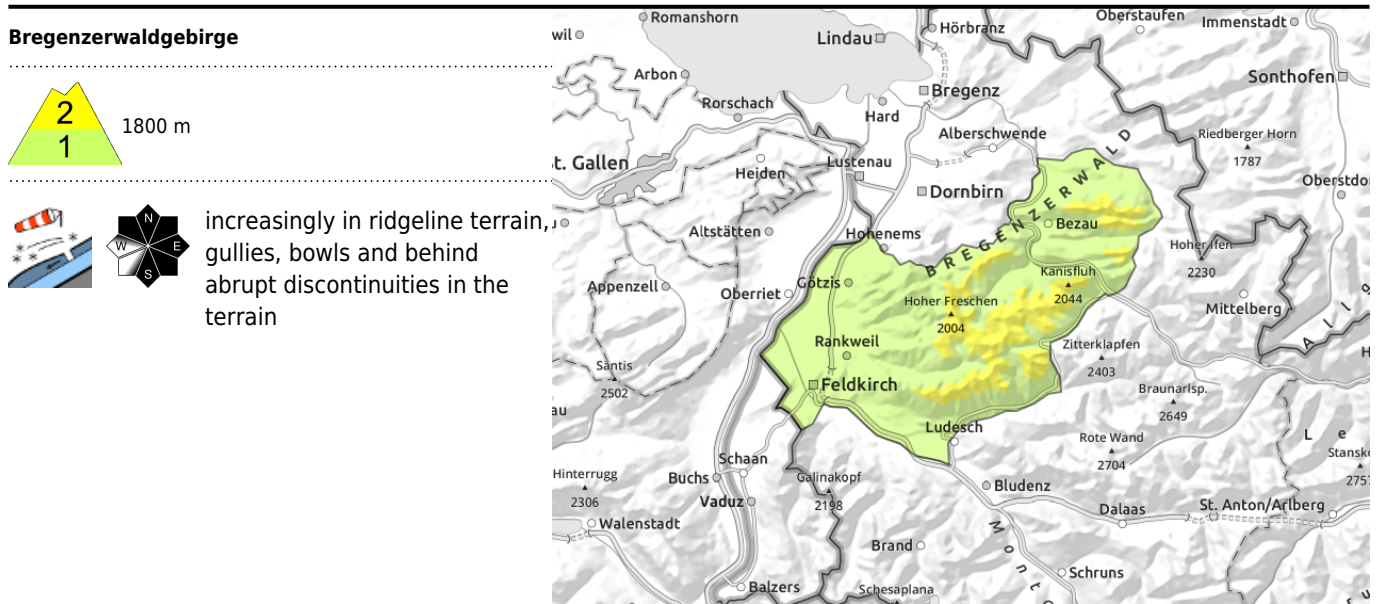


Danger ratings



Expositions





Heed snowdrift accumulations increasingly in high altitude terrain

Fresh snow and freshly generated snowdrift accumulations, particularly in ridgeline terrain and in wind-loaded gullies and bowls as well as behind abrupt discontinuities in the terrain are prone to triggering. Such danger zones increase with ascending altitude and as the snowfall continues and wind persists will increase further. Small-to-medium slab avalanches can release from one sole winter sports enthusiast. Naturally triggered small slab avalanches are possible on very steep slopes and in heavily wind-loaded zones, as well as slides and small loose-snow avalanches.

Snowpack structure

By Tuesday evening, 20-40 cm of fresh snow is anticipated over widespread areas. This will be transported over far-reaching areas at high altitudes. Fresh snow and freshly generated snowdrift accumulations are prone to triggering. They lie deposited atop loose and soft layers or melt-freeze encrusted old snowpack surfaces. Bonding deteriorates with ascending altitude. At high altitudes on shady slopes in particular, there are still weak layers evident deeply embedded inside the snowpack fundament. These danger zones are not visible to the naked eye. Below 1800 m the snow is often falling on bare ground.

Weather

Nocturnal hours: skies will remain gray, snowfall in the mountains (10-30 cm possible by early morning). At high altitudes the fresh snow will be intensively transported. Tuesday: a few light snow showers will pass through, the clouds will disperse slightly in the cold air. In the afternoon, skies will again become gray, visibility deteriorate. At 2000 m: -7 degrees at midday. Moderate to brisk N/NW winds at high altitude.

Outlook

On Wednesday, clouds will disperse, it will become intermittently sunny. Amid strong westerly winds, temperatures will rise. The zero-degree level will be temporarily at about 2100 m. Towards evening, snowfall will set in from the northwest. Also: strong to stormy westerly winds. Avalanche danger levels could rise further.

Translated by Jeffrey McCabe, www.creativtrans.com

Avalanche problems



Danger ratings



Expositions

