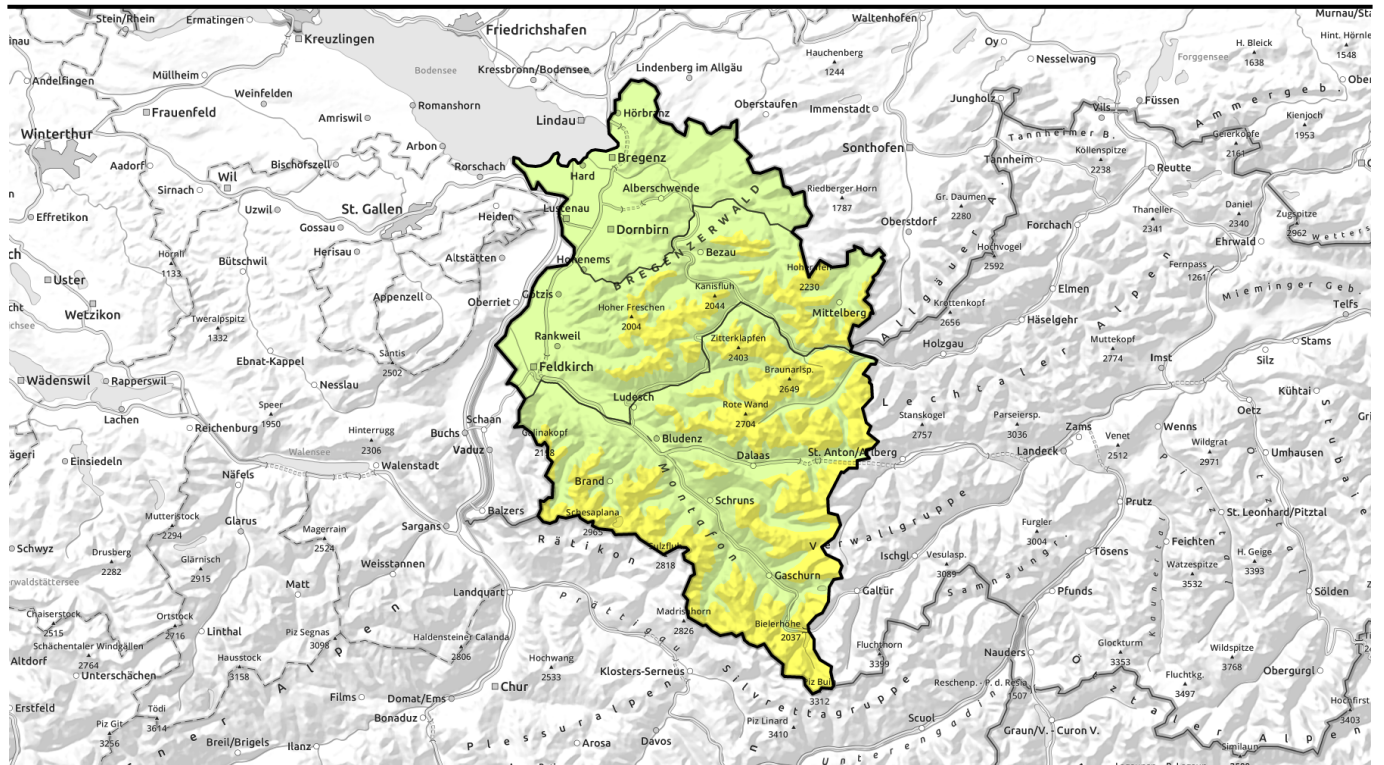


Avalanche report for Monday, 09.01.2023



Increase in avalanche danger due to fresh snow and winds at high altitudes

	2000 m	Rätikon West, Rätikon Ost, Silvretta, Verwall, Lechquellengebirge, Lechtaler Alpen				
		Voralpenbereich				
	2000 m	Bregenzerwaldgebirge, Allgäuer Alpen				

Avalanche problems



Danger ratings



Expositions



Avalanche report for Monday, 09.01.2023

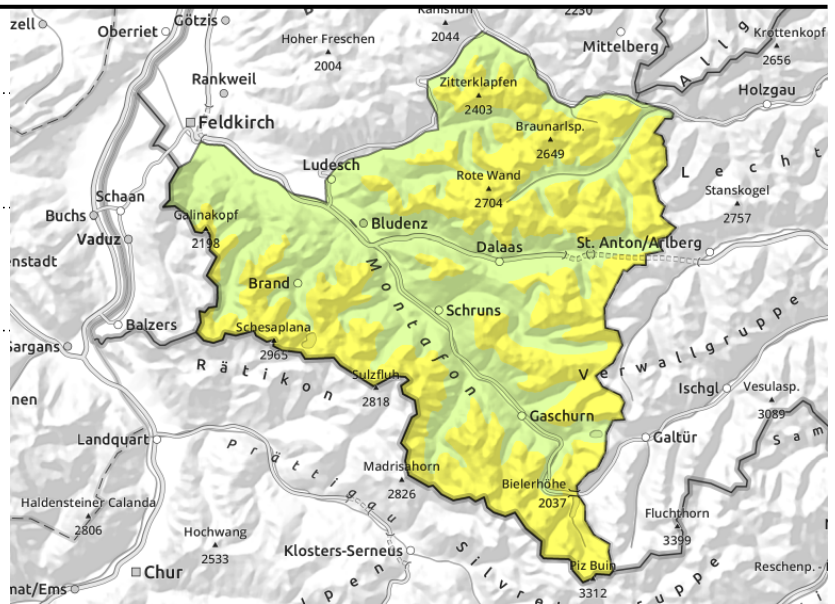
Rätikon West, Rätikon Ost, Silvretta, Verwall, Lechquellengebirge, Lechtaler Alpen



gullies, bowls, behind abrupt discontinuities in the terrain



>2400 m blanketed weak layers are difficult to recognize



Main danger: fresh snowdrift accumulations and weak layers in the old snow

Moderate avalanche danger prevails at high altitudes. Fresh and older drifts are sometimes prone to triggering on shady slopes on wind-protected ridgeline slopes, and behind abrupt discontinuities in the terrain. The tend to increase with ascending altitude. Also, above 2400 m on steep shady slopes there are unfavourable layers in the old snowpack. As a result of daytime warming and solar radiation, small-to-medium wet-snow and glide-snow avalanches are possible, particularly on sunny slopes.

Snowpack structure

By Monday evening, up to 20-25 cm of fresh snow is expected. At high altitudes it will be transported. Fresh snow and freshly generated snowdrifts are prone to triggering. They lie deposited atop soft layers or melt-freeze encrusted surfaces. Bonding worsens with ascending altitude. At high altitudes, particularly on steep shady slopes, there are still weak layers deeply embedded inside the snowpack. These danger zones are not visible to the naked eye. Below 1800 m the snow is often falling on bare ground.

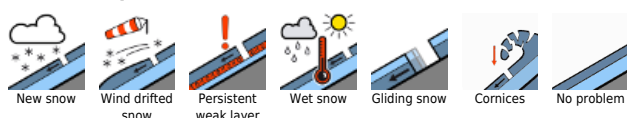
Weather

Nocturnal hours: starting at midnight, light rainfall/snowfall will set in. The snowfall level will descend initially from 1800 down to nearly 900 m. Monday: a cold front will bring some fresh snowfall. Behind the front the precipitation will slacken off. Clouds will remain heavy for most of the day, visibility correspondingly poor. Temperature at 2000 m: descending from -3 to -6 degrees. Strong and gusty NW winds.

Outlook

On Tuesday, snowfall down to low lying areas. During the daytime hours weather conditions will calm, a bit of sunshine is anticipated. It will remain cold and windy. Avalanche danger levels could increase again.

Avalanche problems

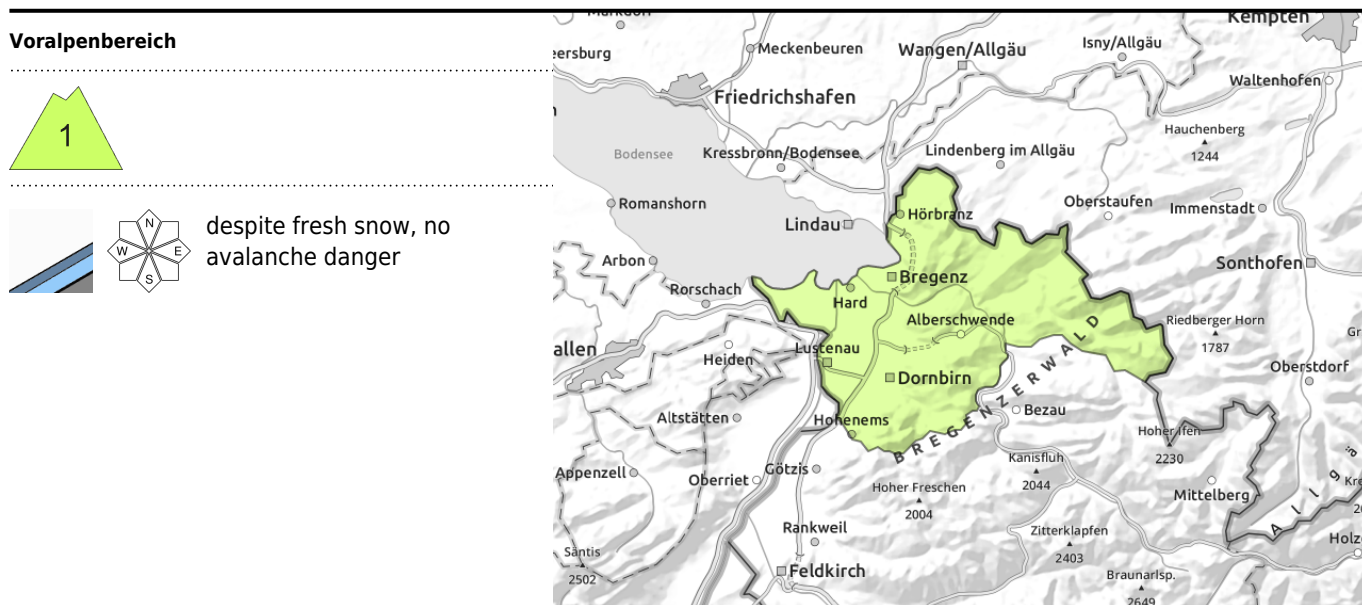


Danger ratings



Expositions





Despite some fresh snow, no avalanche danger to start with

Snowpack structure

Up to 10 cm of fresh snow is anticipated, falling mostly on bare ground or residual snow fragments. The minor snowpack has receded further in the last few days.

Weather

Nocturnal hours: starting at midnight, light rainfall/snowfall will set in. The snowfall level will descend initially from 1800 down to nearly 900 m. Monday: a cold front will bring some fresh snowfall. Behind the front the precipitation will slacken off. Clouds will remain heavy for most of the day, visibility correspondingly poor. Temperature at 2000 m: descending from -3 to -6 degrees. Strong and gusty NW winds.

Outlook

On Tuesday, snowfall down to low lying areas. During the daytime hours weather conditions will calm, a bit of sunshine is anticipated. It will remain cold and windy. Avalanche danger levels could increase again.

Avalanche problems

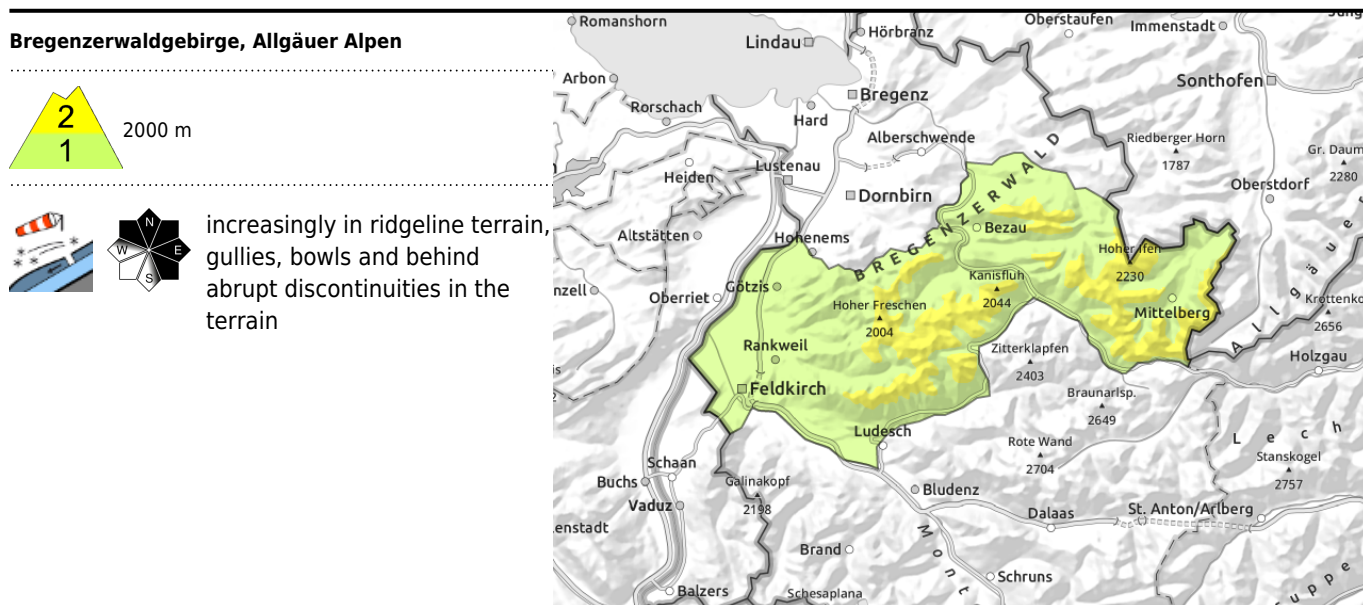


Danger ratings



Expositions





Heed snowdrift accumulations increasingly in high altitude terrain

Low avalanche danger prevails, moderate danger at high altitudes. With ascending altitude the snowdrifts on shady slopes in particular and in wind-protected, ridgeline terrain, as well as behind abrupt discontinuities in the terrain, are prone to triggering. Size and spread of the danger zones will increase as the day unfolds. Small to medium avalanche triggerings are possible from winter sports enthusiasts. Naturally triggered slides and small loose-snow avalanches are also possible on very steep slopes and heavily wind-loaded zones.

Snowpack structure

By Monday evening, up to 20-25 cm of fresh snow is expected. At high altitudes it will be transported. Fresh snow and freshly generated snowdrifts are prone to triggering. They lie deposited atop soft layers or melt-freeze encrusted surfaces. Bonding worsens with ascending altitude. Below 1800 m the snow is often falling on bare ground.

Weather

Nocturnal hours: starting at midnight, light rainfall/snowfall will set in. The snowfall level will descend initially from 1800 down to nearly 900 m. Monday: a cold front will bring some fresh snowfall. Behind the front the precipitation will slacken off. Clouds will remain heavy for most of the day, visibility correspondingly poor. Temperature at 2000 m: descending from -3 to -6 degrees. Strong and gusty NW winds.

Outlook

On Tuesday, snowfall down to low lying areas. During the daytime hours weather conditions will calm, a bit of sunshine is anticipated. It will remain cold and windy. Avalanche danger levels could increase again.

Translated by Jeffrey McCabe, www.creativtrans.com

Avalanche problems



Danger ratings



Expositions

