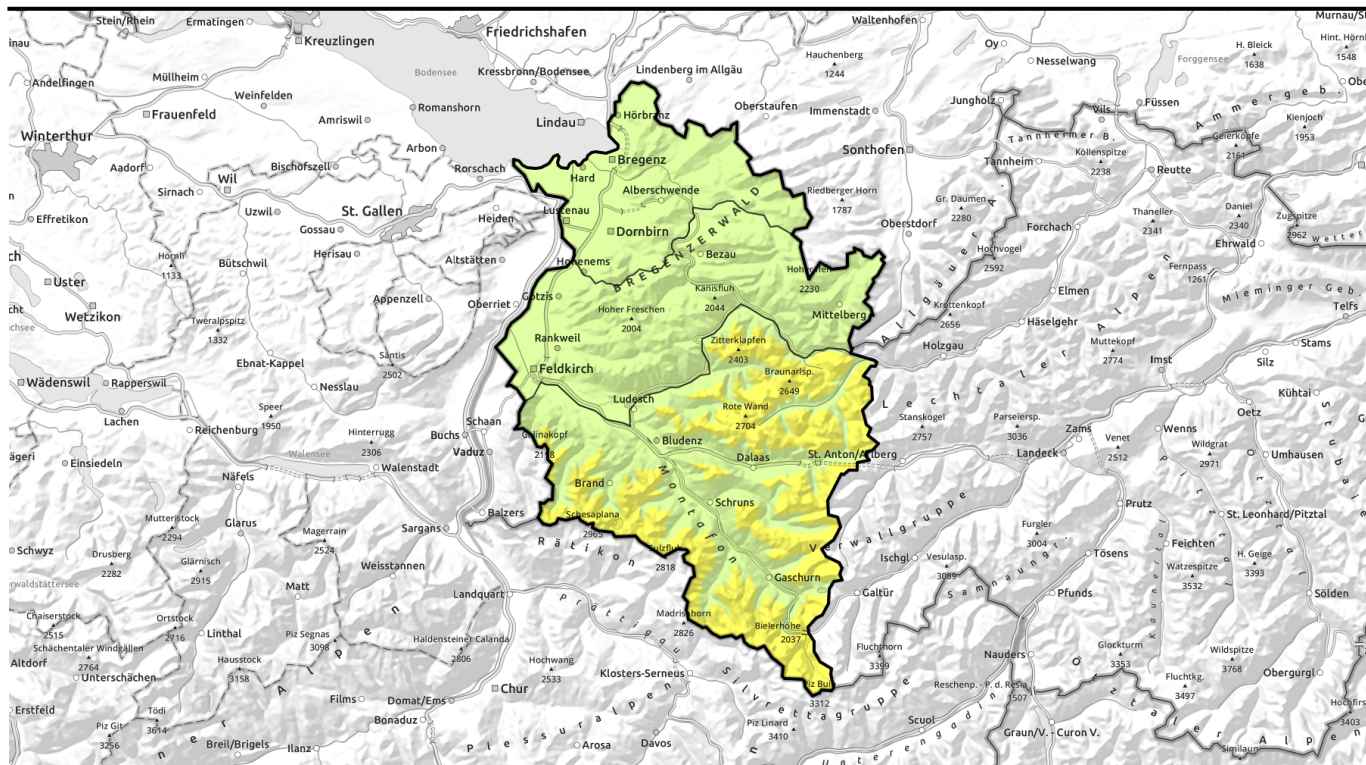


Avalanche report for Sunday, 08.01.2023



Moderate avalanche danger at high altitudes

	<p>2300 m Rätikon West, Rätikon Ost, Silvretta, Verwall, Lechquellengebirge, Lechtaler Alpen</p>	
	<p>Voralpenbereich</p>	
	<p>Bregenzerwaldgebirge, Allgäuer Alpen</p>	

Avalanche problems



Danger ratings



Expositions



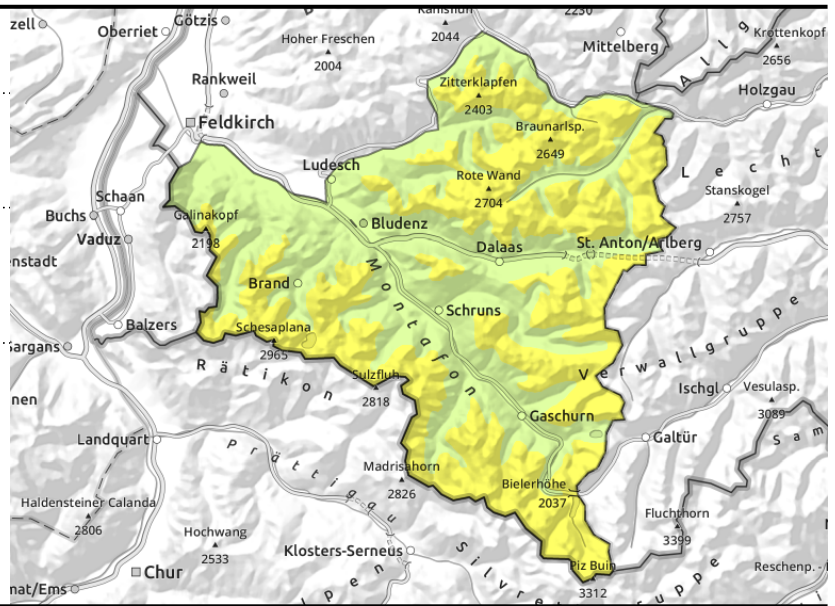
Rätikon West, Rätikon Ost, Silvretta, Verwall, Lechquellengebirge, Lechtaler Alpen



in ridgeline terrain, gullies, bowls and behind abrupt discontinuities in the terrain



>2400 m blanketed weak layers are difficult to recognize



Main danger: fresh snowdrift accumulations and weak layers in the old snow

Mostly moderate avalanche danger prevails at high altitudes. Fresh and older drifts are sometimes prone to triggering on shady slopes on wind-protected ridgeline slopes, and behind abrupt discontinuities in the terrain. The tend to increase with ascending altitude. Also, above 2400 m on steep shady slopes there are unfavourable layers in the old snowpack. As a result of daytime warming and solar radiation, small-to-medium wet-snow and glide-snow avalanches are possible, particularly on sunny slopes. The risks of being forced to take a fall should not be underestimated.

Snowpack structure

The fresh and also some older snowdrift accumulations are often still prone to triggering They lie deposited atop loose and soft layers or melt-freeze encrusted surfaces. Bonding is only moderate. At high altitudes, esp. on steep shady slopes there are weak layers evident inside the snowpack. These danger zones are not visible to the naked eye. Below 1800 m there is only little snow on the ground; below 1200 m the ground is mostly bare. Reports from outlying terrain are sparse.

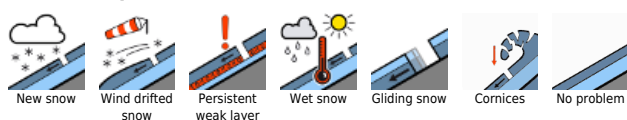
Weather

Nocturnal hours: only slightly cloudy skies, mostly clear until dawn. Sunday: strong-velocity southerly foehn wind, not much sun due to heavy cloud layers (mostly above summit level except in the Silvretta). Visibility often diffuse. In the afternoon, possible initial precipitation (light). At 2000 m: -2 degrees. Strong SW winds.

Outlook

On Monday, low-pressure front conditions, dropping temperatures, some precipitation. Avalanche danger levels could increase again.

Avalanche problems



Danger ratings



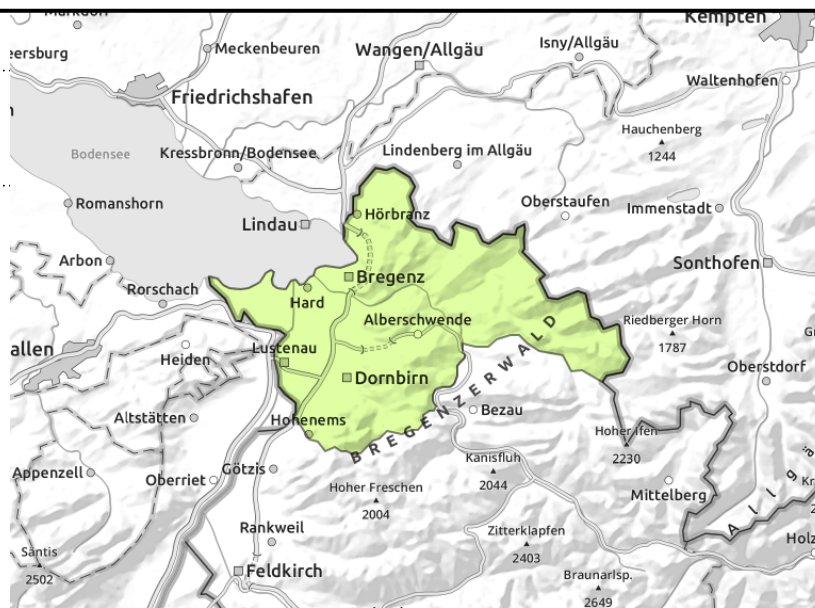
Expositions



Voralpenbereich



no avalanche problem due to lack of snow



Hardly any snow, low avalanche danger

Hardly any snow, low avalanche danger

Snowpack structure

The minor snowpack has receded further in the last few days. The ground is nearly bare of snow.

Weather

Nocturnal hours: only slightly cloudy skies, mostly clear until dawn. Sunday: strong-velocity southerly foehn wind, not much sun due to heavy cloud layers (mostly above summit level except in the Silvretta). Visibility often diffuse. In the afternoon, possible initial precipitation (light). At 2000 m: -2 degrees. Strong SW winds.

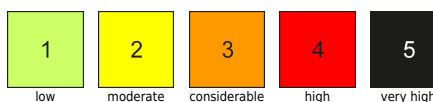
Outlook

On Monday, low-pressure front conditions, dropping temperatures, some precipitation. Avalanche danger levels will not change initially.

Avalanche problems



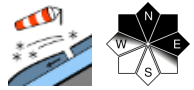
Danger ratings



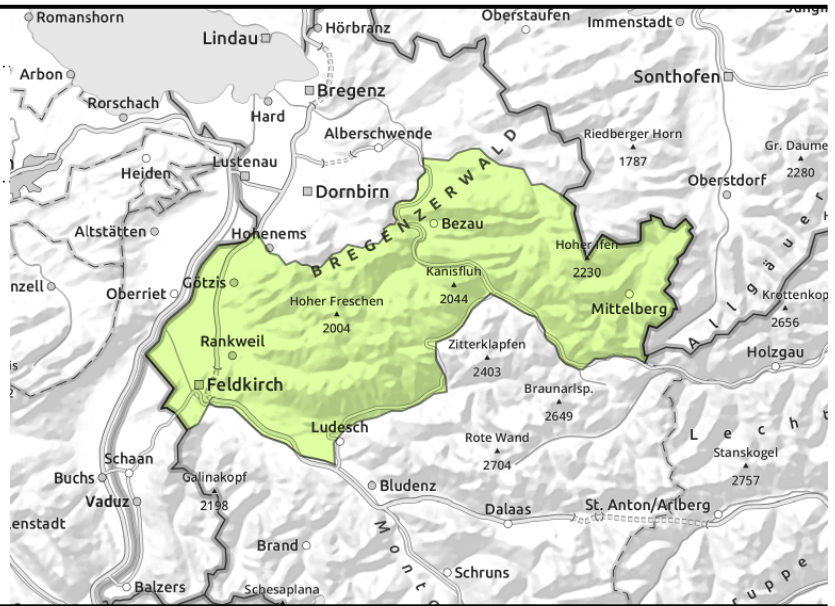
Expositions



Bregenzerwaldgebirge, Allgäuer Alpen



small, in ridgelines, gullies, bowls and behind abrupt discontinuities in the terrain



Heed small drifts at high altitudes

Low avalanche danger. Fresh drifts are often prone to triggering in shady, wind-protected ridgeline terrain. In zones where avalanche danger is low, isolated small releases are possible in extremely steep terrain. In steep terrain where there is a melt-freeze crust on the surface, the danger of being forced to take a fall should not be underestimated.

Snowpack structure

The recent and also some older snowdrift accumulations are often still prone to triggering at high altitudes. They lie deposited atop loose and soft layers or melt-freeze encrusted surfaces. Bonding is only moderate. The snowpack has settled further in the last few days and is well consolidated by and large. Below 1800 m there is only little snow on the ground; below 1200 m the ground is mostly bare.

Weather

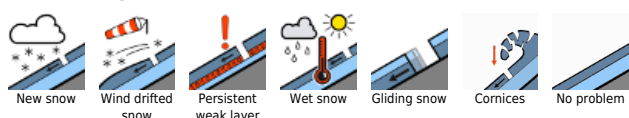
Nocturnal hours: only slightly cloudy skies, mostly clear until dawn. Sunday: strong-velocity southerly foehn wind, not much sun due to heavy cloud layers (mostly above summit level except in the Silvretta). Visibility often diffuse. In the afternoon, possible initial precipitation (light). At 2000 m: -2 degrees. Strong SW winds.

Outlook

On Monday, low-pressure front conditions, dropping temperatures, some precipitation. Avalanche danger levels could increase again.

Translated by Jeffrey McCabe, www.creativtrans.com

Avalanche problems



Danger ratings



Expositions

