

Heed fresh snowdrift accumulations, weak snow at high altitudes

	2 1 2300 m	Rätikon West, Rätikon Ost, Silvretta, Verwall, Lechquellengebirge, Lechtaler Alpen	
	1	Voralpenbereich	
	1	Bregenzerwaldgebirge, Allgäuer Alpen	

Avalanche problems



Danger ratings



Expositions



Avalanche report for **Saturday, 07.01.2023**

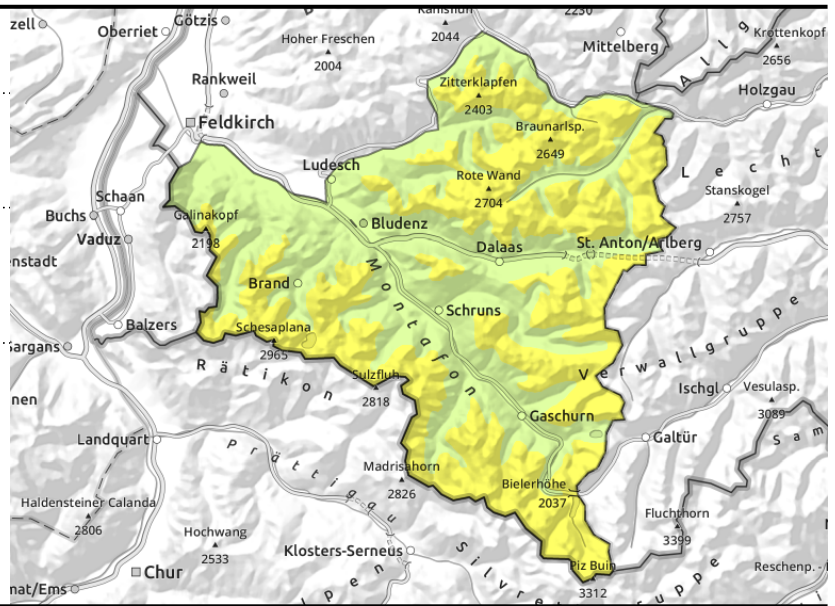
Rätikon West, Rätikon Ost, Silvretta, Verwall, Lechquellengebirge, Lechtaler Alpen



in ridgeline terrain, gullies, bowls and behind abrupt discontinuities in the terrain



>2400 m blanketed weak layers are difficult to recognize



Main danger: snowdrift accumulations and weak layers in the old snow

At high altitudes mostly moderate avalanche danger prevails. Small fresh and older drifts are sometimes prone to triggering on shady slopes on wind-protected ridgeline slopes, and behind abrupt discontinuities in the terrain. The tend to increase with ascending altitude. Also, above 2400 m on steep shady slopes there are unfavourable layers in the old snowpack. As a result of daytime warming and solar radiation, small-to-medium wet-snow and glide-snow avalanches are possible, particularly on sunny slopes. The risks of being forced to take a fall should not be underestimated.

Snowpack structure

The recent and also some older snowdrift accumulations are often still prone to triggering They lie deposited atop loose and soft layers or melt-freeze encrusted surfaces. Bonding is only moderate. At high altitudes, esp. on steep shady slopes there are weak layers evident inside the snowpack. These danger zones are not visible to the naked eye. Below 1800 m there is only little snow on the ground; below 1200 m the ground is mostly bare. Reports from outlying terrain are sparse.

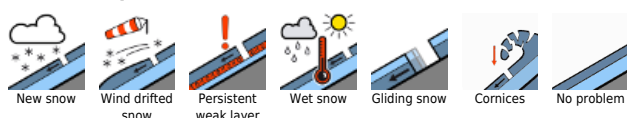
Weather

Nighttime hours: skies will be slightly cloudy, mostly clear until past midnight. In the latter part of the night, high-altitude cloudbanks will move in, some of them compact. Saturday: Intermittent sunshine, despite some cirrus clouds. Diffuse light conditions. The foehn wind will be palpable. At 2000 m: -1 to +4 degrees. Moderate to brisk SW winds.

Outlook

On Sunday, strong foehn winds will bring layered clouds, but it will remain dry until evening. Avalanche danger levels are not expected to change significantly.

Avalanche problems



Danger ratings



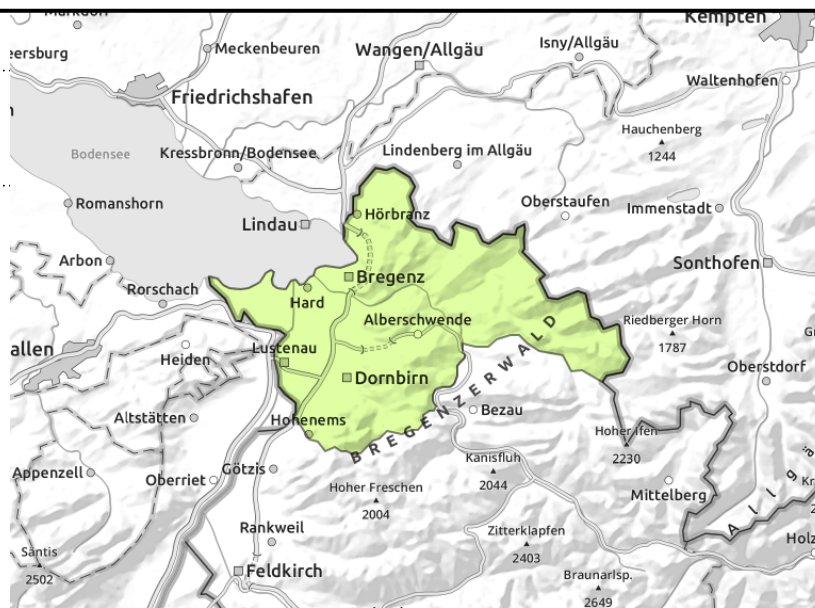
Expositions



Voralpenbereich



no avalanche problem due to lack of snow



Hardly any snow, low avalanche danger

Hardly any snow, no avalanche danger

Snowpack structure

The minor snowpack has receded further in the last few days. The ground is nearly bare of snow.

Weather

Nighttime hours: skies will be slightly cloudy, mostly clear until past midnight. In the latter part of the night, high-altitude cloudbanks will move in, some of them compact. Saturday: Intermittent sunshine, despite some cirrus clouds. Diffuse light conditions. The foehn wind will be palpable. At 2000 m: -1 to +4 degrees. Moderate to brisk SW winds.

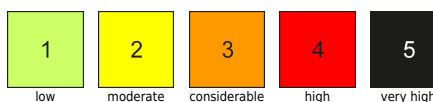
Outlook

On Sunday, strong foehn winds will bring layered clouds, but it will remain dry until evening. Avalanche danger levels will remain low.

Avalanche problems



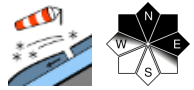
Danger ratings



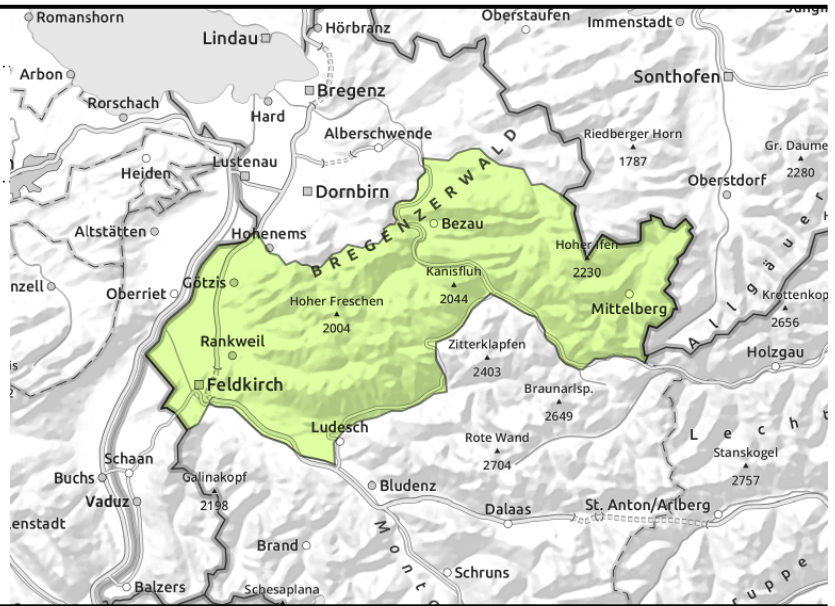
Expositions



Bregenzerwaldgebirge, Allgäuer Alpen



small, in ridgelines, gullies, bowls and behind abrupt discontinuities in the terrain



Heed small drifts at high altitudes

Low avalanche danger. Fresh drifts are often prone to triggering in shady, wind-protected ridgeline terrain. In zones where avalanche danger is low, isolated small releases are possible in extremely steep terrain. In steep terrain where there is a melt-freeze crust on the surface, the danger of being forced to take a fall should not be underestimated.

Snowpack structure

At high altitudes, the recent and also some older snowdrift accumulations are often still prone to triggering. They lie deposited atop loose and soft layers or melt-freeze encrusted surfaces. Bonding is only moderate. The snowpack has settled further in the last few days and is well consolidated by and large. Below 1800 m there is only little snow on the ground; below 1200 m the ground is mostly bare.

Weather

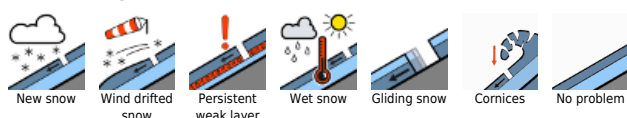
During the night: rainfall will slacken off, the latter part of the night will be dry. In Rhine Valley and at Lake Constance, high fog-like residual cloud will persist, elsewhere the clouds will disperse. Friday: apart from residual cloud at the edge of the Rhine Valley and the Alpine Prealps, sunshine right from the start. Cirrus clouds passing through will not be a disturbance. Winds will ease. Temperature at 2000 m: 0-3 degrees. Moderate to brisk westerly winds.

Outlook

Saturday will be intermittently sunny, and quite mild. Foehn wind will arise in the mountains. Avalanche danger levels are not expected to change significantly.

Translated by Jeffrey McCabe, www.creativtrans.com

Avalanche problems



Danger ratings



Expositions

