

Caution: regional small snowdrifts and weak old snow at high altitudes

	2200 m Rätikon West, Rätikon Ost, Silvretta, Verwall, Lechquellengebirge, Lechtaler Alpen, Allgäuer Alpen	
	Voralpenbereich	
	2000 m Bregenzerwaldgebirge	

Avalanche problems



Danger ratings



Expositions

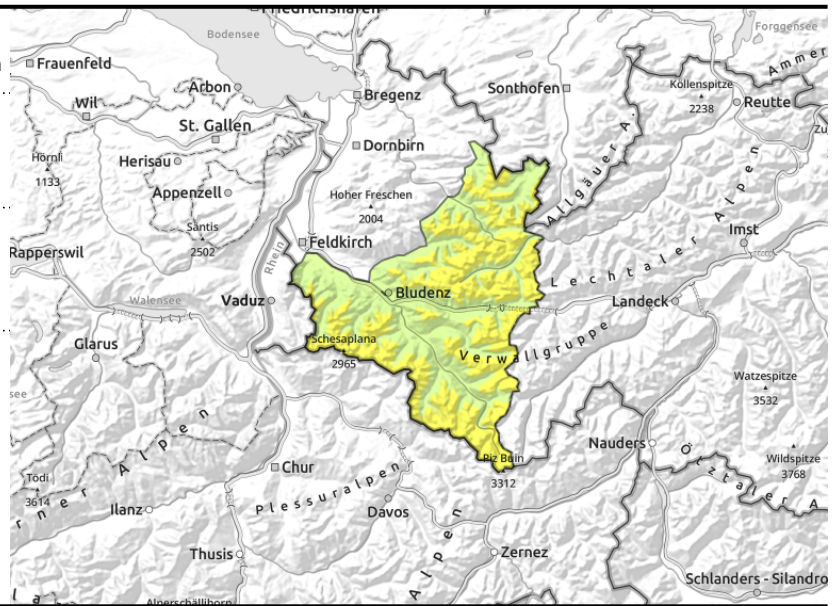


Rätikon West, Rätikon Ost, Silvretta, Verwall, Lechquellengebirge, Lechtaler Alpen, Allgäuer Alpen



>2400 m blanketed weak layers are difficult to recognize

small, in ridgeline areas, gullies, bowls



Main danger: weak layers in the old snow - small drifts at high altitudes

Mostly moderate avalanche danger prevails. Older and small fresh drifts are sometimes prone to triggering on shady slopes in wind-protected ridgeline terrain. The tend to increase with ascending altitude. Also, above 2400 m on steep shady slopes there are unfavourable layers in the old snowpack. Settling noises, glide. cracks are signals of danger. As a result of daytime warming and solar radiation, small-to-medium wet-snow and glide-snow avalanches are possible, particularly on sunny slopes. The risks of being forced to take a fall should not be underestimated.

Snowpack structure

At high altitudes, light winds, a few centimetres of fresh snow. Mostly in steep shady terrain, weak layers in the snowpack are evident. Danger zones are not visible to the naked eye. The snowpack has settled well in the last few days due to warm temperatures and solar radiation, plus nocturnal cooling. At high altitudes, wind-compacted and melt-freeze encrusted surfaces dominate. Only in wind-protected shady terrain is the snow still soft. Below 1600 m there is little snow; below 1200 m the ground is bare by and large. Reports from outlying areas are seldom currently, due to the shallow snowpack.

Weather

On Tuesday night: clouds will disperse. On Wednesday: intermediate high, a sunny morning, In the afternoon, increasing cloud build-up, good visibility but becoming more diffuse. At 2000 m: -1 to +2 degrees. Moderate to brisk westerly winds at high altitudes.

Outlook

On Thursday above 1700 m, a bit of fresh snow, most of it falling in the barrier cloud zones of the northern regions. Danger of dry-snow avalanches might rise again regionally.

Avalanche problems

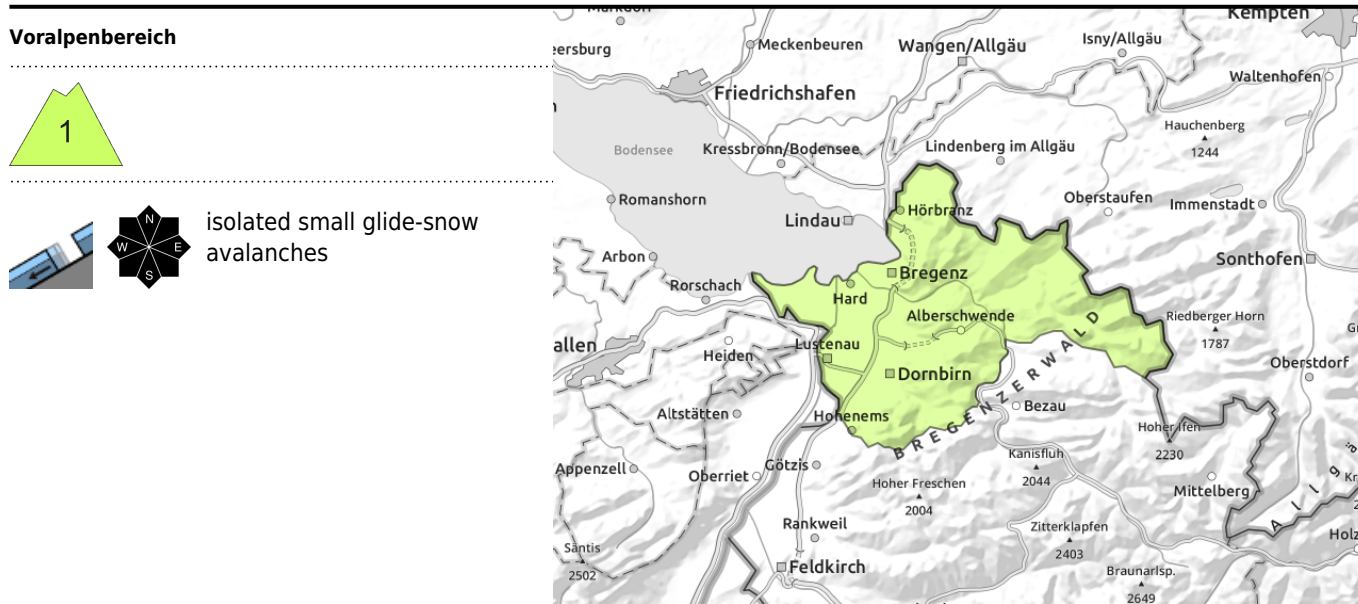


Danger ratings



Expositions





Not much snow. Moist slides and glide-snow avalanches possible during the daytime.

Low avalanche danger. Due to daytime warming and solar radiation, glide-snow avalanches and moist slides are possible.

Snowpack structure

The snowpack has settled and consolidated well over the last few days due to warm temperatures and solar radiation. Below 1800 m there is little snow on the ground. Below 1200 m the ground is bare of snow.

Weather

On Tuesday night: clouds will disperse. On Wednesday: intermediate high, a sunny morning, In the afternoon, increasing cloud build-up, good visibility but becoming more diffuse.

At 2000 m: -1 to +2 degrees. Moderate to brisk westerly winds at high altitudes.

Outlook

Avalanche danger will remain low.

Avalanche problems

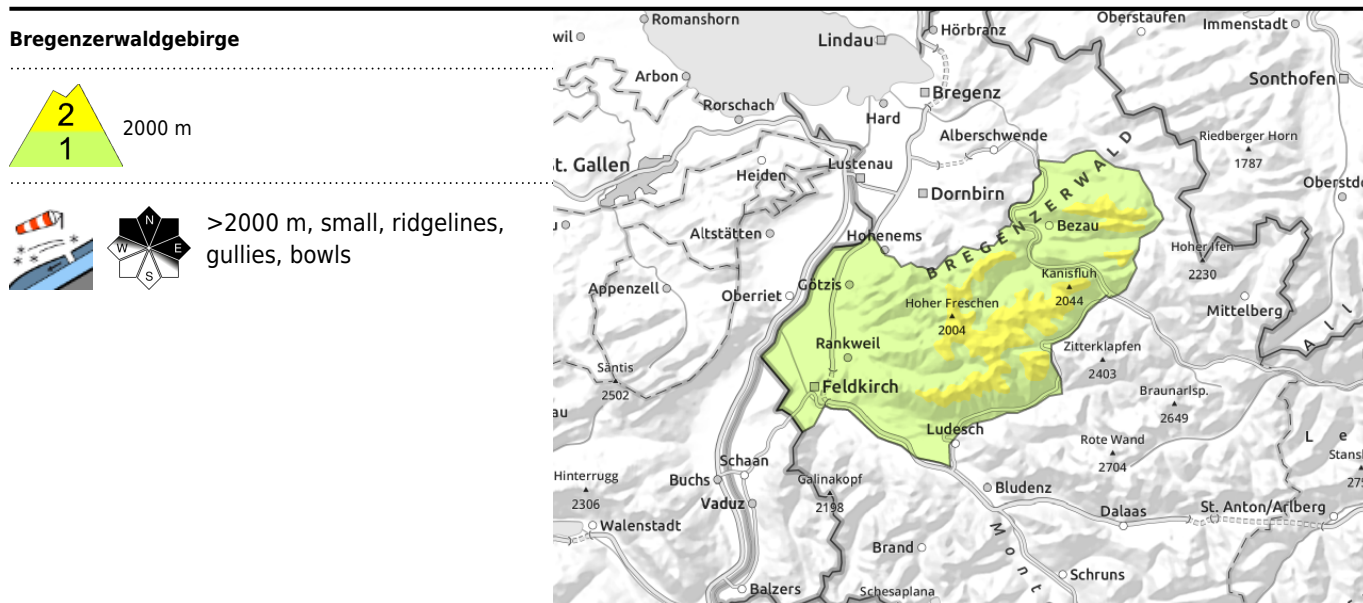


Danger ratings



Expositions





Heed small drifts at high altitudes

At high altitudes, moderate avalanche danger. Older and small fresh drifts are often prone to triggering in shady, wind-protected ridgeline terrain. Such danger zones increase with ascending altitude. Small to medium avalanches are possible especially with large additional loading. In zones where avalanche danger is low, isolated small releases are possible in extremely steep terrain. In steep terrain where there is a melt-freeze crust on the surface, the danger of being forced to take a fall should not be underestimated.

Snowpack structure

At high altitudes, light winds, a few centimetres of fresh snow. Mostly in steep shady terrain, weak layers in the snowpack are evident. Danger zones are not visible to the naked eye. The snowpack has settled well in the last few days due to warm temperatures and solar radiation, plus nocturnal cooling. At high altitudes, wind-compacted and melt-freeze encrusted surfaces dominate. Only in wind-protected shady terrain is the snow still soft. Below 1600 m there is little snow; below 1200 m the ground is bare by and large. Reports from outlying areas are seldom currently, due to the shallow snowpack.

Weather

On Tuesday night: clouds will disperse. On Wednesday: intermediate high, a sunny morning, In the afternoon, increasing cloud build-up, good visibility but becoming more diffuse. At 2000 m: -1 to +2 degrees. Moderate to brisk westerly winds at high altitudes.

Outlook

On Thursday above 1700 m, a bit of fresh snow, most of it falling in the barrier cloud zones of the northern regions. Danger of dry-snow avalanches might rise again regionally.

Translated by Jeffrey McCabe, www.creativtrans.com

Avalanche problems



Danger ratings



Expositions

