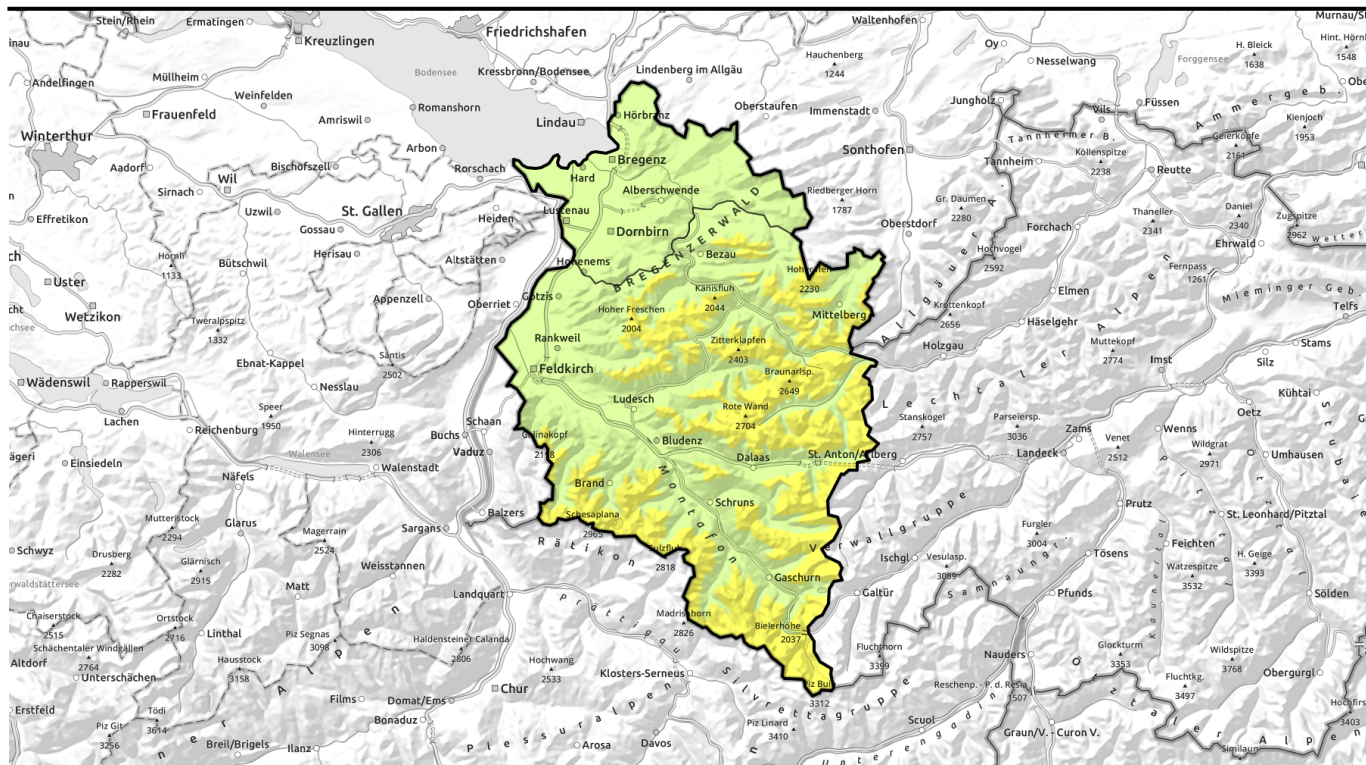


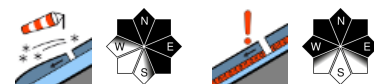
Avalanche report for Monday, 02.01.2023



Very mild, foehn conditions. Caution: snowdrifts and weak old snow at high altitudes.



Rätikon West, Rätikon Ost, Silvretta, Verwall, Lechquellengebirge, Lechtaler Alpen, Bregenzerwaldgebirge, Allgäuer Alpen



Voralpenbereich



Avalanche problems



Danger ratings



Expositions



Avalanche report for Monday, 02.01.2023

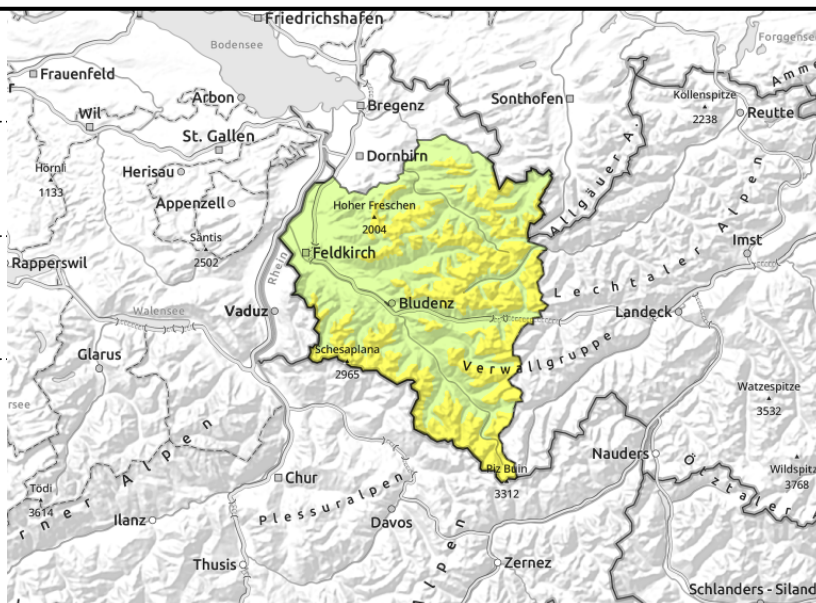
Rätikon West, Rätikon Ost, Silvretta, Verwall, Lechquellengebirge, Lechtaler Alpen, Bregenzerwaldgebirge, Allgäuer Alpen



latest snowdrifts prone to triggering in places



>2400 m blanketed weak layers are difficult to recognize



Main danger: fresh snowdrifts and weak layers in the old snow

Latest snowdrift accumulations are prone to triggering, especially on wind-protected shady slopes. Danger zones are located mostly at high altitudes and in foehn lanes. Also, above 2400 m on steep shady slopes there are unfavourable layers in the old snowpack. Settling noises, glide cracks are signals of danger. As a result of daytime warming and solar radiation, small-to-medium wet-snow and glide-snow avalanches are possible, particularly on shady slopes below 2000 m, and on sunny slopes below 2400 m

Snowpack structure

The windy, mild conditions continue. Amid intermittently strong SW winds, fresh snowdrift accumulations have repeatedly been generated over the last few days and are prone to triggering. With solar radiation and daytime warming the snowpack on very steep sunny slopes is weakened over the course of the day. On steep sunny slopes a breakable melt-freeze crust has formed. Particularly on shady slopes above 2200 m the snowpack layering is unfavourable. These danger zones are not visible to the naked eye. The generally shallow snowpack is moist up to intermediate altitudes. Skiing tours and descents in outlying terrain below the timberline, often below 2000 m, are unrewarding due to the lack of snow. At low altitudes there is often no snow on the ground.

Weather

Sunday night: it will remain dry, foehn-impacted, slightly cloudy. Monday: clouds will pass through but sunshine will predominate. Zero-degree level nearly at 3000 m: very mild, but temperatures will start to drop in the afternoon. In foehn-lanes very windy. At 2000 m: 2-7 degrees. Moderate SW winds, stronger in the foehn-lanes.

Outlook

A weak cold front on Tuesday will bring gray skies. Above 1500 m, minor snowfall. Danger of dry-snow avalanches not expected to change significantly. Danger of wet-snow avalanches will diminish as temperatures drop.

Avalanche problems



Danger ratings



Expositions

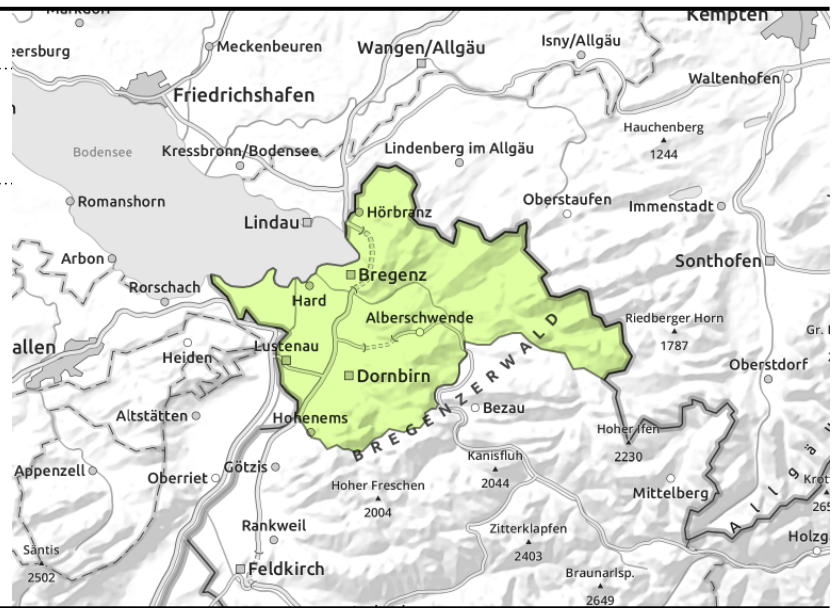


Avalanche report for Monday, 02.01.2023

Voralpenbereich



moist slides and glide-snow avalanches



Not much snow. Moist slides and glide-snow avalanches possible during the daytime.

Low avalanche danger. Due to daytime warming and solar radiation, glide-snow avalanches and moist slides are possible on slopes which have not yet discharged.

Snowpack structure

The mostly shallow snowpack or below average snow depths are moist up to intermediate altitudes. Ski tours and descents below the timberline, even below 2000 m, are unrewarding due to lack of snow. At low altitudes there is often no snow on the ground.

Weather

Sunday night: it will remain dry, foehn-impacted, slightly cloudy. Monday: clouds will pass through but sunshine will predominate. Zero-degree level nearly at 3000 m: very mild, but temperatures will start to drop in the afternoon. In foehn-lanes very windy. At 2000 m: 2-7 degrees. Moderate SW winds, stronger in the foehn-lanes.

Outlook

Avalanche danger will remain low.

Translated by Jeffrey McCabe, www.creativtrans.com

Avalanche problems



Danger ratings



Expositions

