

Increase in avalanche danger due to fresh snow and wind at high altitudes



2000 m Rätikon West, Rätikon Ost, Silvretta, Verwall, Lechquellengebirge, Lechtaler Alpen, Allgäuer Alpen, Bregenzerwaldgebirge



Voralpenbereich



Avalanche problems



Danger ratings

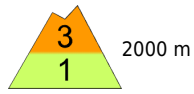


Expositions



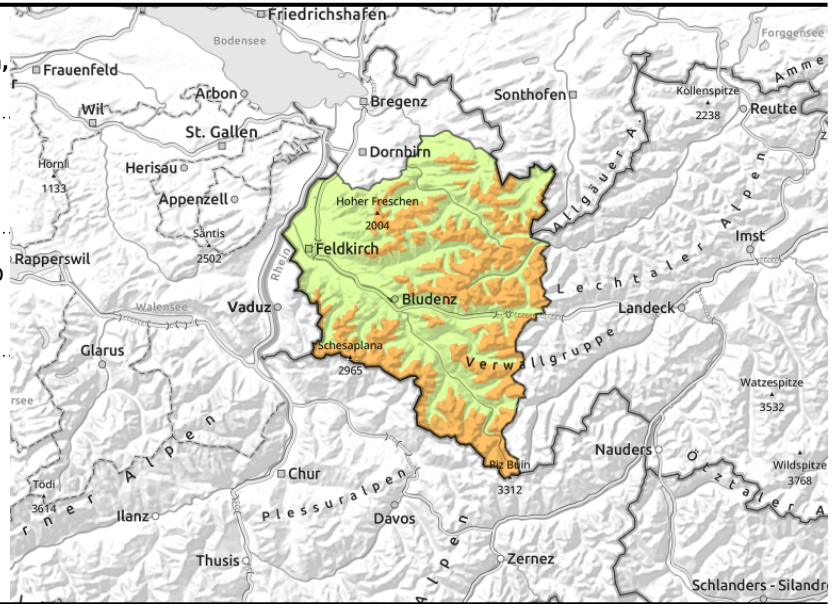
Avalanche report for Tuesday, 27.12.2022

Rätikon West, Rätikon Ost, Silvretta, Verwall, Lechquellengebirge, Lechtaler Alpen, Allgäuer Alpen, Bregenzerwaldgebirge



fresh snow, snowdrifts prone to triggering

>2300 m blanketed weak layers in old snow invisible to the naked eye



Main danger: fresh and older drifts plus weak layers in the old snowpack

At high altitudes, particularly on steep ridgeline slopes, in wind-loaded gullies and bowls and behind abrupt discontinuities in the terrain, fresh and older snowdrift accumulations require high attentiveness. Size and spread of danger zones increase with ascending altitude. In addition, above 2200/2300 m on steep shady slopes in particular, there are unfavourable weak layers evident. One sole winter sports enthusiast can trigger avalanches of medium size which can then sweep away the entire snowpack and grow, in isolated cases, to large size. On steep grassy slopes in all aspects below about 2200 m, small-to-medium glide-snow avalanches can trigger naturally in zones which have not yet discharged.

Snowpack structure

By Tuesday morning, up to 15 cm of fresh snow is possible in the Allgau Alps, Lechquellen Massif, Lechtal Alps and Rätikon. In the other regions, up to 10 cm. In the morning up to 5 cm of fresh snow can be added to it. Strong westerly winds will transport the fresh snow, form trigger-sensitive snowdrift accumulations. Particularly on steep shady slopes above 2200 m, the snowpack layering is unfavourable. These danger zones are not visible to the naked eye. The generally shallow snowpack is moist up to 2300 m. Skiing tours and descents in outlying terrain below the timberline, often below 2000 m, are unrewarding due to the lack of snow. At low altitudes there is often no snow on the ground.

Weather

Monday night: a cold front will bring precipitation, snowfall above 1500 m, in early morning down to 1000 m or lower. Tuesday: snow showers at the start, slackening off, the fogbanks will disperse somewhat. Lots of sunshine in the afternoon, then the next clouds will move in. Colder than recently. At 2000 m: -4 degrees. Strong westerly winds initially, then easing.

Outlook

As a result of the westerly air current on Wednesday, cloudbanks will move in above summit level. Temperatures will rise. At 2000 m: -6 to -1 degree. Moderate to strong W/SW winds. Avalanche danger will gradually decrease.

Avalanche problems



Danger ratings

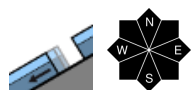


Expositions

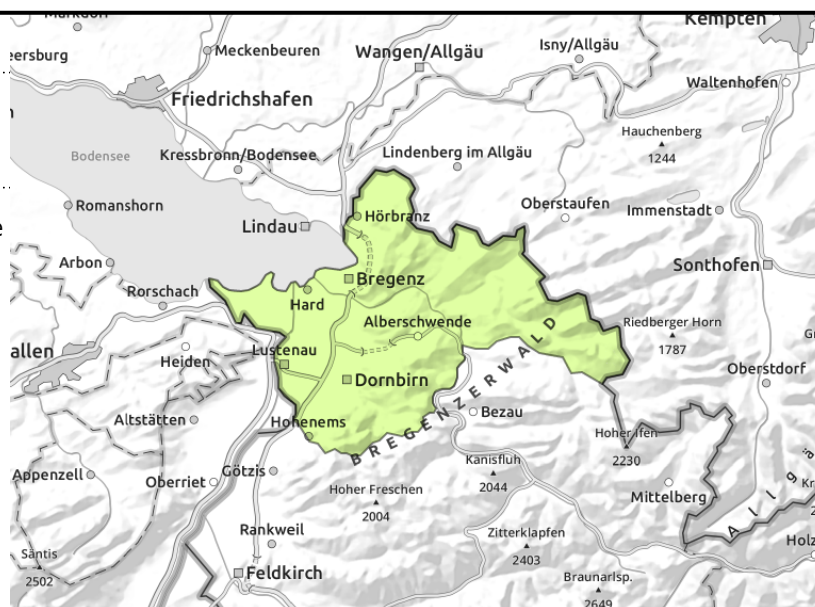


Avalanche report for Tuesday, 27.12.2022

Voralpenbereich



from starting zones which have not yet discharged



Below 1800 m there is very little snow on the ground

Low avalanche danger prevails. On steep slopes which have not yet discharged small glide-snow avalanches can trigger naturally. With increasing altitude, small trigger-sensitive snowdrifts require attentiveness.

Snowpack structure

The shallow snowpack is thoroughly wet up to intermediate altitudes. Temperatures are helping the snowpack layering. There is very little snow on the ground.

Weather

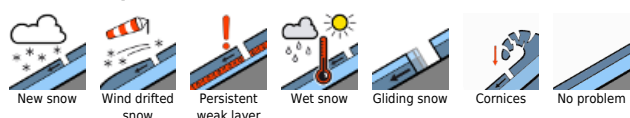
Monday night: a cold front will bring precipitation, snowfall above 1500 m, in early morning down to 1000 m or lower. Tuesday: snow showers at the start, slackening off, the fogbanks will disperse somewhat. Lots of sunshine in the afternoon, then the next clouds will move in. Colder than recently. At 2000 m: -4 degrees. Strong westerly winds initially, then easing.

Outlook

As a result of the westerly air current on Wednesday, cloudbanks will move in above summit level. Temperatures will rise. At 2000 m: -6 to -1 degree. Moderate to strong W/SW winds. Avalanche danger will gradually decrease.

Translated by Jeffrey McCabe, www.creativtrans.com

Avalanche problems



Danger ratings



Expositions

