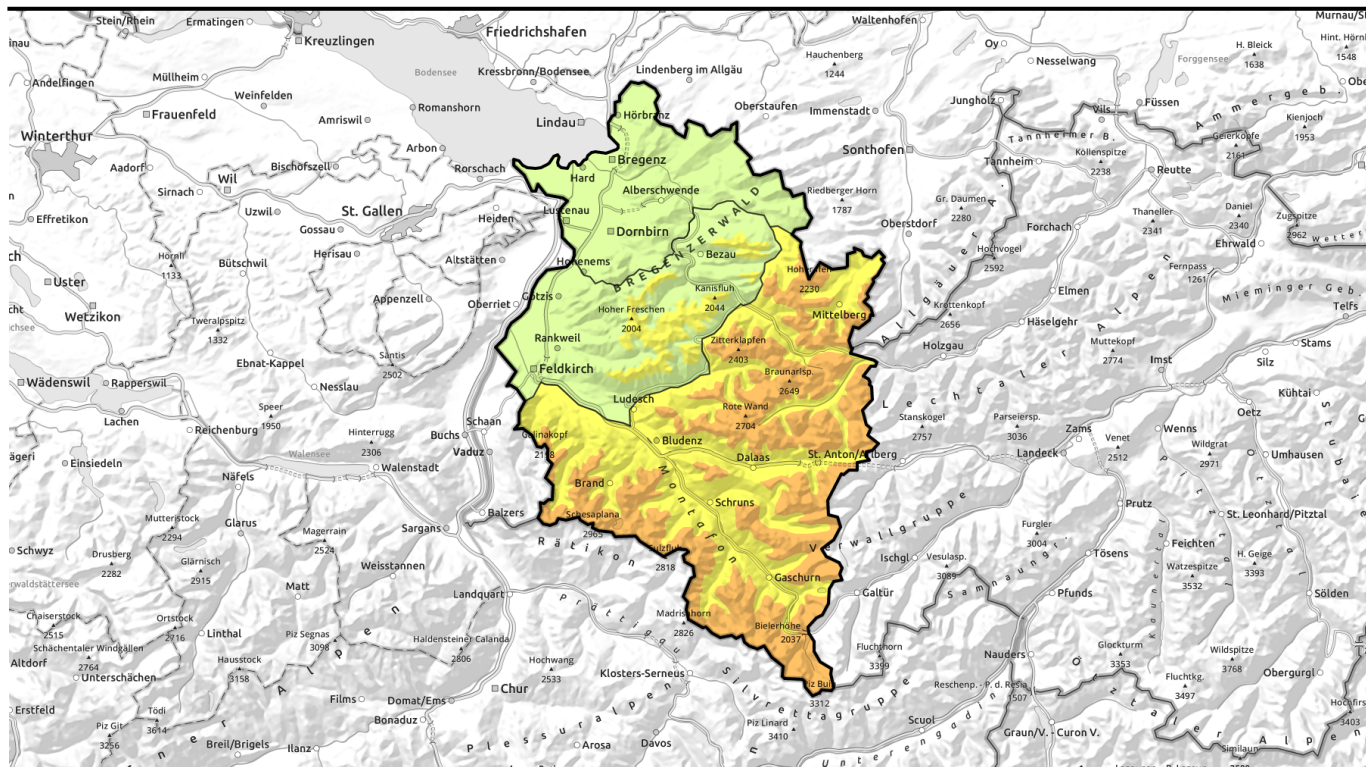


Avalanche report for Monday, 26.12.2022



Still considerable danger regionally at high altitudes

	<p>2300 m Rätikon West, Rätikon Ost, Silvretta, Verwall, Lechquellengebirge, Lechtaler Alpen, Allgäuer Alpen</p>	
	<p>Voralpenbereich</p>	
	<p>forestline Bregenzerwaldgebirge</p>	

Avalanche problems



Danger ratings



Expositions

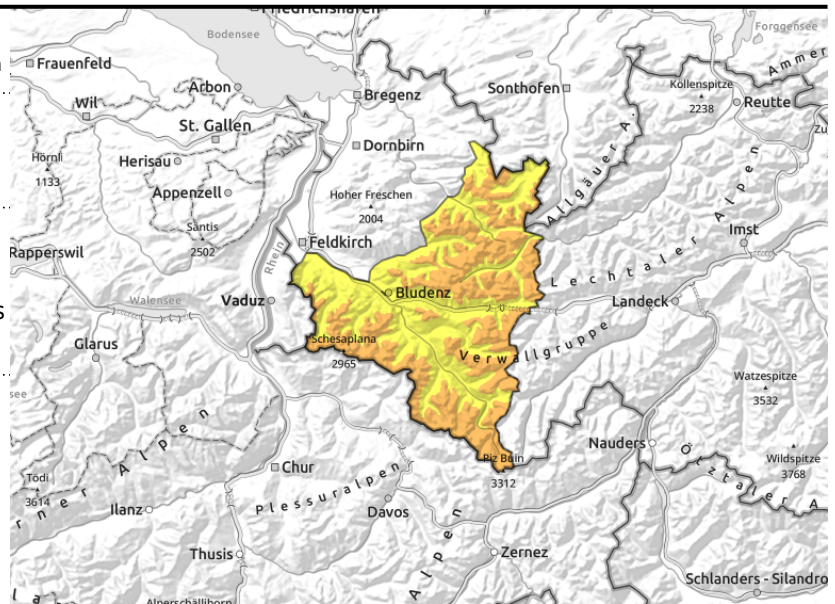


Rätikon West, Rätikon Ost, Silvretta, Verwall, Lechquellengebirge, Lechtaler Alpen, Allgäuer Alpen



>2300 m blanketed weak layers in old snow invisible to the naked eye, fresh snowdrifts with increasing altitude

due to warming and where the snowpack is thoroughly wet: glide-snow avalanches



Attention winter sports enthusiasts: still a treacherous situation at high altitude

With increasing altitude esp. in steep ridgeline terrain, wind-loaded gullies and bowls, behind abrupt discontinuities in the terrain, freshly generated snowdrift accumulations require caution. Size and spread increase with ascending altitude. Also: above 2200/2300 m on steep shady slopes there are unfavourable layers in the old snow, small-to-medium, in isolated cases also large slab avalanches can be triggered even by one sole winter spots enthusiast. Also naturally triggered avalanches are possible on steep shady slopes. These can sweep away the entire snowpack and grow to large size. In zones where there has been rain impact at low and intermediate altitude in all aspects, wet slides and small-to-medium avalanches can trigger from starting zones which have not yet discharged, isolated large-sized avalanches, as well as small glide-snow avalanches on steep grass-covered slopes.

Snowpack structure

The intermittently storm-strength westerly winds at high altitudes have transported the snow and generated new snowdrift accumulations. Fresh fallen snow and freshly generated snowdrifts lie deposited atop an encrusted old snowpack surface. Bonding is often weak-to-moderate. In addition, on steep shady slopes above 2200 m the layering is frequently weak. The additional loading of the fresh snow and drifts will lead to further tensions. These danger spots are not visible to the naked eye. Mostly shallow snowpacks will be further moistened at intermediate altitudes, thereby forfeiting even more of their firmness. Sunny slopes at intermediate altitudes are becoming bare of snow.

Weather

Sunday night: The night will be dry and very mild. Monday: Despite clouds, somewhat sunny. Afternoon: more clouds will move in, a cold front will bring showers plus strong-to-stormy wind gusts. At 2000 m: dropping from +4 to -2 degrees. Brisk to strong SW winds.

Outlook

On Monday night, some precipitation is anticipated. Also, temperatures will drop significantly. Danger of wet-snow avalanches will decrease. At very high altitudes the snowdrifts still require attentiveness and the persistent weak layer will abide.

Avalanche problems



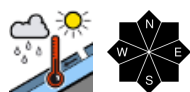
Danger ratings



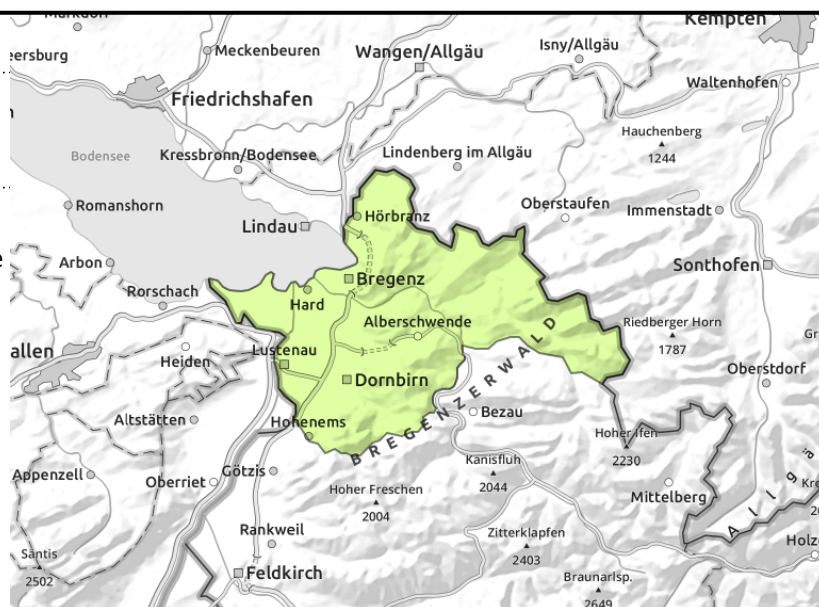
Expositions



Voralpenbereich



slides and small avalanches from starting zones which have not yet discharged, also isolated glide-snow avalanches



Small wet avalanches due to warmth

Low avalanche danger prevails for the most part. As a result of rain impact, wet slides and small avalanches are still possible in zones at intermediate and low altitudes which have not yet discharged, as well as small glide-snow avalanches on steep grass-covered slopes.

Snowpack structure

The shallow snowpack is becoming thoroughly wet up to intermediate altitude, thus forfeiting its firmness. Rain and mild temperatures are improving the snowpack layering. Only little snow lies on the ground. Sunny slopes up to intermediate altitudes are becoming bare of snow.

Weather

Sunday night: The night will be dry and very mild. Monday: Despite clouds, somewhat sunny. Afternoon: more clouds will move in, a cold front will bring showers plus strong-to-stormy wind gusts. At 2000 m: dropping from +4 to -2 degrees. Brisk to strong SW winds.

Outlook

On Monday night, some precipitation is anticipated. Also, temperatures will drop significantly. Danger of wet-snow avalanches will decrease.

Avalanche problems



Danger ratings



Expositions



Bregenzerwaldgebirge



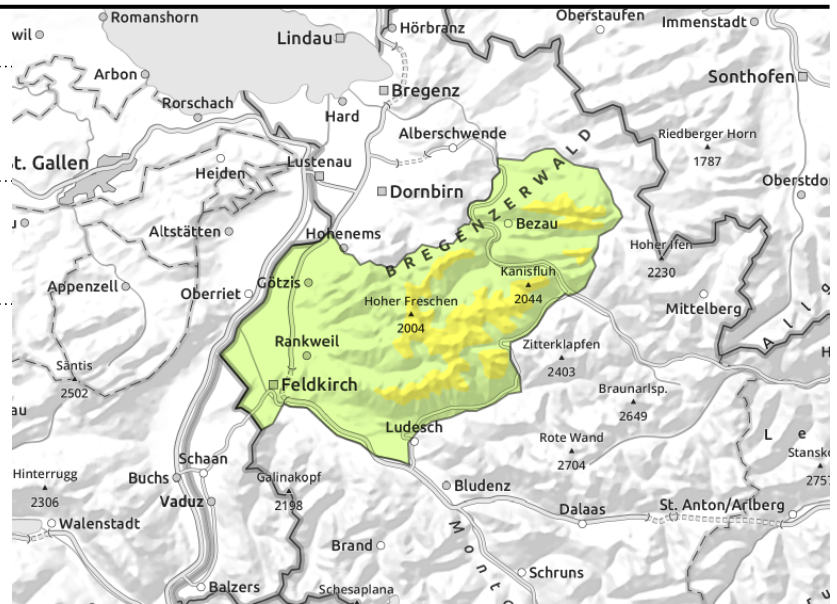
forestline



>1800 m: older snowdrifts are prone to triggering



due to warming where the snowpack is thoroughly wet: small glide-snow avalanches



Mostly low avalanche danger, moderate at higher altitudes

Above the timberline esp. near ridgelines in steep terrain, in wind-loaded gullies and bowls, behind abrupt discontinuities in the terrain, the drifts require attentiveness. Size and spread of the drifts increase with ascending altitude. Small-to-medium, isolated also large-sized slabs can be triggered even by one single winter sports enthusiast. As a result of solar radiation and warmth wet slides and small-to-medium avalanches are possible in all aspects are possible in zones which have not yet discharged, as well as small glide-snow avalanches on steep grassy slopes.

Snowpack structure

The latest round of fresh snowfall and drifts was deposited atop an encrusted old snowpack surface. Bonding inside the layers of drifts is moderate. The snowpack is moist or wet up to high altitudes due to warmth and rainfall, thus, has forfeited its firmness. Below the timberline and at low altitudes there is little snow on the ground.

Weather

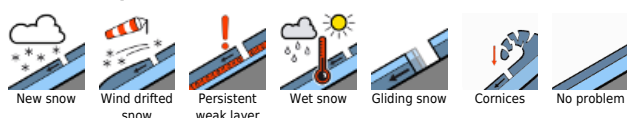
Sunday night: The night will be dry and very mild. Monday: Despite clouds, somewhat sunny. Afternoon: more clouds will move in, a cold front will bring showers plus strong-to-stormy wind gusts. At 2000 m: dropping from +4 to -2 degrees. Brisk to strong SW winds.

Outlook

On Monday night, some precipitation is anticipated. Also, temperatures will drop significantly. Danger of wet-snow avalanches will decrease.

Translated by Jeffrey McCabe, www.creativtrans.com

Avalanche problems



Danger ratings



Expositions

