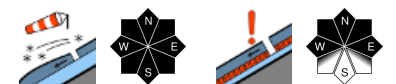


## Moderate danger above 1800 m, low danger below that altitude



Rätikon West, Rätikon Ost, Silvretta, Verwall, Lechquellengebirge, Lechtaler Alpen, Bregenzerwaldgebirge, Voralpenbereich, Allgäuer Alpen



### Avalanche problems



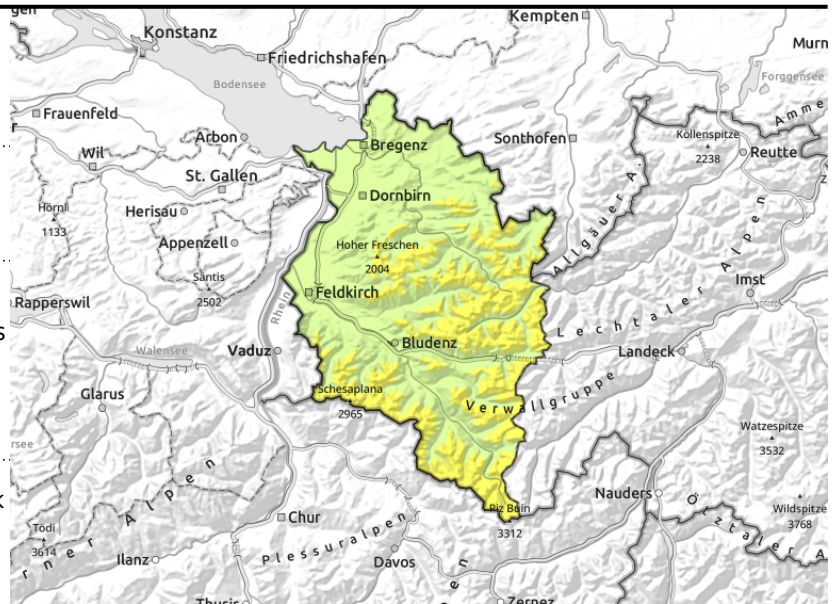
### Danger ratings



### Expositions



**Rätikon West, Rätikon Ost, Silvretta, Verwall, Lechquellengebirge, Lechtaler Alpen, Bregenzerwaldgebirge, Voralpenbereich, Allgäuer Alpen**



forestline



steep ridgeline terrain, wind-loaded gullies and bowls, zones behind abrupt discontinuities in the terrain with increasing altitude



above 2200 m, blanketed weak layers are difficult to recognize

## Main danger: fresh and older snowdrift accumulations and steep shady slopes due to weak snow

Above the timberline avalanche danger is moderate, below that altitude danger is low. At high altitudes, trigger-sensitive snowdrift accumulations have been generated by strong southerly to westerly winds. Danger zones are found particularly in steep ridgeline terrain, in wind-loaded gullies and bowls, and behind abrupt discontinuities in the terrain. Fresh and older snowdrifts can be triggered even by one sole winter sports enthusiast. In addition, above 2000 m, particularly on steep shady slopes, unfavourably layered old snow is evident. One single winter sports enthusiast can in places trigger small, and with increasing altitude also medium-sized slab avalanches. This must be taken into consideration in all activities in outlying terrain. Apart the risks of being buried in snow masses, the danger of being swept along and forced to take a fall are also to be heeded.

### Snowpack structure

In the course of the day, 5-10 cm of fresh snow has been added. Winds are often strong from south to west, particularly in the foehn regions of the Rätikon and Silvretta, elsewhere only light to moderate. In the classic foehn lanes, fresh snowdrift accumulations have been generated at high altitudes. The new and older snowdrifts are prone to triggering. In addition, on north-facing slopes above 2200 m there are crusts in the old snow, between which are layers of facteted crystals, which upon additional loading can be triggered. These layers are not visible to the naked eye.

### Weather

Friday night: intermittent light snowfall from compact clouds, these will disperse with the dry hours during the night from the north. Temperatures: -9 to -4 degrees.

Saturday: in all mountain massifs, sunny weather will take over the residual clouds, brilliant sunshine can be expected. The air is icy cold, the NW winds will intensify that feeling, but the zenith of the cold weather has been reached. At 2000 m. from -10 to 5 degrees. Moderate to brisk NW winds at high altitude.

### Outlook

On Sunday, high-pressure influence will make itself felt, much warmer, cirrus clouds later on in the day. Low temperatures: -15 to -8 degrees, high temperatures -3 to 0 degrees and at intermediate

#### Avalanche problems



#### Danger ratings



#### Expositions



published at 16.12.2022, 18:00 h by Herbert Knünz

# Saturday, 17.12.2022



altitude +5 degrees. Avalanche danger levels will not change significantly, the risks of glide-snow slides at lower altitudes will increase somewhat.

Translated by Jeffrey McCabe, [www.creativtrans.com](http://www.creativtrans.com)

## Avalanche problems



## Danger ratings



## Expositions

