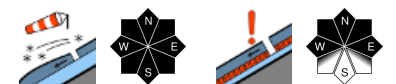


Moderate avalanche danger at high altitude. Heed fresh snowdrift accumulations.



Rätikon West, Rätikon Ost, Silvretta, Verwall, Lechquellengebirge, Lechtaler Alpen, Bregenzerwaldgebirge, Voralpenbereich, Allgäuer Alpen



Avalanche problems



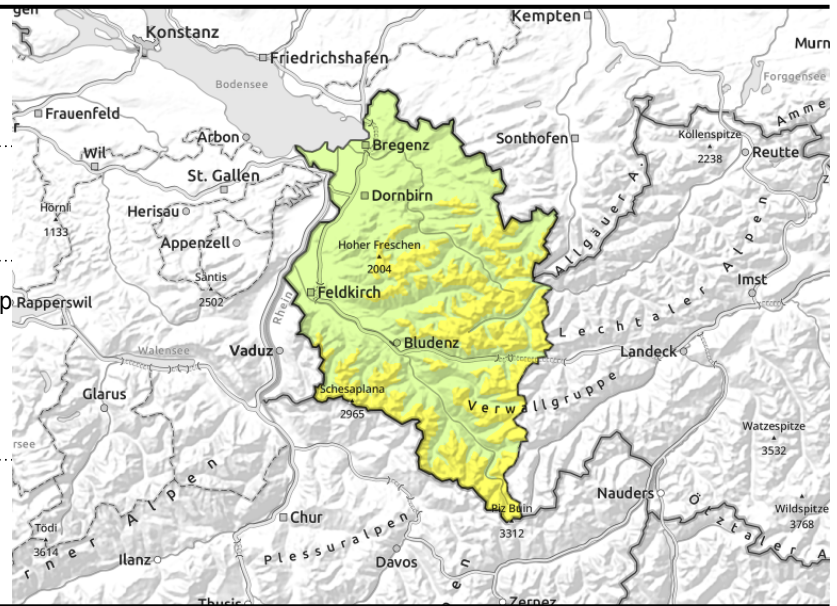
Danger ratings



Expositions



Rätikon West, Rätikon Ost, Silvretta, Verwall, Lechquellengebirge, Lechtaler Alpen, Bregenzerwaldgebirge, Voralpenbereich, Allgäuer Alpen



with increasing altitude in steep ridgeline terrain, wind-loaded gullies and bowls and behind abrupt discontinuities in the terrain



above 2200 m - blanketed weak layers are difficult to recognize

Main danger: fresh and older snowdrifts and weak layers on steep shady slopes

At high altitudes, fresh trigger-sensitive snowdrift accumulations have been generated by moderate-to-strong SW-W winds. Danger zones are found esp. in steep ridgeline terrain, in wind-loaded gullies and bowls and behind abrupt discontinuities in the terrain. Fresh and older snowdrifts can be triggered even by one single skier. In addition, above 2200 m, particularly on steep shady slopes, there is an unfavourably layered snowpack. In places, slab avalanches can be triggered even by one sole winter sports enthusiast, sometimes reaching medium size. This must be taken into consideration in all activities in outlying terrain. Apart the risks of being buried in snow masses, the danger of being swept along and forced to take a fall are also to be heeded.

Snowpack structure

On Wednesday, skies were mostly overcast, a few cm of fresh snow was registered above 1300-1400 m. Winds were light to moderate from SW to W, strong in gusts, thus generating new snowdrift accumulations. An additional 10 cm of fresh snow is expected in the Prealps, elsewhere only a little or else it will remain dry. The fresh snow and drifts lie atop a very cold, loose snowpack, sometimes atop surface hoar. These are prone to triggering. In addition, particularly on north-facing slopes above 2200 m there are crusts inside the snowpack where faceted crystals have formed. These can be triggered by the loading of winter sports enthusiasts; they are not visible to the naked eye.

Weather

Wednesday night: skies will be heavily overcast, some wind is expected. Light snowfall above 1300-1500 in the early part of the night. Thursday: dry, by and large, but windy. The milder temperatures will make the snow quality deteriorate. Initially, sunny. Clouds from the south will soon move in, a few snowflakes are possible in the afternoon. At 2000 m: -2 to 0 degrees. Brisk S/W winds, strong gusts in the foehn lanes.

Outlook

Friday: frequent fog, light to moderate snowfall. Not much fresh snow is anticipated. Avalanche danger will not change significantly.

Translated by Jeffrey McCabe, www.creativtrans.com

Avalanche problems



Danger ratings



Expositions

