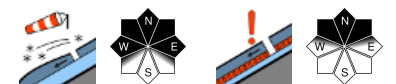


**Predominantly low avalanche danger amid minor snowfall.
Moderate avalanche danger at high altitudes.**



Rätikon West, Rätikon Ost, Silvretta, Verwall, Lechquellengebirge, Lechtaler Alpen, Bregenzerwaldgebirge, Voralpenbereich, Allgäuer Alpen



Avalanche problems



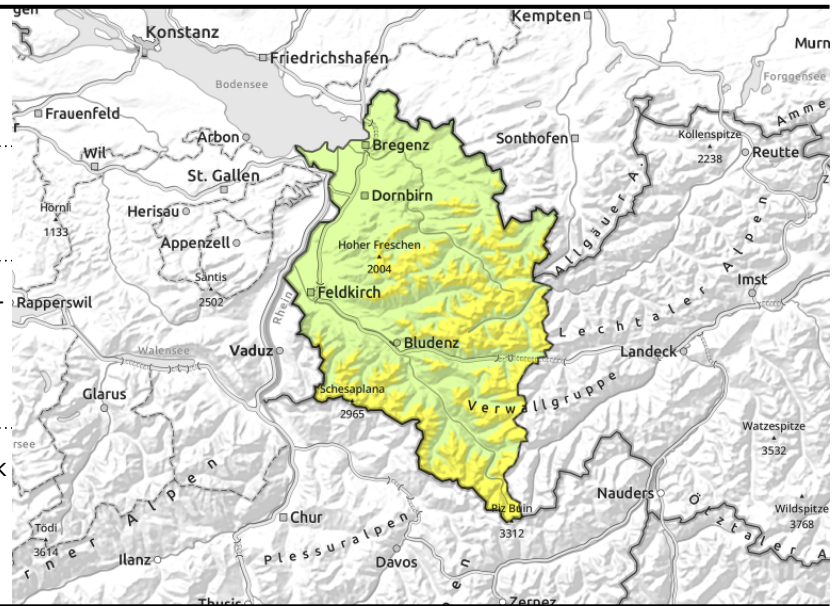
Danger ratings



Expositions



Rätikon West, Rätikon Ost, Silvretta, Verwall, Lechquellengebirge, Lechtaler Alpen, Bregenzerwaldgebirge, Voralpenbereich, Allgäuer Alpen



at ascending altitudes, in wind-loaded gullies, bowls, behind abrupt discontinuities in the terrain



above 2200 m: blanketed weak layers difficult to recognize

Main danger: small fresh+older snowdrift accumulations and weak snow on very steep shady slopes

Predominantly low danger, moderate avalanche danger at high altitudes. Danger zones are found mainly above 2000 m. Small-sized fresh and older snowdrift masses in wind-loaded gullies and bowls and behind abrupt discontinuities in the terrain are prone to triggering. In addition, above 2200 m on very steep shady slopes there are unfavourable layers in the old snow cover. Small, in isolated cases also medium sized avalanches can be triggered even by one single winter sports enthusiast. This must be taken into consideration in all activities in outlying terrain. Naturally triggered small loose slides are possible in very steep terrain. Also in zones where danger is low there are isolated dangerous spots in extremely steep terrain. Winter sports enthusiasts can trigger small slabs or loose slides in those areas. Apart from the danger of being buried in snow masses, the risks of being swept along and forced to take a fall need to be given due consideration.

Snowpack structure

There was up to 5 cm of fresh snow widespread, up to 10 cm in places. Not much wind influence as it fell, only small local snowdrift masses accumulated. These, plus older snowdrift accumulations, are prone to triggering with ascending altitude, sometimes blanketed by surface hoar, making the bonding of the fresh snow weak. Particularly on very steep shady slopes above 2200 m, the old snowpack from late autumn is still expansively metamorphosed (faceted). Such intermediate layers are prone to triggering when additionally loaded by winter sports enthusiasts, yet are not recognizable. All in all, the snowpack is still quite irregular: wind-exposed zones are often bare, with only a bit of fresh snow, gullies and bowls and zones behind abrupt discontinuities in the terrain are filled with snowdrifts. Ski tours and activities in outlying terrain are not yet rewarding at low and intermediate altitudes. Further information is not yet available to the Avalanche Warning Service.

Weather

On Saturday night: gray skies, intermittent snowfall, mostly about 10 cm, 10-30 cm possible in the Allgau. Sunday: beginning with heavy cloud, light snowfall (not more than 10 cm). The precipitation will slacken off, the sun come out. Very cold, arctic air masses are on the way. Temperature at 2000 m. -12 degrees. Light N/NW winds at high altitude.

Avalanche problems



Danger ratings



Expositions



11.12.2022

Outlook

Monday: Sunshine plus clouds, very cold. Intermittently strong winds will generate new snowdrifts (small) in ridgeline and pass areas. Size and spread will increase, but avalanche danger levels are not expected to rise significantly.

Translated by Jeffrey McCabe, www.creativtrans.com

Avalanche problems



Danger ratings



Expositions

