

Trigger-sensitive snowdrifts and old snow at high altitudes



2200 m

Rätikon West, Rätikon Ost, Silvretta, Verwall, Lechquellengebirge, Lechtaler Alpen, Bregenzerwaldgebirge, Voralpenbereich, Allgäuer Alpen



Avalanche problems



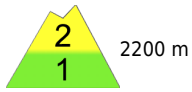
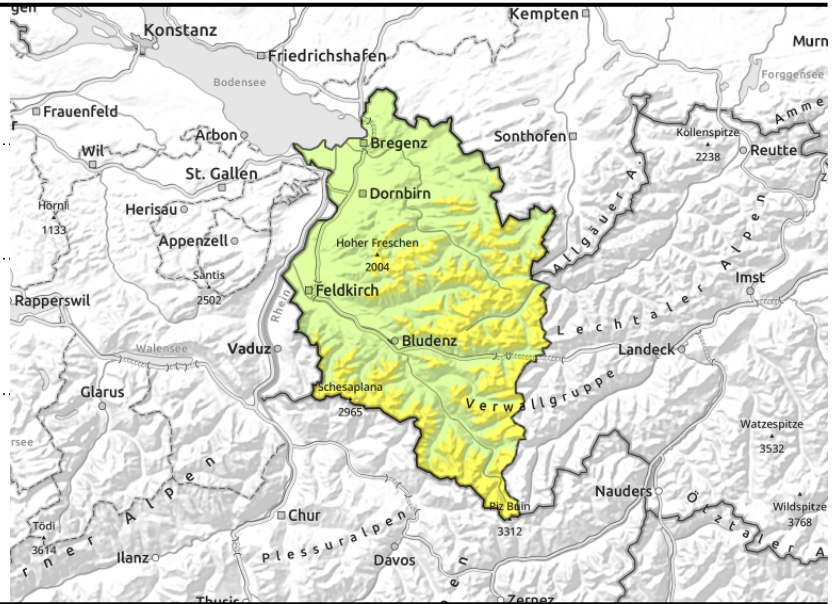
Danger ratings



Expositions



Rätikon West, Rätikon Ost, Silvretta, Verwall, Lechquellengebirge, Lechtaler Alpen, Bregenzerwaldgebirge, Voralpenbereich, Allgäuer Alpen



wind-loaded gullies and bowls, behind abrupt discontinuities in the terrain

blanked weak layers difficult to recognize

Snowdrifts and, in some places, weak old snow are the main danger. Heed fresh drifts at high altitudes.

Danger is still low for the most part, moderate in some higher altitude places. Avalanche prone locations are found especially above 2200 m in very steep shady terrain. Also, with increasing altitude, fresh and older snowdrift accumulations in wind-loaded gullies and bowls and behind abrupt discontinuities in the terrain are a problem. One single winter sports enthusiast can trigger small slabs or slides, possibly attaining medium size avalanches, this needs to be taken into consideration in outlying terrain. Naturally triggered small slides or small glide-snow avalanches can be released on steep grassy slopes. Even in zones with low danger there are isolated places where avalanches are prone to triggering in steep terrain. The risks of being forced to take a fall outweigh those of being buried in snow masses.

Snowpack structure

The latest bout of snowfall has been transported by strong velocity winds in ridgeline and pass areas, thereby generating fresh snowdrift accumulations. These, together with older drifted masses which were formed by foehn winds on, can be triggered as small slab avalanches with increasing altitude, Particularly in very steep shady terrain above 2200 m, the old snowpack from late autumn is faceted in places. The snowpack is highly irregular. Wind-exposed zones are often bare, gullies and bowls and behind abrupt discontinuities often overflowing with drifts. Ski tours and activities in outlying terrain are not yet rewarding. Additional information is not yet available to the Avalanche Warning Services.

Weather

Thursday night: clouds moving in from the south. On the Arlberg, in Verwall, in the Silvretta, light snowfall is possible in the latter part of the night, in the other regions it will remain dry. Friday: compact clouds above the summits will hamper the sun, generate very flat light conditions. Summits in the Silvretta and Rätikon will often be shrouded in cloud. Towards evening in the Prealps and Bregenzerwald mountains, light snowfall will set in. At 2000 m: -3 degrees. High altitude winds: moderate to brisk SW winds, shifting to westerly in the afternoon.

Outlook

Saturday: clouds will be heavy, intermittent light snowfall, moderate in the afternoon. Depending on

Avalanche problems



Danger ratings



Expositions

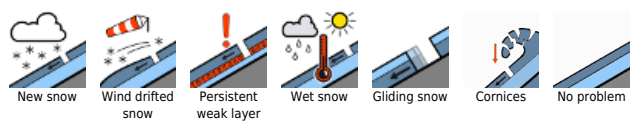


09.12.2022

amounts of fresh snow, avalanche danger levels could increase.

Translated by Jeffrey McCabe, www.creativtrans.com

Avalanche problems



Danger ratings



Expositions

