

Small snowdrifts and old snow prone to triggering at high altitudes



2200 m

Rätikon West, Rätikon Ost, Silvretta, Verwall, Lechquellengebirge, Lechtaler Alpen, Bregenzerwaldgebirge, Voralpenbereich, Allgäuer Alpen



Avalanche problems



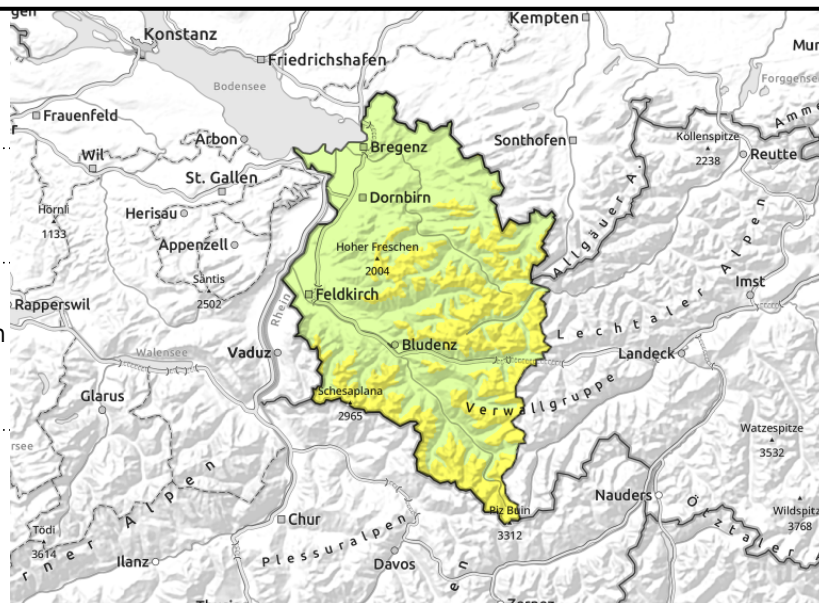
Danger ratings



Expositions



Rätikon West, Rätikon Ost, Silvretta, Verwall, Lechquellengebirge, Lechtaler Alpen, Bregenzerwaldgebirge, Voralpenbereich, Allgäuer Alpen



wind-loaded gullies, bowls, behind abrupt discontinuities in the terrain, increasing during the day



blanketed weak layers difficult to recognize

Snowdrifts and, in some places, weak old snow are the main danger; strong SW winds forming new drifts

Danger is still low for the most part, moderate in some higher altitude places. Isolated danger zones are found especially above 2200 m in very steep shady terrain. Also, with increasing altitude, fresh and older snowdrift accumulations in wind-loaded gullies and bowls and behind abrupt discontinuities in the terrain are a problem. Such danger zones will increase in spread and size during the day due to intensifying SW winds. One single winter sports enthusiast can trigger small slabs or slides, reaching medium size avalanches, this needs to be taken into consideration in outlying terrain. Naturally triggered small slides or small glide-snow avalanches can be released on steep grassy slopes. Even in zones with low danger there are isolated places where avalanches are prone to triggering in steep terrain. The risks of being forced to take a fall outweigh those of being buried in snow masses.

Snowpack structure

The latest bout of snowfall has been transported by strong velocity winds in ridgeline and pass areas, thereby generating fresh snowdrift accumulations. These, together with older drifted masses which were formed by foehn winds on the weekend, can be triggered as small slab avalanches with increasing altitude, Particularly in very steep shady terrain above 2200 m, the old snowpack from late autumn is faceted in places. The uppermost layers of fresh snow and drifts are poorly bonded with the old snow or with each other. These danger zones are not recognizable! Below 1000 m and on sunny slopes, there is only a shallow snowpack, often with gaps. Even in other areas the snowpack is highly irregular. Wind-exposed zones are often bare, gullies and bowls and behind abrupt discontinuities often overflowing with drifts. Ski tours and activities in outlying terrain are not yet rewarding. Additional information is not yet available to the Avalanche Warning Services. On sunny slopes and at low altitudes there is generally only a thin, incohesive snowpack.

Weather

Wednesday night: skies will clear up incrementally. Thursday: unhindered sunshine in the mountains all day long, hardly any clouds, relatively cold with fresh SW winds in the foehn lanes in particular will make it seem even colder. At 2000 m: -5 degrees; high altitude winds: moderate to brisk, stronger in the foehn mountains, from SW.

Avalanche problems



Danger ratings



Expositions



08.12.2022

Outlook

Friday: predominantly cloudy skies, a bit of snowfall in the northern regions. Avalanche danger levels are not expected to change significantly.

Translated by Jeffrey McCabe, www.creativtrans.com

Avalanche problems



Danger ratings



Expositions

