

## Mostly favorable conditions - Predominantly low danger

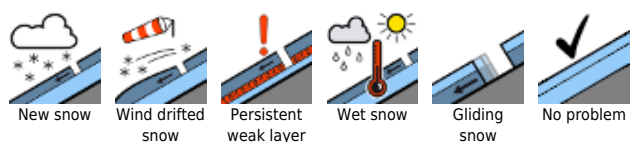


2400 m

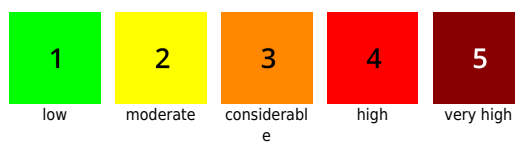
Lechtaler Alpen, Verwall, Rätikon Ost, Rätikon West, Bregenzerwaldgebirge, Allgäuer Alpen, Silvretta, Lechquellengebirge



### Avalanche problems



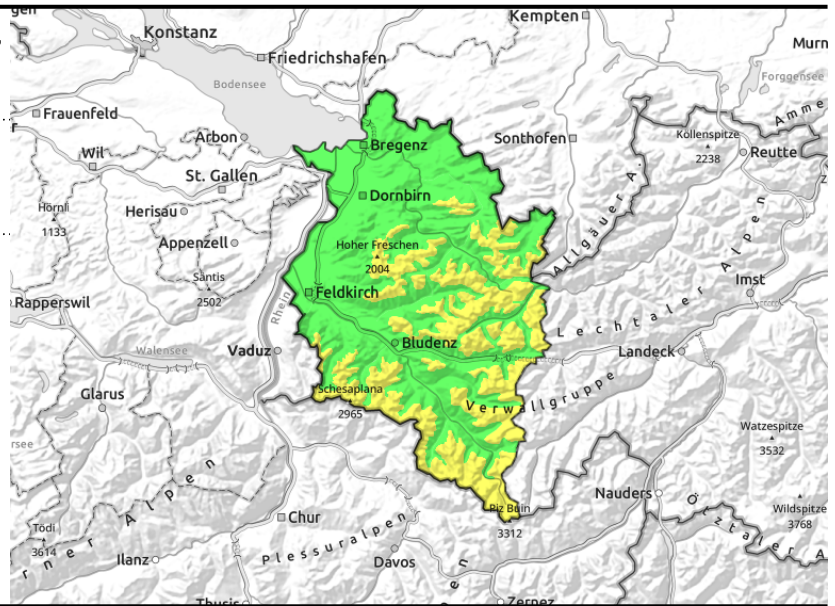
### Danger ratings



### Expositions



**Lechtaler Alpen, Verwall, Rätikon Ost, Rätikon West, Bregenzerwaldgebirge, Allgäuer Alpen, Silvretta, Lechquellengebirge**



**Take heed of small older snowdrifts at high altitudes. Wet avalanches possible due to solar radiation and daytime warming.**

Avalanche danger is predominantly low. Older snowdrift accumulations can be triggered even by one sole person. Avalanche prone locations occur particularly on very steep shady slopes, in ridgeline terrain and in wind-loaded gullies and bowls. On very steep shady slopes, weak layers in the old snowpack can be triggered in isolated cases. Apart from the dangers of being buried in snow, the risks of being swept along and forced to take a fall require alertness. On very steep grass-covered slopes, small glide-snow avalanches continue to be possible.

**Snowpack structure**

With ascending altitude and in high alpine regions, older snowdrift accumulations are still evident, their bonding is often inadequate, particularly on steep shady slopes. Small to medium slab avalanches can be triggered there, either inside the layers of drifts or in the near-surface part of the snowpack. Following a night of cold clear skies the snowpack is generally compact through the morning, and stable. At low and intermediate altitudes there is little snow on the ground. Little information is available about the snowpack itself.

**Weather**

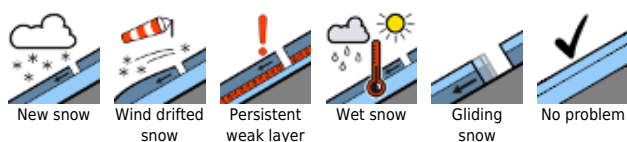
High-pressure front conditions will bring dry weather and only light winds. Brilliant sunshine, scattered convective clouds this afternoon. The zero-degree level will ascend to nearly 2700 m. Local thermic wind systems could intensify starting around midday. At 2000 m: -2 to +4 degrees. Light northerly winds.

**Outlook**

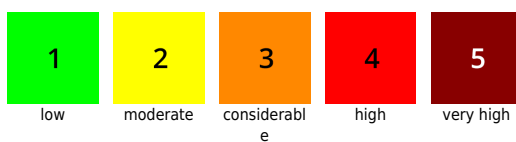
Following a clear, cold night, Friday will be very sunny. The zero-degree level will ascend to 3000 m. Avalanche danger will remain mostly low, but increase during the daytime as temperatures rise.

Translated by Jeffrey McCabe, [www.creativtrans.com](http://www.creativtrans.com)

**Avalanche problems**



**Danger ratings**



**Expositions**

