

Mostly favorable conditions - Small snowdrifts at high altitudes - Medium danger

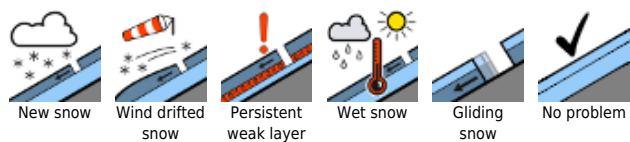


2200 m

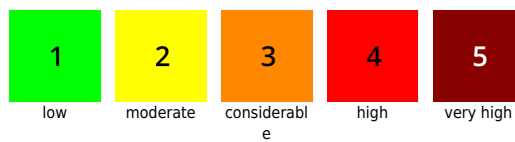
Lechtaler Alpen, Verwall, Rätikon Ost, Rätikon West, Bregenzerwaldgebirge, Allgäuer Alpen, Silvretta, Lechquellengebirge



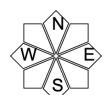
Avalanche problems



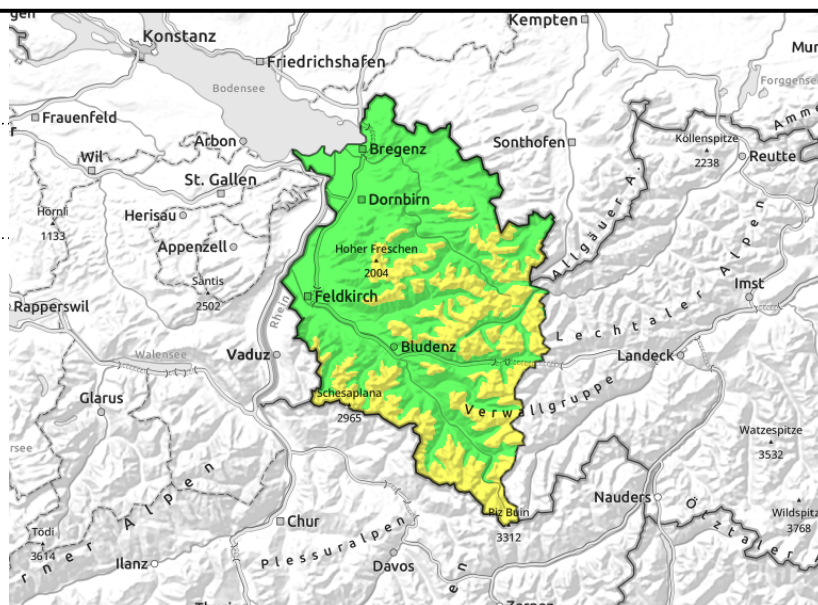
Danger ratings



Expositions



Lechtaler Alpen, Verwall, Rätikon Ost, Rätikon West, Bregenzerwaldgebirge, Allgäuer Alpen, Silvretta, Lechquellengebirge



Take heed of small fresh snowdrifts at high altitudes. Wet slides possible due to solar radiation and daytime warming.

At high altitudes avalanche danger is predominantly low. Small fresh snowdrift accumulations can be triggered even by one sole person. Avalanche prone locations occur particularly on very steep shady slopes, in ridgeline terrain and in wind-loaded gullies and bowls. On very steep shady slopes, isolated weak layers in the old snowpack can be triggered. In zones where the snowpack is thoroughly wet, small wet-snow avalanches are possible. On very steep grass-covered slopes, small glide-snow avalanches continue to be possible.

Snowpack structure

At high altitudes there was up to 10 cm of fresh snow registered. Accompanied by intermittently strong velocity winds, it was transported and small fresh snowdrift accumulations were generated. In high alpine regions mostly on very steep slopes, there are still old snowpack surfaces; with ascending altitude, bonding of fresh snow to these surfaces deteriorates, small-to-medium slab avalanches can trigger there in the fresh snow or the near-surface layers. At low and intermediate altitudes there is little snow on the ground. Little information is available about the snowpack itself.

Weather

Residual clouds during the morning, sunshine will then dominate. Relatively cool. At 2000 m: -6 to 0 degrees. Light northerly winds at high altitude.

Outlook

Nighttime skies will be clear. Thursday and Friday will be very sunny, once again with springtime temperatures. Avalanche danger will be predominantly low, increasing slightly due to daytime warming.

Translated by Jeffrey McCabe, www.creativtrans.com

Avalanche problems



Danger ratings



Expositions

