

Mostly favorable conditions - Slight increase in avalanche danger at high altitudes

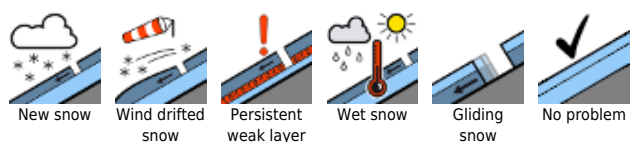


2200 m

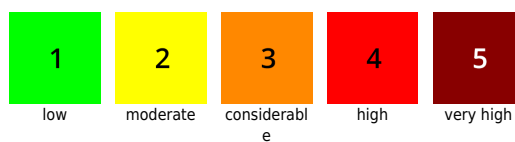
Lechquellengebirge, Lechtaler Alpen, Verwall, Rätikon Ost, Rätikon West, Bregenzerwaldgebirge, Allgäuer Alpen, Silvretta



Avalanche problems



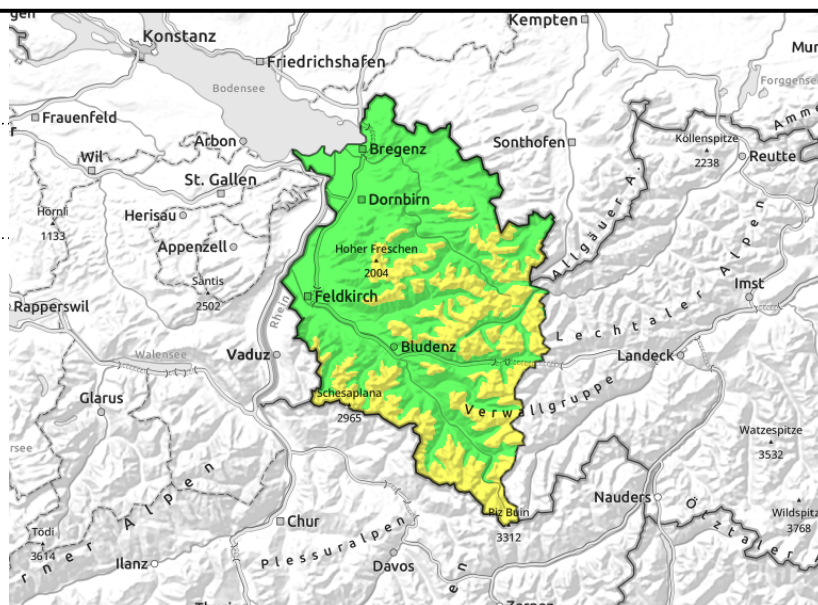
Danger ratings



Expositions



Lechquellengebirge, Lechtaler Alpen, Verwall, Rätikon Ost, Rätikon West, Bregenzerwaldgebirge, Allgäuer Alpen, Silvretta



Alert: small fresh snowdrifts at high altitudes. Wet slides due to solar radiation and daytime warmth.

At high altitudes avalanche danger is predominantly low. Small fresh snowdrift accumulations can be triggered even by one sole person. Avalanche prone locations occur particularly on very steep shady slopes, in ridgeline terrain and in wind-loaded gullies and bowls. On very steep slopes, increasingly frequent loose-snow slides from the fresh snow are possible. On very steep shady slopes in high alpine regions, isolated weak layers in the old snowpack can be triggered. In zones where the snowpack is thoroughly wet, small wet-snow avalanches are possible. On very steep grass-covered slopes, small glide-snow avalanches continue to be possible.

Snowpack structure

At high altitudes there was a small amount of fresh snow registered. Accompanied by intermittently strong velocity winds, it was transported and small fresh snowdrift accumulations were generated. In high alpine regions mostly on very steep slopes, there are still old snowpack surfaces; with ascending altitude, bonding of fresh snow to these surfaces deteriorates, small-to-medium slab avalanches can trigger there in the fresh snow or the near-surface layers. At low and intermediate altitudes there is little snow on the ground.

Weather

Heavy cloud cover will move in from the northwest, bringing snow showers. The snowfall level lies at 1500 m. This afternoon, variable visibility, further showers and sunny intervals. At 2000 m: 0 degrees. Moderat to strong, and gust, W/SW winds at high altitudes.

Outlook

More showers during the night tonight. Wednesday will be sunny and dry, avalanche danger is not expected to change significantly.

Translated by Jeffrey McCabe, www.creativtrans.com

Avalanche problems



Danger ratings



Expositions

