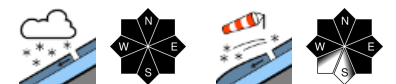


## Fresh snow + wind at high altitudes: slightly increasing avalanche danger



Lechquellengebirge, Lechtaler Alpen, Verwall, Rätikon Ost, Rätikon West, Bregenzerwaldgebirge, Allgäuer Alpen, Silvretta



### Avalanche problems



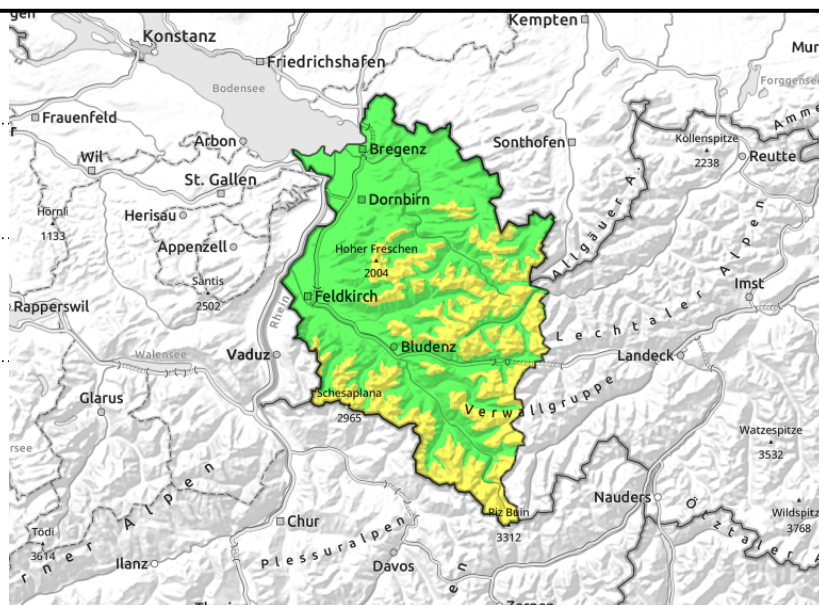
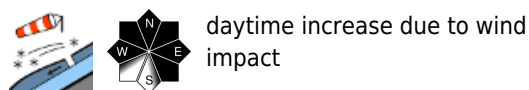
### Danger ratings



### Expositions



**Lechquellengebirge, Lechtaler Alpen, Verwall, Rätikon Ost, Rätikon West, Bregenzerwaldgebirge, Allgäuer Alpen, Silvretta**



**Alert: small fresh snowdrifts at high altitudes. Wet slides possible in rain-impacted regions.**

At high altitudes avalanche danger is moderate. Avalanche prone locations occur particularly on very steep shady slopes, in ridgeline terrain and in wind-loaded gullies and bowls. Frequency and size increase with wind impact as the day progresses. Fresh drifts can be triggered even by one sole person. On very steep slopes, increasingly frequent loose-snow slides from the fresh snow are possible. On very steep shady slopes in high alpine regions, isolated weak layers in the old snowpack can be triggered. In zones where the snowpack is thoroughly wet, small wet-snow avalanches are possible. On very steep grass-covered slopes, small glide-snow avalanches continue to be possible.

**Snowpack structure**

Above 1500 m there was 10-15 cm of fresh snow registered, locally up to 20 cm. Accompanied by intermittently strong velocity winds, it was transported and small fresh snowdrift accumulations were generated. In high alpine regions mostly on very steep slopes, there is still an old snowpack; with ascending altitude, bonding of fresh snow to these surfaces deteriorates, small-to-medium slab avalanches can trigger there in the fresh snow or the near-surface layers. At low and intermediate altitudes there is little snow on the ground. Rain influence is weakening the snow further.

**Weather**

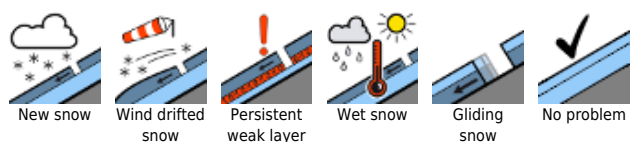
Repeated rain/snow showers (snowfall level: 1500-2000m) and graupel showers. Intermittent sunshine is possible, but brief. It remains cool. At 2000 m: -3 to +1 degree. Brisk to strong westerly winds.

**Outlook**

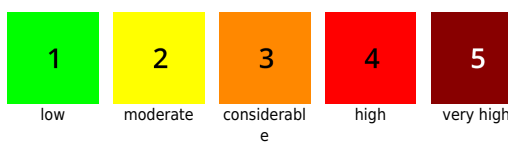
Conditions will remain cool and variable, avalanche danger is not expected to change significantly.

Translated by Jeffrey McCabe, [www.creativtrans.com](http://www.creativtrans.com)

**Avalanche problems**



**Danger ratings**



**Expositions**

