



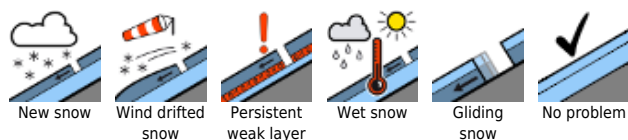
**Favorable conditions in the morning. Swift increase of wet-snow avalanche danger.**



Lechquellengebirge, Lechtaler Alpen, Verwall, Rätikon Ost, Rätikon West, Bregenzerwaldgebirge, Allgäuer Alpen, Silvretta



**Avalanche problems**

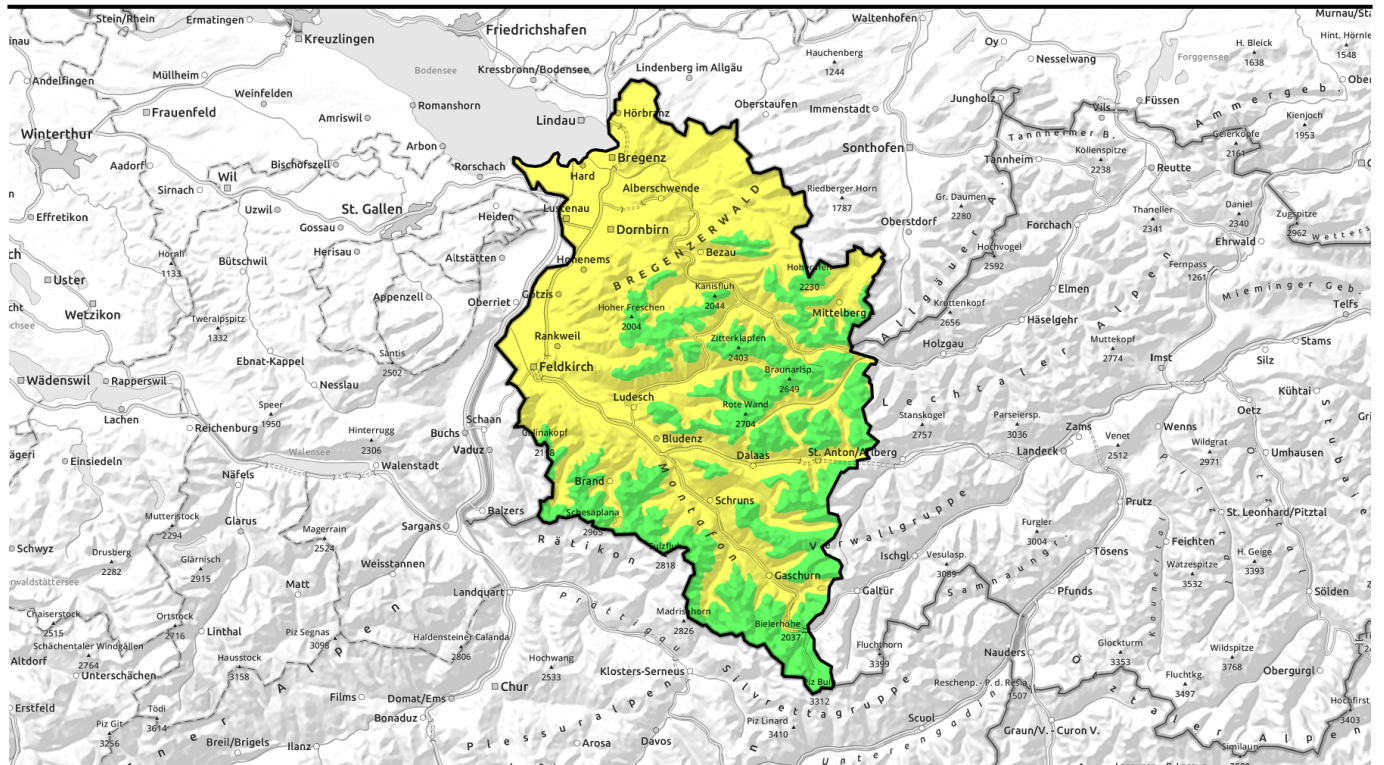


**Danger ratings**



**Expositions**





## Morgens günstige Bedingungen - früher Anstieg der Gefahr von nassen Lawinen im Tagesverlauf

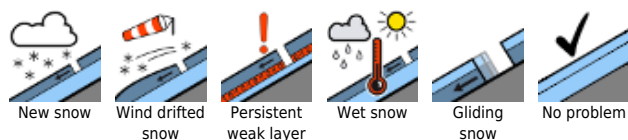


Lechquellengebirge, Lechtaler Alpen, Verwall, Rätikon Ost, Rätikon West, Bregenzerwaldgebirge, Allgäuer Alpen, Silvretta

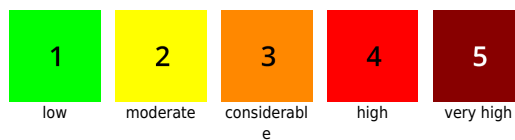


2400 m

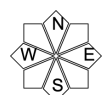
### Avalanche problems



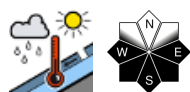
### Danger ratings



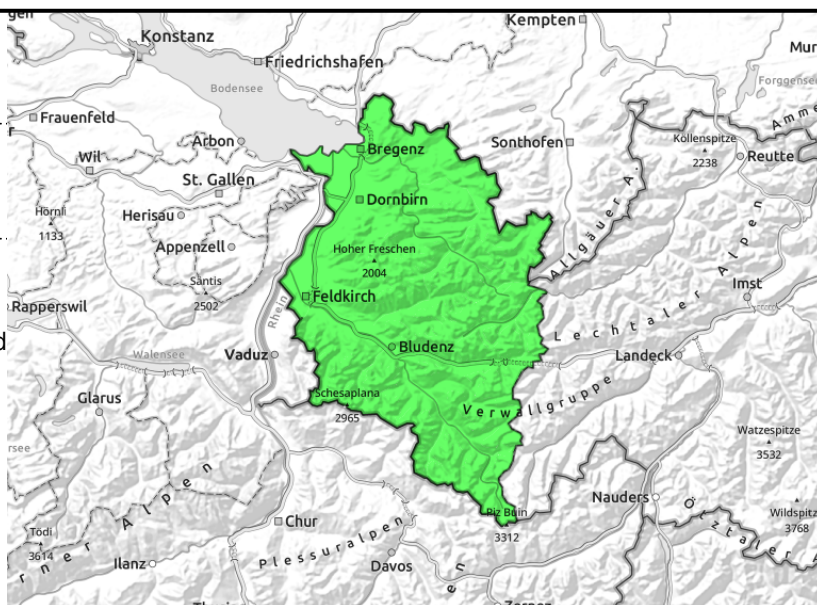
### Expositions



**Lechquellengebirge, Lechtaler Alpen, Verwall, Rätikon Ost, Rätikon West, Bregenzerwaldgebirge, Allgäuer Alpen, Silvretta**



increasing danger of wet-snow avalanches due to solar radiation, daytime warming and rain



## Increase in wet-snow avalanche danger below 2400m during daytime

Predominantly favorable conditions and low danger prevail in the morning. Due to solar radiation, daytime warming and rainfall, danger of moist slides increases slightly below 2400m. Naturally triggered or low-additional-loading triggered small-to-medium wet-snow avalanches occur especially on E/S/W facing slopes. Backcountry skiing tours and activities in outlying terrain should be launched and brought to an end early in the day. In regions where snowfall has been heavy on very steep grass-covered slopes, glide-snow avalanches continue to be possible. Caution below glide cracks. Weak layers in the old snow can often be triggered in high alpine regions, particularly by large additional loading small-to-medium avalanches can be triggered. Danger zones especially on very steep shady slopes.

### Snowpack structure

Nighttime skies were quite warm, partly cloudy., A crust formed which is generally capable of bearing loads only at high altitudes. During the day due to solar radiation and warming, forfeits its firmness, increasing the danger of wet-snow avalanches somewhat. At low and intermediate altitudes there is not much snow on the ground. In high alpine regions, particularly on very steep shady slopes, there are still isolated danger zones for dry-snow avalanches; small-to-medium slabs can trigger in the near-surface layers or at the Sahara dust layer.

### Weather

Southerly foehn wind, thus, variably cloudy conditions. The foehn will intensify during the day, compact cloudbanks will move through at intermediate altitude, the instable air will tend to generate showers particularly in the northern regions. Subsequently, some precipitation from the south can be expected. At 2000 m: 5 degrees. Strong velocity southerly foehn wind especially in foehn exposed regions.

### Outlook

The forecast precipitation will generate fresh, trigger-sensitive snowdrift accumulations at high altitude which require alertness. As temperatures drop on Sunday, the danger of moist and wet slides will recede.

#### Avalanche problems



#### Danger ratings



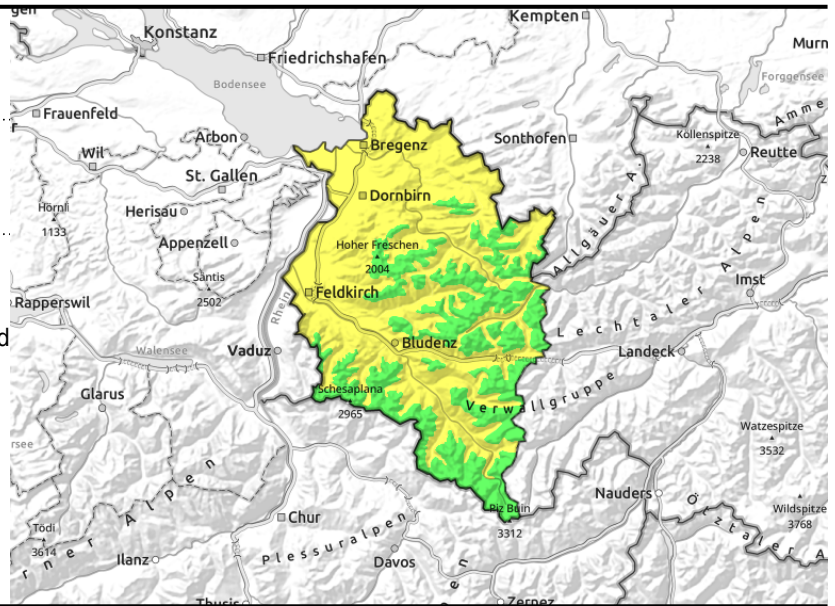
#### Expositions



**Lechquellengebirge, Lechtaler Alpen, Verwall, Rätikon Ost, Rätikon West, Bregenzerwaldgebirge, Allgäuer Alpen, Silvretta**



increasing danger of wet-snow avalanches due to solar radiation, daytime warming and rain



## Increase in wet-snow avalanche danger below 2400m during daytime

Predominantly favorable conditions and low danger prevail in the morning. Due to solar radiation, daytime warming and rainfall, danger of moist slides increases slightly below 2400m. Naturally triggered or low-additional-loading triggered small-to-medium wet-snow avalanches occur especially on E/S/W facing slopes. Backcountry skiing tours and activities in outlying terrain should be launched and brought to an end early in the day. In regions where snowfall has been heavy on very steep grass-covered slopes, glide-snow avalanches continue to be possible. Caution below glide cracks. Weak layers in the old snow can often be triggered in high alpine regions, particularly by large additional loading small-to-medium avalanches can be triggered. Danger zones especially on very steep shady slopes.

### Snowpack structure

Nighttime skies were quite warm, partly cloudy., A crust formed which is generally capable of bearing loads only at high altitudes. During the day due to solar radiation and warming, forfeits its firmness, increasing the danger of wet-snow avalanches somewhat. At low and intermediate altitudes there is not much snow on the ground. In high alpine regions, particularly on very steep shady slopes, there are still isolated danger zones for dry-snow avalanches; small-to-medium slabs can trigger in the near-surface layers or at the Sahara dust layer.

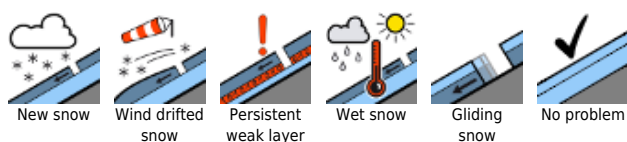
### Weather

Southerly foehn wind, thus, variably cloudy conditions. The foehn will intensify during the day, compact cloudbanks will move through at intermediate altitude, the instable air will tend to generate showers particularly in the northern regions. Subsequently, some precipitation from the south can be expected. At 2000 m: 5 degrees. Strong velocity southerly foehn wind especially in foehn exposed regions.

### Outlook

The forecast precipitation will generate fresh, trigger-sensitive snowdrift accumulations at high altitude which require alertness. As temperatures drop on Sunday, the danger of moist and wet slides will recede.

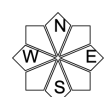
#### Avalanche problems



#### Danger ratings



#### Expositions



# 23.04.2022, afternoon

Translated by Jeffrey McCabe, [www.creativtrans.com](http://www.creativtrans.com)

## Avalanche problems



New snow



Wind drifted snow



Persistent weak layer



Wet snow



Gliding snow



No problem

## Danger ratings



1

low



2

moderate



3

considerable



4

high



5

very high

## Expositions

