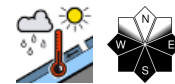


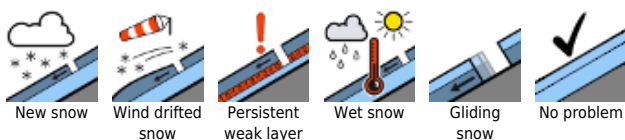
**Favorable conditions in the morning. Slight daytime cycle of wet-snow avalanche danger.**



Lechquellengebirge, Lechtaler Alpen, Verwall, Silvretta, Rätikon Ost, Rätikon West, Bregenzerwaldgebirge, Allgäuer Alpen



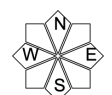
**Avalanche problems**

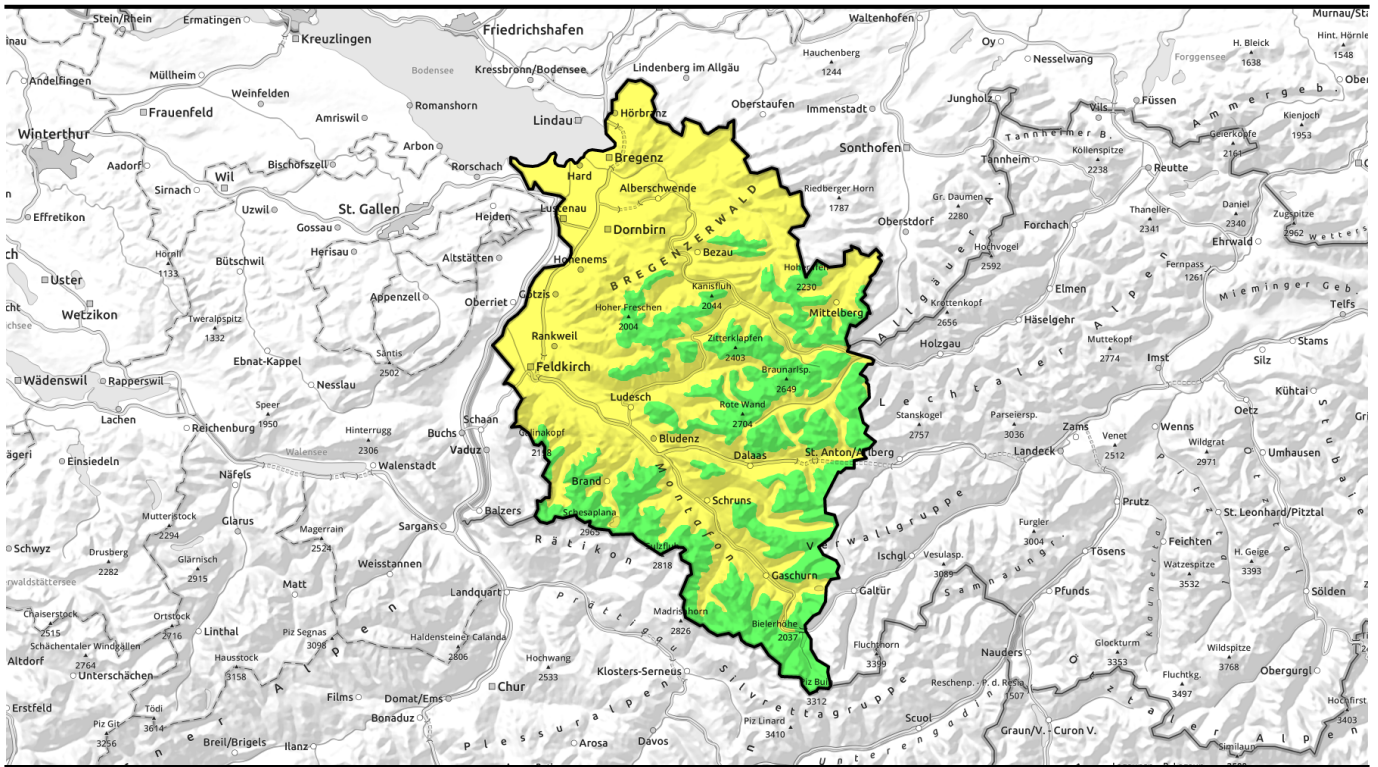


**Danger ratings**



**Expositions**





## Am Vormittag günstige Bedingungen - geringer Tagesgang der Nassschneelawinengefahr.

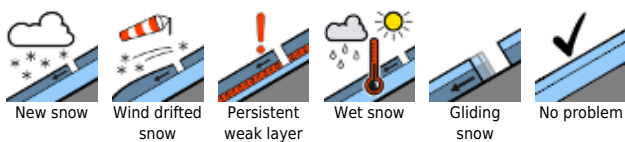


Lechquellengebirge, Lechtaler Alpen, Verwall, Silvretta, Rätikon Ost, Rätikon West, Bregenzerwaldgebirge, Allgäuer Alpen

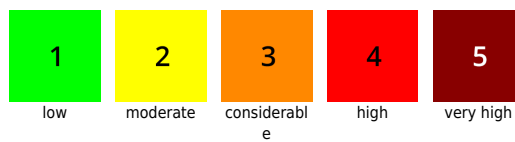


2400 m

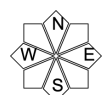
### Avalanche problems



### Danger ratings



### Expositions

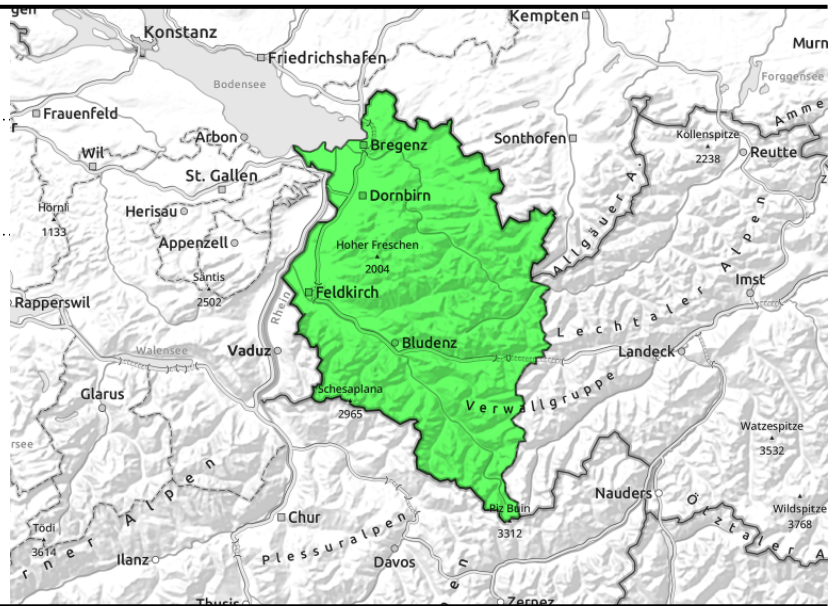


# 18.04.2022, morning

Lechquellengebirge, Lechtaler Alpen, Verwall, Silvretta, Rätikon Ost, Rätikon West, Bregenzerwaldgebirge, Allgäuer Alpen



due to solar radiation and daytime warming



## Slight increase in wet-snow avalanche danger below 2400m during daytime

Predominantly favorable conditions and low danger prevail in the morning. Due to solar radiation and daytime warming, avalanche danger increases slightly below 2400m. Naturally triggered or low-additional-loading triggered small-to-medium wet-snow avalanches occur especially on E/S/W facing slopes. Backcountry skiing tours and activities in outlying terrain should be brought to an end early in the day. In regions where snowfall has been heavy on very steep grass-covered slopes, glide-snow avalanches continue to be possible. Caution below glide cracks. Weak layers in the old snow can often be triggered in high alpine regions, particularly by large additional loading small-to-medium avalanches can be triggered. Danger zones especially on very steep shady slopes.

### Snowpack structure

During the cold, clear night with good outgoing radiation a crust formed which is generally capable of bearing loads. The thoroughly moist snowpack stabilized superficially. On sunny slopes this crust softens during the day due to solar radiation and daytime warming, forfeits its firmness, increasing the danger of wet-snow avalanches somewhat. At low and intermediate altitudes there is not much snow on the ground. On shady slopes at high altitudes the snowpack remains frozen. In high alpine regions, particularly on very steep shady slopes, there are still isolated danger zones for dry-snow avalanches; small-to-medium slabs can trigger in the near-surface layers or at the Sahara dust layer.

### Weather

Sunny but cool weather prevails. Apart from high-altitude thin cloudbanks far above summit level, only harmless cumulus clouds are expected in the afternoon. Outstanding visibility. At 2000 m: -4 to +1 degree. Moderate northerly winds.

### Outlook

Sunny weather will persist in the next few days. The avalanche situation is generally favorable in early morning, then as the day unfolds, danger of wet-snow avalanches increases slightly due to solar radiation and daytime warming.

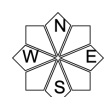
#### Avalanche problems



#### Danger ratings



#### Expositions

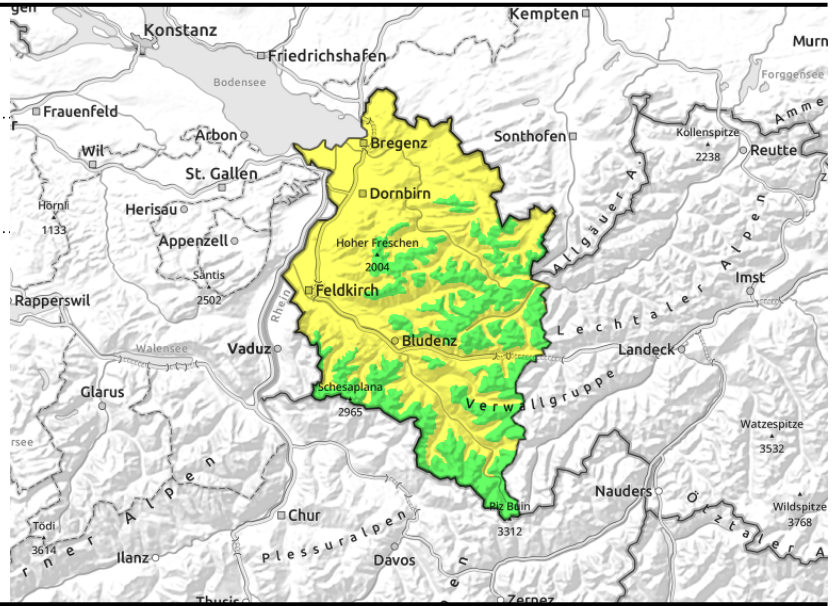


# 18.04.2022, afternoon

Lechquellengebirge, Lechtaler Alpen, Verwall, Silvretta, Rätikon Ost, Rätikon West, Bregenzerwaldgebirge, Allgäuer Alpen



due to solar radiation and daytime warming



## Slight increase in wet-snow avalanche danger below 2400m during daytime

Predominantly favorable conditions and low danger prevail in the morning. Due to solar radiation and daytime warming, avalanche danger increases slightly below 2400m. Naturally triggered or low-additional-loading triggered small-to-medium wet-snow avalanches occur especially on E/S/W facing slopes. Backcountry skiing tours and activities in outlying terrain should be brought to an end early in the day. In regions where snowfall has been heavy on very steep grass-covered slopes, glide-snow avalanches continue to be possible. Caution below glide cracks. Weak layers in the old snow can often be triggered in high alpine regions, particularly by large additional loading small-to-medium avalanches can be triggered. Danger zones especially on very steep shady slopes.

### Snowpack structure

During the cold, clear night with good outgoing radiation a crust formed which is generally capable of bearing loads. The thoroughly moist snowpack stabilized superficially. On sunny slopes this crust softens during the day due to solar radiation and daytime warming, forfeits its firmness, increasing the danger of wet-snow avalanches somewhat. At low and intermediate altitudes there is not much snow on the ground. On shady slopes at high altitudes the snowpack remains frozen. In high alpine regions, particularly on very steep shady slopes, there are still isolated danger zones for dry-snow avalanches; small-to-medium slabs can trigger in the near-surface layers or at the Sahara dust layer.

### Weather

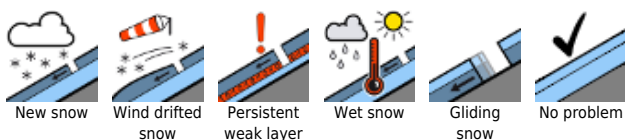
Sunny but cool weather prevails. Apart from high-altitude thin cloudbanks far above summit level, only harmless cumulus clouds are expected in the afternoon. Outstanding visibility. At 2000 m: -4 to +1 degree. Moderate northerly winds.

### Outlook

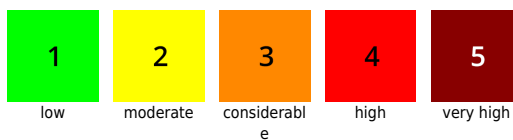
Sunny weather will persist in the next few days. The avalanche situation is generally favorable in early morning, then as the day unfolds, danger of wet-snow avalanches increases slightly due to solar radiation and daytime warming.

Translated by Jeffrey McCabe, [www.creativtrans.com](http://www.creativtrans.com)

#### Avalanche problems



#### Danger ratings



#### Expositions

