

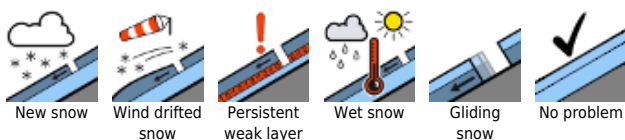
Favorable conditions in the morning. Slight daytime cycle of wet-snow avalanche danger.



Lechquellengebirge, Lechtaler Alpen, Verwall, Silvretta, Rätikon Ost, Rätikon West, Bregenzerwaldgebirge, Allgäuer Alpen



Avalanche problems

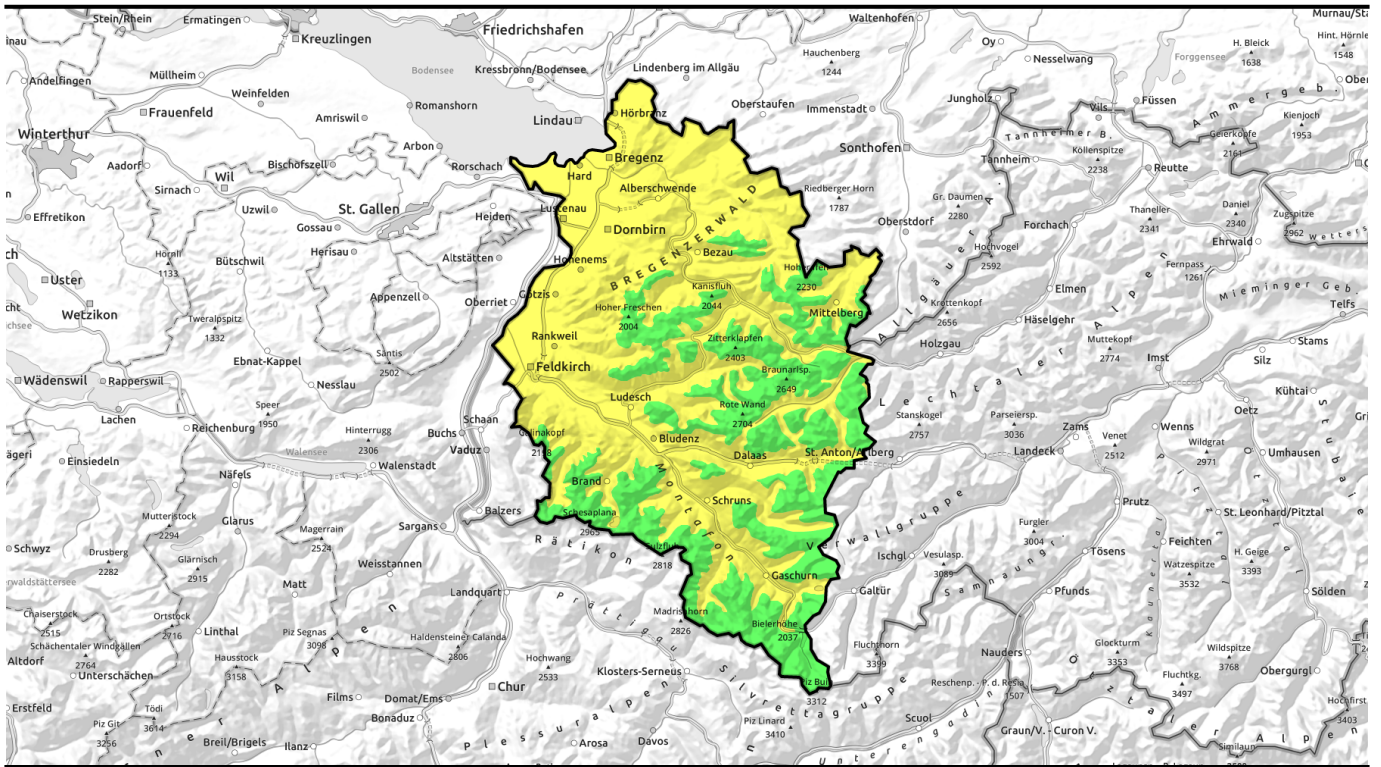


Danger ratings



Expositions





Am Vormittag günstige Bedingungen. Geringer Tagesgang der Nassschneelawinengefahr.

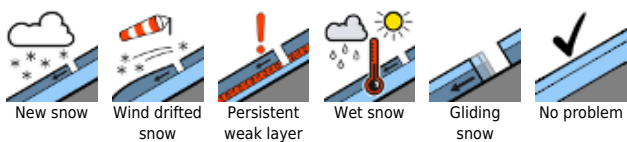


Lechquellengebirge, Lechtaler Alpen, Verwall, Silvretta, Rätikon Ost, Rätikon West, Bregenzerwaldgebirge, Allgäuer Alpen

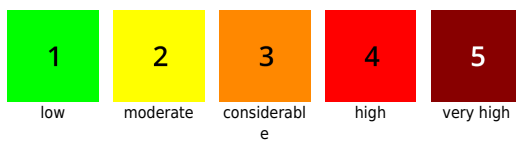


2400 m

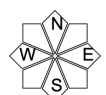
Avalanche problems



Danger ratings



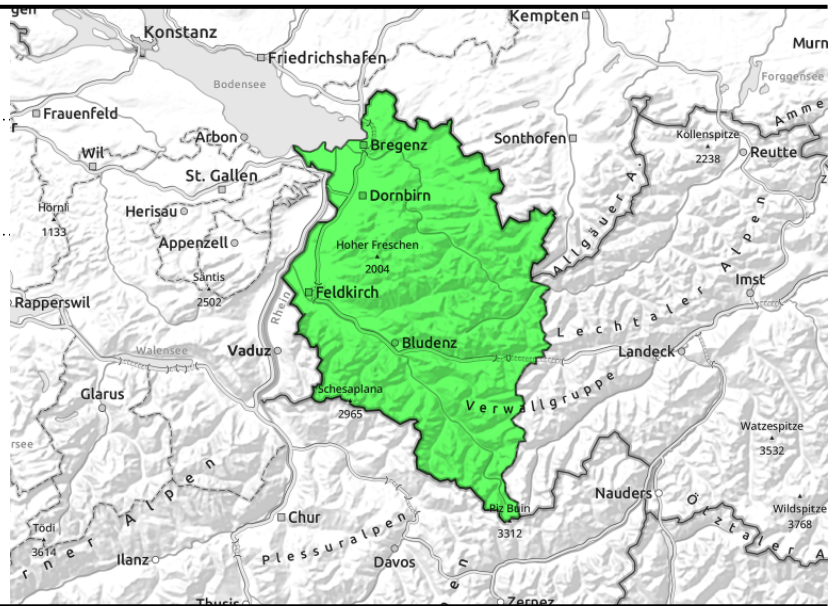
Expositions



Lechquellengebirge, Lechtaler Alpen, Verwall, Silvretta, Rätikon Ost, Rätikon West, Bregenzerwaldgebirge, Allgäuer Alpen



due to solar radiation and daytime warming



Slight increase in wet-snow avalanche danger below 2400m during daytime

Predominantly favorable conditions and low danger prevail in the morning. Due to solar radiation and daytime warming, avalanche danger increases swiftly to moderate below 2400m. Naturally triggered or low-additional-loading triggered small-to-medium wet-snow avalanches occur especially on E/S/W facing slopes. Backcountry skiing tours and activities in outlying terrain should be brought to an end early in the day. In regions where snowfall has been heavy on very steep grass-covered slopes, glide-snow avalanches continue to be possible. Caution below glide cracks. Weak layers in the old snow can often be triggered in high alpine regions, particularly by large additional loading small-to-medium avalanches can be triggered. Danger zones especially on very steep shady slopes.

Snowpack structure

During the cold, clear night with good outgoing radiation a crust formed which is generally capable of bearing loads. The thoroughly moist snowpack stabilized superficially. This crust softens during the day due to solar radiation and daytime warming, forfeits its firmness, increasing the danger of wet-snow avalanches somewhat. At low and intermediate altitudes there is not much snow on the ground. In high alpine regions, particularly on very steep shady slopes, there are still isolated danger zones for dry-snow avalanches; small-to-medium slabs can trigger in the near-surface layers or at the Sahara dust layer.

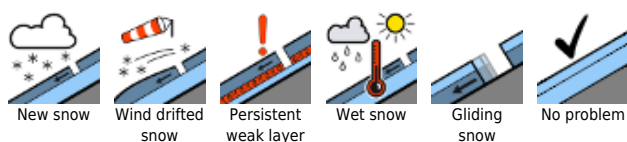
Weather

A sunny Easter Sunday, cool, often brisk NE air currents, below-zero temperatures at 2000 m. This afternoon, a few harmless cloudbanks, possibly hampering the sunshine somewhat. At 2000 m: -7 to 0 degrees. Moderate to brisk NE winds in the morning, slackening off this afternoon.

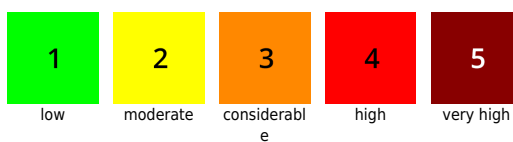
Outlook

On Monday and Tuesday, favorable avalanche situation in the morning. As a result of solar radiation and daytime warming the danger of wet-snow avalanches will increase slightly each day.

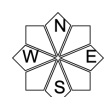
Avalanche problems



Danger ratings



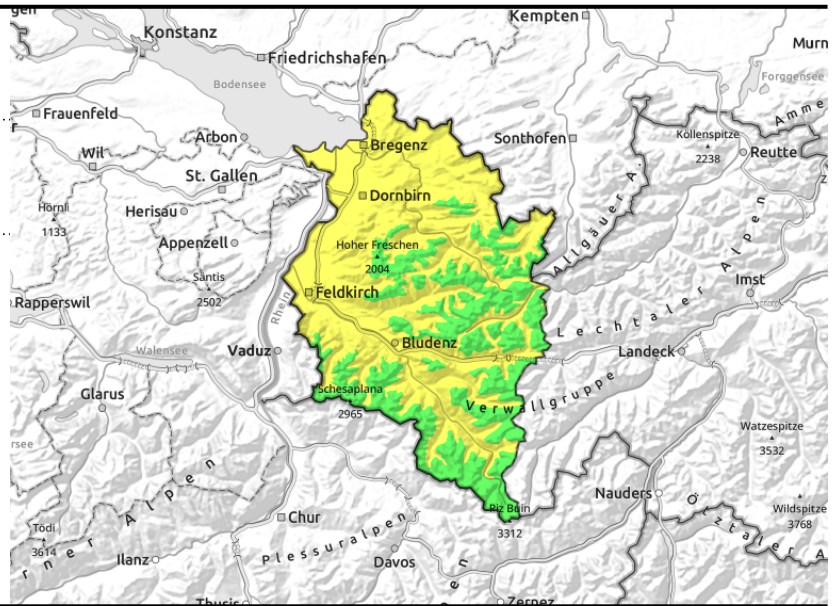
Expositions



Lechquellengebirge, Lechtaler Alpen, Verwall, Silvretta, Rätikon Ost, Rätikon West, Bregenzerwaldgebirge, Allgäuer Alpen



due to solar radiation and daytime warming



Slight increase in wet-snow avalanche danger below 2400m during daytime

Predominantly favorable conditions and low danger prevail in the morning. Due to solar radiation and daytime warming, avalanche danger increases swiftly to moderate below 2400m. Naturally triggered or low-additional-loading triggered small-to-medium wet-snow avalanches occur especially on E/S/W facing slopes. Backcountry skiing tours and activities in outlying terrain should be brought to an end early in the day. In regions where snowfall has been heavy on very steep grass-covered slopes, glide-snow avalanches continue to be possible. Caution below glide cracks. Weak layers in the old snow can often be triggered in high alpine regions, particularly by large additional loading small-to-medium avalanches can be triggered. Danger zones especially on very steep shady slopes.

Snowpack structure

During the cold, clear night with good outgoing radiation a crust formed which is generally capable of bearing loads. The thoroughly moist snowpack stabilized superficially. This crust softens during the day due to solar radiation and daytime warming, forfeits its firmness, increasing the danger of wet-snow avalanches somewhat. At low and intermediate altitudes there is not much snow on the ground. In high alpine regions, particularly on very steep shady slopes, there are still isolated danger zones for dry-snow avalanches; small-to-medium slabs can trigger in the near-surface layers or at the Sahara dust layer.

Weather

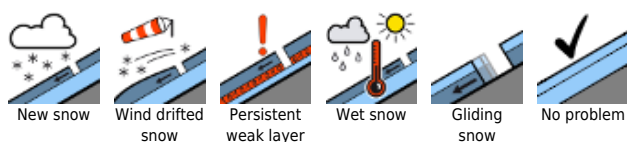
A sunny Easter Sunday, cool, often brisk NE air currents, below-zero temperatures at 2000 m. This afternoon, a few harmless cloudbanks, possibly hampering the sunshine somewhat. At 2000 m: -7 to 0 degrees. Moderate to brisk NE winds in the morning, slackening off this afternoon.

Outlook

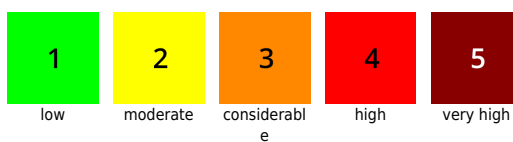
On Monday and Tuesday, favorable avalanche situation in the morning. As a result of solar radiation and daytime warming the danger of wet-snow avalanches will increase slightly each day.

Translated by Jeffrey McCabe, www.creativtrans.com

Avalanche problems



Danger ratings



Expositions

