

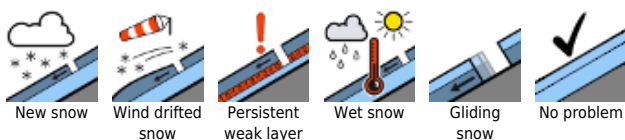
Low and intermediate avalanche danger - Some weak layers in old snow at high altitude - Wet avalanches during daytime



Allgäuer Alpen, Bregenzerwaldgebirge, Lechtallengebirge, Lechtaler Alpen, Verwall, Silvretta, Rätikon Ost, Rätikon West



Avalanche problems

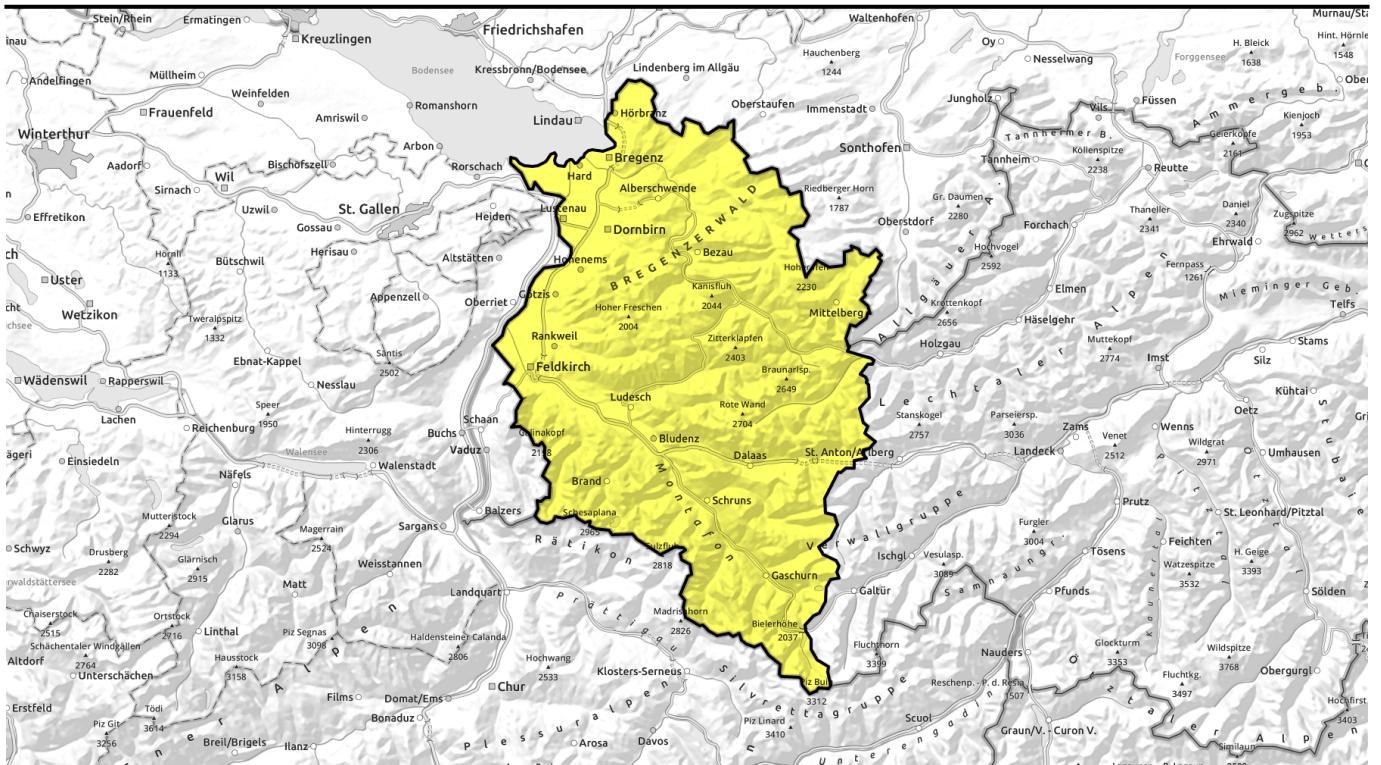


Danger ratings



Expositions





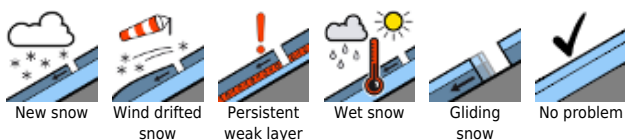
geringe und mäßige Lawinengefahr - in Hochlagen teilweise Schwachschichten im Altschnee und im Tagesverlauf nasse Lawinen



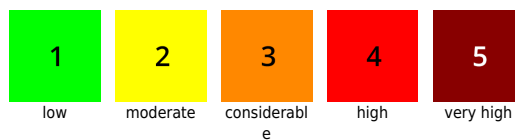
Allgäuer Alpen, Bregenzerwaldgebirge, Lechquellengebirge, Lechtaler Alpen, Verwall, Silvretta, Rätikon Ost, Rätikon West



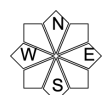
Avalanche problems



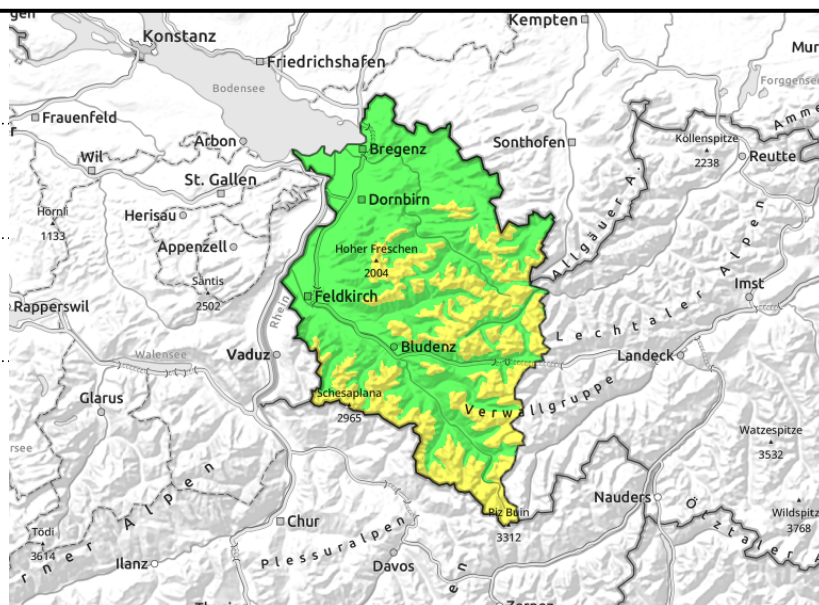
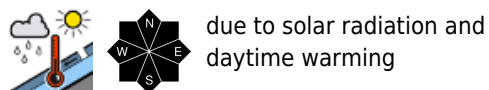
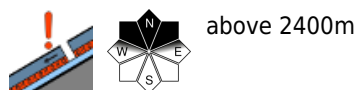
Danger ratings



Expositions



Allgäuer Alpen, Bregenzerwaldgebirge, Lechquellengebirge, Lechtaler Alpen, Verwall, Silvretta, Rätikon Ost, Rätikon West



Increasing daytime danger & wet snow problem

Danger is frequently low, rising to moderate at high altitude and as the day progresses. Weak layers in the old snow at high altitude can often be triggered, small-to-medium avalanches can be triggered by one sole skier. Danger zones occur especially on very steep shady slopes and in steep terrain at low altitudes. Naturally or minimal-artificially triggered moist slides and wet avalanches are possible esp. on E/S/W facing slopes up to high altitudes as the day progresses. In regions where recent snowfall has been heavy on steep grassy slopes, glide-snow avalanches are still possible.

Snowpack structure

Bonding of the most recent snowdrift accumulations to the old snowpack is generally good, but deteriorates with increasing altitude. Small-to-medium slab avalanches can trigger from the upper part of the snowpack or the layers of Sahara dust. During the largely mild night a crust formed which is capable of bearing loads. This softens rapidly due to solar radiation and higher temperatures, thus losing its firmness. The slopes are becoming bare at low and intermediate altitudes.

Weather

High-altitude clouds, some dust from the Sahara are perturbing the skies. This afternoon, also convective cloud build-up. It will remain mild, the zero-degree level at 3200m. At 2000m: 5-9 degrees. Light to moderate high-altitude winds from varying directions.

Outlook

Nocturnal skies will be partially overcast and mild. Thursday will start out sunny. In afternoon showers are possible. The danger of wet avalanches will increase already during the morning.

Avalanche problems



Danger ratings



Expositions



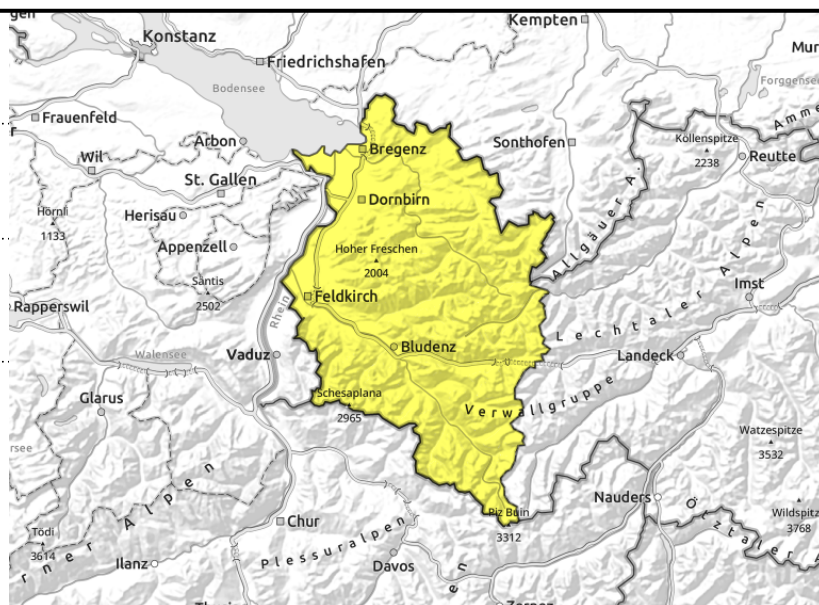
Allgäuer Alpen, Bregenzerwaldgebirge, Lechquellengebirge, Lechtaler Alpen, Verwall, Silvretta, Rätikon Ost, Rätikon West



above 2400m



due to solar radiation and daytime warming



Increasing daytime danger & wet snow problem

Danger is frequently low, rising to moderate at high altitude and as the day progresses. Weak layers in the old snow at high altitude can often be triggered, small-to-medium avalanches can be triggered by one sole skier. Danger zones occur especially on very steep shady slopes and in steep terrain at low altitudes. Naturally or minimal-artificially triggered moist slides and wet avalanches are possible esp. on E/S/W facing slopes up to high altitudes as the day progresses. In regions where recent snowfall has been heavy on steep grassy slopes, glide-snow avalanches are still possible.

Snowpack structure

Bonding of the most recent snowdrift accumulations to the old snowpack is generally good, but deteriorates with increasing altitude. Small-to-medium slab avalanches can trigger from the upper part of the snowpack or the layers of Sahara dust. During the largely mild night a crust formed which is capable of bearing loads. This softens rapidly due to solar radiation and higher temperatures, thus losing its firmness. The slopes are becoming bare at low and intermediate altitudes.

Weather

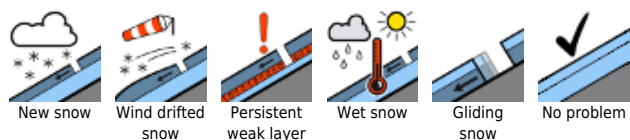
High-altitude clouds, some dust from the Sahara are perturbing the skies. This afternoon, also convective cloud build-up. It will remain mild, the zero-degree level at 3200m. At 2000m: 5-9 degrees. Light to moderate high-altitude winds from varying directions.

Outlook

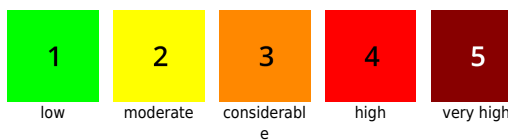
Nocturnal skies will be partially overcast and mild. Thursday will start out sunny. In afternoon showers are possible. The danger of wet avalanches will increase already during the morning.

Translated by Jeffrey McCabe, www.creativtrans.com

Avalanche problems



Danger ratings



Expositions

