

Low and moderate avalanche danger - Small drifts at high altitude - Daytime wet-snow avalanches

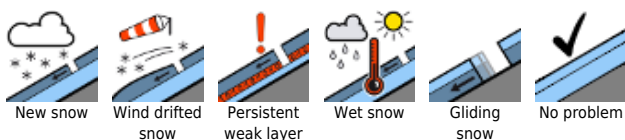


2400 m

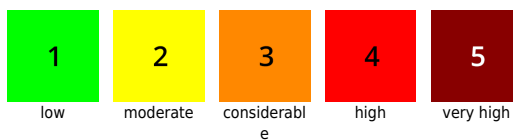
Allgäuer Alpen, Bregenzerwaldgebirge, Lechquellengebirge, Lechtaler Alpen, Verwall, Silvretta, Rätikon Ost, Rätikon West



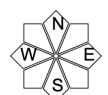
Avalanche problems

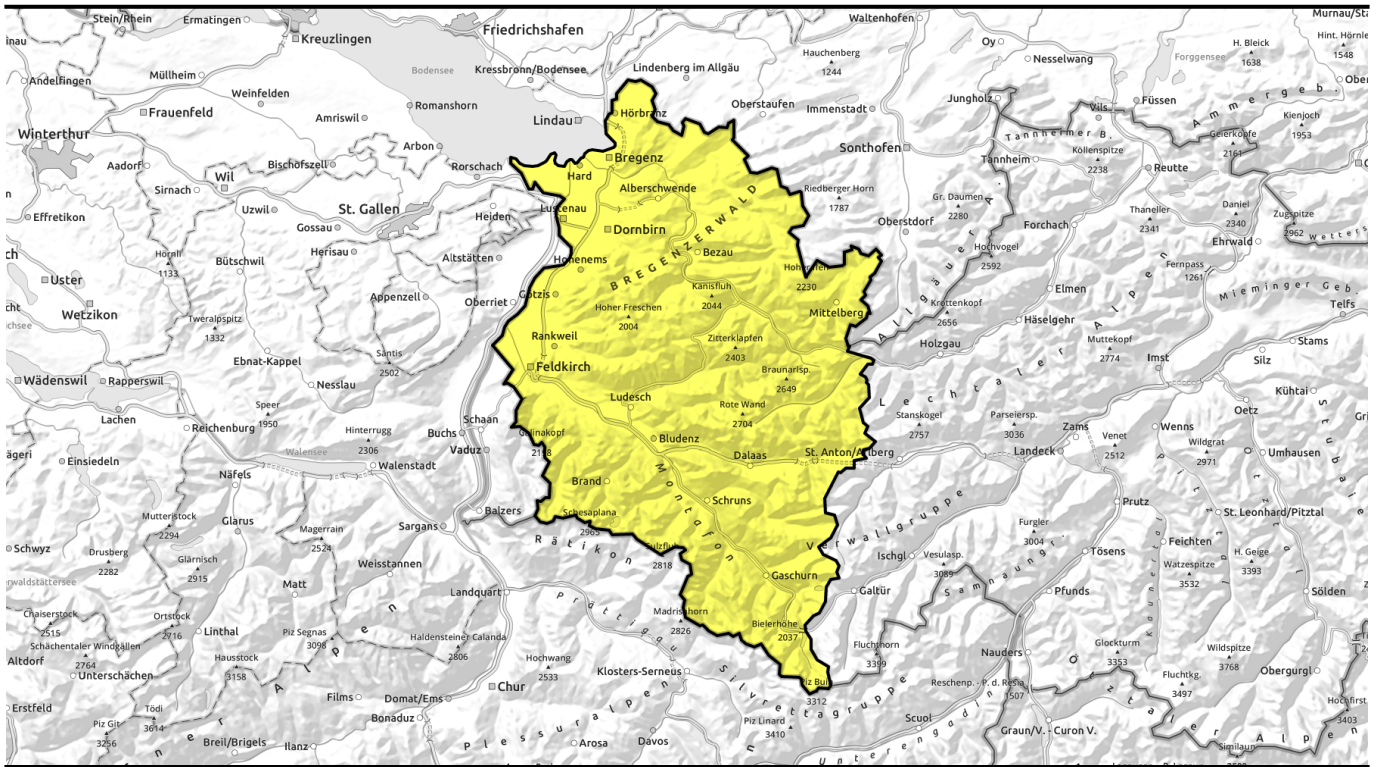


Danger ratings



Expositions





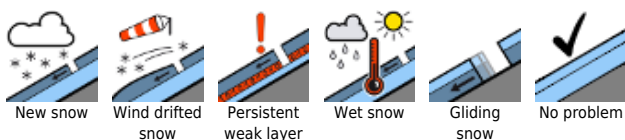
geringe und mäßige Lawinengefahr - in Hochlagen kleinräumig Triebschnee und im Tagesverlauf nasse Lawinen



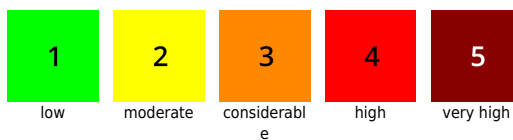
Allgäuer Alpen, Bregenzerwaldgebirge, Lechquellengebirge, Lechtaler Alpen, Verwall, Silvretta, Rätikon Ost, Rätikon West



Avalanche problems



Danger ratings



Expositions



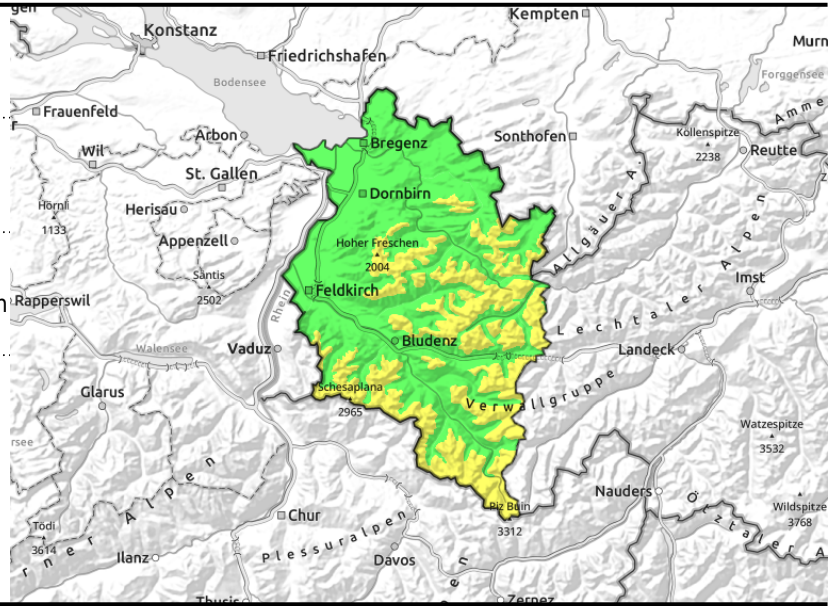
12.04.2022, morning

Allgäuer Alpen, Bregenzerwaldgebirge, Lechquellengebirge, Lechtaler Alpen, Verwall, Silvretta, Rätikon Ost, Rätikon West



ridgelines, bowls, wind-impacted steep slopes >2400m

with solar radiation and daytime warming



Take heed: fresh high-altitude snowdrifts - increasingly frequent daytime wet slides and avalanches

Avalanche danger is frequently low, then moderate with daytime warming. Older snowdrifts are prone to triggering with ascending altitude. Small-to-medium avalanches can be triggered by one single skier. Danger zones are found particularly in ridge zones and on shady steep slopes. Size and frequency increase with ascending altitude. In high alpine regions the increase is greater. Due to solar radiation and daytime warming, naturally or one skier-triggered small to medium moist slides and wet-snow avalanches are possible on steep sunny slopes, also on steep shady slopes at intermediate altitudes. Small glide-snow avalanches continue to be possible on very steep grassy slopes. Caution urged below glide cracks.

Snowpack structure

At high altitudes the recently generated snowdrift accumulations were able to settle further and consolidate. Bonding to the old snowpack is generally adequate, but deteriorates with ascending altitude and, in particular, on steep shady slopes. Small-to-medium slab avalanches can trigger there inside the layers of fresh snow and drifts or near the layers of Sahara dust. During a night of largely clear skies, a superficial melt-freeze crust formed which is generally capable of bearing loads. It subsequently softens during the daytime due to solar radiation and warmer temperatures, thereby forfeiting its firmness.

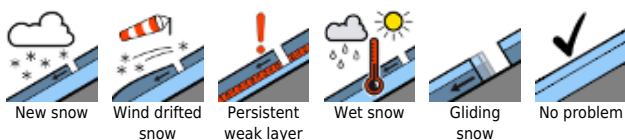
Weather

High-altitude clouds will hamper the sunshine this afternoon in particular. It will be milder than yesterday. At 2000m: rising from 4 to 11 degrees. Light to moderate W/SW winds at high altitude.

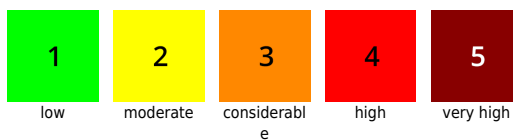
Outlook

Nighttime skies will be cloudy and mild. On Wednesday, Sahara dust will affect light conditions. Temperatures will rise further. Danger of wet snow avalanches is heightened even in the morning.

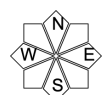
Avalanche problems



Danger ratings



Expositions



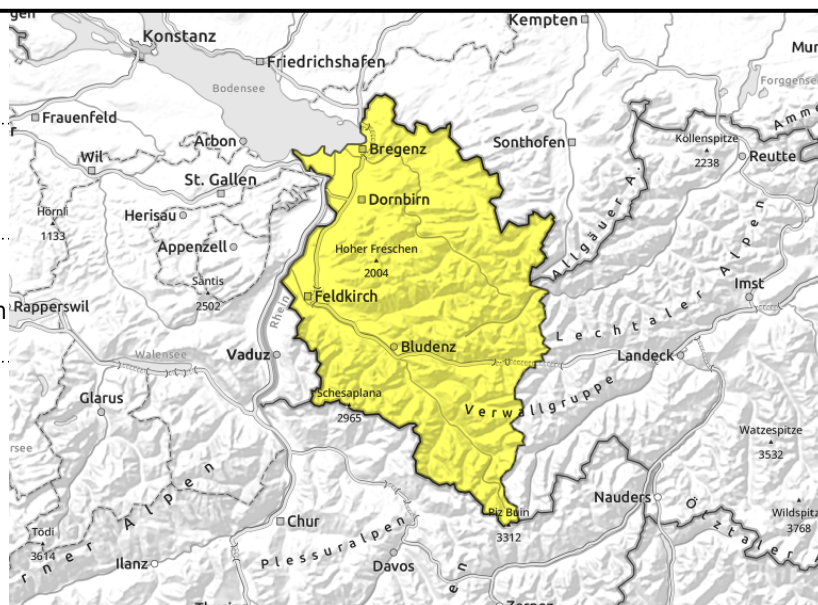
Allgäuer Alpen, Bregenzerwaldgebirge, Lechquellengebirge, Lechtaler Alpen, Verwall, Silvretta, Rätikon Ost, Rätikon West



ridgelines, bowls, wind-impacted steep slopes >2400m



with solar radiation and daytime warming



Take heed: fresh high-altitude snowdrifts - increasingly frequent daytime wet slides and avalanches

Avalanche danger is frequently low, then moderate with daytime warming. Older snowdrifts are prone to triggering with ascending altitude. Small-to-medium avalanches can be triggered by one single skier. Danger zones are found particularly in ridge zones and on shady steep slopes. Size and frequency increase with ascending altitude. In high alpine regions the increase is greater. Due to solar radiation and daytime warming, naturally or one skier-triggered small to medium moist slides and wet-snow avalanches are possible on steep sunny slopes, also on steep shady slopes at intermediate altitudes. Small glide-snow avalanches continue to be possible on very steep grassy slopes. Caution urged below glide cracks.

Snowpack structure

At high altitudes the recently generated snowdrift accumulations were able to settle further and consolidate. Bonding to the old snowpack is generally adequate, but deteriorates with ascending altitude and, in particular, on steep shady slopes. Small-to-medium slab avalanches can trigger there inside the layers of fresh snow and drifts or near the layers of Sahara dust. During a night of largely clear skies, a superficial melt-freeze crust formed which is generally capable of bearing loads. It subsequently softens during the daytime due to solar radiation and warmer temperatures, thereby forfeiting its firmness.

Weather

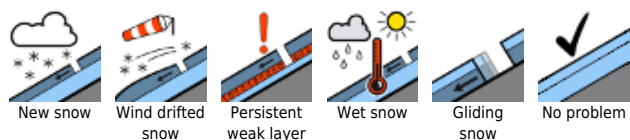
High-altitude clouds will hamper the sunshine this afternoon in particular. It will be milder than yesterday. At 2000m: rising from 4 to 11 degrees. Light to moderate W/SW winds at high altitude.

Outlook

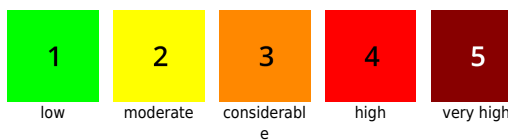
Nighttime skies will be cloudy and mild. On Wednesday, Sahara dust will affect light conditions. Temperatures will rise further. Danger of wet snow avalanches is heightened even in the morning.

Translated by Jeffrey McCabe, www.creativtrans.com

Avalanche problems



Danger ratings



Expositions

