

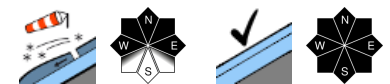
Considerable avalanche danger regionally due to fresh snow and wind. Fresh snowdrifts at high altitude.



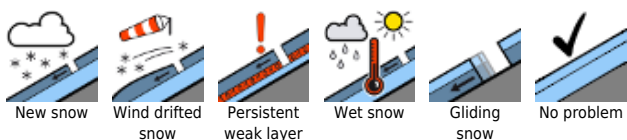
Bregenzerwaldgebirge, Lechquellengebirge, Allgäuer Alpen, Lechtaler Alpen, Verwall



Rätikon West, Rätikon Ost, Silvretta



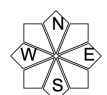
Avalanche problems



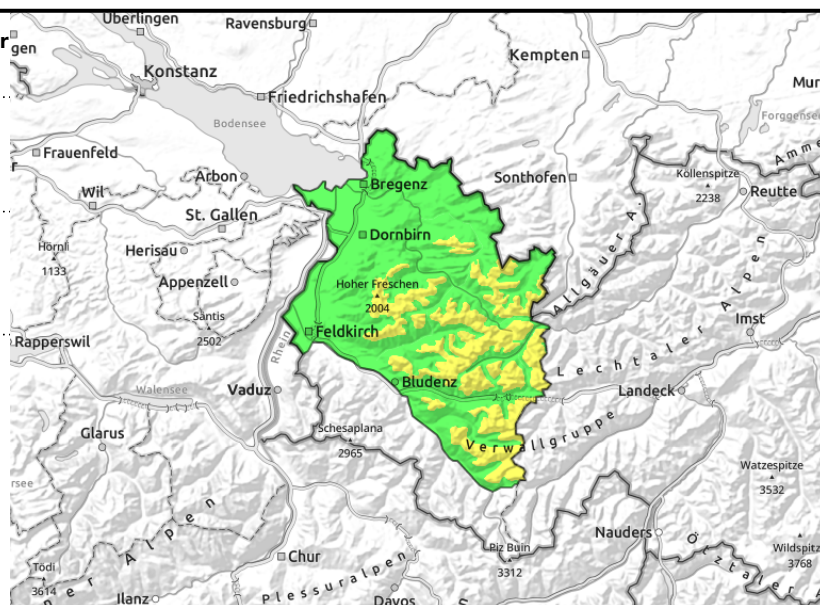
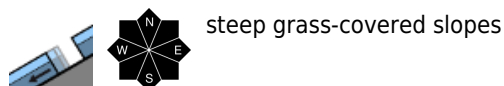
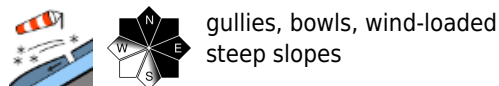
Danger ratings



Expositions



Bregenzerwaldgebirge, Lechquellengebirge, Allgäuer Alpen, Lechtaler Alpen, Verwall



Main danger: fresh snowdrifts with ascending altitude

Avalanche danger is often low, above the treeline moderate. Fresh snowdrifts are prone to triggering high-altitudes. Small-to-medium avalanches can be triggered by one single skier. Danger zones are found particularly in wind-loaded ridge zones and in high alpine regions. Size and frequency increase with ascending altitude. In steep rocky terrain, small-to-medium loose-snow avalanches are possible. As temperatures drop, the danger of wet-snow avalanches will recede significantly during the day. Glide-snow avalanches are also possible on steep grassy slopes. Caution urged below glide cracks.

Snowpack structure

At high altitude there was 10-15 cm of fresh snow registered, more from place to place. Strong, often stormy winds led to transport of the snow and fresh snowdrifts accumulating. Bonding to the old snowpack is generally good, but deteriorates with ascending altitude and in ridgeline terrain. Small-to-medium avalanches can trigger inside the fresh snow and drifts, or in the layer of dust from the Sahara. Due to lower temperatures the snowpack has consolidated and stabilized up to intermediate altitudes.

Weather

Heavily overcast until afternoon, intermittent snow showers, decreasing during the afternoon. Chances of bright intervals and windows of sunshine will increase. Clouds will further disperse as evening approaches. At 2000 m: -9 to -5 degrees. Mostly moderate NW winds at high altitude.

Outlook

Monday will be very sunny despite high altitude clouds, and temperatures will rise significantly. The danger of dry-snow avalanches will gradually recede. Wet-snow and glide-snow avalanches will be increasingly possible.

Avalanche problems



Danger ratings



Expositions

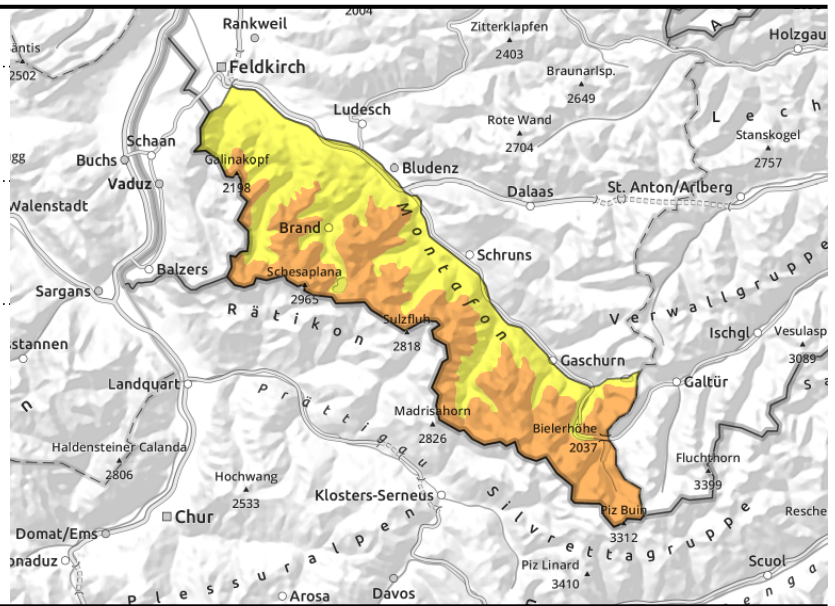


Rätikon West, Rätikon Ost, Silvretta



gullies, bowls, wind-loaded steep slopes

steep grass-covered slopes



Main danger: fresh snowdrifts with ascending altitude

Avalanche danger is often moderate, at high altitude considerable. Fresh snowdrifts are prone to triggering high-altitudes. Small-to-medium avalanches can be triggered by one single skier. Danger zones are found particularly in wind-loaded ridge zones and in high alpine regions. Size and frequency increase with ascending altitude. In steep rocky terrain, small-to-medium loose-snow avalanches are possible. As temperatures drop, the danger of wet-snow avalanches will recede significantly during the day. Glide-snow avalanches are also possible on steep grassy slopes. Caution urged below glide cracks.

Snowpack structure

At high altitude there was 10-15 cm of fresh snow registered, more from place to place. Strong, often stormy winds led to transport of the snow and fresh snowdrifts accumulating. Bonding to the old snowpack is generally good, but deteriorates with ascending altitude and in ridgeline terrain. Small-to-medium avalanches can trigger inside the fresh snow and drifts, or in the layer of dust from the Sahara. Due to lower temperatures the snowpack has consolidated and stabilized up to intermediate altitudes.

Weather

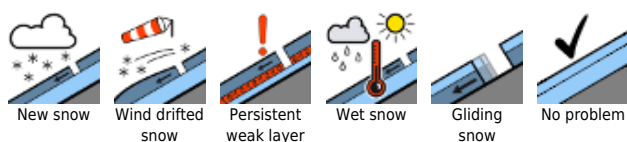
Heavily overcast until afternoon, intermittent snow showers, decreasing during the afternoon. Chances of bright intervals and windows of sunshine will increase. Clouds will further disperse as evening approaches. At 2000 m: -9 to -5 degrees. Mostly moderate NW winds at high altitude.

Outlook

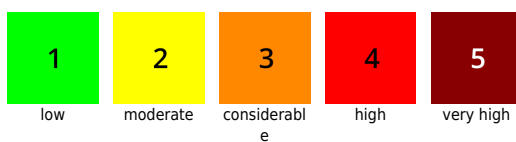
Monday will be very sunny despite high altitude clouds, and temperatures will rise significantly. The danger of dry-snow avalanches will gradually recede. Wet-snow and glide-snow avalanches will be increasingly possible

Translated by Jeffrey McCabe, www.creativtrans.com

Avalanche problems



Danger ratings



Expositions

