

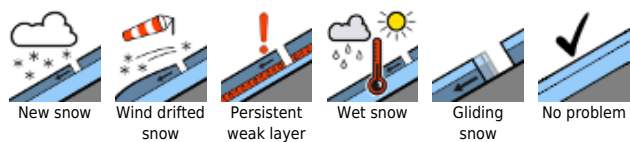
Predominantly moderate avalanche danger / Wet daytime avalanches due to warmth



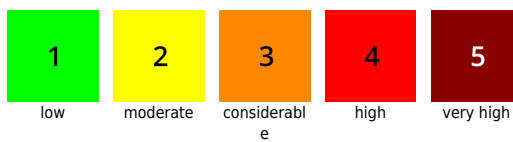
Bregenzerwaldgebirge, Lechquellengebirge, Allgäuer Alpen, Lechtaler Alpen, Verwall, Rätikon West, Rätikon Ost, Silvretta



Avalanche problems



Danger ratings



Expositions

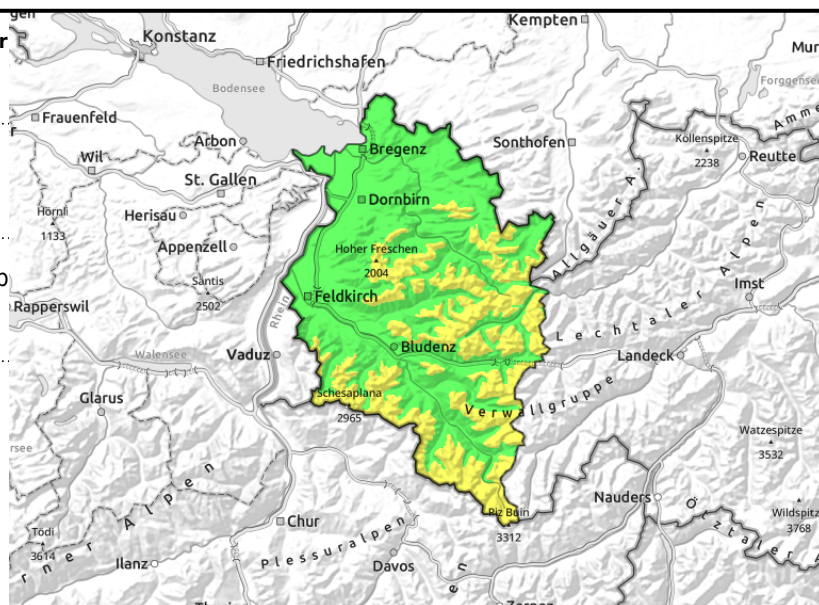


Bregenzerwaldgebirge, Lechquellengebirge, Allgäuer Alpen, Lechtaler Alpen, Verwall, Rätikon West, Rätikon Ost, Silvretta



ridgelines, wind-impacted steep slopes >2200m

wet-snow avalanches due to warmth and rainfall



Fresh snow/snowdrifts still prone to triggering at high altitudes / Wet-snow avalanches due to warmth

Avalanche danger is moderate. Fresh snow/snowdrifts from the weekend are prone to triggering in some high-altitude places. Small-to-medium avalanches can be triggered by one single skier. Danger zones are found particularly in ridge zones in all aspects, on very steep high-altitude slopes and in high alpine regions. Due to warmth, the snowpack at lower altitudes will forfeit its firmness. In the course of the day in all aspects, moist loose-snow and wet-snow avalanches can be expected. Isolated glide-snow avalanches are also possible on steep grassy slopes. Caution is urged below glide cracks. At low altitudes there is hardly any snow on the ground.

Snowpack structure

By early morning today, there was up to 10 cm of fresh snow registered at high altitudes. Intermittent moderate-strength winds led to snow transport. Bonding to the old snowpack is generally good, but deteriorates with ascending altitude and in ridgeline terrain. Small-to-medium avalanches can trigger inside the fresh snow and drifts, or in the layer of dust from the Sahara. Due to rain seepage the snowpack has become moist up to intermediate altitude. Below 1000-1200 the slopes are mostly bare of snow.

Weather

In the morning skies will initially be overcast in the lowlands and northern regions, elsewhere there will be sunshine. The latter part of the day will bring convective cloud build-up which will, in turn, bring isolated rain showers to the mountains. The snowfall level will be just under 2000 m. At 2000 m: +2 degrees. Moderate to brisk W/SW winds.

Outlook

Rainfall is expected during the night. Thursday will be windy and mild. Avalanche danger is not expected to change significantly. Be careful of fresh snowdrifts at high altitudes.

Translated by Jeffrey McCabe, www.creativtrans.com

Avalanche problems



Danger ratings



Expositions

