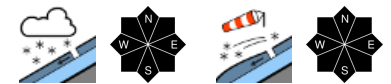


Considerable avalanche danger widespread, due to fresh snow and wind impact



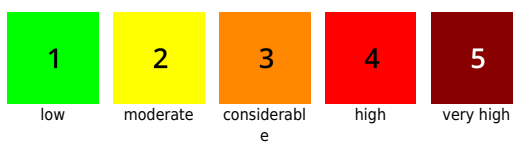
Allgäuer Alpen, Bregenzerwaldgebirge, Lechquellengebirge, Lechtaler Alpen, Verwall, Silvretta, Rätikon Ost, Rätikon West



Avalanche problems



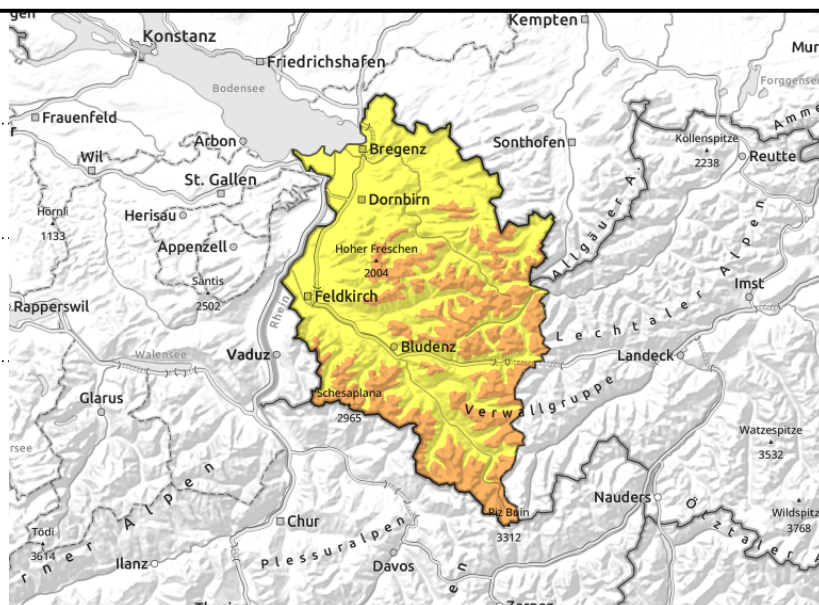
Danger ratings



Expositions



Allgäuer Alpen, Bregenzerwaldgebirge, Lechquellengebirge, Lechtaler Alpen, Verwall, Silvretta, Rätikon Ost, Rätikon West



Fresh snow and snowdrifts prone to triggering with ascending altitude

Above 1800 m avalanche danger is considerable, below that altitude danger is moderate. As a result of fresh snow and moderate-to-strong velocity wind, fresh snowdrift accumulations have been generated in exposed terrain. Fresh snow and drifts are increasingly prone to triggering with ascending altitude, avalanches can be triggered even by one sole skier and grow to medium size. Frequency and size of avalanche prone locations increase with ascending altitude, particularly in ridge zones in all aspects, on very steep high-altitude slopes and in high alpine regions. Activities in outlying terrain require experience in assessing avalanche risks on-site. Isolated glide-snow avalanches are also possible. Caution is urged below glide cracks.

Snowpack structure

Light to moderate snowfall yesterday and during the night (10-20 cm). As a result of moderate to strong wind impact, fresh snowdrift accumulations formed. Since Thursday there has been 35-45 cm of fresh snow registered widespread, in the Bregenzerwald mountains and Silvretta significantly more. It was deposited atop a raw old snowpack surface, is generally well bonded with it. In high alpine regions, bonding is poorer, avalanches can generally trigger only inside the layers of fresh snow and drifts from this period, in high alpine regions also at the borderline to the old snowpack. The old snowpack at intermediate altitudes is thoroughly wet, and it is wet up to high altitudes on sunny slopes, furthering the gliding movement of the snowpack on very steep and smooth slopes. At intermediate altitudes the sunny slopes are mostly bare of snow.

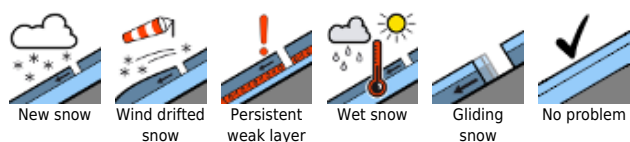
Weather

Quieter weather conditions are expected: a few snowflakes, but less cloud and fog. Sunshine is not yet in sight, with reduced visibility and cold. At 2000 m: -12 to -8 degrees. Light to moderate northerly winds.

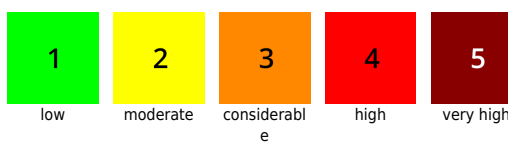
Outlook

On Monday, sunny. The day will begin cold, but temperatures will rise during the daytime hours. Moist loose-snow avalanches can be expected during the course of the day from the fresh fallen snow. The danger of dry-snow avalanches will diminish.

Avalanche problems



Danger ratings



Expositions



03.04.2022

Translated by Jeffrey McCabe, www.creativtrans.com

Avalanche problems



New snow



Wind drifted snow



Persistent weak layer



Wet snow



Gliding snow



No problem

Danger ratings



1

low



2

moderate



3

considerable



4

high



5

very high

Expositions

