

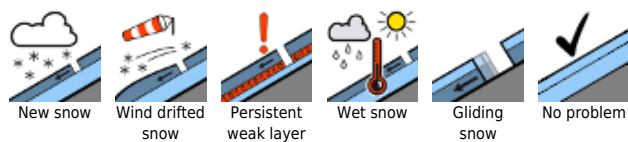
Increasing daytime danger of dry-snow avalanches due to fresh snow and wind



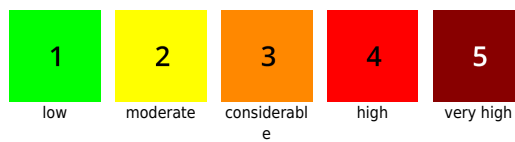
Allgäuer Alpen, Bregenzerwaldgebirge, Lechquellengebirge, Lechtaler Alpen, Verwall, Silvretta, Rätikon Ost, Rätikon West



Avalanche problems

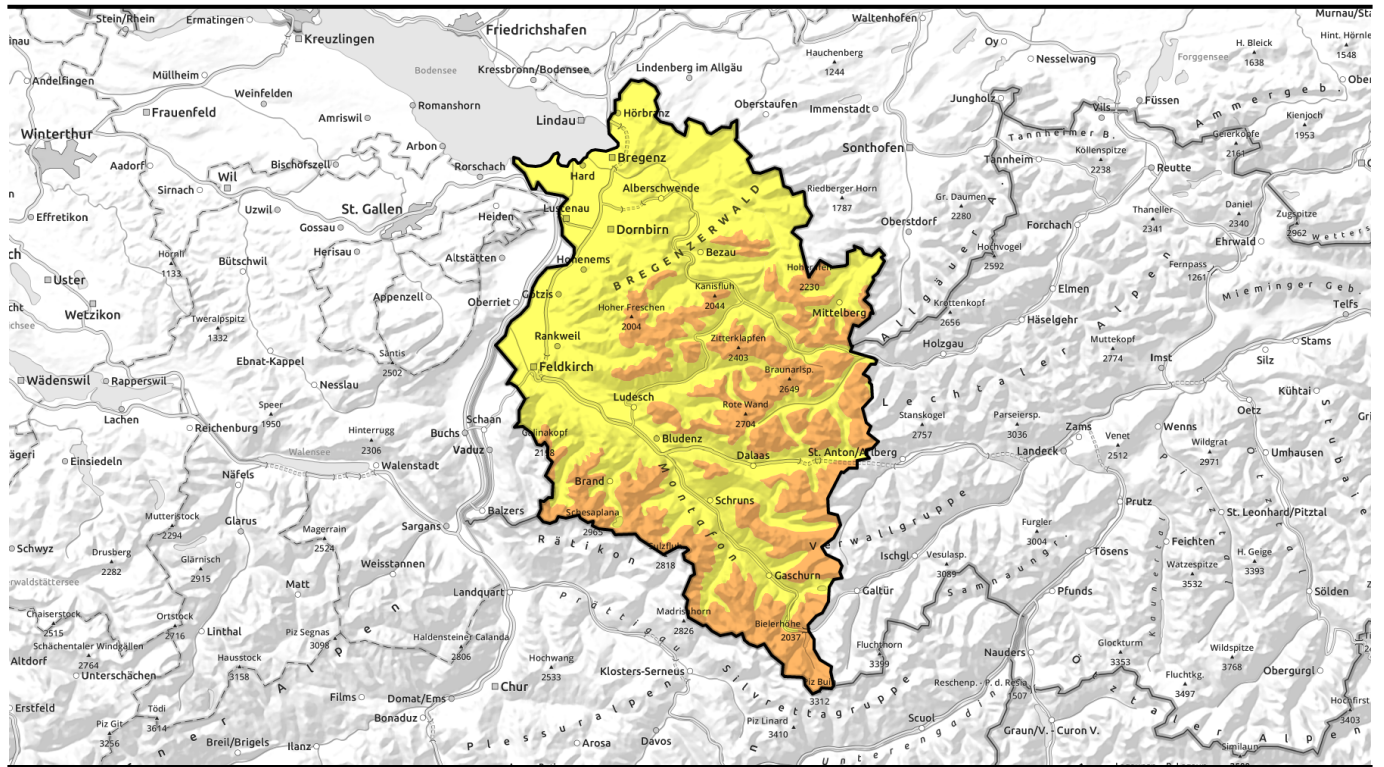


Danger ratings



Expositions





Mit Neuschnee und Wind Anstieg der Gefahr von trockenen Lawinen im Tagesverlauf.

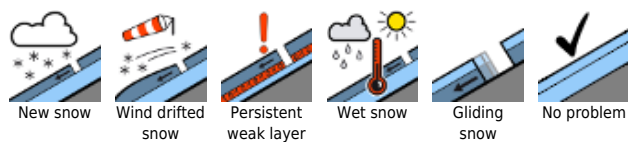


Allgäuer Alpen, Bregenzerwaldgebirge, Lechquellengebirge, Lechtaler Alpen, Verwall, Silvretta, Rätikon Ost, Rätikon West

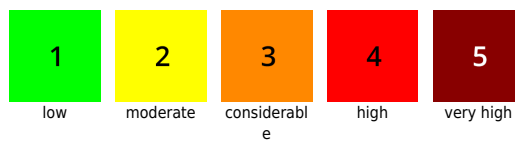


2000 m

Avalanche problems



Danger ratings



Expositions

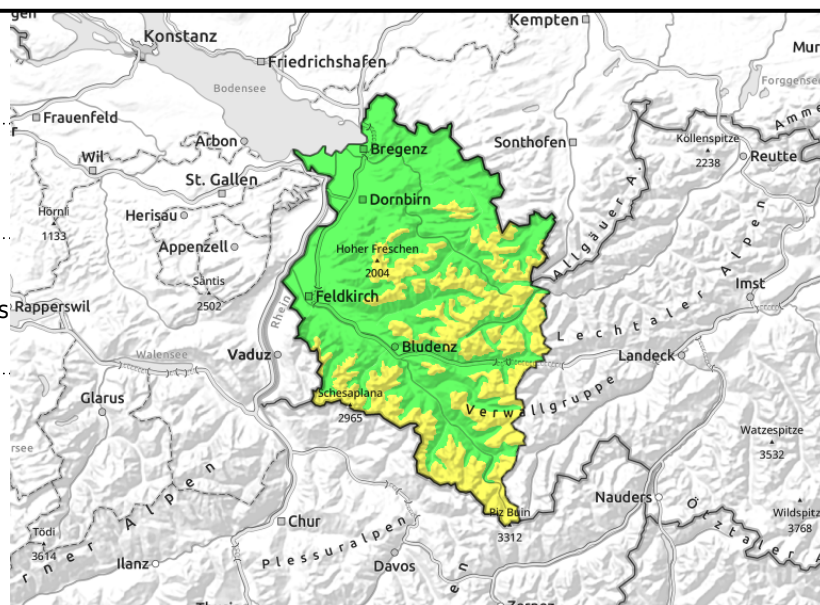


Allgäuer Alpen, Bregenzerwaldgebirge, Lechquellengebirge, Lechtaler Alpen, Verwall, Silvretta, Rätikon Ost, Rätikon West



>1800m, with wind impact, also trigger-sensitive snowdrifts forming

<2000m wherever sufficient snow, also moist slides



Caution: fresh snowdrifts at high altitudes

Above 1800 m danger is moderate, below that altitude low. Due to further snowfall and winds, avalanche danger will increase during the course of the day, reach Danger Level 3 (“considerable”), avalanches can be triggered by one single skier, attain medium size. Naturally triggered loose-snow avalanches possible in extremely steep terrain. Frequency, size of avalanche prone locations increase with ascending altitude, also as the day progresses. Backcountry activities require experience in assessing avalanche risks on-site. Due to fresh snow deposited atop a wet old snowpack, moist slides can release below 2000 m. Isolated glide-snow avalanches are also possible, particularly on north-facing slopes and wherever there is sufficient snow. Caution is urged below glide cracks.

Snowpack structure

Light to moderate snowfall throughout the day yesterday, intensifying during the nocturnal hours. Snowfall level descended from 1000 m to just below 500 m in early morning, 15-20 cm of fresh snow registered widespread, more from place to place, deposited atop a raw old snowpack surface, generally well bonded with it. As a result of moderate to strong NW winds, fresh, often trigger-sensitive snowdrifts were generated in exposed high-altitude terrain. As temperatures drop, danger of wet-snow and glide-snow avalanches will decrease. The old snowpack is thoroughly wet, up to high altitudes on sunny slopes, furthering gliding movement of the snowpack on very steep, smooth slopes. At intermediate altitudes the sunny slopes are mostly bare of snow.

Weather

Low-pressure weather front, northerly air current are bringing deep-winter conditions, cold. Clouds/fog assure poor visibility. Persistent snowfall in the morning, showers this afternoon. During the night tonight, more snow showers, though the amounts will be moderate. At 2000 m: -5 to -8 degrees. Light to moderate northerly winds at high altitude.

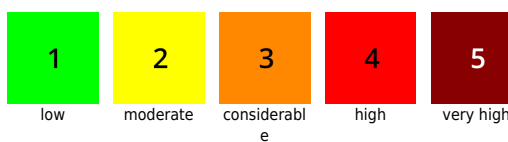
Outlook

Frequent, often heavy snowfall Saturday (Bregenzerwald to Arlberg, less so in Rätikon, Silvretta). Danger will increase in barrier cloud regions, elsewhere less so.

Avalanche problems



Danger ratings



Expositions

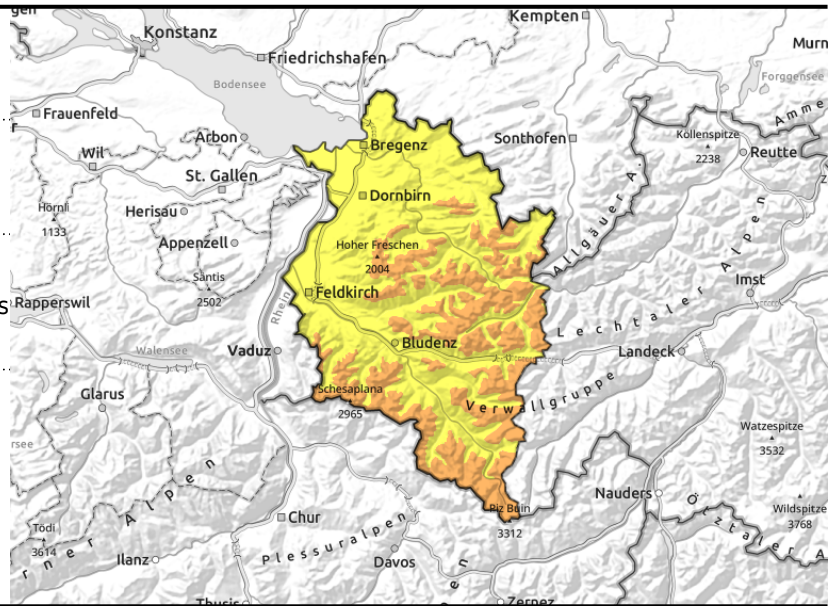


Allgäuer Alpen, Bregenzerwaldgebirge, Lechquellengebirge, Lechtaler Alpen, Verwall, Silvretta, Rätikon Ost, Rätikon West



>1800m, with wind impact, also trigger-sensitive snowdrifts forming

<2000m wherever sufficient snow, also moist slides



Caution: fresh snowdrifts at high altitudes

Above 1800 m danger is moderate, below that altitude low. Due to further snowfall and winds, avalanche danger will increase during the course of the day, reach Danger Level 3 (“considerable”), avalanches can be triggered by one single skier, attain medium size. Naturally triggered loose-snow avalanches possible in extremely steep terrain. Frequency, size of avalanche prone locations increase with ascending altitude, also as the day progresses. Backcountry activities require experience in assessing avalanche risks on-site. Due to fresh snow deposited atop a wet old snowpack, moist slides can release below 2000 m. Isolated glide-snow avalanches are also possible, particularly on north-facing slopes and wherever there is sufficient snow. Caution is urged below glide cracks.

Snowpack structure

Light to moderate snowfall throughout the day yesterday, intensifying during the nocturnal hours. Snowfall level descended from 1000 m to just below 500 m in early morning, 15-20 cm of fresh snow registered widespread, more from place to place, deposited atop a raw old snowpack surface, generally well bonded with it. As a result of moderate to strong NW winds, fresh, often trigger-sensitive snowdrifts were generated in exposed high-altitude terrain. As temperatures drop, danger of wet-snow and glide-snow avalanches will decrease. The old snowpack is thoroughly wet, up to high altitudes on sunny slopes, furthering gliding movement of the snowpack on very steep, smooth slopes. At intermediate altitudes the sunny slopes are mostly bare of snow.

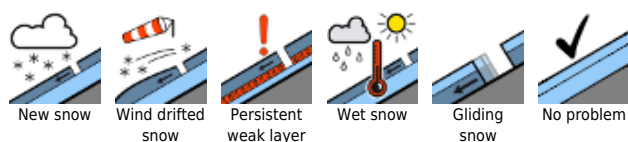
Weather

Low-pressure weather front, northerly air current are bringing deep-winter conditions, cold. Clouds/fog assure poor visibility. Persistent snowfall in the morning, showers this afternoon. During the night tonight, more snow showers, though the amounts will be moderate. At 2000 m: -5 to -8 degrees. Light to moderate northerly winds at high altitude.

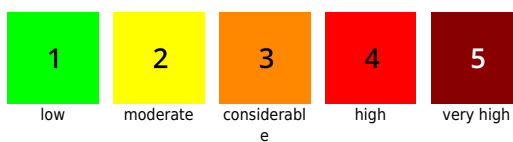
Outlook

Frequent, often heavy snowfall Saturday (Bregenzerwald to Arlberg, less so in Rätikon, Silvretta). Danger will increase in barrier cloud regions, elsewhere less so.

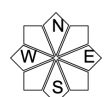
Avalanche problems



Danger ratings



Expositions



01.04.2022, afternoon

Translated by Jeffrey McCabe, www.creativtrans.com

Avalanche problems



New snow



Wind drifted snow



Persistent weak layer



Wet snow



Gliding snow



No problem

Danger ratings



1

low



2

moderate



3

considerable



4

high



5

very high

Expositions

