



Mostly favorable conditions, low avalanche danger later rising to moderate



Bregenzwaldgebirge, Allgäuer Alpen, Lechtaler Alpen, Verwall, Rätikon Ost, Silvretta, Rätikon West, Lechquellengebirge



Avalanche problems

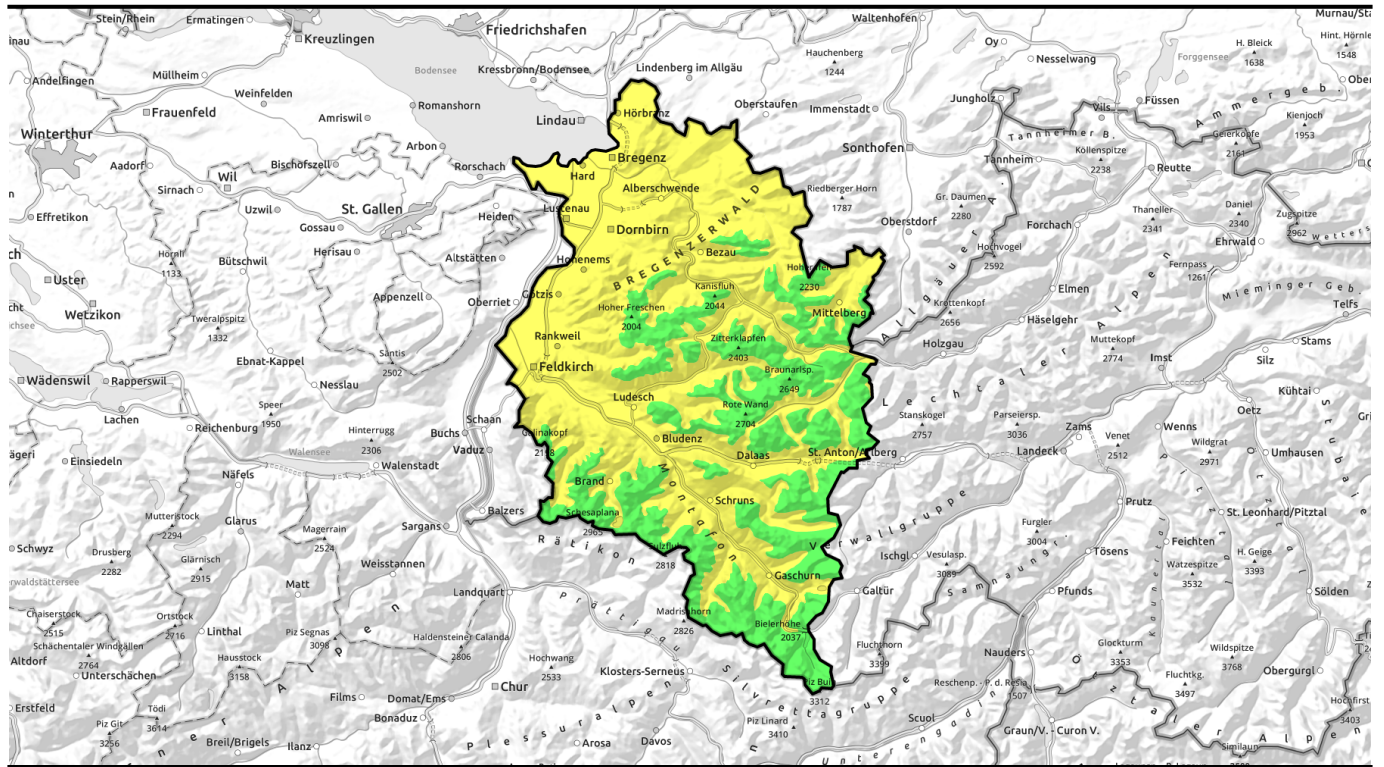


Danger ratings



Expositions

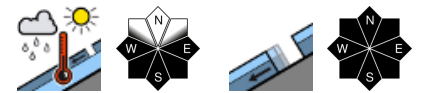




nochmals überwiegend günstige Verhältnisse mit geringer, im Tagesverlauf mäßiger Lawinengefahr

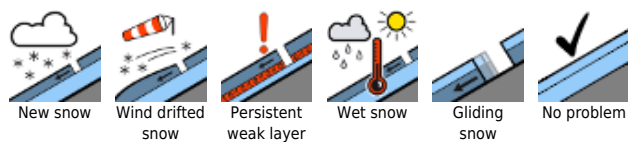


Bregenzerwaldgebirge, Allgäuer Alpen, Lechtaler Alpen, Verwall, Rätikon Ost, Silvretta, Rätikon West, Lechquellengebirge

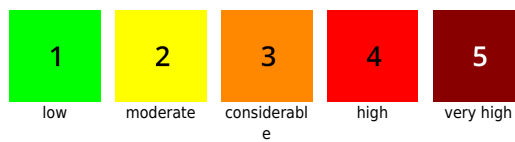


2600 m

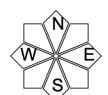
Avalanche problems



Danger ratings



Expositions



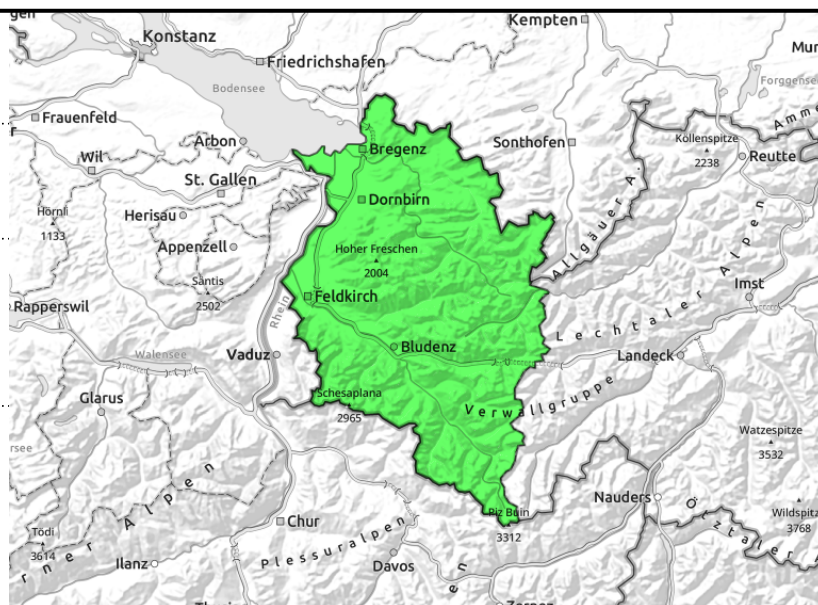
Bregenzerwaldgebirge, Allgäuer Alpen, Lechtaler Alpen, Verwall, Rätikon Ost, Silvretta, Rätikon West, Lechquellengebirge



wet-snow avalanches during the day esp. on sun-drenched slopes, due to solar radiation and warmth



possible at any time of day or night



Slightly increasing avalanche danger during the course of the day

In the morning “low” avalanche danger prevails for a time. Isolated danger zones for dry-snow avalanches occur still in extremely steep, mostly shady terrain in high alpine regions. Apart from the risks of being buried in snow, the dangers of being swept along and forced to take a fall also require attentiveness. Due to warmth and solar radiation, the danger of wet-snow and glide-snow avalanches rises to “moderate”. Naturally triggered small to medium-sized wet-snow and glide-snow avalanches are possible during the course of the day, especially on steep sunny slopes below 2600m. Glide-snow avalanches can grow to large size in isolated cases. Zones below glide cracks in the surface should be avoided. Backcountry tours should start early, end early.

Snowpack structure

Following a night of cloudless skies and adequate outgoing longwave radiation, the snowpack was able to form a melt-freeze crust capable of bearing loads. Below the crust, however, the snowpack is thoroughly wet and even the base is often wet up to high altitudes. On very steep smooth slopes this furthers the gliding movement of the entire snowpack. During the day the snowpack softens with varying rapidity depending on wind impact, gradient and aspect, further losing firmness.

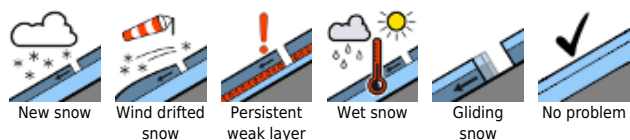
Weather

Sunny, cloudless skies will prevail to start with. In the afternoon, harmless convective clouds will gather above summit level. In addition, dust from the Sahara will again fill the atmosphere. At 2000 m: -1 to 5 degrees. Light SW winds at high altitude.

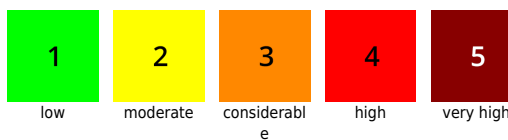
Outlook

Nocturnal skies will be heavily overcast tonight, and cloud cover will continue on Tuesday. Due to reduced outgoing longwave radiation, danger of wet-snow avalanches will increase already in the morning.

Avalanche problems



Danger ratings



Expositions



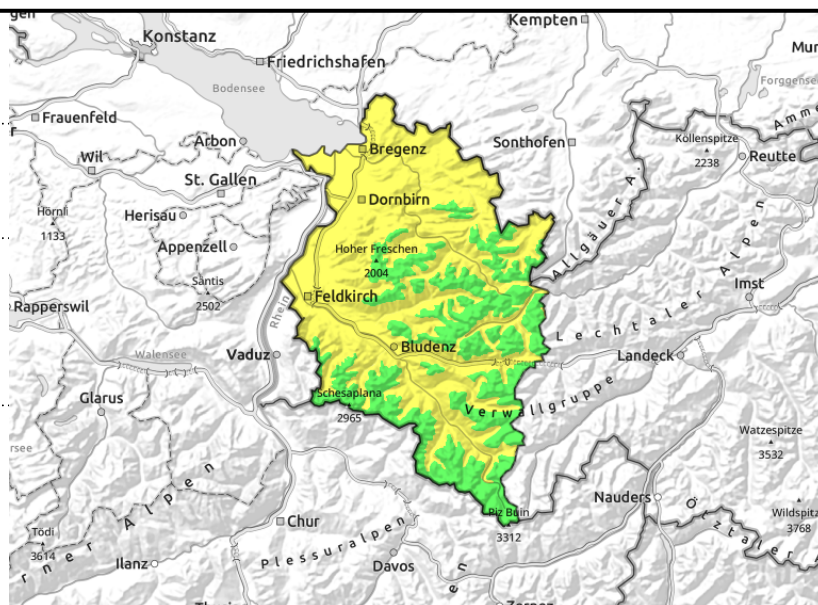
Bregenzerwaldgebirge, Allgäuer Alpen, Lechtaler Alpen, Verwall, Rätikon Ost, Silvretta, Rätikon West, Lechquellengebirge



wet-snow avalanches during the day esp. on sun-drenched slopes, due to solar radiation and warmth



possible at any time of day or night



Slightly increasing avalanche danger during the course of the day

In the morning “low” avalanche danger prevails for a time. Isolated danger zones for dry-snow avalanches occur still in extremely steep, mostly shady terrain in high alpine regions. Apart from the risks of being buried in snow, the dangers of being swept along and forced to take a fall also require attentiveness. Due to warmth and solar radiation, the danger of wet-snow and glide-snow avalanches rises to “moderate”. Naturally triggered small to medium-sized wet-snow and glide-snow avalanches are possible during the course of the day, especially on steep sunny slopes below 2600m. Glide-snow avalanches can grow to large size in isolated cases. Zones below glide cracks in the surface should be avoided. Backcountry tours should start early, end early.

Snowpack structure

Following a night of cloudless skies and adequate outgoing longwave radiation, the snowpack was able to form a melt-freeze crust capable of bearing loads. Below the crust, however, the snowpack is thoroughly wet and even the base is often wet up to high altitudes. On very steep smooth slopes this furthers the gliding movement of the entire snowpack. During the day the snowpack softens with varying rapidity depending on wind impact, gradient and aspect, further losing firmness.

Weather

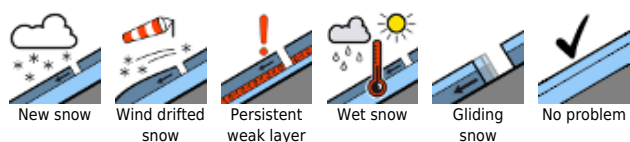
Sunny, cloudless skies will prevail to start with. In the afternoon, harmless convective clouds will gather above summit level. In addition, dust from the Sahara will again fill the atmosphere. At 2000 m: -1 to 5 degrees. Light SW winds at high altitude.

Outlook

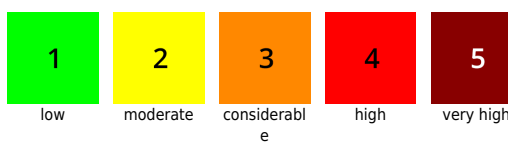
Nocturnal skies will be heavily overcast tonight, and cloud cover will continue on Tuesday. Due to reduced outgoing longwave radiation, danger of wet-snow avalanches will increase already in the morning.

Translated by Jeffrey McCabe, www.creativtrans.com

Avalanche problems



Danger ratings



Expositions

