



## Predominantly favorable conditions, low avalanche danger later rising to moderate



Bregenzerwaldgebirge, Allgäuer Alpen, Lechtaler Alpen, Verwall, Rätikon Ost, Silvretta, Rätikon West, Lechquellengebirge



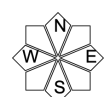
### Avalanche problems

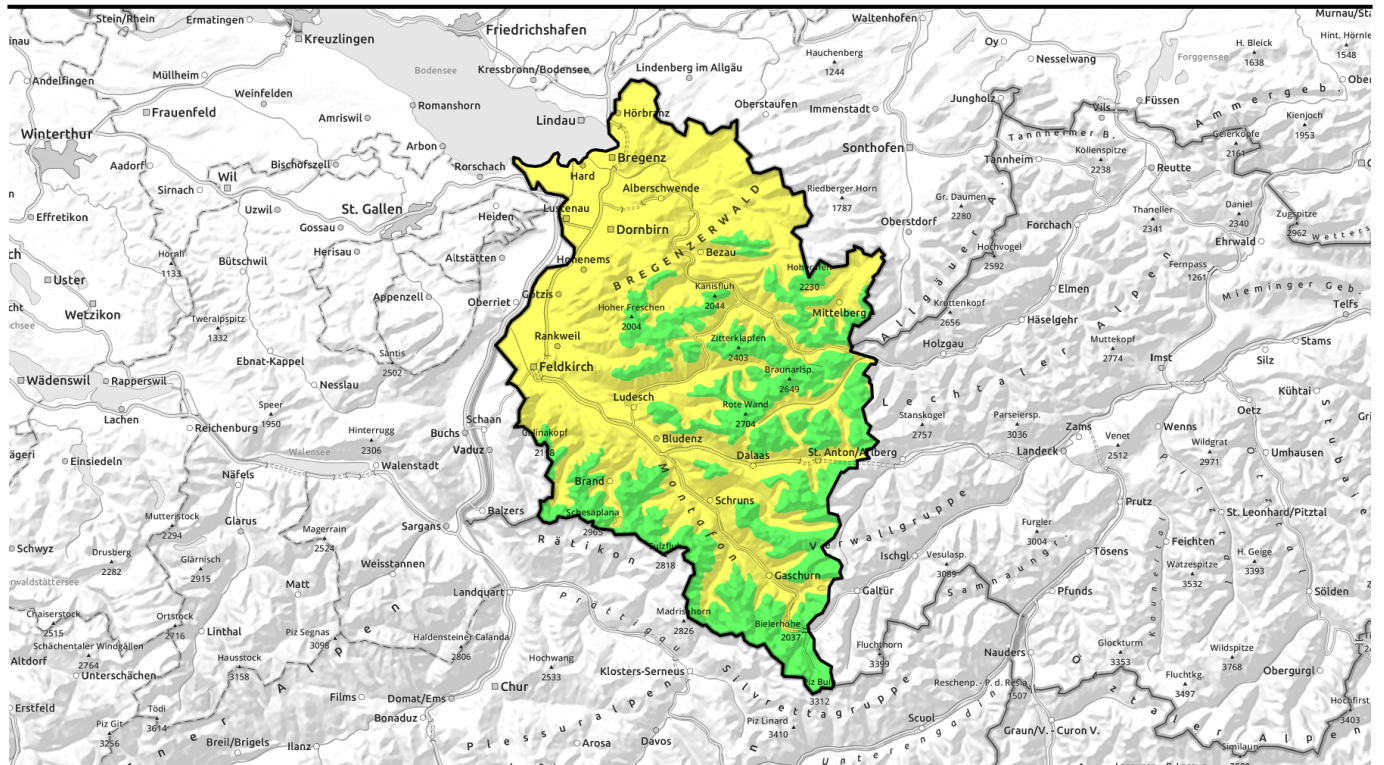


### Danger ratings



### Expositions

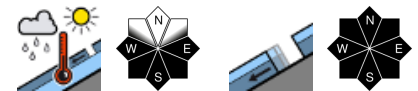




**überwiegend günstige Verhältnisse mit geringer, im Tagesverlauf mäßiger Lawinengefahr**

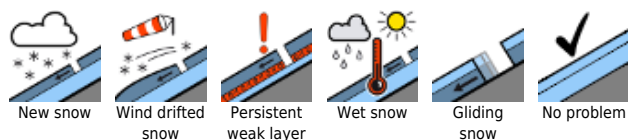


Bregenzerwaldgebirge, Allgäuer Alpen, Lechtaler Alpen, Verwall, Rätikon Ost, Silvretta, Rätikon West, Lechquellengebirge

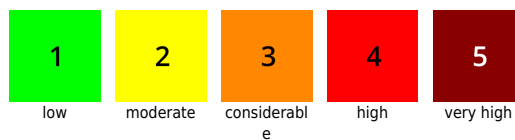


2600 m

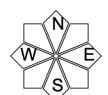
**Avalanche problems**



**Danger ratings**



**Expositions**



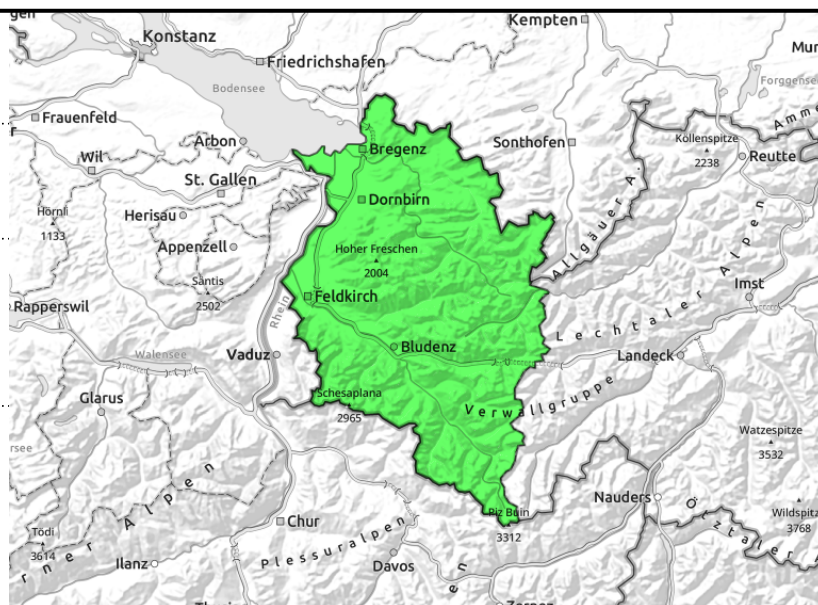
**Bregenzerwaldgebirge, Allgäuer Alpen, Lechtaler Alpen, Verwall, Rätikon Ost, Silvretta, Rätikon West, Lechquellengebirge**



wet-snow avalanches during the day esp. on sun-drenched slopes, due to solar radiation and warmth



Slightly increasing daytime danger



## Slightly increasing daytime danger

In the morning “low” avalanche danger prevails for a time. Isolated danger zones for dry-snow avalanches occur still in extremely steep, mostly shady terrain in high alpine regions. Apart from the risks of being buried in snow, the dangers of being swept along and forced to take a fall also require attentiveness. Due to warmth and solar radiation, the danger of wet-snow and glide-snow avalanches rises to “moderate”. Naturally triggered small to medium-sized wet-snow and glide-snow avalanches are possible during the course of the day, especially on steep sunny slopes below 2600m. Glide-snow avalanches can grow to large size in isolated cases. Zones below glide cracks in the surface should be avoided. Backcountry tours should start early, and be terminated sufficiently early.

### Snowpack structure

Following a night of cloudless skies and adequate outgoing longwave radiation, the snowpack was able to form a melt-freeze crust capable of bearing loads. Below the crust, however, the snowpack is thoroughly wet and even the base is often wet up to high altitudes. On very steep smooth slopes this furthers the gliding movement of the entire snowpack. During the day the snowpack softens with varying rapidity depending on wind impact, gradient and aspect, further losing firmness.

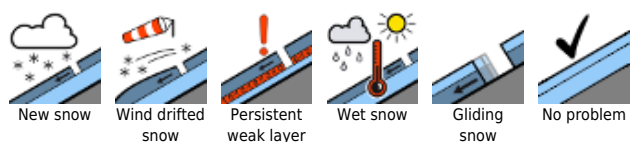
### Weather

Sunny, cloudless skies will again prevail all day long. At midday the zero-degree level will lie at 2700m. At 2000 m: -1 to 7 degrees. Light winds at high altitude.

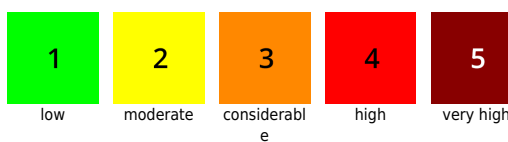
### Outlook

No significant change is expected, favorable conditions will continue. The risks of wet-snow avalanches increase slightly each day with solar radiation and daytime warming.

#### Avalanche problems



#### Danger ratings



#### Expositions

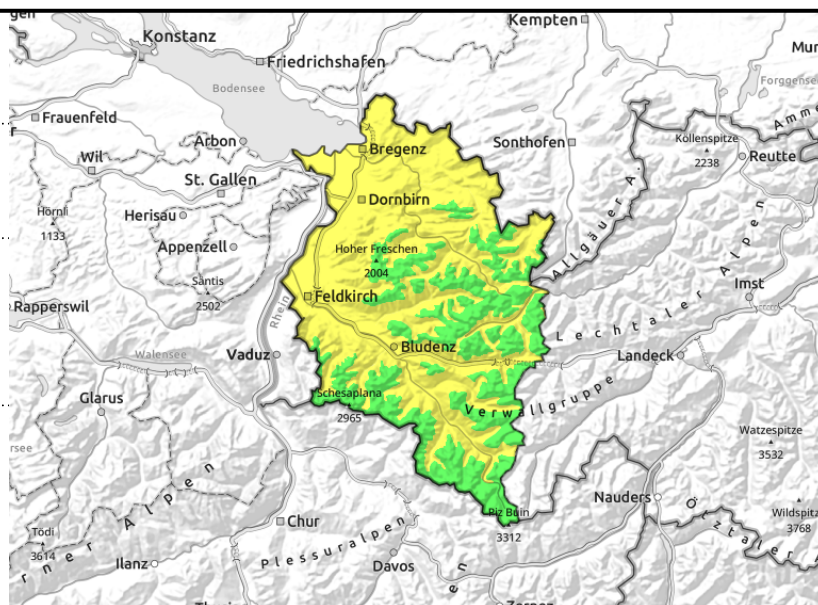


**Bregenzerwaldgebirge, Allgäuer Alpen, Lechtaler Alpen, Verwall, Rätikon Ost, Silvretta, Rätikon West, Lechquellengebirge**



wet-snow avalanches during the day esp. on sun-drenched slopes, due to solar radiation and warmth

Slightly increasing daytime danger



## Slightly increasing daytime danger

In the morning “low” avalanche danger prevails for a time. Isolated danger zones for dry-snow avalanches occur still in extremely steep, mostly shady terrain in high alpine regions. Apart from the risks of being buried in snow, the dangers of being swept along and forced to take a fall also require attentiveness. Due to warmth and solar radiation, the danger of wet-snow and glide-snow avalanches rises to “moderate”. Naturally triggered small to medium-sized wet-snow and glide-snow avalanches are possible during the course of the day, especially on steep sunny slopes below 2600m. Glide-snow avalanches can grow to large size in isolated cases. Zones below glide cracks in the surface should be avoided. Backcountry tours should start early, and be terminated sufficiently early.

### Snowpack structure

Following a night of cloudless skies and adequate outgoing longwave radiation, the snowpack was able to form a melt-freeze crust capable of bearing loads. Below the crust, however, the snowpack is thoroughly wet and even the base is often wet up to high altitudes. On very steep smooth slopes this furthers the gliding movement of the entire snowpack. During the day the snowpack softens with varying rapidity depending on wind impact, gradient and aspect, further losing firmness.

### Weather

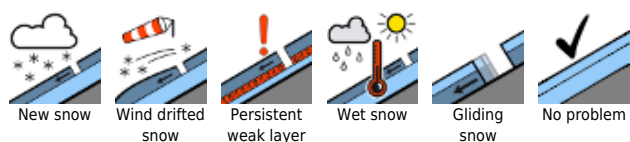
Sunny, cloudless skies will again prevail all day long. At midday the zero-degree level will lie at 2700m. At 2000 m: -1 to 7 degrees. Light winds at high altitude.

### Outlook

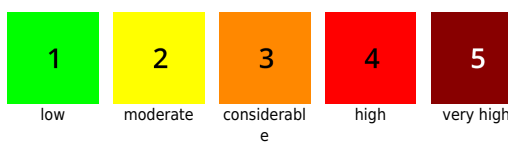
No significant change is expected, favorable conditions will continue. The risks of wet-snow avalanches increase slightly each day with solar radiation and daytime warming.

Translated by Jeffrey McCabe, [www.creativtrans.com](http://www.creativtrans.com)

#### Avalanche problems



#### Danger ratings



#### Expositions

